

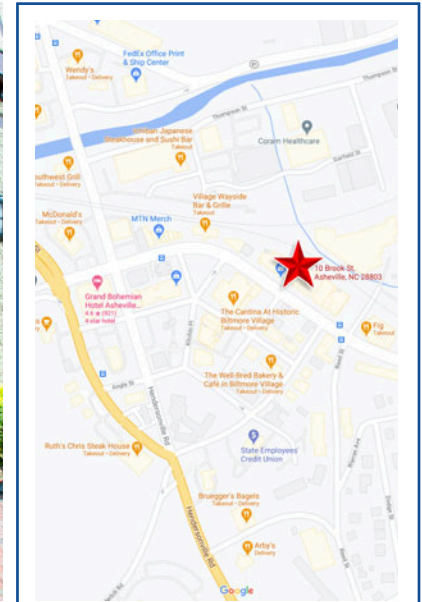
LEASING 5,102/sf SPACE IN BILTMORE VILLAGE
10 Brook Street
Asheville, NC 28803

contact: 828.768.7098 • jwilson@pulliamproperties.com



WESTERN NORTH CAROLINA'S TOP COMMERCIAL REAL ESTATE FIRM

MAP CREDIT: GOOGLE MAPS



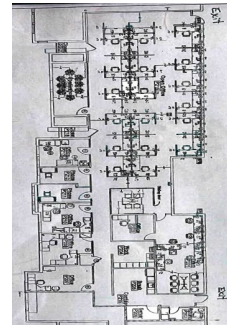
SUITE 217
\$19.50 /sf NNN

- 2,036 SQ FT
- Historic Biltmore Village
- SUBLEASE



SUITE 237
Leased

- 3,284 SQ FT
- 13 Private Offices
- Reception & Kitchen Areas



SUITE 210
\$24.00/sf NNN

- 5,102 SQ FT
- Large Office Space
- 24 Cubicles

Location Highlights

- Biltmore House & Gardens
- Downtown Asheville
- McDonalds
- Ruth's Chris Steak House
- Starbucks
- Ichiban Japanese
- Catawba Brewing Co.
- Moe's Southwest Grill
- Red Stag Grill
- Williams-Sonoma
- MTN Merch
- FedEx
- Bellagio Clothing
- Gate House Gift Shop
- Dwellings Furniture
- Grand Bohemian
- Griffin's Lair

COLOR KEY: ■ ACCOMMODATIONS ■ BUSINESSES ■ FOOD ■ ATTRACTIONS



James Wilson
 Commercial Broker
 Main Office: 828.684.4344
 Mobile: 828.768.7098
 Email: jwilson@pulliamproperties.com

EXPERIENCE MAKES THE DIFFERENCE

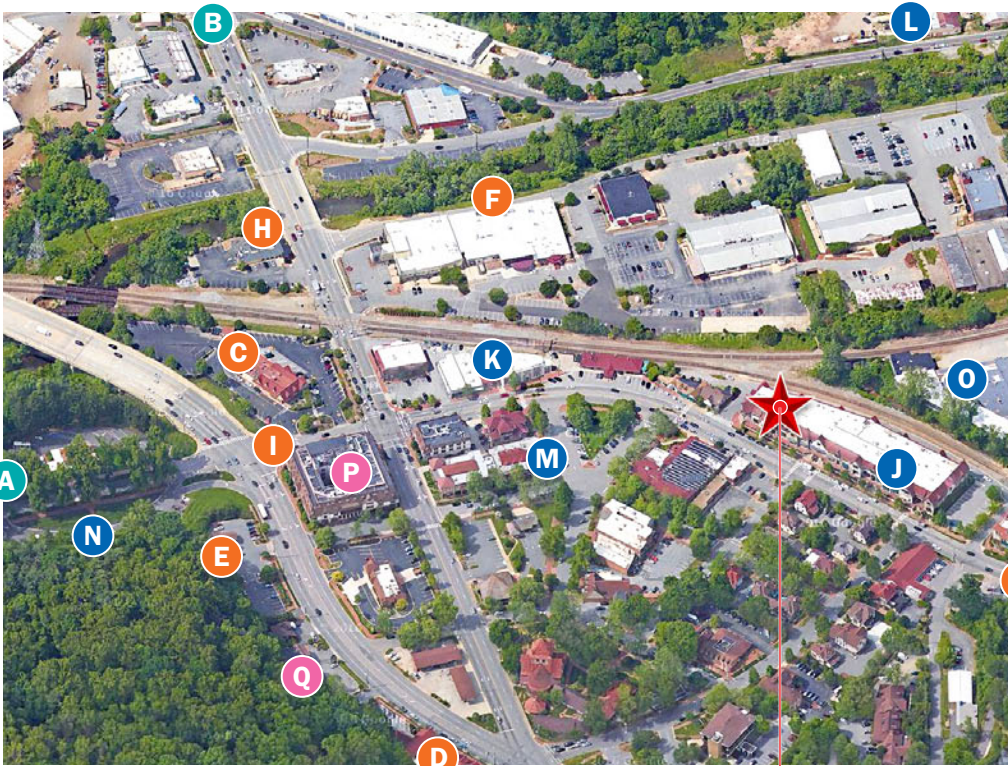
©2021 Pulliam Properties: All information regarding property for sale or lease is from sources deemed reliable, but no warranty or representation is made as to the accuracy thereof and the same is submitted subject to errors, omissions, prior sale or lease, change or withdrawal without notice. No liability of any kind is to be imposed on the broker herein.

LEASING 5.102/SF SPACE IN BILTMORE VILLAGE
10 Brook Street
Asheville, NC 28803

contact: 828.768.7098 • jwilson@pulliamproperties.com

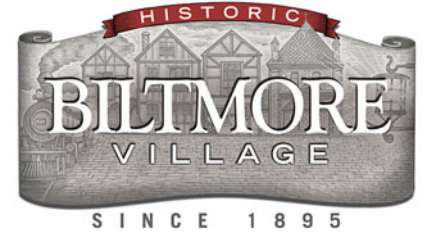


WESTERN NORTH CAROLINA'S TOP COMMERCIAL REAL ESTATE FIRM



MAP CREDIT: GOOGLE MAPS

SITE LOCATION



Location Highlights

- ACCOMMODATIONS
 - A. Biltmore House & Gardens
 - B. Downtown Asheville
- ACCUMODATIONS
 - C. McDonalds
 - D. Ruth's Chris Steak House
- BUSINESSES
 - E. Starbucks
 - F. Ichiban Japanese
 - G. Catawba Brewing Co.
- FOOD
 - H. Moe's Southwest Grill
 - I. Red Stag Grill
- FOOD
 - J. Williams-Sonoma
 - K. MTN Merch
- FOOD
 - L. FedEx
 - M. Bellagio Clothing
 - N. Gate House Gift Shop
 - O. Dwellings Furniture
- ATTRACTIONS
 - P. Grand Bohemian
 - Q. Griffin's Lair



James Wilson
 Commercial Broker
 Main Office:
 828.684.4344
 Mobile:
 828.768.7098
 Email:
jwilson@pulliamproperties.com

EXPERIENCE MAKES THE DIFFERENCE

©2021 Pulliam Properties: All information regarding property for sale or lease is from sources deemed reliable, but no warranty or representation is made as to the accuracy thereof and the same is submitted subject to errors, omissions, prior sale or lease, change or withdrawal without notice. No liability of any kind is to be imposed on the broker herein.



PULLIAMPROPERTIES.COM

LEASING 5,102/SF SPACE IN BILTMORE VILLAGE
10 Brook Street
Asheville, NC 28803

contact: 828.768.7098 • jwilson@pulliamproperties.com



WESTERN NORTH CAROLINA'S TOP COMMERCIAL REAL ESTATE FIRM



AREA TRAFFIC

MAP CREDIT: GOOGLE MAPS

OTHER TENANTS SHARING LOCATION

BUSINESSES AT 10 BROOK STREET

BUSINESS	DESCRIPTION	US LOCATIONS	REACH
Biltmore Property Group	Real Estate	2	Regional
Chico's	Ladies' Apparel	1,080	International
Dogwood Dental	MD/DDS	1	Local
Soma Intimates	Accessory	433	National
Talbots	Ladies' Apparel	971	International
Williams-Sonoma	Home Accessories	359	International



James Wilson
 Commercial Broker

Main Office:
 828.684.4344

Mobile:
 828.768.7098

Email:
jwilson@pulliamproperties.com

EXPERIENCE MAKES THE DIFFERENCE

©2021 Pulliam Properties: All information regarding property for sale or lease is from sources deemed reliable, but no warranty or representation is made as to the accuracy thereof and the same is submitted subject to errors, omissions, prior sale or lease, change or withdrawal without notice. No liability of any kind is to be imposed on the broker herein.



PULLIAMPROPERTIES.COM