



ATM SITE OF 1/2 ACRE OR MORE IN
DESIRABLE MOUNT PLEASANT SC ON HWY 17 AND
HWY 41.

245 Crystal Drive
Mount Pleasant, SC 29466

James A. Dingle | Senior Broker | jdingle@cbcatlantic.com



**COLDWELL BANKER
COMMERCIAL
ATLANTIC**

ATM SITE

PROPERTY OVERVIEW

Subject properties are on the corner of Hwy 17 and Crystal Drive. The two lots are in the sweetgrass overlay district. There is a county drainage easement that runs across the back end of lot 2. Lot 2a is a tandem lot also adjacent to crystal drive. This location is a very high traffic area near Hwy 41 intersection. A small drive thru is highest and best use on the going home evening side.



PRICE

\$725,000



ZONING

Sweetgrass Overlay District



ACRES

1 Acre (2 Parcels)

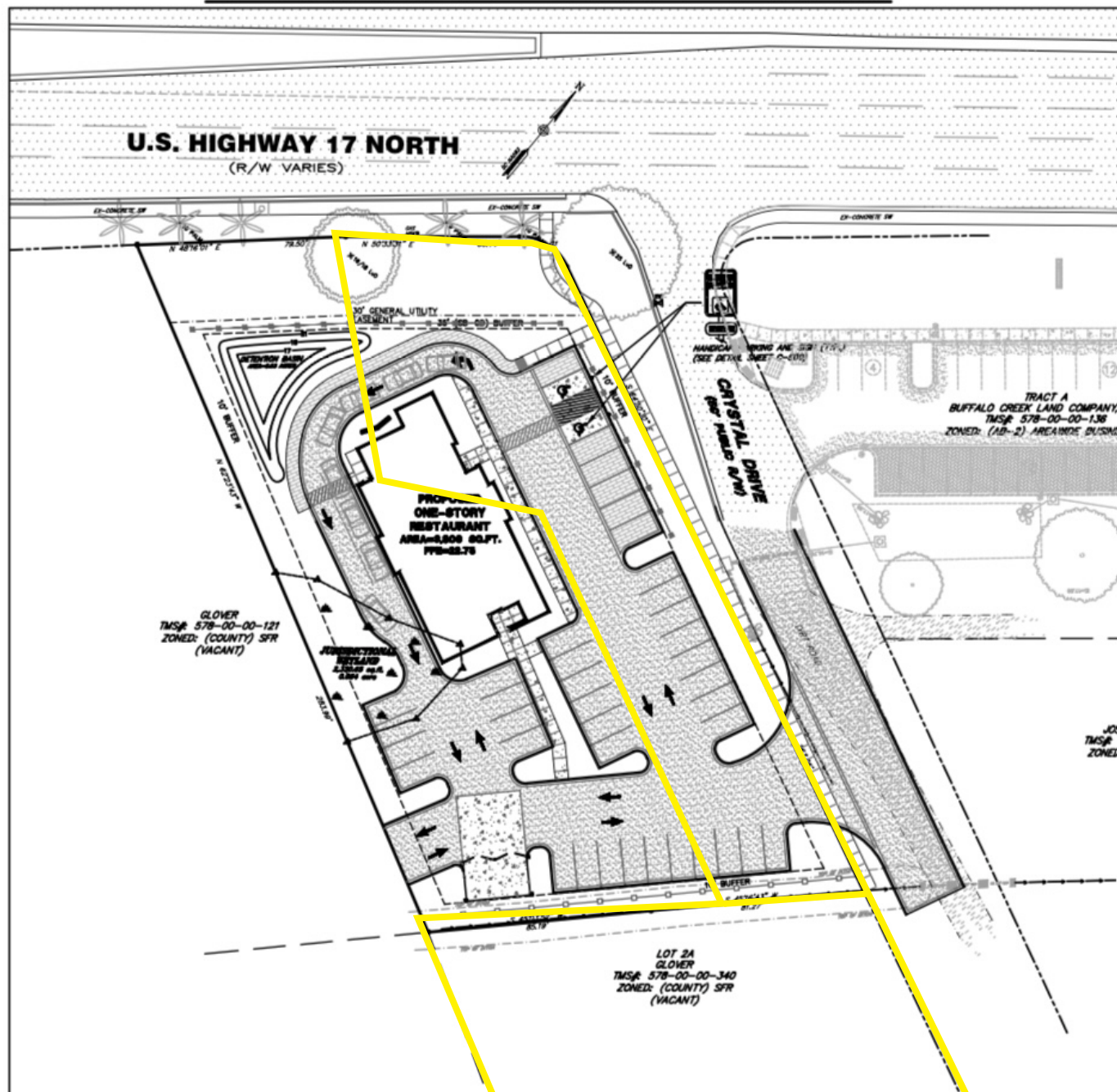


TAX ID

5780000124,125

245 Crystal Drive | Mount Pleasant, SC 29466

OVERALL SITE PLAN



AERIAL

Dunkin'

N Hwy 17

17

Crystal

Yough Hall Rd

245 Crystal Drive | Mount Pleasant, SC 29466

ATM SITE

LOCATION



245 Crystal Drive | Mount Pleasant, SC 29466

Laing Middle School
Image © 2025 Airbus

ATM SITE

CHARLESTON METRO AREA

The Charleston region's population is growing 3X faster than the U.S. average, to more than 849,000. A steady stream of well-educated young talent, who come for jobs – or create their own in our entrepreneurial friendly environment – are helping to boost that number.



POPULATION & DEMOGRAPHICS

849,000

Charleston Region Population

38.5

Median Age

40+

New people move to the region
each day

<https://charlestonregionaldata.com/profile-metro>
<https://www.crda.org/local-data/population-demographics/>

James A. Dingle
Senior Broker
(C) 843.822.4311
jdingle@cbcatlantic.com

Simply Green Landscaping

Dunkin'

17

N Hwy 17

Sonic Drive-In

MEDcare Urgent Care - Mt. Pleasant

Goodwill AME Church

Crystal Dr

Yough Hall Rd



COLDWELL BANKER
COMMERCIAL
ATLANTIC

3506 W Montague Ave Suite 200
North Charleston, SC 29418
843.744.9877
cbcatlantic.com | cbcretailatlantic.com

This information has been obtained from sources believed reliable but has not been verified for accuracy or completeness. Coldwell Banker Commercial Atlantic makes no guarantee, representation or warranty and accepts no responsibility or liability as to the accuracy, completeness, or reliability of the information contained herein. You should conduct a careful, independent investigation of the property and verify all information. Any reliance on this information is solely at your own risk.

The information contained herein should be considered confidential and remains the sole property of Coldwell Banker Commercial Atlantic at all times. Although every effort has been made to ensure accuracy, no liability will be accepted for any errors or omissions. Disclosure of any information contained herein is prohibited except with the express written permission of Coldwell Banker Commercial Atlantic.