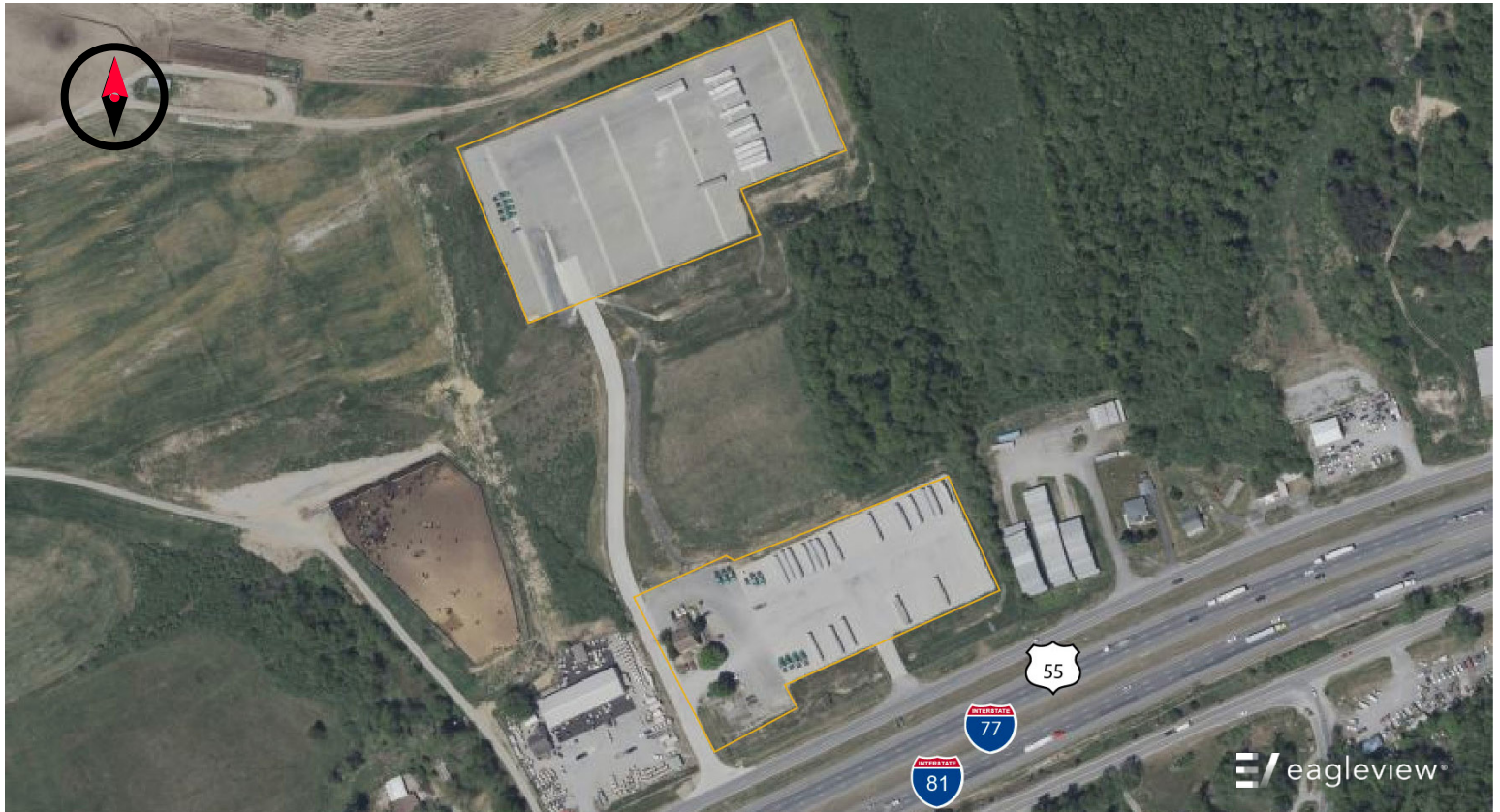


# UP TO 8± ACRE DROP YARD AVAILABLE FOR SALE OR LEASE

1836 E Lee Highway, Wytheville, VA



## 20.8± TOTAL ACRES WITH 2 DROP YARDS AVAILABLE

### PROPERTY DETAILS

#### NORTHERN YARD:

- 5± acres
- Per acre leases considered
- Gravel yard with concrete dolly strips
- Fenced & lit

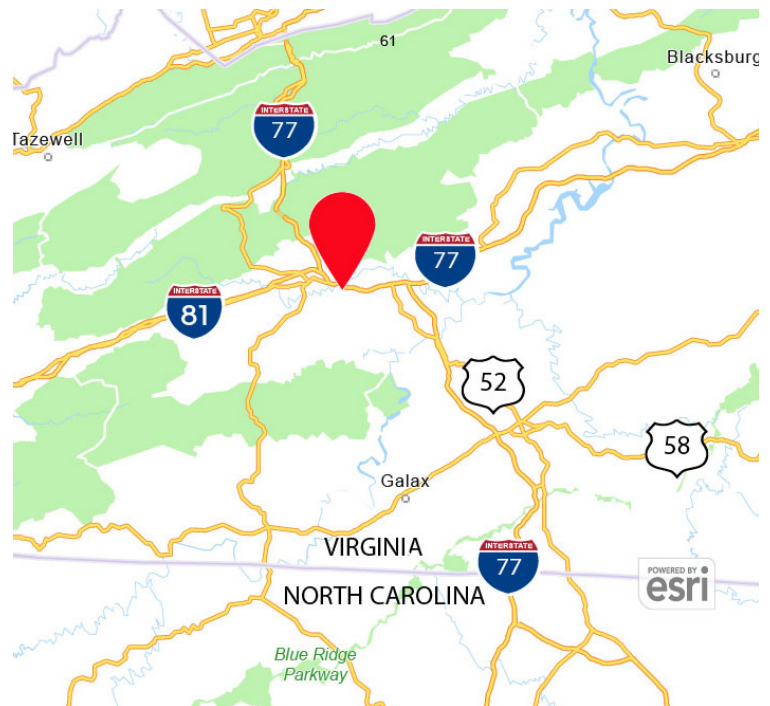
#### SOUTHERN YARD:

- 3± acres
- 2,860± SF office
- Employee parking area
- Concrete paved
- Fenced & lit



### LOCATION HIGHLIGHTS

This property near the border of VA & NC is located on I-77/I-81 S between exits 77 and 80, with direct access to both via Lee Hwy (US 11).



**Burr & Temkin**

Transportation Real Estate Specialists Since 1983



Eric McFarlin  
Principal  
336.817.2969  
[ericm@burrtemkin.com](mailto:ericm@burrtemkin.com)

Parker Dotson  
Broker  
336.682.2560  
[parker@burrtemkin.com](mailto:parker@burrtemkin.com)

# UP TO 8± ACRE DROP YARD AVAILABLE FOR SALE OR LEASE

1836 E Lee Highway, Wytheville, VA



**Burr & Temkin**  
Transportation Real Estate Specialists Since 1983



Eric McFarlin  
Principal  
336.817.2969  
[ericm@burrtemkin.com](mailto:ericm@burrtemkin.com)

Parker Dotson  
Broker  
336.682.2560  
[parker@burrtemkin.com](mailto:parker@burrtemkin.com)

# Burr & Temkin

Transportation Real Estate Specialists Since 1983

935 E. Mountain Street  
Suite O  
Kernersville, NC 27284



Eric McFarlin  
Principal  
336.996.2550  
[ericm@burrttemkin.com](mailto:ericm@burrttemkin.com)



Parker Dotson  
Broker  
336.682.2560  
[parker@burrttemkin.com](mailto:parker@burrttemkin.com)