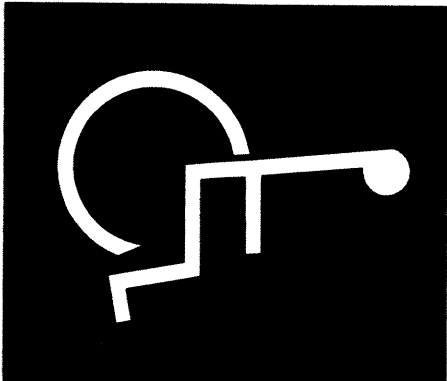


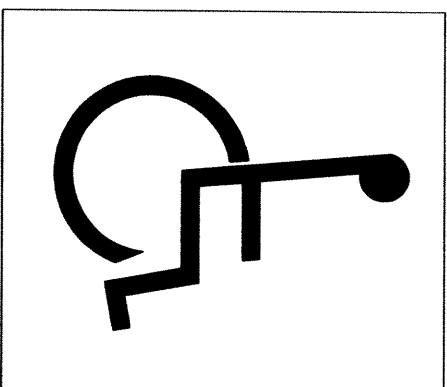
FLAME SPREAD AND SMOKE DEVELOPED INDEXES

INSULATING MATERIALS INSTALLED IN BUILDINGS OF ANY TYPE SHALL HAVE A FLAME SPREAD INDEX OF NOT MORE THAN 25 AND A SMOKE-DEVELOPED INDEX OF NOT MORE THAN 450 AS DETERMINED IN ACCORDANCE WITH ASTM 84. CLEARLY SPECIFY ON DRAWINGS THE CORRESPONDING FLAME SPREAD AND SMOKE-DEVELOPED INDEXES FOR THE PROPOSED INSULATION TO DOCUMENT COMPLIANCE WITH SBC SECTIONS 718.1, 718.2, AND 718.3 [EXCEPTION] :

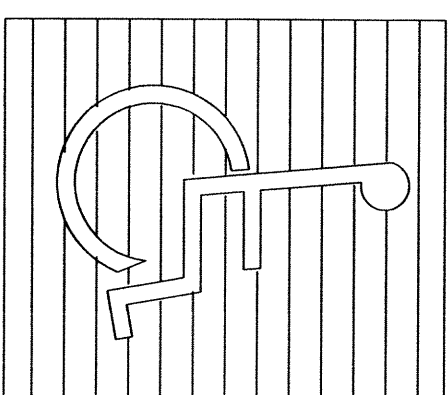
FLAME SPREAD AND SMOKE DEVELOPED INDEXES DO NOT APPLY TO FACINGS, COVERINGS, AND LAYERS OF REFLECTIVE FOL. INSULATION INSTALLED IN CONCEALED SPACES AND IN DIRECT CONTACT WITH THE UNEXPOSED SURFACE OF THE CEILING, WALL, OR FLOOR FINISH FOR BUILDINGS OF TYPES III, IV, OR V [CONSTRUCTION.]



TYPICAL



DISPLAY CONDITIONS INTERNATIONAL SYMBOL OF ACCESSIBILITY



MOUNT 60" OFF OF FLOOR
TO THE CENTER LINE OF
THE SIGN AND A MIN. OF
3" TO THE LEVER SIDE OF
THE DOOR JAMB.

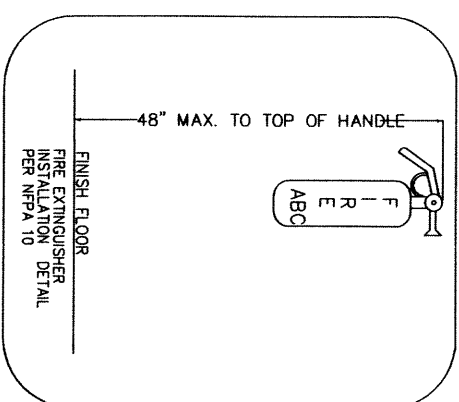
CHARACTER HEIGHTS

RAISED AND BRAILLE CHARACTERS AND PICTORIAL SYMBOLS SIGNS. LETTERS AND NUMERALS SHALL BE RAISED 1/32 INCH, UPPERCASE, SANS, SERIF OR SIMPLE SERIF TYPE

2 BRAILLE

DIRECTLY BELOW THE PICTOGRAM

SHALL BE 6 INCHES MINIMUM IN HEIGHT.



DOOR SCHEDULE

MARK SIZE	MATERIAL	LINEAL
① 3' x 7'	METAL FRAME & GLASS DOOR	3-1/2" x 3-1/2" x 3/8" @ 60°
② 3' x 7'	HOLLOW METAL DOOR	3-1/2" x 3-1/2" x 3/8" @ 60°
③ 12' x 14'	HYPER FIBER METAL DOOR	3-1/2" x 3-1/2" x 3/8" @ 168°
④ 12' x 12'	HYPER FIBER METAL DOOR	3-1/2" x 3-1/2" x 3/8" @ 168°
⑤ 8' x 10'	HYPER FIBER METAL DOOR	3-1/2" x 3-1/2" x 3/8" @ 104°
⑥ 14' x 16'	HOLLOW METAL DOOR	3-1/2" x 3-1/2" x 3/8" @ 216°

WINDOW SCHEDULE

MARK SIZE	MATERIAL	LINTEL
Ⓐ 5' x 6'	METAL FRAME & FIXED GLASS	3-1/2" x 3-1/2" x 3/8" @ 68"
Ⓑ 5' x 10'	METAL FRAME & FIXED GLASS	3-1/2" x 3-1/2" x 3/8" @ 132"

DOORS SHALL MEET THE REQUIREMENTS OF NFPA 101 LIFE SAFETY CODE, ADAPTED 7, SEC. 7.9.4, 2000 EDITION.

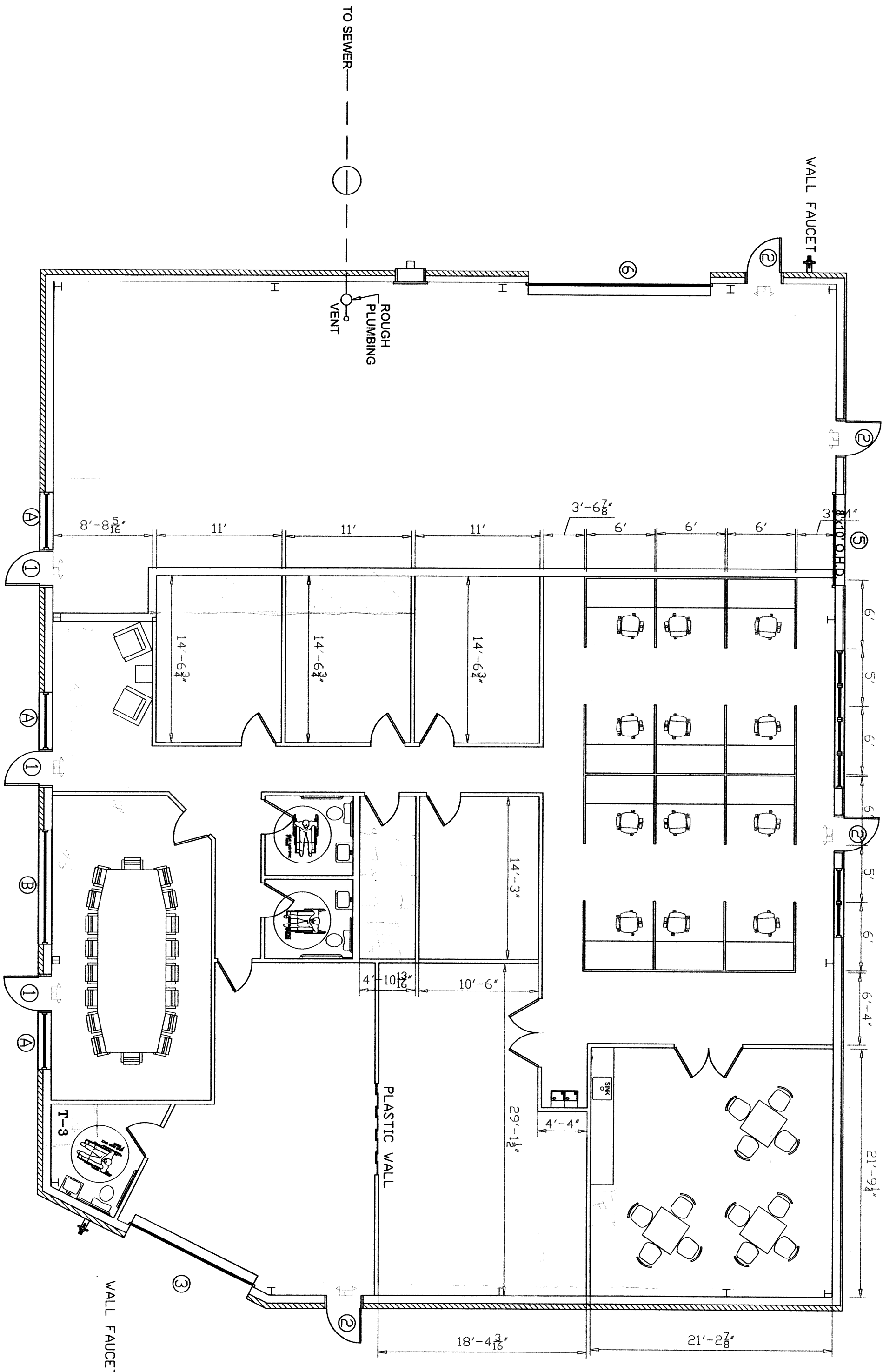
DOORS SHALL HAVE A SELF CLOSING DEVICE AND SHALL MEET THE REQUIREMENTS OF THE NFPA 101 LIFE SAFETY CODE, CHAPTER7, SEC. 7.2.1.4, 2000 EDITION.

ALL EXTERIOR

ALL EXTERIOR DOORS SHALL OPEN ONTO A GRADE LEVEL STOOP (LEVEL MEANS OF EGRESS).


KNOWLEDGE TO OPERATE PER NFPA 101 LIFE SAFETY CODE 2001 EDITION
CHAPTER 5-2.1.5.1.

CORRESPONDING HOURLY RATING) IDENTIFY ALL FIRE RATED WALLS (AND CONTRACTOR SHALL PERMANENTLY IDENTIFY AT FIRE RATED WALLS (AND CORRESPONDING HOURLY RATING) REQUIRED TO HAVE PROTECTED OPENINGS CORRIDORS PARTITIONS, SMOKE STOP PARTITIONS HORIZONTAL EXIT PARTITIONS AND EXIT ENCLOSURES EITHER BY INSTALLING SIGNS OR BY STENCILING IN CONCEALED SPACES THE FOLLOWING: (ONE HOUR FIRE AND SMOKE BARRIER - PROTECT ALL OPENINGS. IDENTIFICATION SHALL BE SPACED NO MORE THAN TWELVE (12) FEET ON VENTER WITH A MINIMUM LETTER SIZE OF TWO (2) INCHES HEIGHT ON A CONTRASTING BACKGROUND).



FLOOR PLAN

$$1 \diagup \bigcirc \! \! \bigcirc = 1 \diagdown$$

SHEET NUMBER	SHEET TITLE	BUILDING CRITERIA	NO.	REVISIONS	DATE	PROJECT	These construction documents and permitted reproductions, in whole or in part, are instruments of service and are the sole property of Metal Building Associates. They shall not be reproduced or conveyed in any manner nor are they to be used for any project other than that specifically indicated herein without written permission from and due compensation to Metal Building Associates.	BUILDER/DESIGN FIRM	
A-1	BUILDING FLOOR PLAN	ONE STORY BUILDING; 24'-0" HIGH OCCUPANCY CLASSIFICATION: OFFICE TOTAL AREA: 6,300 SQ. FT. OFFICE: 1,868 SQ. FT. WAREHOUSE: 4,432 SQ. FT. IBC CLASSIFICATION: BUSINESS IBC GROUP: B TYPE OF CONSTRUCTION: IBC TYPE VB NON-SPRINKLERED BUILDING OCCUPANCY CATEGORY SEISMIC IMPORTANCE FACTOR: 1				EFRAIN MORALES OUTLOT 7 & 8 4325 CREEK PARK DRIVE SUGARHILL, GA			Metal Building Associates 4335 Woodward Way Sugar Hill, Georgia 30518 Phone: 770-945-2883 Fax: 770-614-9081 Contact: Greg Thigpen
DATE									
PROJECT NUMBER									
CAD FILE									
RELEASE DATE	FOR CONSTRUCTION								