



4046 WETHERBURN WAY

PEACHTREE CORNERS, GA 30092

GWINNETT COUNTY

SPACE AVAILABLE

2,160 SF -
2,856 SF

LEASE RATE

\$16.50/SF

MODIFIED GROSS

CAM \$3.80/SF

RG-RE.COM



PROPERTY DETAILS

Locally Owned and Operated

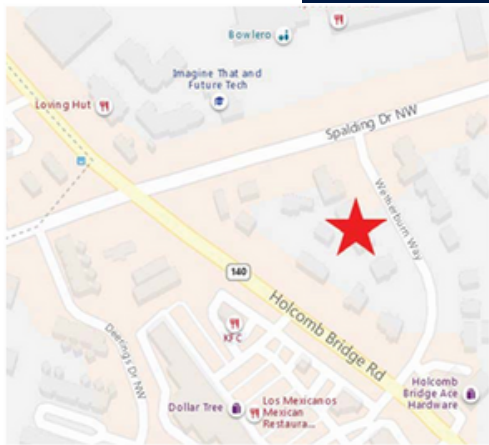
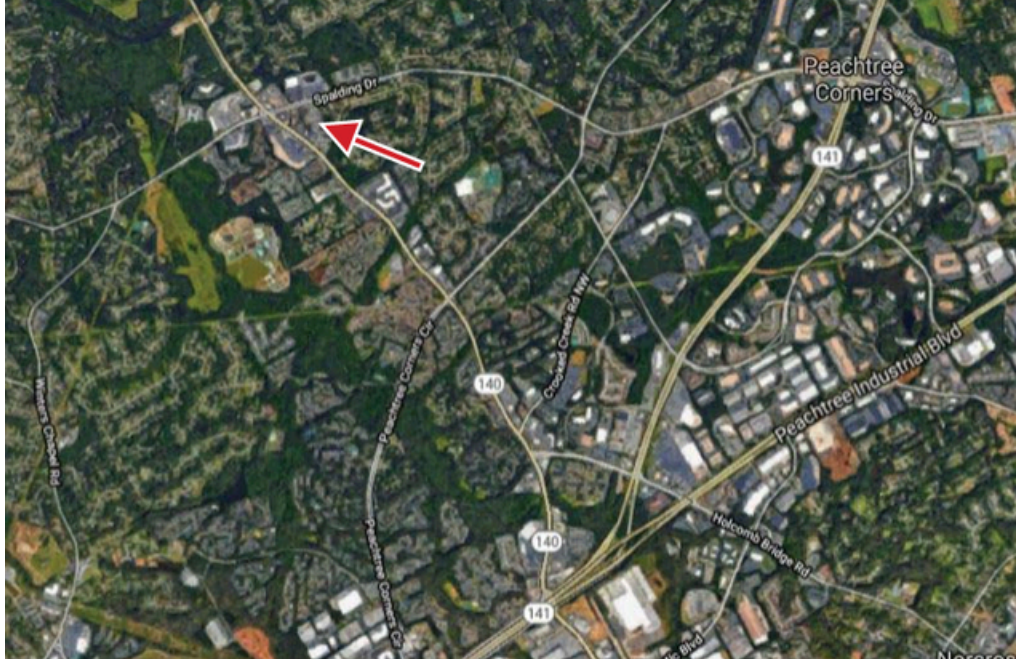
Modified Gross Rate Includes Janitorial Services
and Water/Sewer

Monument Signage Available

FLEXIBLE LEASE TERMS AVAILABLE

SPALDING SQUARE

4046 Wetherburn Way, Peachtree Corners, GA 30092



LOCATION

Excellent Location - Located One Block From
Holcomb Bridge Road and Spalding Drive

Only Minutes to GA-400 and Peachtree Industrial

FOR MORE INFORMATION, PLEASE CONTACT:

LENNY RINDSBERG

LRINDSBERG@RG-RE.COM

770.330.2840

1835 Savoy Drive, Suite 105, Atlanta, GA 30341 | Work 770.393.2006 | www.RG-RE.com

Information contained herein has been obtained from sources we deem reliable. We have no reason to doubt its accuracy, but we do not guarantee it.

RGRE
RG REAL ESTATE