

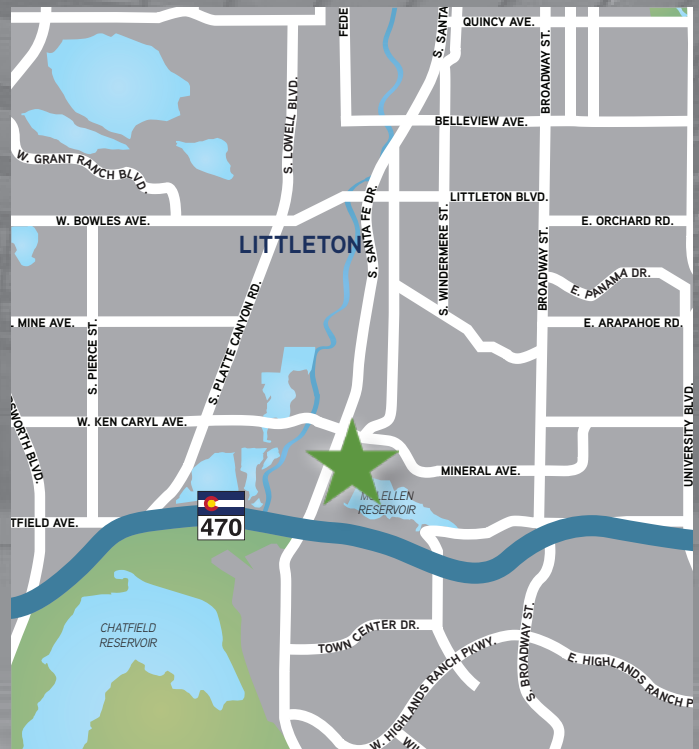


8020 Southpark Circle, Unit 400-500 Littleton, CO 80120

Highpoint Business Center is one of Denver’s premier industrial parks featuring a prime southwest location. There is easy access to South Santa Fe Drive and E-470 via County Line Road. Located in heart of Hilltop Business Park with mountain views.

Highlights

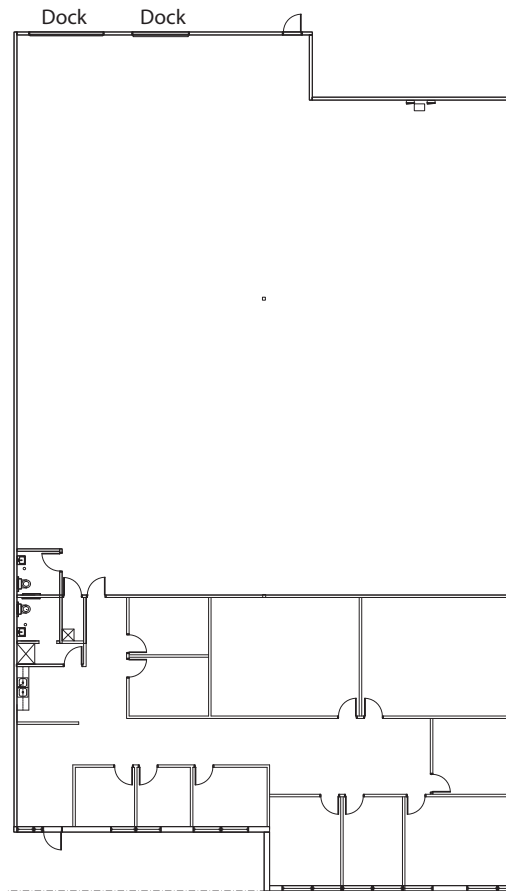
Available:	Immediately
Available SF:	11,337
Office SF:	3,451
Warehouse SF:	7,886
Base Rent:	\$14.50/SF NNN
2024 OPEX:	\$7.15/SF
Monthly Rent:	\$20,450
Number of Docks:	Two (2)
Drive-In:	None
Clear Height:	16’0”
Sprinkler:	Yes
Power:	1,200 amps of 277/480 V



Highpoint Business Center

8020 Southpark Circle, Unit 400-500 | Littleton, CO 80120

Space Plan



Broker Contact

T.J. Smith, SIOR
(303) 283-4576
tj.smith@colliers.com

Cody Sheesley
(303)309-3520
cody.sheesley@colliers.com



[colliers.com/denver](https://www.colliers.com/denver)

Owner Contact

John Strabel
Senior Regional Director
8200 Park Meadows Drive
Unit 8226
Lone Tree, CO 80124
Direct: (248) 894-3974
jstrabel@firstindustrial.com



www.firstindustrial.com

This communication has been prepared by Colliers Denver for advertising and/or general information only. Colliers Denver makes no guarantees, representations or warranties of any kind, expressed or implied, regarding the information including, but not limited to, warranties of content, accuracy and reliability. Any interested party should undertake their own inquiries as to the accuracy of the information. Colliers Denver excludes unequivocally all inferred or implied terms, conditions and warranties arising out of this document and excludes all liability for loss and damages arising there from. This publication is the copyrighted property of Colliers Denver and/or its licensor(s). © 2024. All rights reserved. This communication is not intended to cause or induce breach of an existing listing agreement.