

Small Attractive Office Spaces

For Lease on Old Minden Road, Bossier City

- Great Visibility
- Generous Parking
- Signage Available
- New Businesses in Area
- 18,000+ VPD
- 0.2 mi to I-20
- 0.5 mi to Airline Dr.
- 1.9 mi to BAFB



EXECUTIVE PLACE - 2103 Old Minden Rd.
Suite B - 1,194 Square Feet
Zoned B-3

CENTROPLEX - 2223 Old Minden Rd.
Suite A1 - 625 Square Feet
Zoned B-3

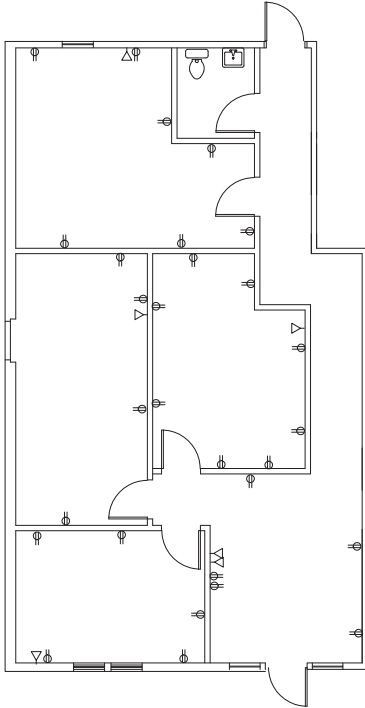


METROPLACE - 2400 Old Minden Rd.
Suite E4 - 500 Square Feet
Zoned for office / service businesses only

For Lease on Old Minden Road

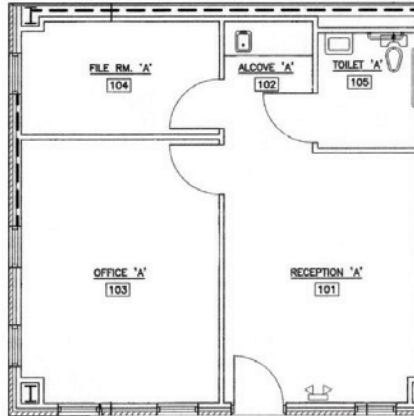
1

EXECUTIVE PLACE
2103 Old Minden Rd.
Suite B - 1,194 Square Feet



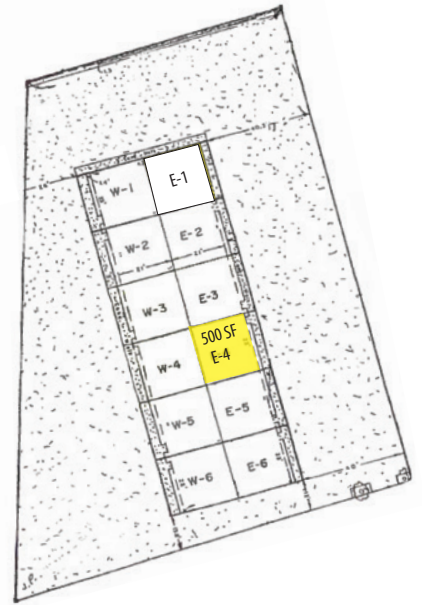
2

CENTROPLEX
2223 Old Minden Rd.
Suite A1 - 625 Square Feet



3

METROPLACE
2400 Old Minden Rd.
Suite E4 - 500 Square Feet



All Information Contained Herein Is Believed To Be Accurate, But Is Not Warranted And No Liability Of Errors Or Omissions Is Assured By Either The Property Owner Or Vintage Realty Company Or Its Agents And Employees. Prices As Stated Herein And Product Availability Is Subject To Change And/Or Sale Or Lease Without Prior Notice, And All Sizes And Dimensions Are Subject To Correction. Rev 1/2026

