

For Lease

Industrial Flex Space/Warehouse



1823 Ohio Street, Suite 102 | Des Moines, IA 50314

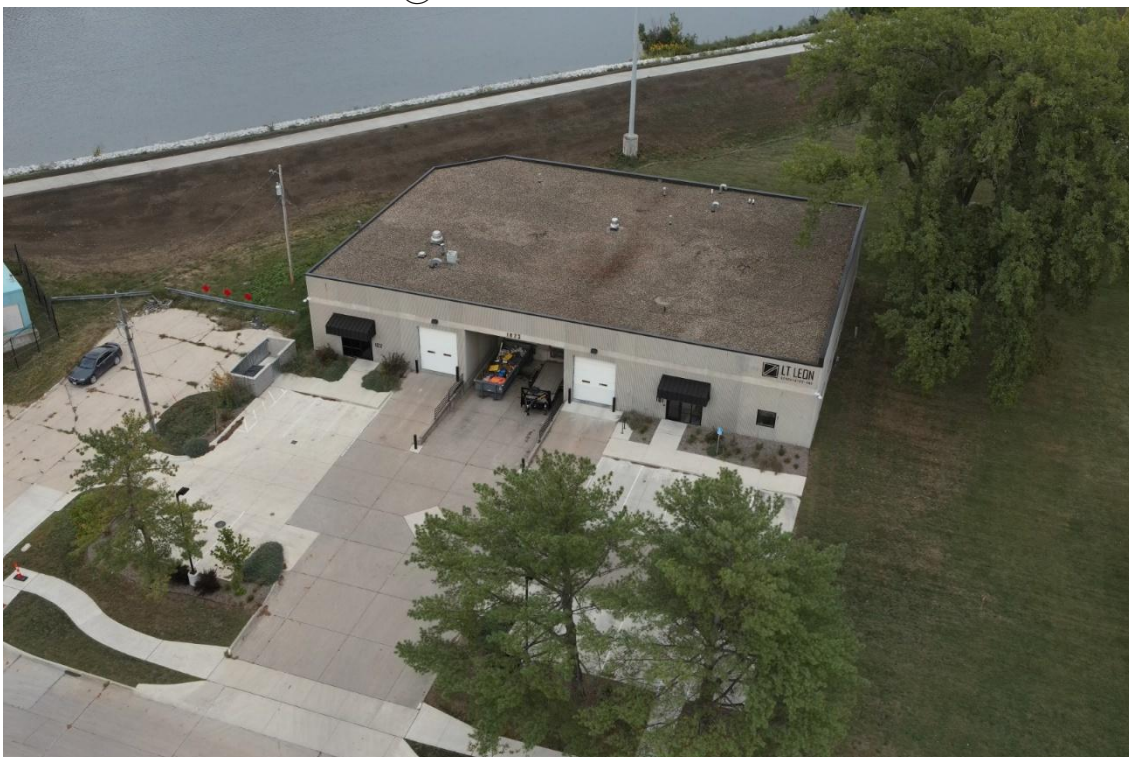
Property details

Available Space: +/- 4,270 SF
Lease Rate: \$10.00 SF/NNN
Location: Located next to the Des Moines River and river walk in Central Place District, minutes from Downtown Des Moines and the East Village.

Property Information:

Overhead Doors:	1 - 12'x16' roll up door 1 - 10'x12' roll up door (dock height)
Clear Height:	16'-8"
Zone:	I-1 - Industrial District, Principal Permitted Use - Light Industrial
Parking on-site Warehouse pallet racking available	

Contact: **LT Leon Associates, Inc.**
Jordan Thompson
Phone: 515-422-7016
Email: info@ltleon.com



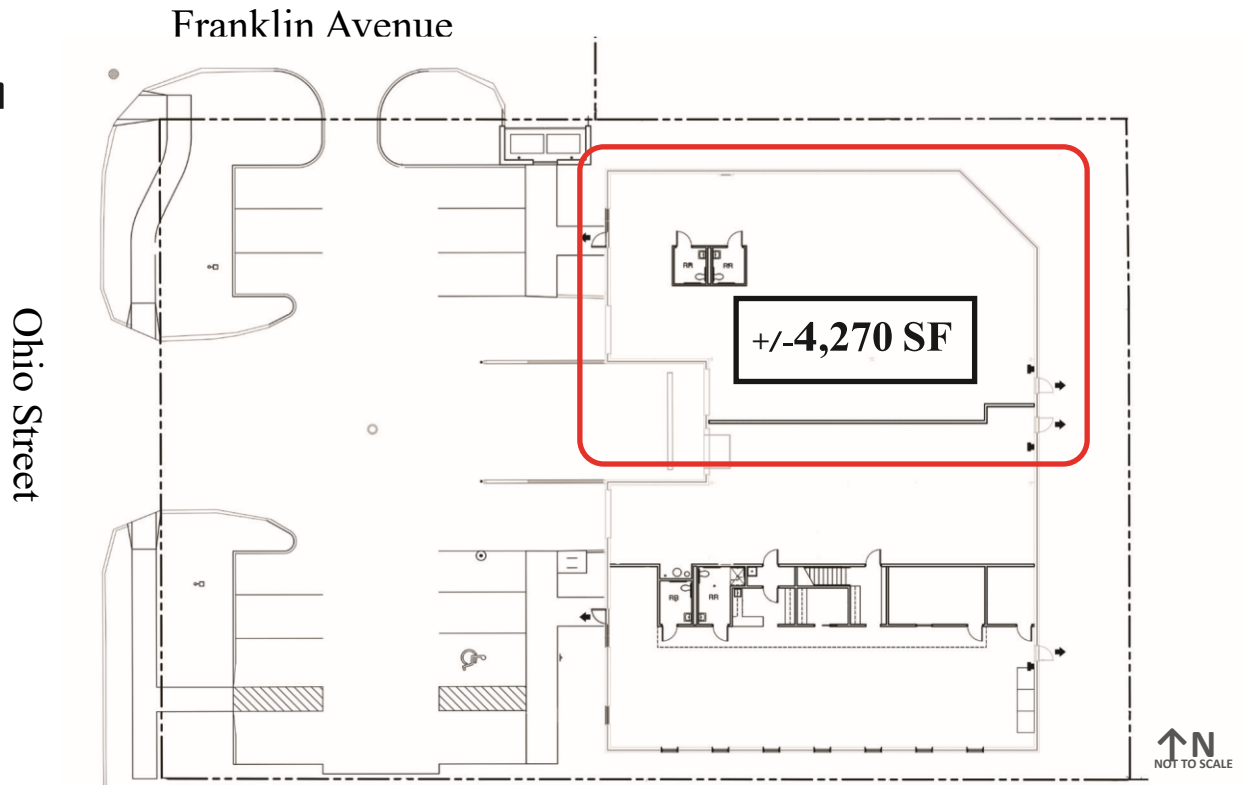
For Lease

Industrial Flex Space/Warehouse



1823 Ohio Street, Suite 102 | Des Moines, IA 50314

Floor plan



Property details

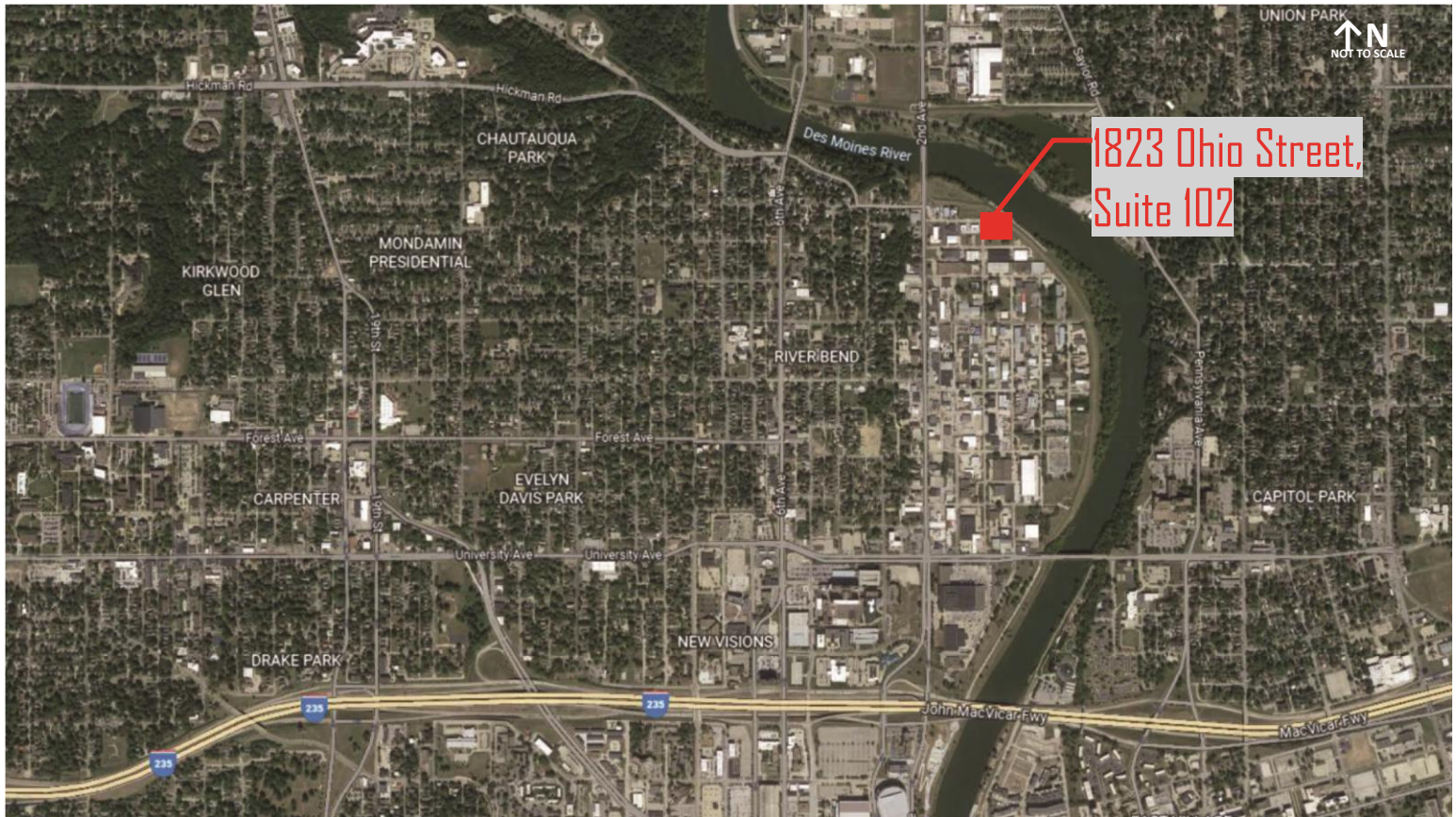
Available Space:	+/- 4,270 SF	
Lease Rate:	\$11.00 SF/NNN	
Location:	Located next to the Des Moines River and future planned river walk in Central Place District, minutes from Downtown Des Moines and the East Village.	
Property Information:	Overhead Doors:	1 - 12'x16' roll up door 1 - 10'x12' roll up door (dock height)
	Clear Height:	16'-8"
	Zone:	I-1 - Industrial District, Principal Permitted Use - Light Industrial
	Parking on-site	
	Warehouse pallet racking available	
Contact:	LT Leon Associates, Inc. Jordan Thompson Phone: 515-422-7016 Email: info@ltleon.com	

For Lease

Industrial Flex Space/Warehouse



1823 Ohio Street, Suite 102 | Des Moines, IA 50314



Contact:

LT Leon Associates, Inc.
Jordan Thompson
Phone: 515-422-7016
Email: info@ltleon.com