

1720 Southwest 42nd Street

Topeka, Kansas, 66609

For Sale



Excellent Owner/User Opportunity

- +/-15,100 SF on +/-1.51 Acres
- Strategically Located between I-470 and I-335 With Convenient Access to I-70
- Two Drive-in Loading Doors
- +/-50 Striped Parking Spaces With Room to Expand
- Call For Pricing

For more information:

Christian Wead
816.412.8472
cwead@blockllc.com

The information contained in this marketing flyer is presented as general information only. Block Real Estate Services, LLC makes no representation as to its accuracy. This information is not intended as legal, financial or real estate advice and must not be relied upon as such. You should make your own inquiries, obtain independent inspections, and seek professional advice tailored to your specific circumstances before making any legal, financial or real estate decisions.

1720 Southwest 42nd Street

Topeka, Kansas, 66609

For Sale

Building Specifications

Building Size:	+/-15,100 SF
Lot Size:	+/- 1.51 AC
Year Built:	1982
Tenancy:	Single or Multi
Zoning:	I1, Light Industrial
Loading:	Two Drive-in Loading Doors
Clear Height:	14'
Parking:	+/-50 Striped Spaces With Room to Expand
Taxes (2024):	\$24,936 (\$1.65 PSF)

For more information:

Christian Wead
816.412.8472
cwead@blockllc.com

1720 Southwest 42nd Street

Topeka, Kansas, 66609

For Sale

Exterior Photos



1720 Southwest 42nd Street

Topeka, Kansas, 66609

For Sale

Interior Photos

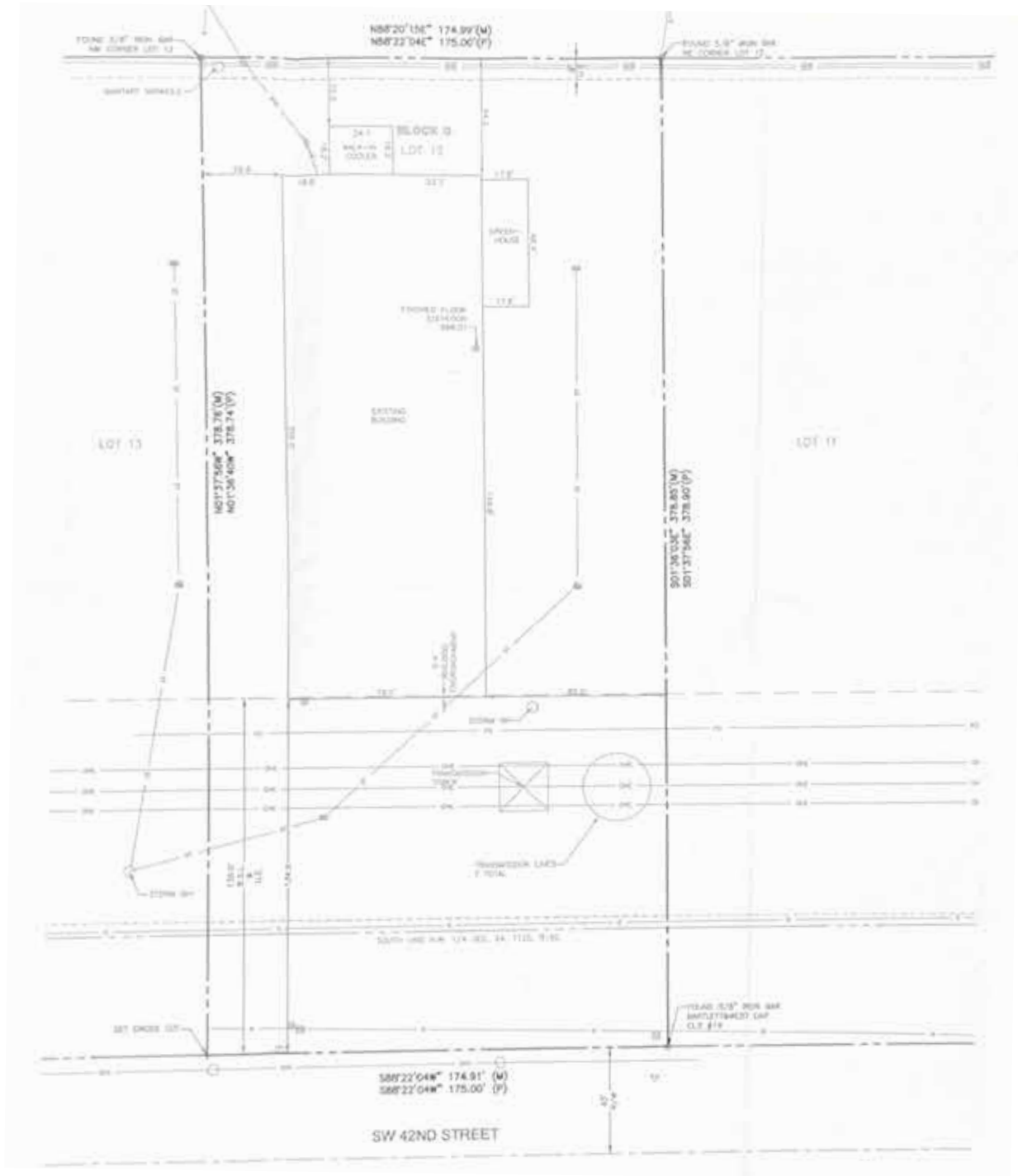


1720 Southwest 42nd Street

Topeka, Kansas, 66609

For Sale

Boundary Survey

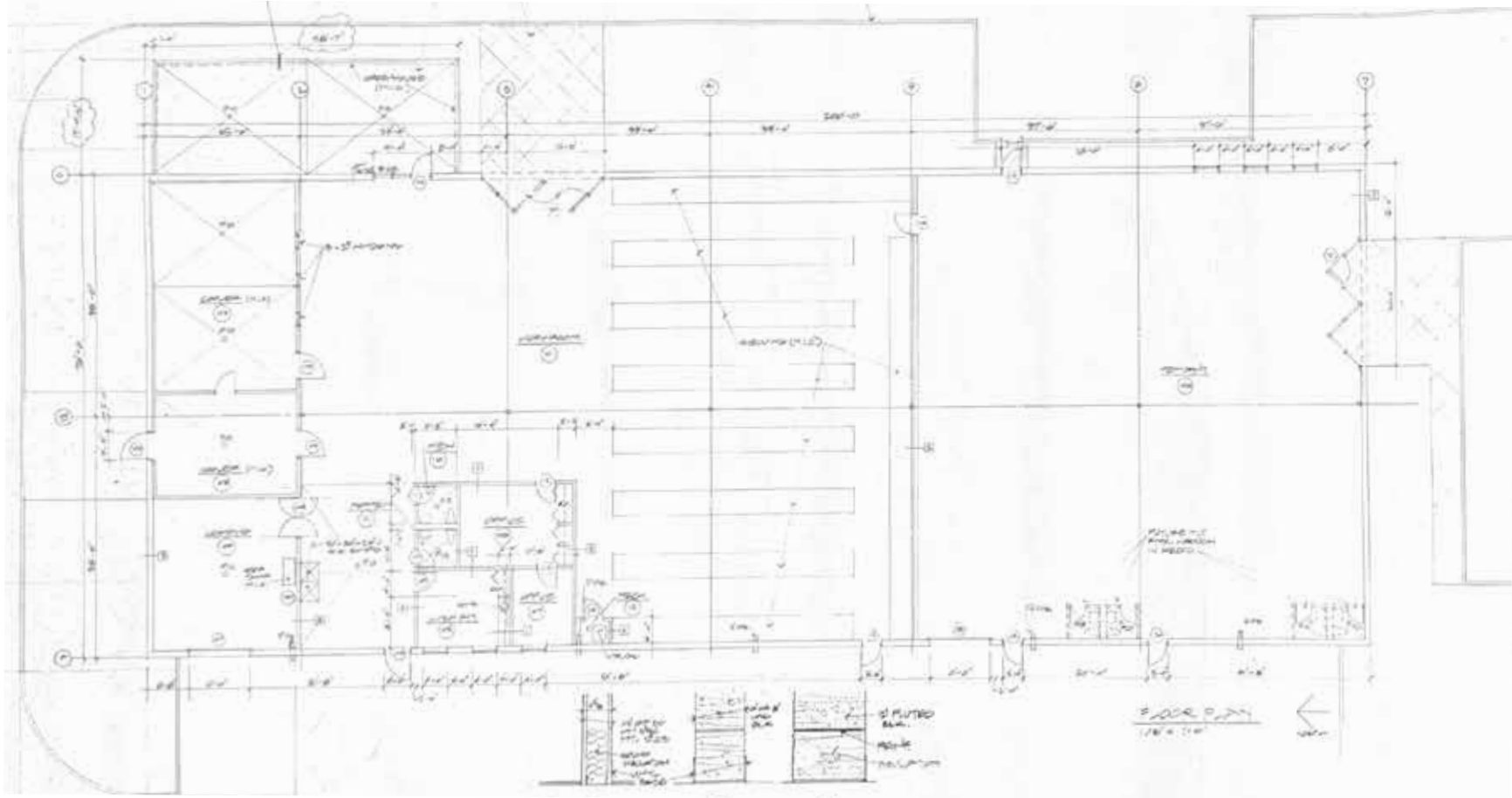


1720 Southwest 42nd Street

Topeka, Kansas, 66609

For Sale

Floor Plan



4622 Pennsylvania Ave., Suite 700
Kansas City, MO 64112
816.756.1400 | www.BLOCKLLC.com

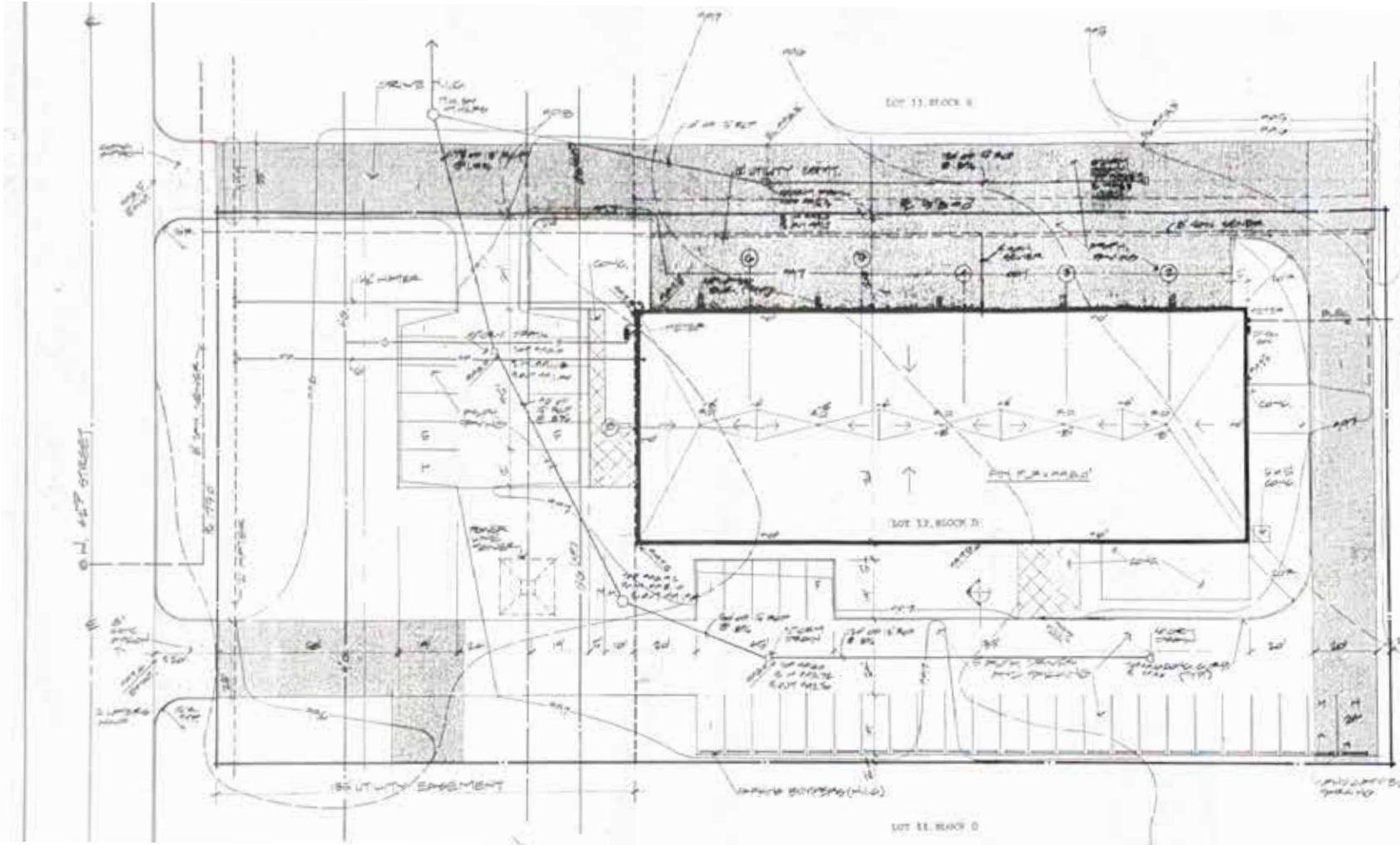
BLOCK
REAL ESTATE SERVICES, LLC

1720 Southwest 42nd Street

Topeka, Kansas, 66609

For Sale

Site Plan



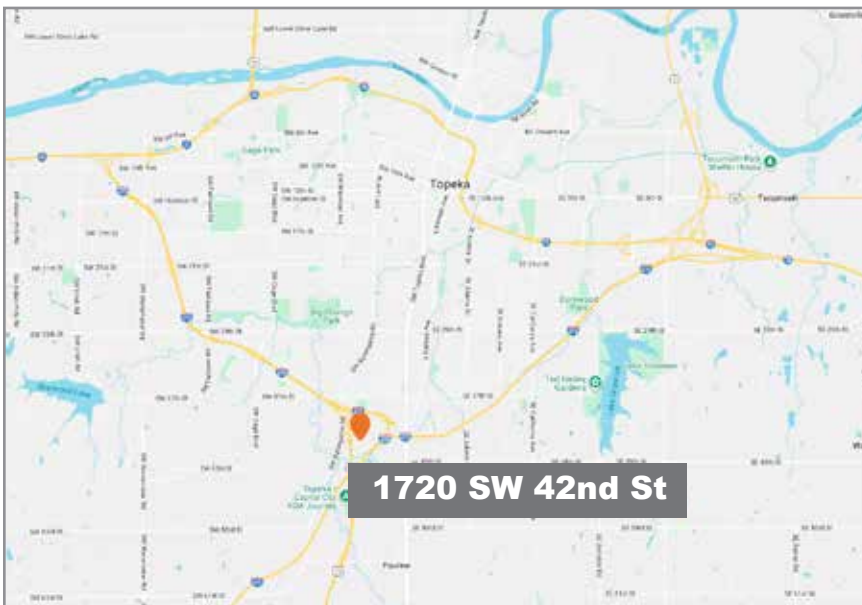
4622 Pennsylvania Ave., Suite 700
Kansas City, MO 64112
816.756.1400 | www.BLOCKLLC.com

BLOCK
REAL ESTATE SERVICES, LLC

1720 Southwest 42nd Street

Topeka, Kansas, 66609

For Sale



For more information:

Christian Wead

816.412.8472

cwead@blockllc.com