



**AVISON
YOUNG**

Opportunity

- First floor suite with 2,422 sf available
- Second floor suite with 1,875 sf available
- Centrally located office building with quick access to I-40, I-24, and I-440
- Building overlooks I-40 East between Elm Hill Pike, and Murfreesboro Road
- Aggressive full service rates (less in-suite janitorial)
- After hours key card access

Get more information

Ben Burns, CCIM

Vice President

+1 615 727 7432

ben.burns@avisonyoung.com

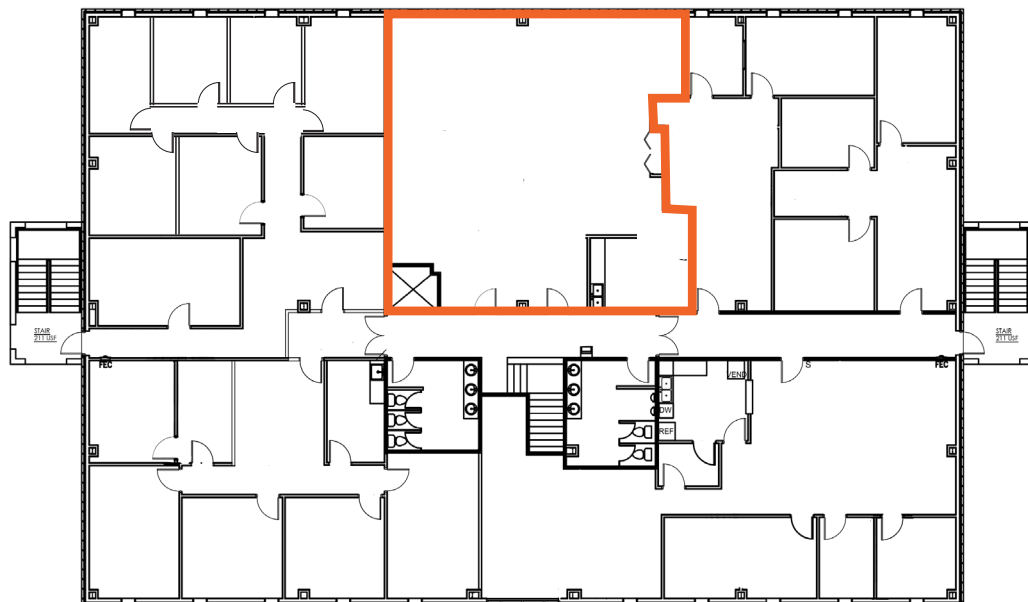
Floor one

Suite 122
2,422 sf



Floor two

Suite 220
1,875 sf



Map

