



12065 METRO PKWY | FORT MYERS, FL 33966

OFFICE SPACE ON METRO PARKWAY

FOR LEASE

CONTACT

Justin Ankney, CCIM
239-933-5594
justin@mayhughcommercial.com

Chris Ferritto
239-310-6257
chris@mayhughcommercial.com



13099 S. Cleveland Ave. Suite 410
Fort Myers, FL 33907

MAYHUGHCOMMERCIAL.COM

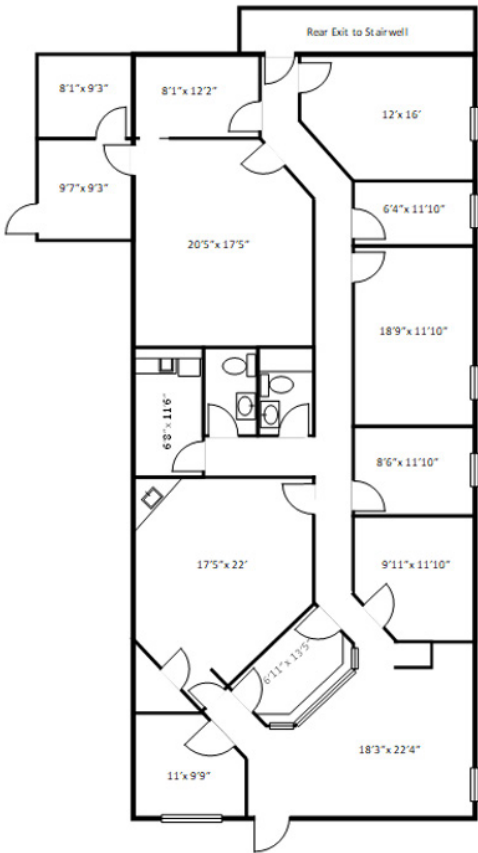
Professional Office Space for Lease with High Visibility on Metro Parkway

Professional office space for lease fronting on Metro Parkway on the second floor. Conveniently located in between two of Lee County's most traveled corridors, Colonial Blvd and Daniels Pkwy. Easy access to I-75 and US-41. Monument signage on Metro Pkwy. **Call us today to arrange a tour.**

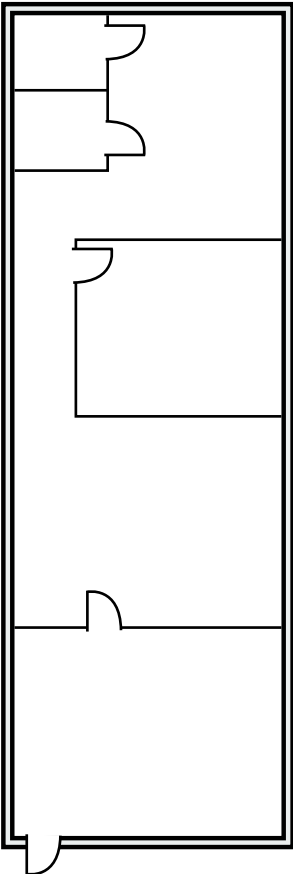
PROPERTY DETAILS

	Unit 200	Unit 202	Unit 203
RATE	\$13.00 PSF	\$14.00 PSF	\$14.00 PSF
LEASE TYPE	Gross	Gross	Gross
AVAILABLE	Immediate	Immediate	Immediate
SIZE	2,950± SF	1,150± SF	1,150± SF
ZONING	IL (Lee County)		
YEAR BUILT	1987		
BUILDING SIZE	22,594± SF		

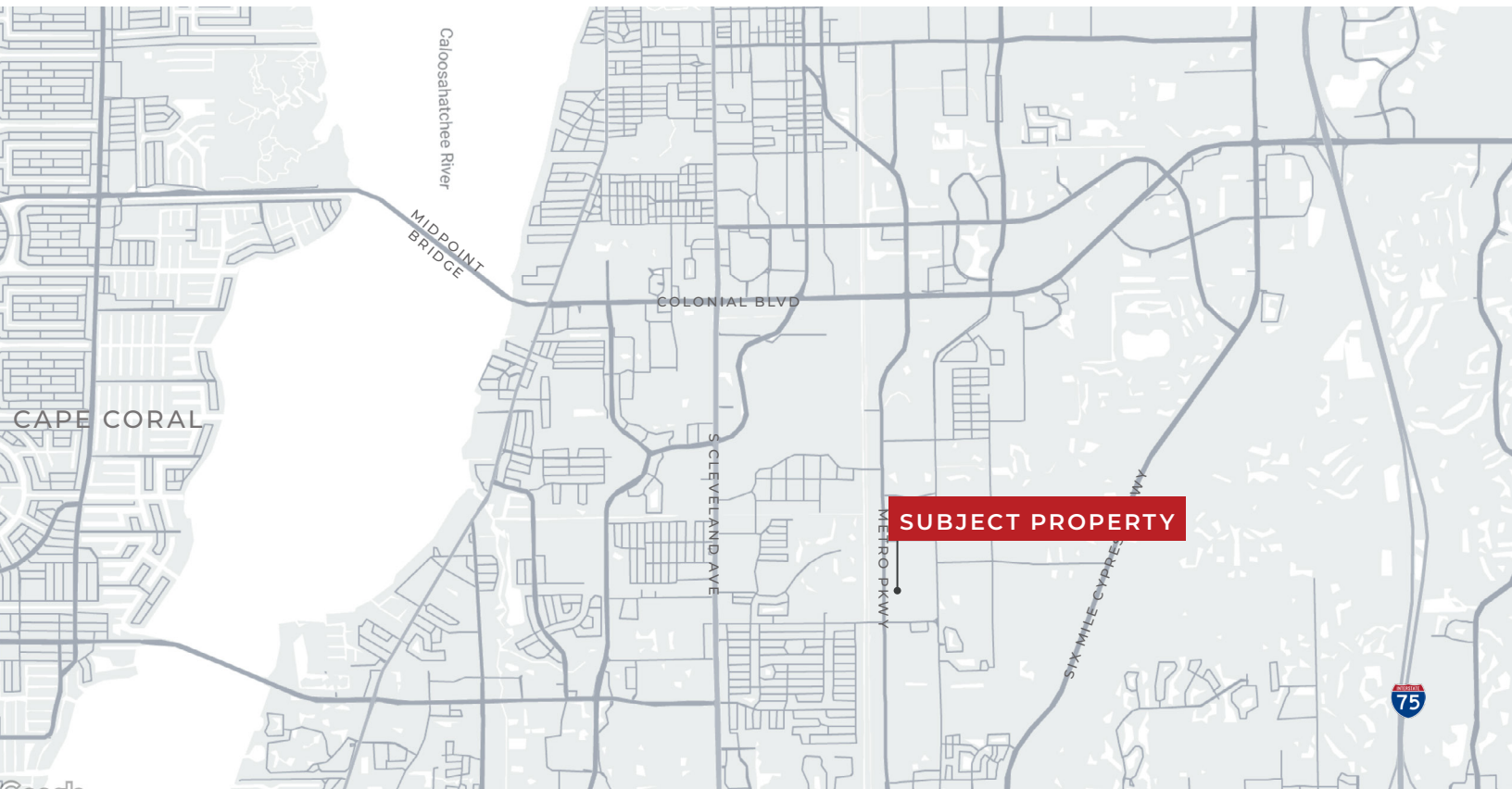
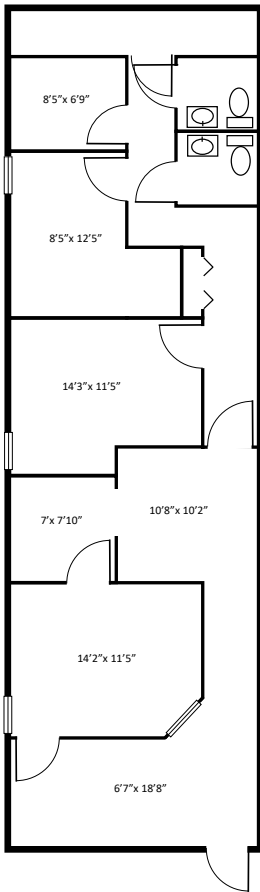
UNIT 200



UNIT 202



UNIT 203



This marketing brochure serves as a reference for informational purposes only and does not constitute an offer for sale or lease, nor does it serve as a solicitation for an offer to purchase or lease. While the information contained herein is believed to be reliable, its accuracy, completeness, or reliability cannot be guaranteed. Prospective buyers or lessees are encouraged to conduct their own investigations and due diligence to verify the information provided. All descriptions, dimensions, conditions, permissions for use, and other details are offered in good faith but are subject to verification. No express or implied warranty or representation is made regarding the accuracy of the information herein. The content is subject to errors, omissions, price changes, withdrawal without notice, and any special listing conditions imposed by our principals.