



AH REALTY TRUST



14,189SF OF OFFICE SPACE FOR LEASE

PROVIDENCE PLAZA

2907 PROVIDENCE RD., CHARLOTTE, NC 28211



PROVIDENCE PLAZA

2907 PROVIDENCE RD., CHARLOTTE, NC 28211

PROPERTY OVERVIEW



OFFERING SUMMARY

Available SF:	14,189 SF
Date Available:	March 1, 2027
Lease Rate:	Call Broker
Lease Type:	Full Service
Lot Size:	4.17 Acres
Year Built:	2007
Building Size:	103,118 SF

PROPERTY OVERVIEW

Position your business in the heart of Charlotte's highly desirable Cotswold submarket with 14,189 square feet of second-floor office space available within a dynamic 100,000+ square foot mixed-use property. This well-balanced asset features a vibrant blend of office and retail, creating built-in energy and daily foot traffic while maintaining a professional environment.

This property is centrally located in close proximity to Charlotte's major office and retail markets; Southpark, South End, and the Central Business District.

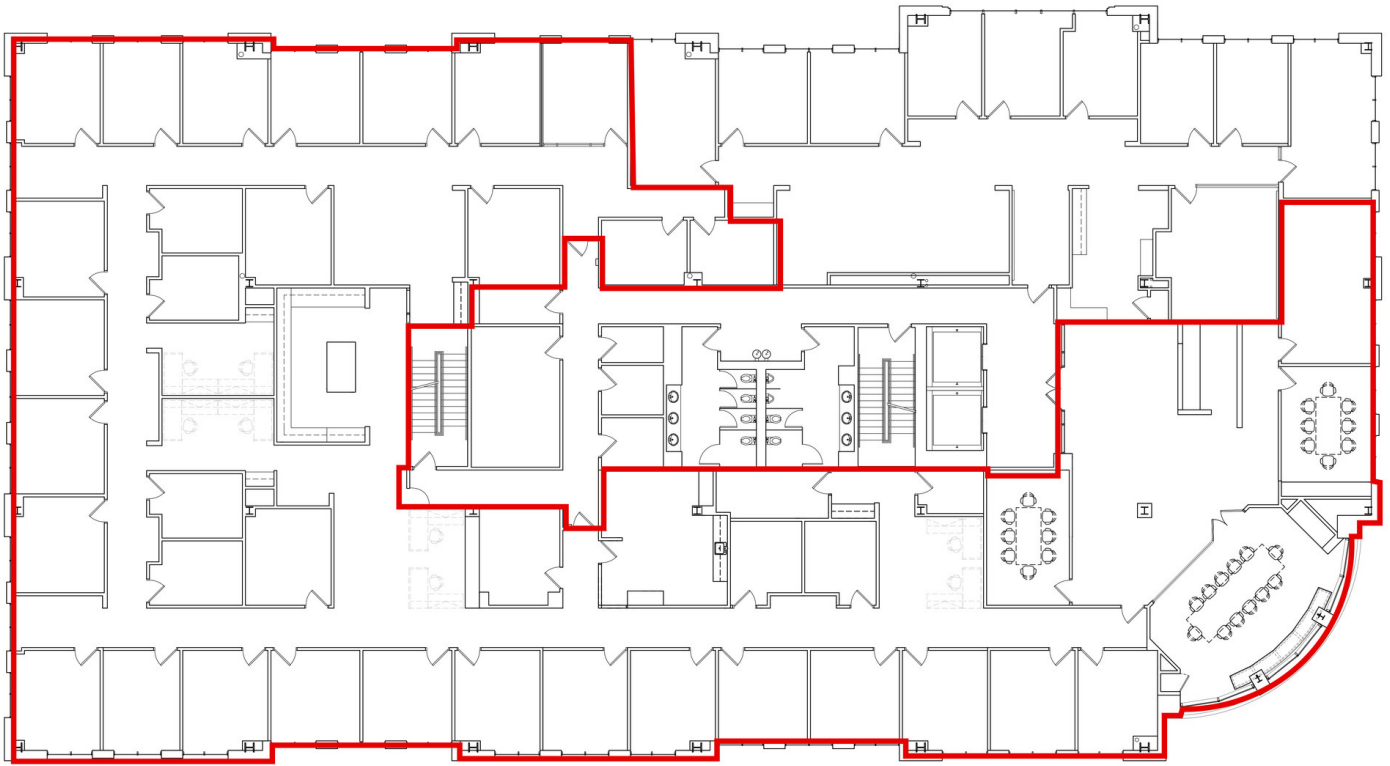
SUITE HIGHLIGHTS

- 14,189 SF Available
- Covered parking available
- 30+ private offices
- Large conference rooms, reception area, break room, copy room
- Double door entrance directly off elevator bank

PROVIDENCE PLAZA

2907 PROVIDENCE RD., CHARLOTTE, NC 28211

FLOOR PLAN

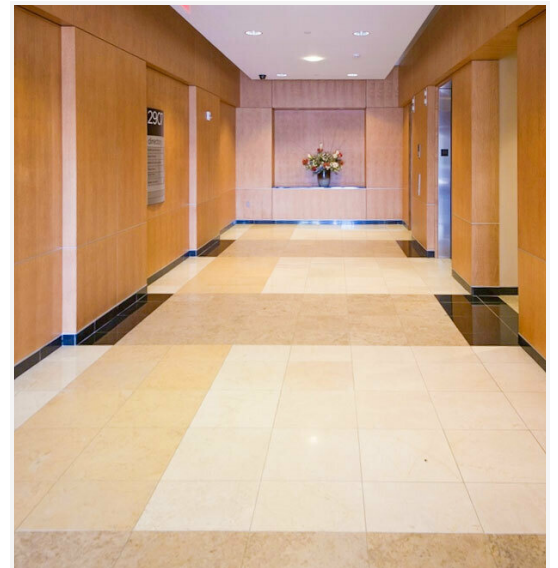


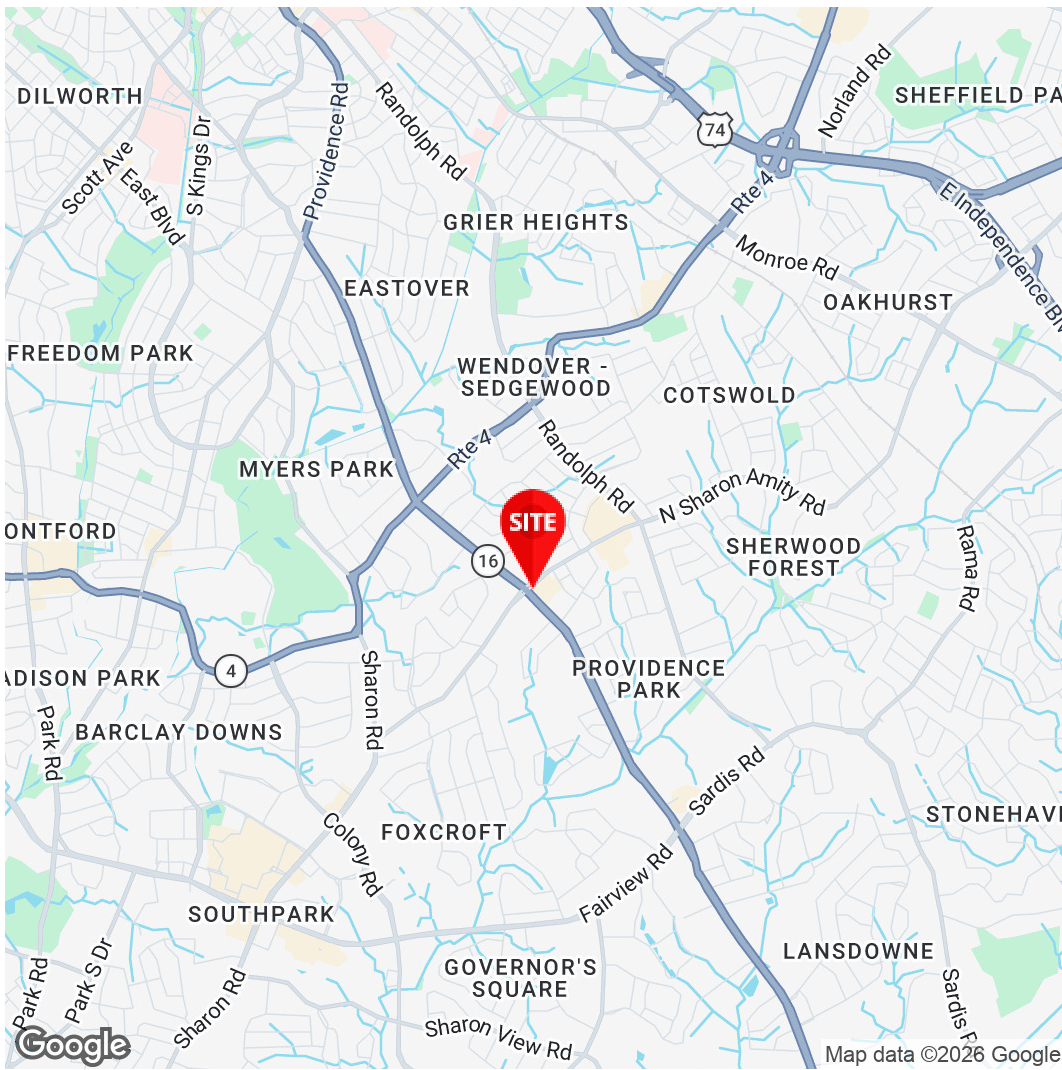
1 SUITE 200
14,189 Square Feet

PROVIDENCE PLAZA

2907 PROVIDENCE RD., CHARLOTTE, NC 28211

ADDITIONAL PHOTOS





Charles S. Neil, CCIM
Principal
980.819.0119
Charles.Neil@Divaris.Com



The information contained herein should be considered confidential and remains the sole property of Divaris Real Estate, Inc. at all times. Although every effort has been made to ensure accuracy, no liability will be accepted for any errors or omissions. Disclosure of any information contained herein is prohibited except with the express written permission of Divaris Real Estate, Inc.