

FOR SALE

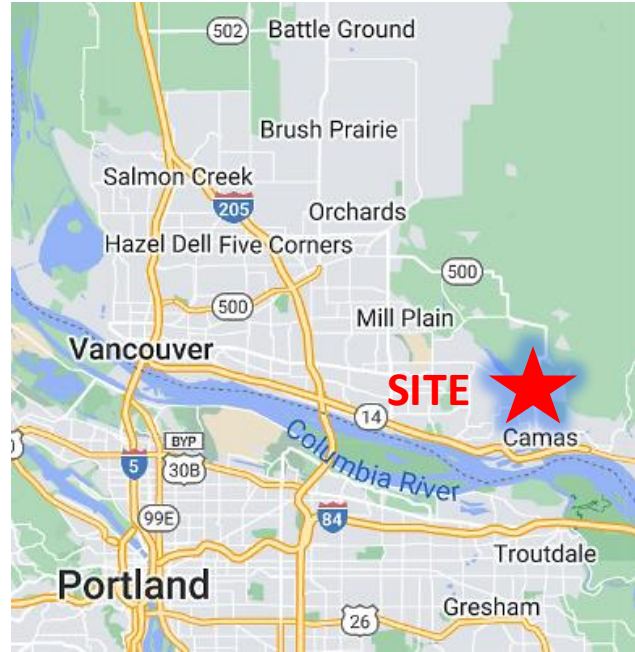
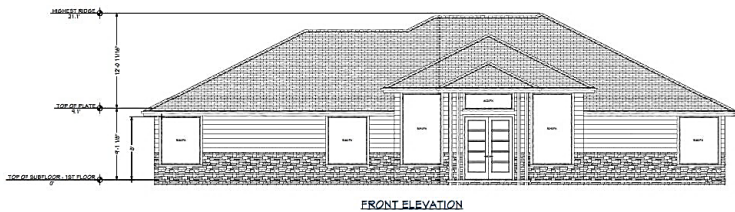
MEDICAL/DENTAL/OFFICE PERMIT READY

3631 NE Everett Street | Camas, WA 98607



900 Washington St, Suite 850, Vancouver, WA
360.750.5595 | www.fg-cre.com

PRICE
REDUCTION!



PROPERTY HIGHLIGHTS

- 0.61 acres of mixed-use (MX) land, permit- ready for a 4,000 SF medical/dental office building
- [Click here for additional details](#)
- 114' on NE Everett
- Sale Price: Originally \$850,000 – Now reduced to \$750,000

FOR MORE INFORMATION:

Adam Roselli, CCIM, SIOR
360.597.0568 | aroselli@fg-cre.com

FOR SALE

MEDICAL/DENTAL/OFFICE PERMIT READY

3631 NE Everett Street | Camas, WA 98607



900 Washington St, Suite 850, Vancouver, WA
360.750.5595 | www.fg-cre.com



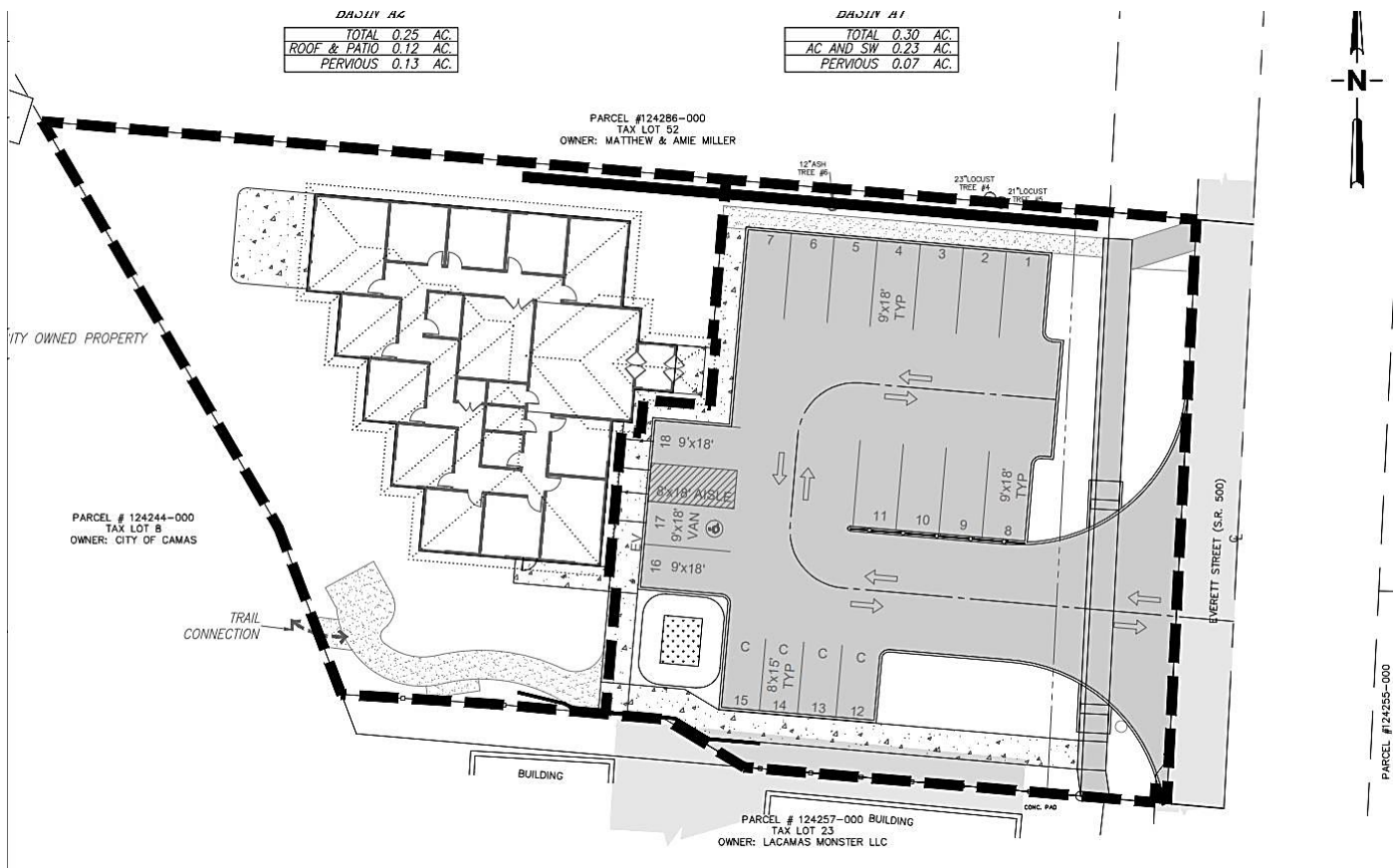
FOR SALE

MEDICAL/DENTAL/OFFICE PERMIT READY

3631 NE Everett Street | Camas, WA 98607



900 Washington St, Suite 850, Vancouver, WA
360.750.5595 | www.fg-cre.com



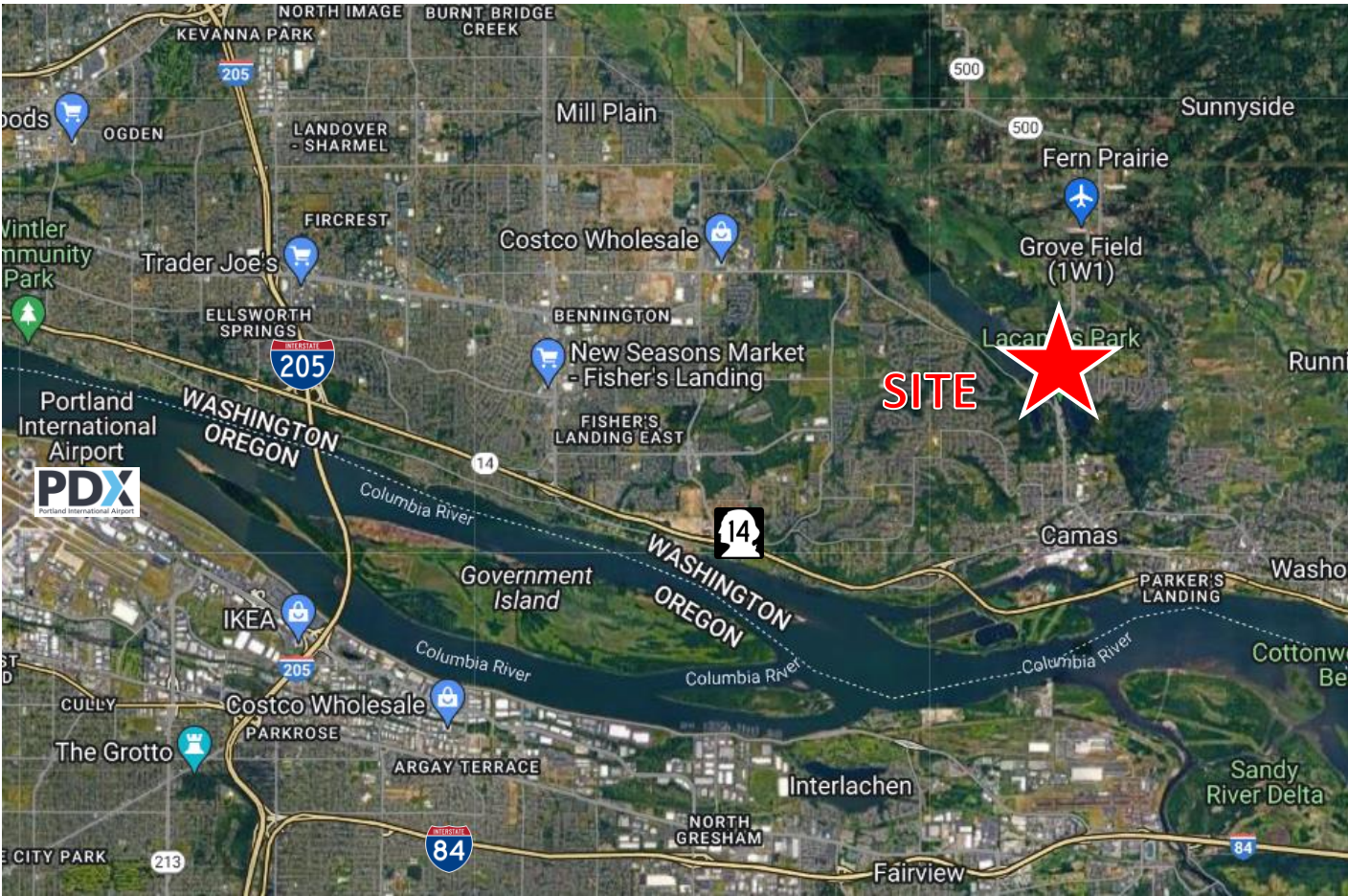
FOR SALE

MEDICAL/DENTAL/OFFICE PERMIT READY

3631 NE Everett Street | Camas, WA 98607



900 Washington St, Suite 850, Vancouver, WA
360.750.5595 | www.fg-cre.com



2023 DEMOGRAPHICS

	1 Mile	3 Mile	5 Mile
Est. Population	6,497	35,804	97,870
2028 Projected Population	6,980	38,005	102,784
Est. Average Household Income	\$136,068	\$134,695	\$119,977
Est. Total Businesses	69	796	3,317
Est. Total Employees	617	9,942	35,724



This statement with the information it contains is given with the understanding that all the negotiations relating to the purchase, rental or leasing of the property described above shall be conducted through this office. The above information, while not guaranteed, has been secured from sources we believe to be reliable.