



LAND FOR SALE  
**+/- 12.935 ACRES**

SWC HUNTLY ROAD & LONGMEADOW PARKWAY

CARPENTERSVILLE, IL

**CBRE**



# PROPERTY INFO

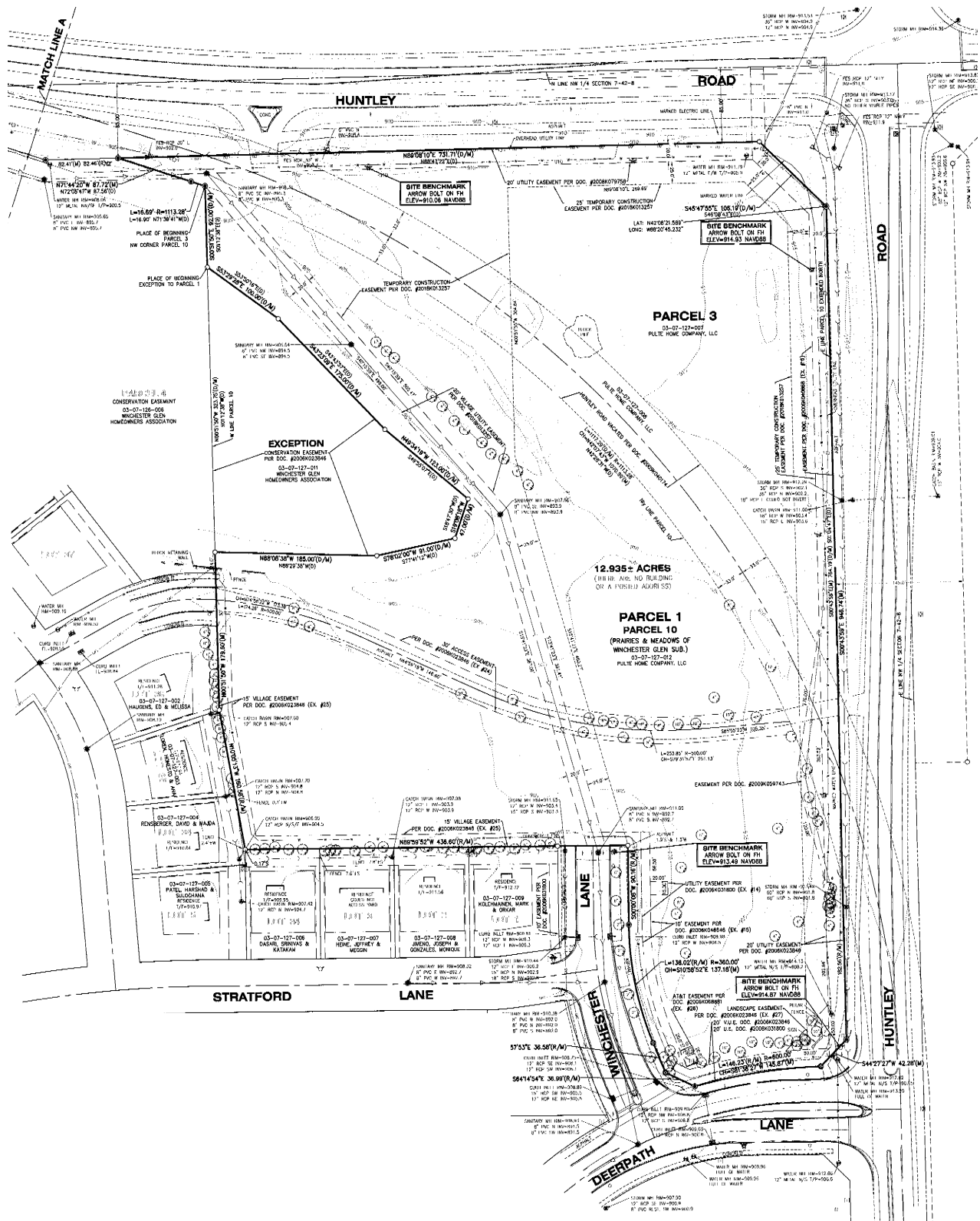
- **Sale Price:** \$2,000,000
- **Land Size:** +/- 12.935 Acres
- **Traffic Count:** VPD 14,450
- **Taxes:** \$16,464.50
- **Zoning:** C-2
- Close proximity to Randall Road Corridor
- Signalized intersection

DEMOGRAPHICS	1 MILE	3 MILES	5 MILES
POPULATION	3,973	40,921	138,402
AVERAGE HH INCOME	\$158,273	\$161,878	\$137,413
DAYTIME POPULATION	4,348	34,063	117,064



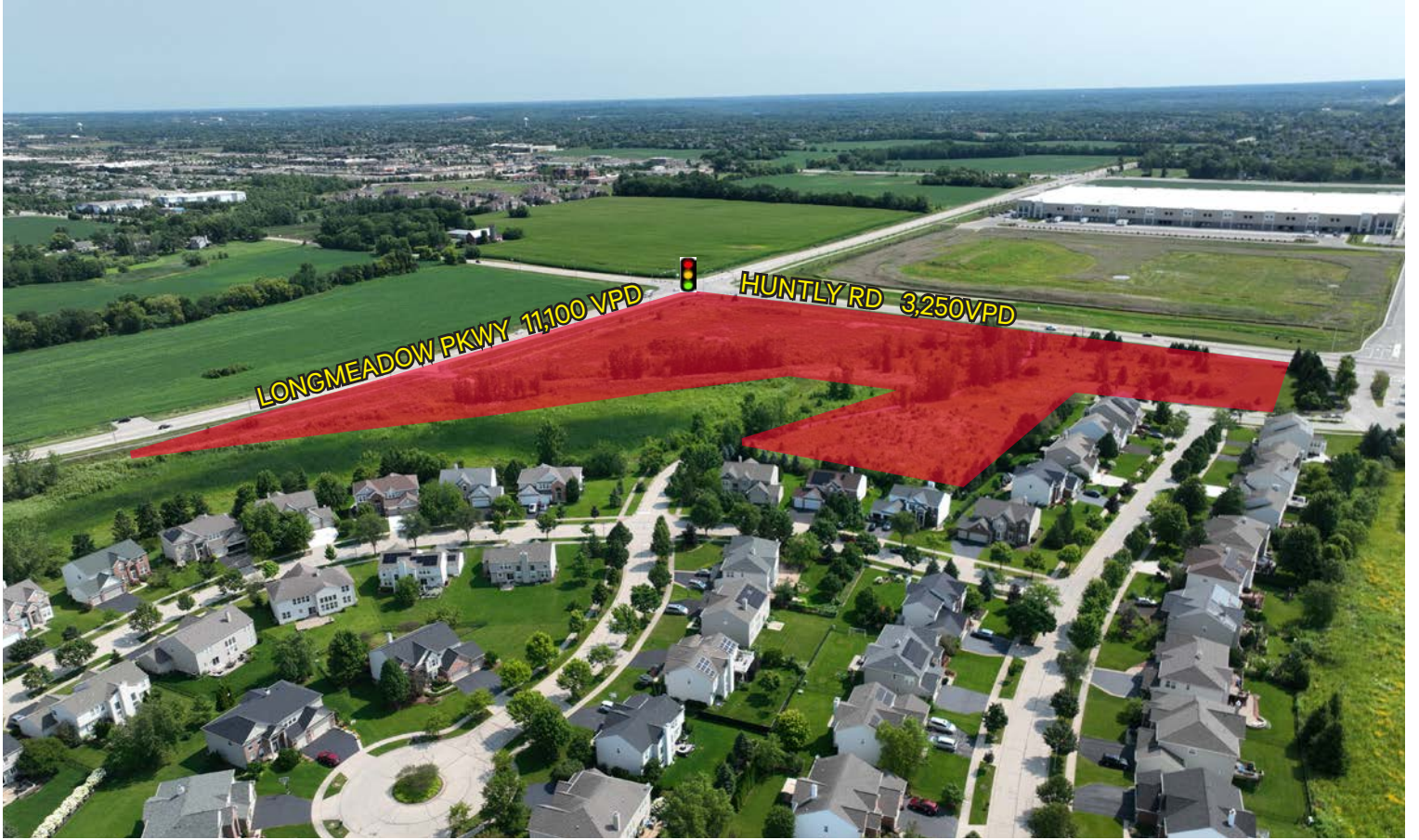


# SURVEY





PHOTOS







LAND FOR SALE  
**+/- 12.935 ACRES**

SWC HUNTLY ROAD & LONGMEADOW PARKWAY

CARPENTERSVILLE, IL

**CONTACT US**

**JACOB DELL**

First Vice President

+1 630 573 7088

[jacob.dell@cbre.com](mailto:jacob.dell@cbre.com)

**CBRE**

© 2020 CBRE, Inc. All rights reserved. This information has been obtained from sources believed reliable, but has not been verified for accuracy or completeness. You should conduct a careful, independent investigation of the property and verify all information. Any reliance on this information is solely at your own risk. CBRE and the CBRE logo are service marks of CBRE, Inc. All other marks displayed on this document are the property of their respective owners, and the use of such logos does not imply any affiliation with or endorsement of CBRE. Photos herein are the property of their respective owners. Use of these images without the express written consent of the owner is prohibited.