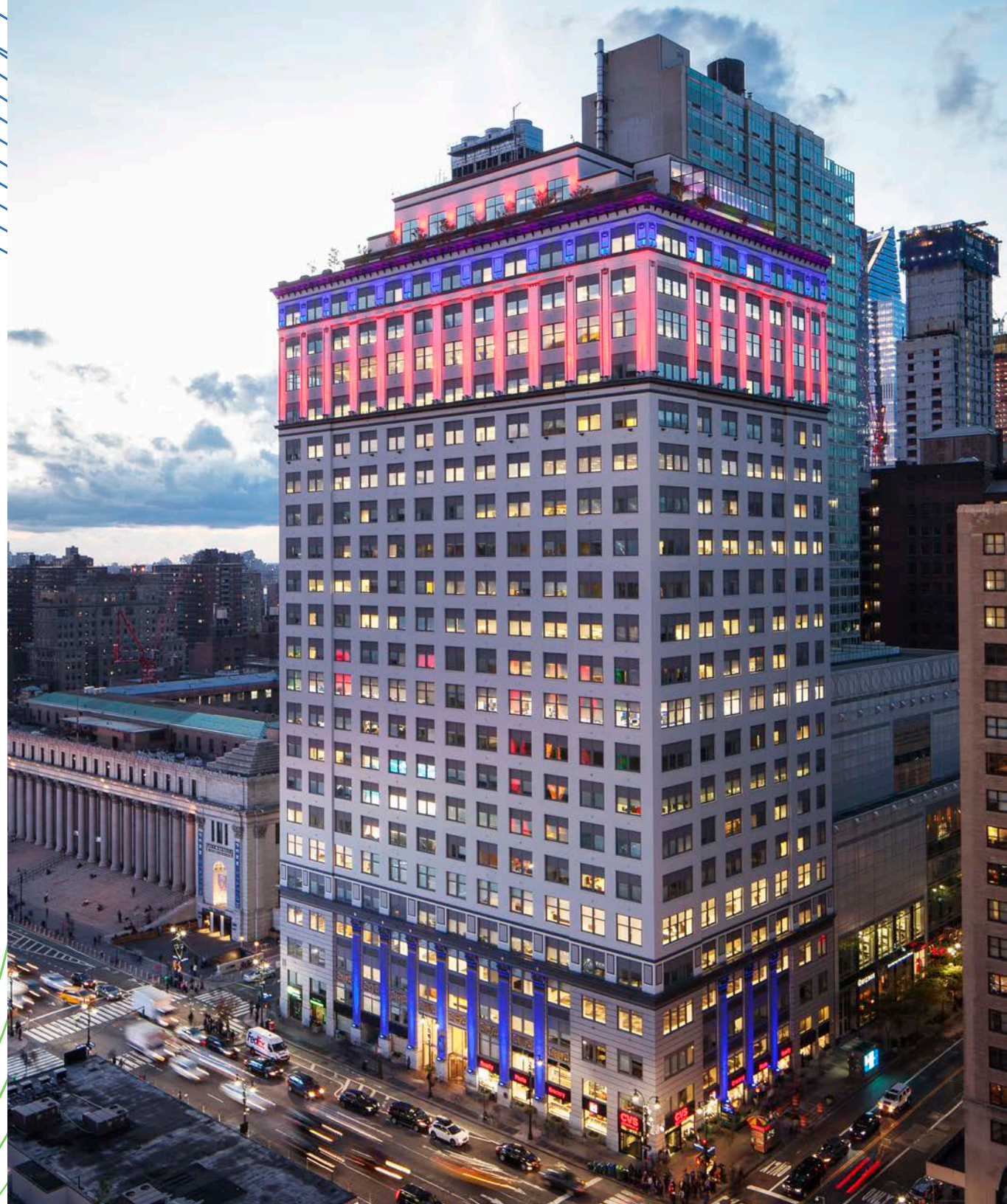


**WELCOME BACK  
TO THE NEW**

PENN **5** PLAZA





# Current Availabilities

PARTIAL 24<sup>TH</sup> FLOOR

**3,866 RSF | Available 5/2021**

*Large Landscaped terrace*

PARTIAL 24<sup>TH</sup> FLOOR

**3,960 RSF | Available 4/2022**

*Large Landscaped terrace*

PARTIAL 16<sup>TH</sup> FLOOR

**14,943 RSF | Available**

PARTIAL 12<sup>TH</sup> FLOOR

**14,292 RSF | Available**

PARTIAL 9<sup>TH</sup> FLOOR

**14,292 RSF | Available**

*(Full-floor growth opportunity 1/2024)*

ENTIRE 6<sup>TH</sup> FLOOR

**28,977 RSF | Available 6/2022**

ENTIRE 3<sup>RD</sup> FLOOR

**28,977 RSF | Available 4/2022**

PARTIAL 2<sup>ND</sup> FLOOR

**11,457 RSF | Available 4/2022**

## All New Safety Features:

- **UV HVAC system** that kills viruses and bacteria for maximum air purification
- **Touchless access** from building entrance and concierge, to elevators, programmed to designated tenant floors

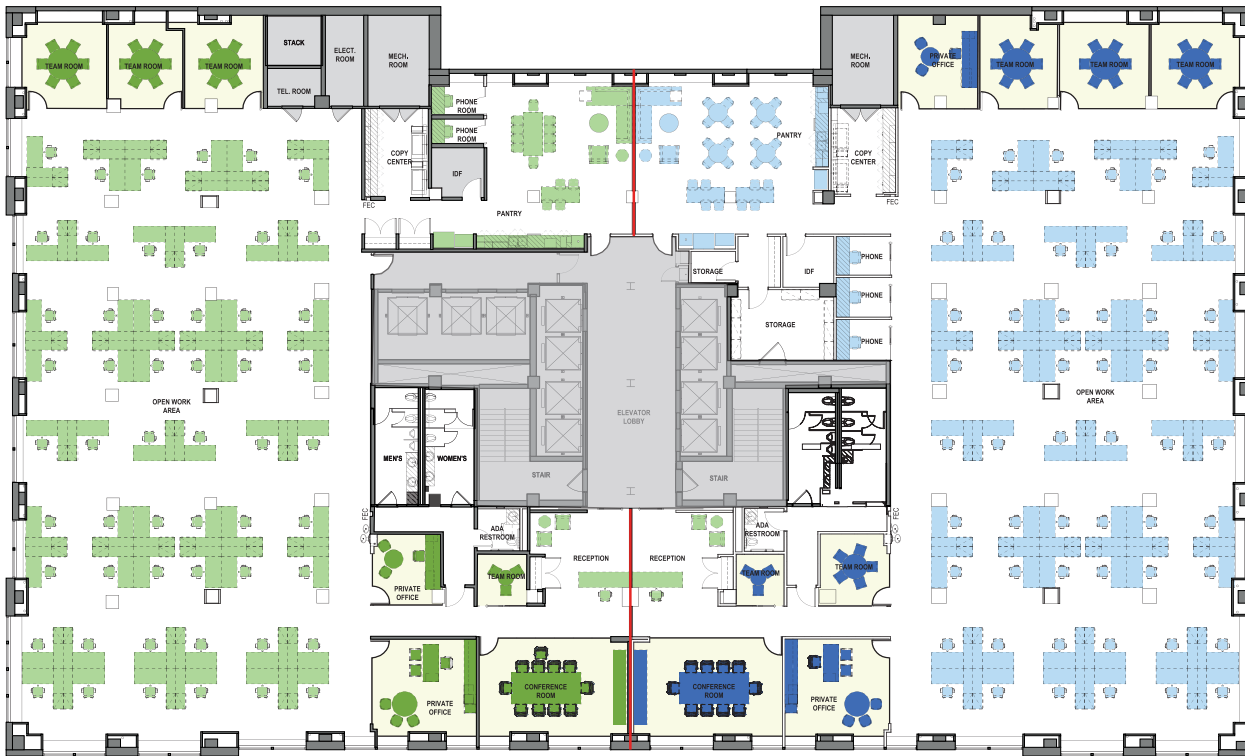
## Building Features:

- 14' high ceilings
- Oversized windows
- Great views and natural light
- New lobby, elevators and infrastructure

# 5 Penn Plaza is at the Center of it All



Adjacent to Farley and Hudson Yards



## Low Density Half Floor

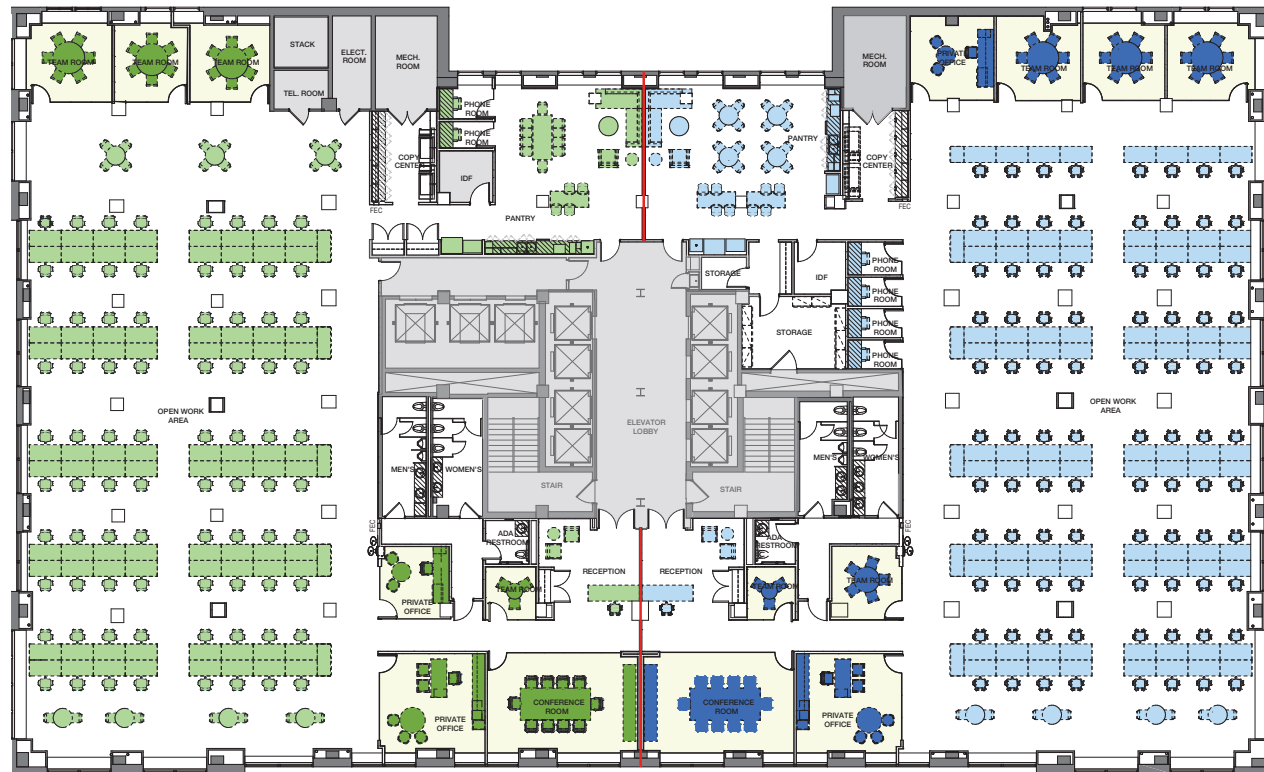
9th 12th and 16th Floors

[VIEW HALF-FLOOR VIRTUAL TOUR](#)

## High Density Half Floor

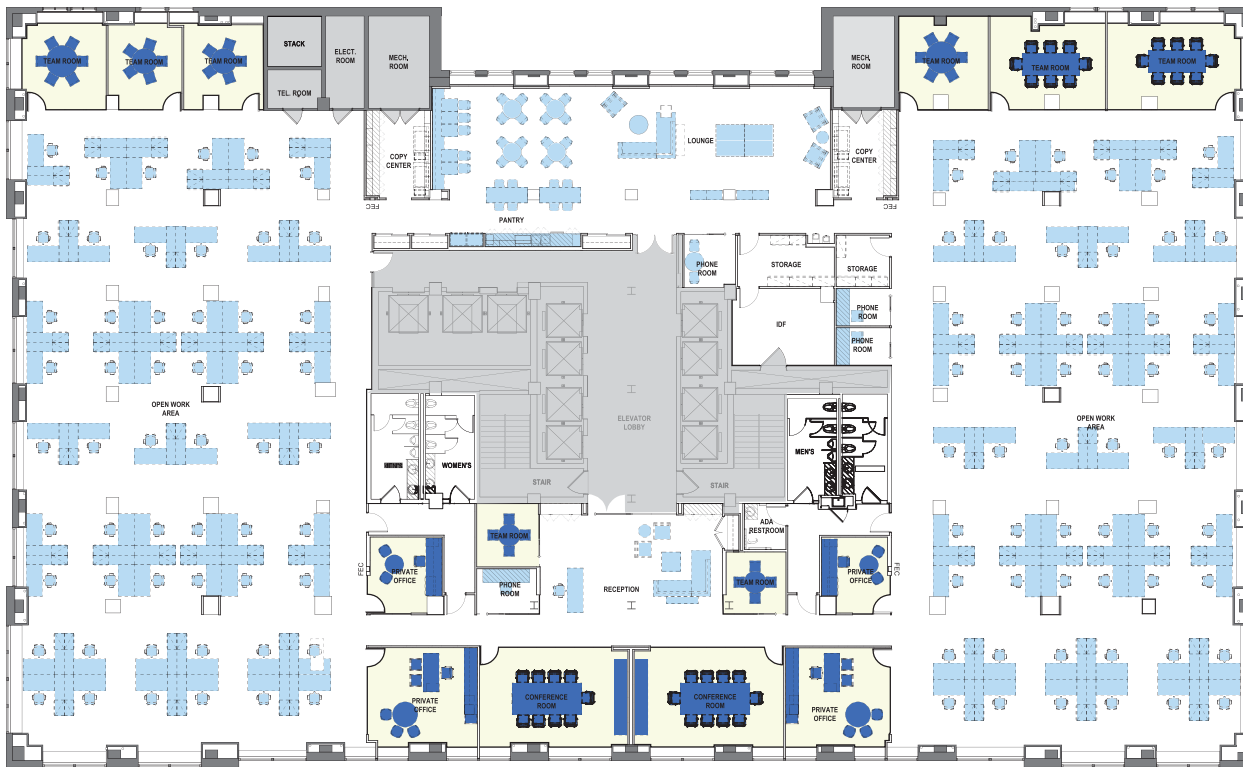
9th 12th and 16th Floors

[VIEW HALF-FLOOR VIRTUAL TOUR](#)









## Low Density Full Floor

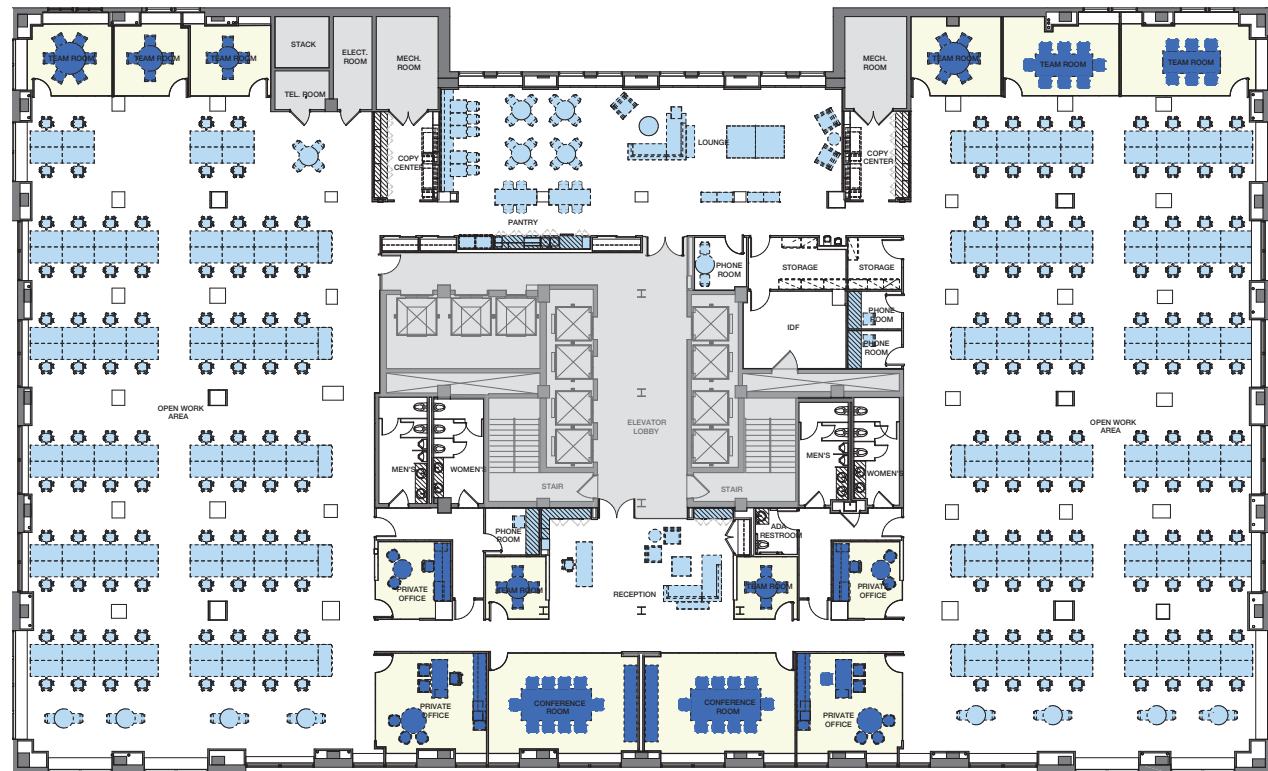
9th 12th and 16th Floors

VIEW HALF-FLOOR VIRTUAL TOUR

## High Density Full Floor

9th 12th and 16th Floors

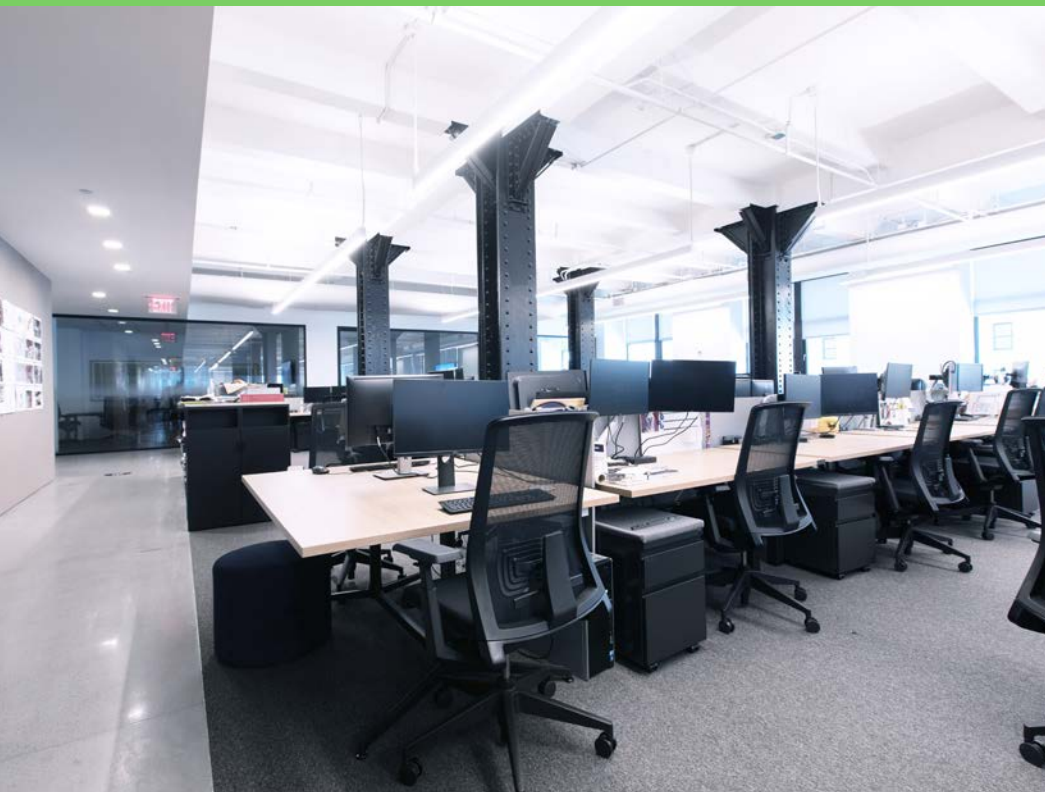
VIEW HALF-FLOOR VIRTUAL TOUR







Sample Tenant Installations

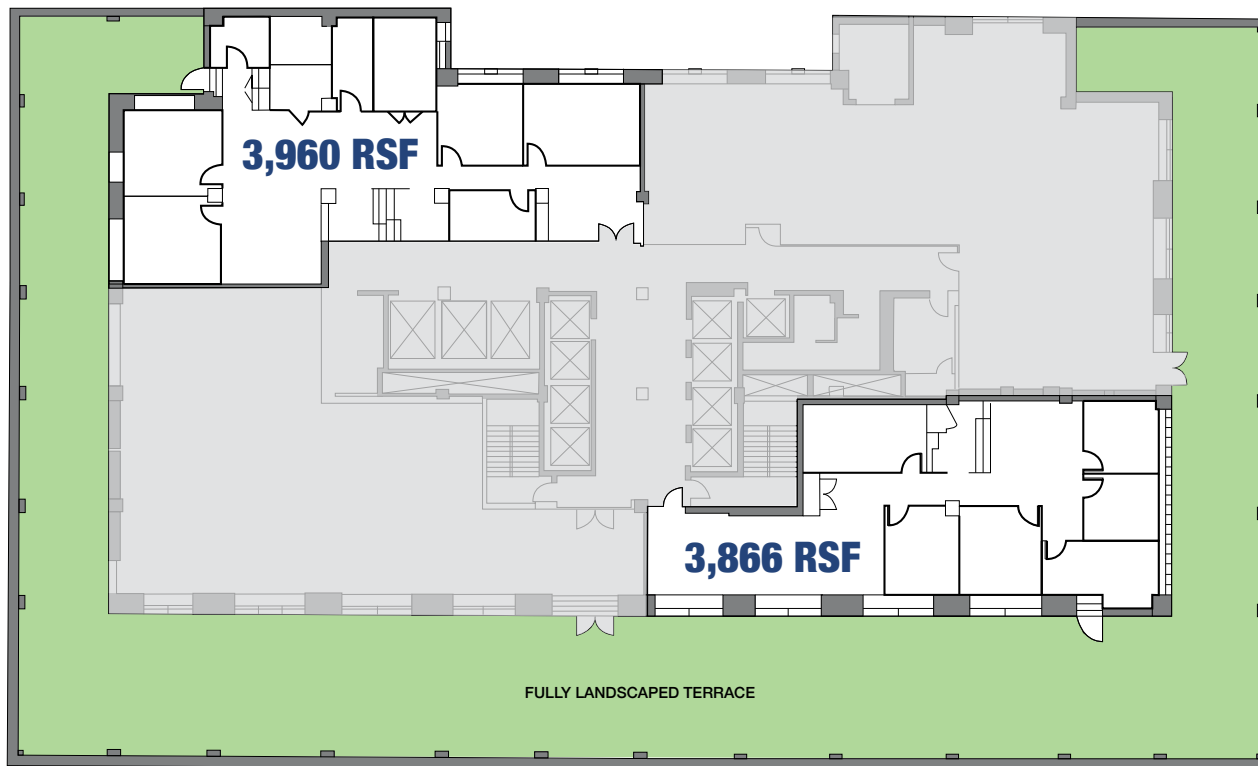




Southern View for Upper Floors







---

## Boutique Units with Sweeping Views

24th Floor - Partial Floor Plans

---







**Peter Turchin**

212.984.8364

[peter.turchin@cbre.com](mailto:peter.turchin@cbre.com)

**Jason Pollen**

212.984.6675

[jason.pollen@cbre.com](mailto:jason.pollen@cbre.com)

**Jordan Donohue**

212.656.0584

[jordan.donohue@cbre.com](mailto:jordan.donohue@cbre.com)

**Craig Motola**

212.895.0970

[craig.motola@gmail.com](mailto:craig.motola@gmail.com)

**CBRE.us**

