

FOR LEASE



303 MAIN STREET - COTTAGE GROVE, OREGON

HIGH-TRAFFIC RIVERFRONT OFFICE or RETAIL

- 1,500 SF - 5,500 SF (SPACE IS DIVISIBLE)
- RECENTLY RENOVATED BUILDING
- RIVERFRONT OUTSIDE COMMON AREA
- ON-SITE PARKING

Base Rent: \$0.95/SF/Month

NNN: \$0.15/SF/Month



www.campbellre.com

For more information contact:

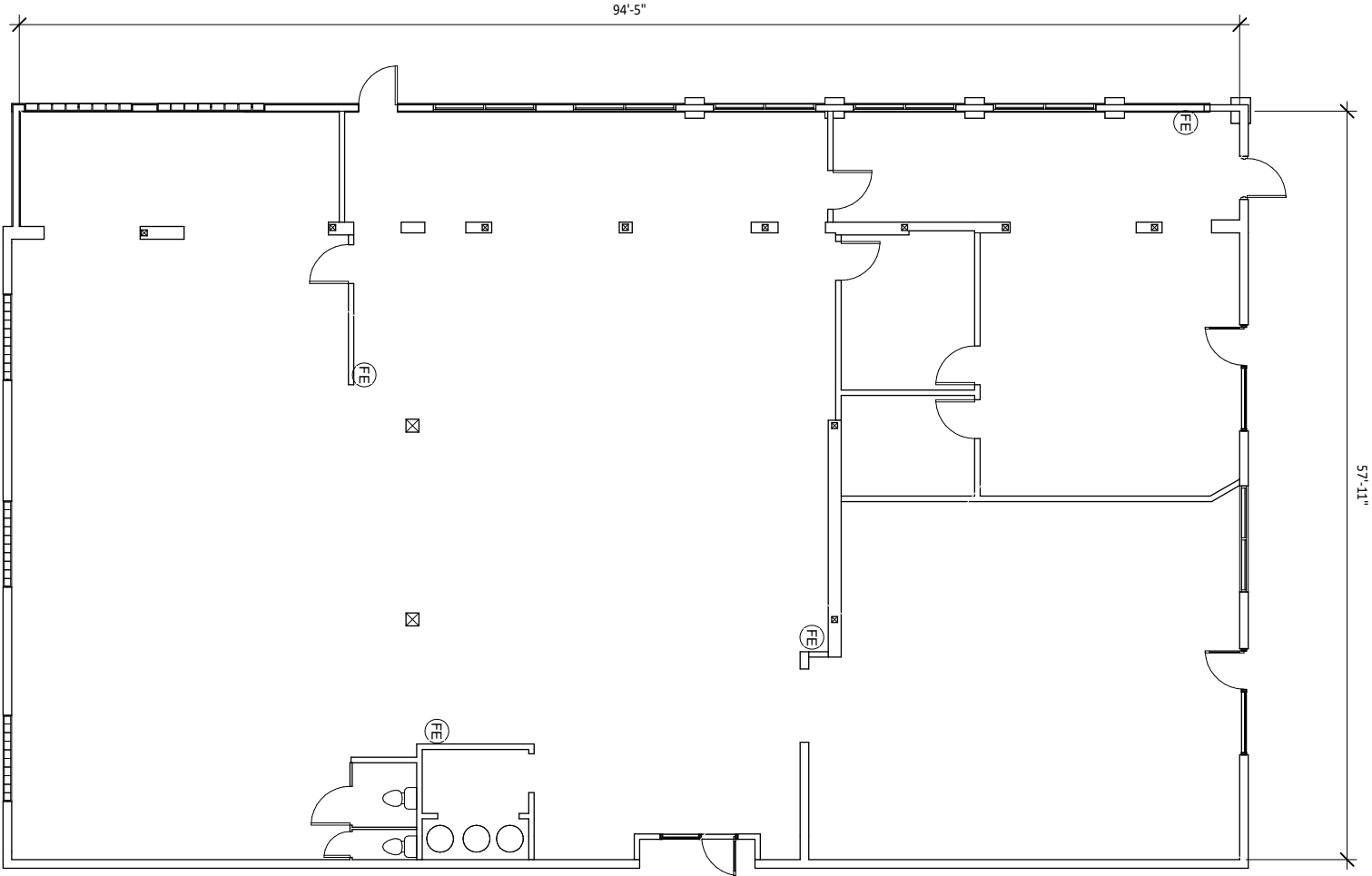
ABBY HYLAND
abby@campbellre.com
(541) 556-4813

Licensed in the State of Oregon

MILTON OILAR
miltono@campbellre.com
(541) 484-2214

Licensed in the State of Oregon

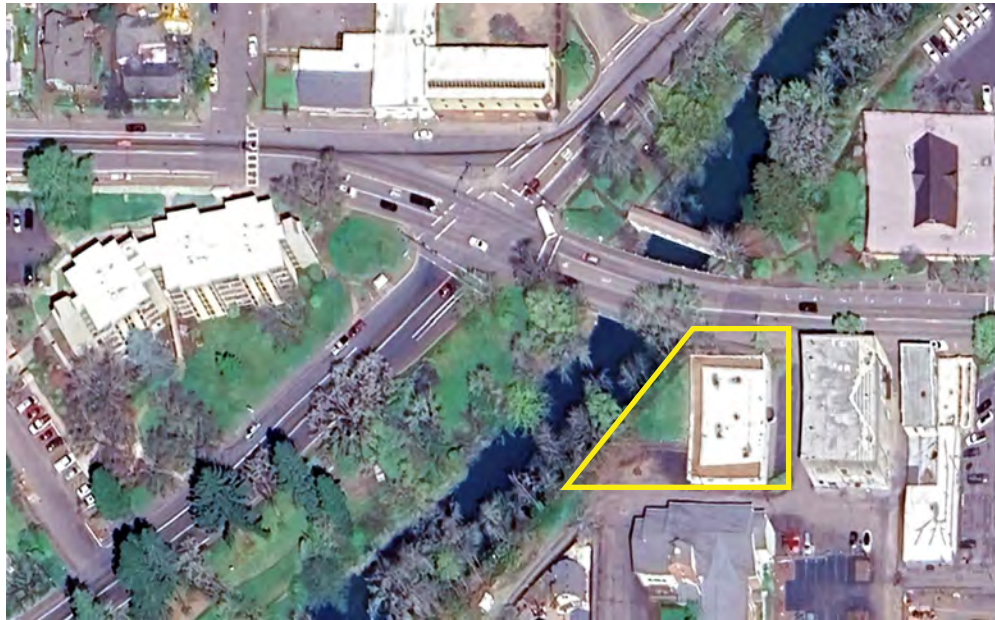
BUILDING FLOOR PLAN



The information in this package was obtained from sources deemed reliable, and is not guaranteed by agent. Package is subject to change, error or omission, prior sale or lease, correction or withdrawal. Any party contemplating purchase is urged to conduct their own independent study and inspection.



RIVERFRONT COMMON AREA



The information in this package was obtained from sources deemed reliable, and is not guaranteed by agent. Package is subject to change, error or omission, prior sale or lease, correction or withdrawal. Any party contemplating purchase is urged to conduct their own independent study and inspection.

PROPERTY LOCATION

This space is located on Main Street in Historic Downtown Cottage Grove with views of the river, great visibility and high customer traffic. Cottage Grove is the third largest city in Lane County. The city is located 20 miles south of Eugene-Springfield and 10 miles south of Creswell, Oregon.



The information in this package was obtained from sources deemed reliable, and is not guaranteed by agent. Package is subject to change, error or omission, prior sale or lease, correction or withdrawal. Any party contemplating purchase is urged to conduct their own independent study and inspection.