



FOR SALE

TRIPLEX

Capitol Hill Historic Triplex—
Downtown SLC at Your Doorstep

48 EAST 200 NORTH
SALT LAKE CITY, UT 84103

GREG RATLIFF
Greg@acresutah.com
801.580.0410

JODY JONES, CCIM
Jody@acresutah.com
801.557.2175

ALIGN
COMPLETE REAL ESTATE SERVICES

48 EAST 200 NORTH, SALT LAKE CITY, UT 84103

THE OFFERING

PROPERTY ADDRESS	48 East 200 North, Salt Lake City, UT 84103
SQUARE FEET	2,200 SF
TRIPLEX:	1 Bed/ 1 bath Units
ACRES	.10 Acres
LAUNDRY	On Site
PARCEL ID:	09-31-309-034
OFFERING PRICE	\$684,000



THE OFFERING

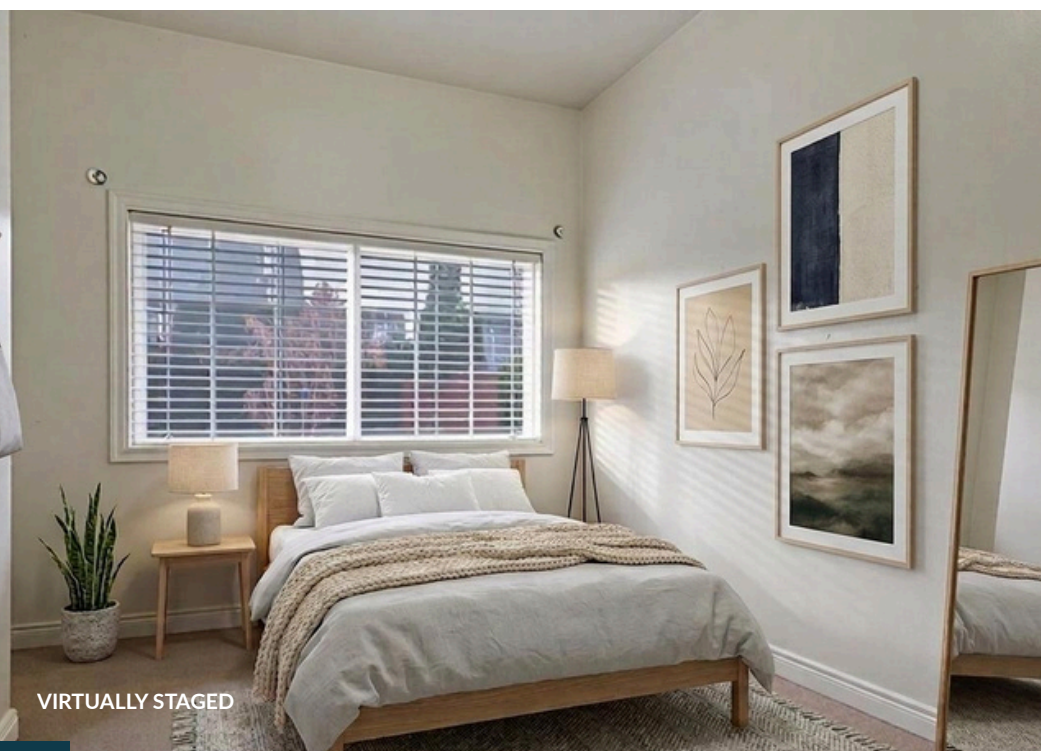




VIRTUALLY STAGED



VIRTUALLY STAGED



VIRTUALLY STAGED



VIRTUALLY STAGED

NEARBY AMENITIES

UTAH STATE CAPITAL

CIRY CREEK

WEST HIGH SCHOOL

SITE

LDS CONFERENCE CENTER

TEMPLE SQUARE

DELTA CENTER

CITY CREEK CENTER

48 EAST 200 NORTH
SALT LAKE CITY, UT 84103



CONTACT

GREG RATLIFF
Greg@acresutah.com
801.580.0410

JODY JONES, CCIM
Jody@acresutah.com
801.557.2175

ALIGN

COMPLETE REAL ESTATE SERVICES

1075 EAST HOLLYWOOD AVENUE
SALT LAKE CITY, UT. 84105