

## Highlights

- Suite 200 | 7,661 RSF
- Available June 2027
- Double door lobby exposure
- Phenomenal western views
- Exposed cloud ceiling and polished concrete floors
- Ideally located in Westshore submarket at Tampa International Airport

## Get more information

**Clay Witherspoon**

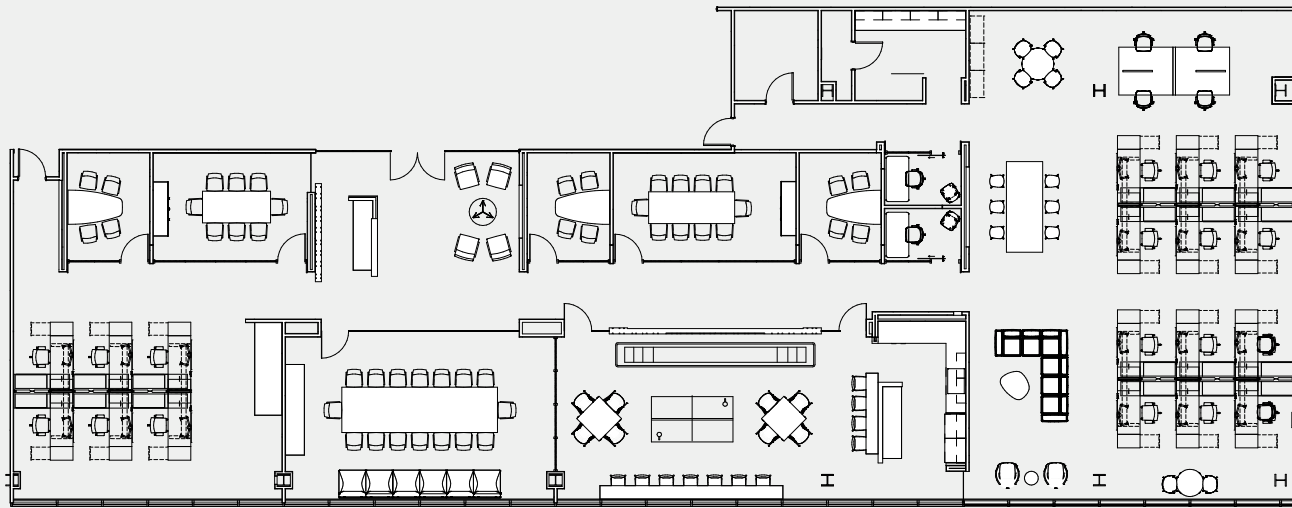
Managing Director | Principal  
+1 813 444 0626  
clay.witherspoon@avisonyoung.com

**Laurie Hynes**

Sr. Client Services Coordinator  
+1 813 444 0621  
laurie.hynes@avisonyoung.com

[avisonyoung.com](http://avisonyoung.com)

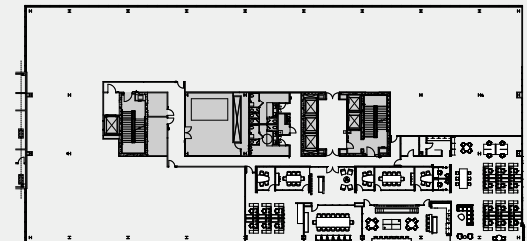
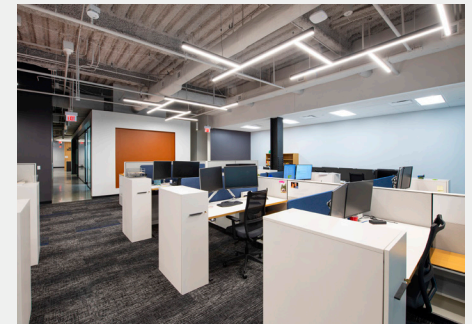




*furniture shown is for illustrative purposes only*

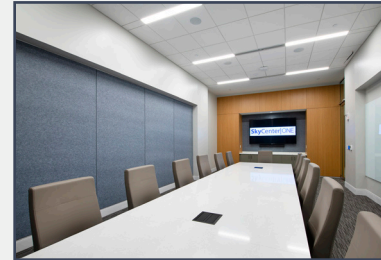
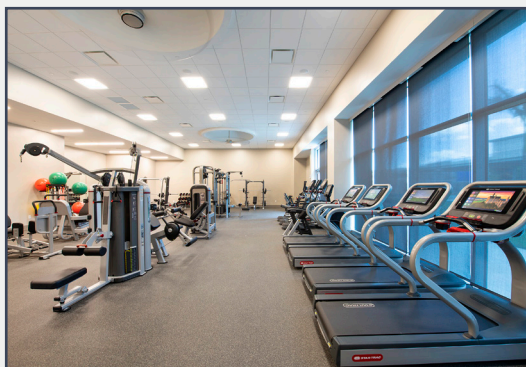
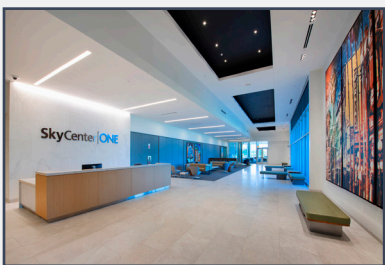
**Suite 200**  
**7,661 sf**

- Mix of open area for workstations and open collaboration areas
- 3 huddle rooms/ offices
- 2 phone rooms
- 2 medium conference rooms
- Large conference room
- Breakroom/employee lounge
- Storage
- IT room



## SkyCenter Amenities & Features

- Conference Center with seating for up to 100
- Executive board room with seating for up to 16
- State of the art fitness center with locker rooms and towel service
- Nature's Table cafe serving breakfast and lunch
- LEED Platinum certified
- 4/1000 covered parking
- 55 EV charging stations
- Visitor parking



- Monitored on-site security
- Terminal access via SkyConnect tram - 10 minute from desk to terminal
- Floor to ceiling glass
- Dual power feed
- Class 4 building construction
- Two regional malls within 1 mile radius
- Wellness walking trail
- 15,000 sf rooftop terrace on Atrium