

FOR SUBLEASE

Airport Business Center South

7,605 SF AVAILABLE



Dan Lofgren

Vice President
(952) 525-3334
Dan.Lofgren@ForteREP.com
www.ForteREP.com

Joe Jetland

Senior Associate
(952) 525-3339
Joe.Jetland@ForteREP.com
www.ForteREP.com



FORTE
REAL ESTATE PARTNERS

SUBLEASE SPACE FEATURES

7848 12th Avenue South, Suite 7846 | Bloomington

Building Information

Building Size	67,534 SF
Site Size	8.11 Acres
Year Built	1979
Floors	1
Parking Ratio	1.19/1000
Clear Height	12'
Dock Loading	Available

Lease Terms

Lease Rate	Negotiable
Space Available	7,605 SF
Lease Expiration	August 31, 2025



- Office/tech/warehouse space for sublease
- Easy access to I-494
- Located in the heart of Bloomington, just minutes from the Mall of America and the Minneapolis-St Paul International Airport
- Excellent access to retail, hotels, restaurants and fitness centers
- Ample parking

Dan Lofgren
Vice President
(952) 525-3334
Dan.Lofgren@ForteREP.com
www.ForteREP.com

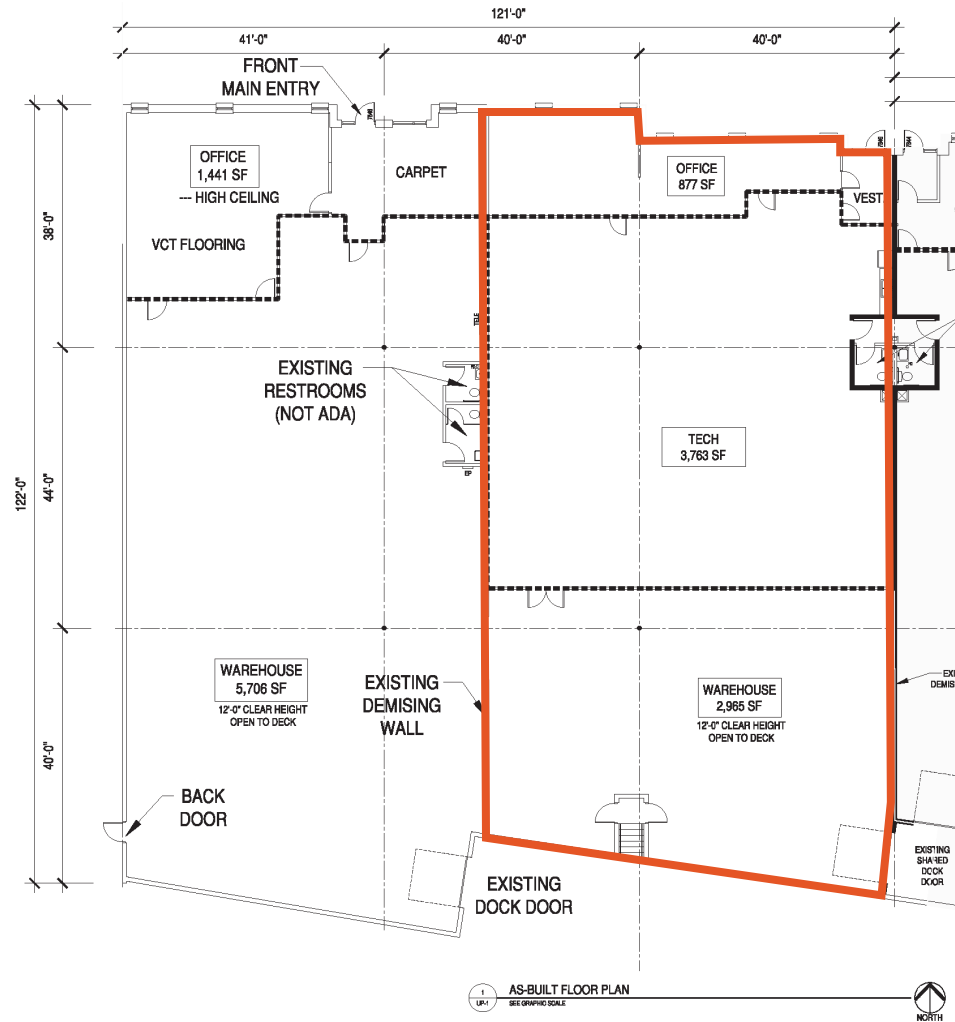
Joe Jetland
Senior Associate
(952) 525-3339
Joe.Jetland@ForteREP.com
www.ForteREP.com



FLOOR PLAN

7848 12th Avenue South, Suite 7846 | Bloomington

SUITE 7846	
OFFICE SPACE	877 SF
TECH SPACE	3,763 SF
<u>WAREHOUSE SPACE</u>	<u>2,965 SF</u>
TOTAL	7,605 SF



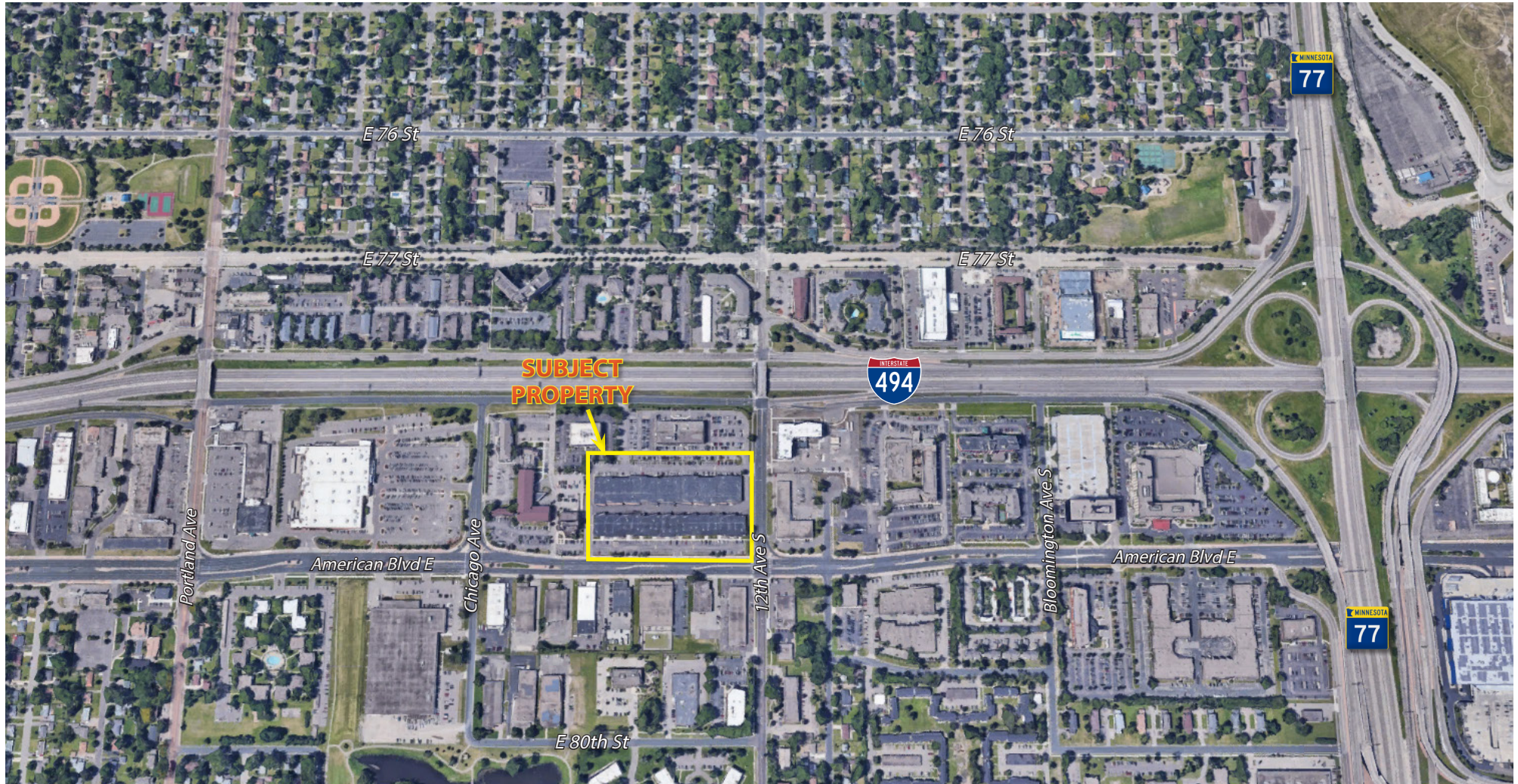
Dan Lofgren
Vice President
(952) 525-3334
Dan.Lofgren@ForteREP.com
www.ForteREP.com

Joe Jetland
Senior Associate
(952) 525-3339
Joe.Jetland@ForteREP.com
www.ForteREP.com



AERIAL VIEW

7848 12th Avenue South, Suite 7846 | Bloomington



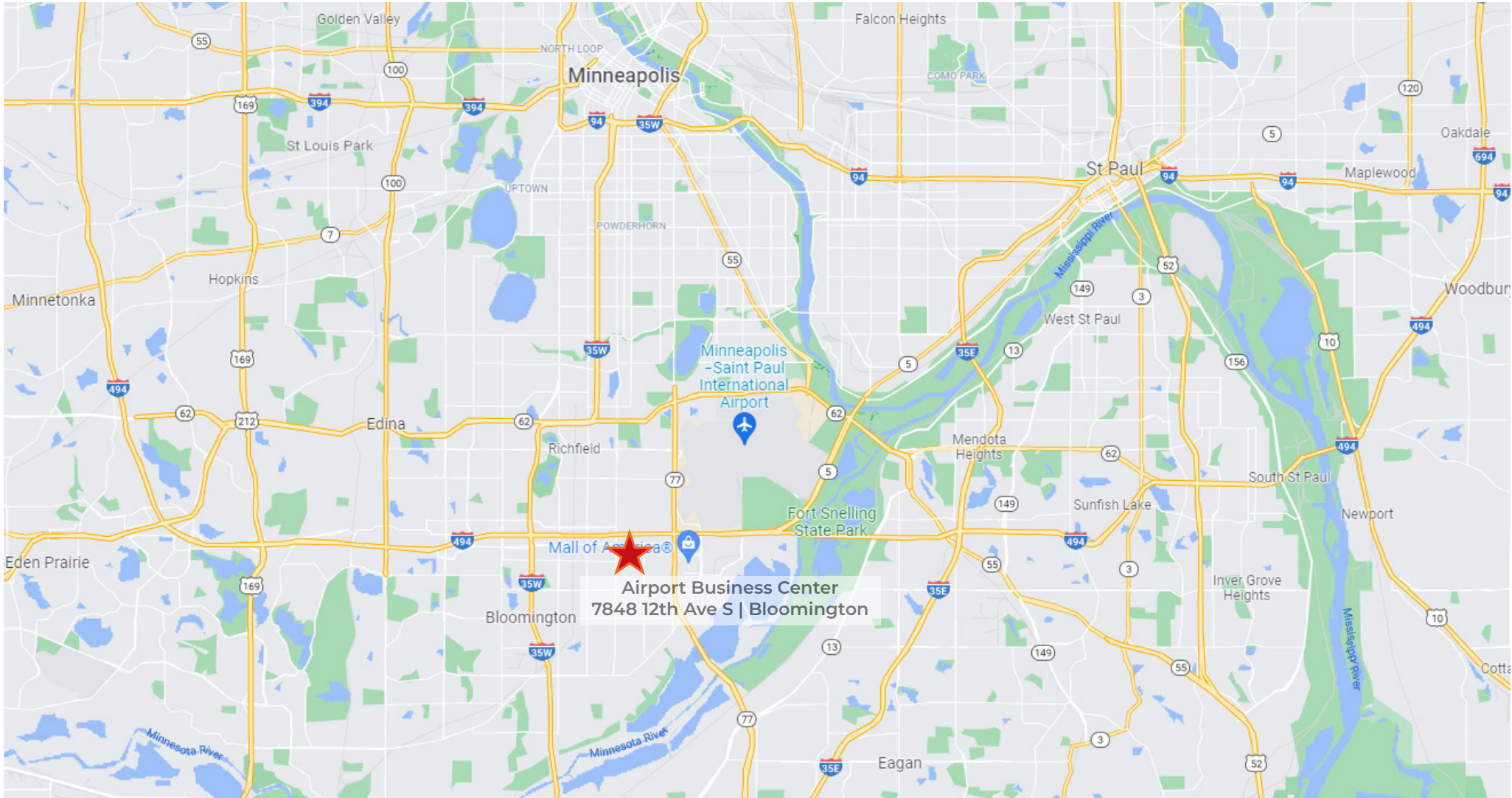
Dan Lofgren
Vice President
(952) 525-3334
Dan.Lofgren@ForteREP.com
www.ForteREP.com

Joe Jetland
Senior Associate
(952) 525-3339
Joe.Jetland@ForteREP.com
www.ForteREP.com



MAP

7848 12th Avenue South, Suite 7846 | Bloomington



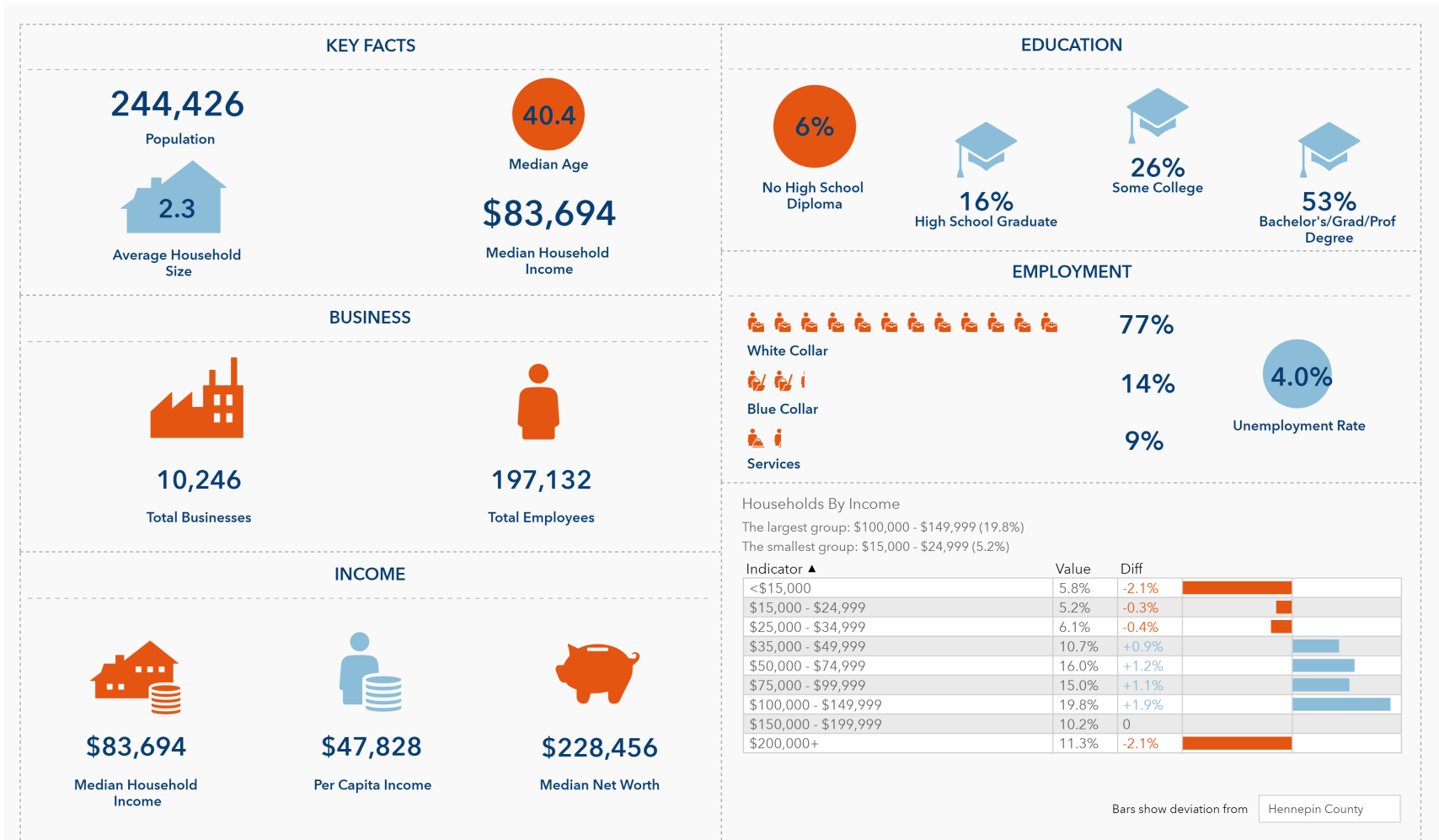
Dan Lofgren
Vice President
(952) 525-3334
Dan.Lofgren@ForteREP.com
www.ForteREP.com

Joe Jetland
Senior Associate
(952) 525-3339
Joe.Jetland@ForteREP.com
www.ForteREP.com



DEMOGRAPHICS

7848 12th Avenue South, Suite 7846 | Bloomington



Data reported within 5 mile radius

Datasource: ESRI

Dan Lofgren
 Vice President
 (952) 525-3334
 Dan.Lofgren@ForteREP.com
 www.ForteREP.com

Joe Jetland
 Senior Associate
 (952) 525-3339
 Joe.Jetland@ForteREP.com
 www.ForteREP.com

