

FOR LEASE

CARWOOD CENTER

4132-4226 WOODRUFF AVE LAKEWOOD, CA 90713

CORELAND
COMPANIES



1,251 SF - 3,573 SF Retail Space Available

PROPERTY DESCRIPTION

Retail spaces available at 106,721 SF Vons anchored shopping center. Excellent location among neighboring communities of Lakewood and Long Beach, and adjacent from complimentary retailers including Sprouts, Marshalls and Home Goods. Ideal for local services and medical uses.

PROPERTY HIGHLIGHTS

- Join Vons, Chronic Tacos, Wingstop, Subway, Salon Centric, SuperCuts, Waba Grill and more
- Close proximity to the 605 Freeway and the 405 Freeway
- Pylon Signage available

SPACES

SPACE SIZE

Suite 4164	1,797 SF
Suite 4170	1,776 SF
Suite 4192 (Divisible)	2,502 SF

DEMOGRAPHICS

1 MILE

3 MILES

5 MILES

Total Households	8,594	62,060	224,307
Total Population	24,222	184,411	648,174
Average HH Income	\$159,206	\$138,152	\$122,003

The information contained herein has been obtained from sources we deem reliable, however no warranty or representation is made to the accuracy of the information. Terms of lease or availability are subject to change or withdrawal without notice.

MATT HAMMOND
714.210.6711
mhammond@coreland.com
LIC #01235239

CHRIS PREMAC
714.210.6705
cpremac@coreland.com
LIC #01966099

ALISSA DRYER
714.210.6726
adryer@coreland.com
LIC #02248097

FOR LEASE

CARWOOD CENTER

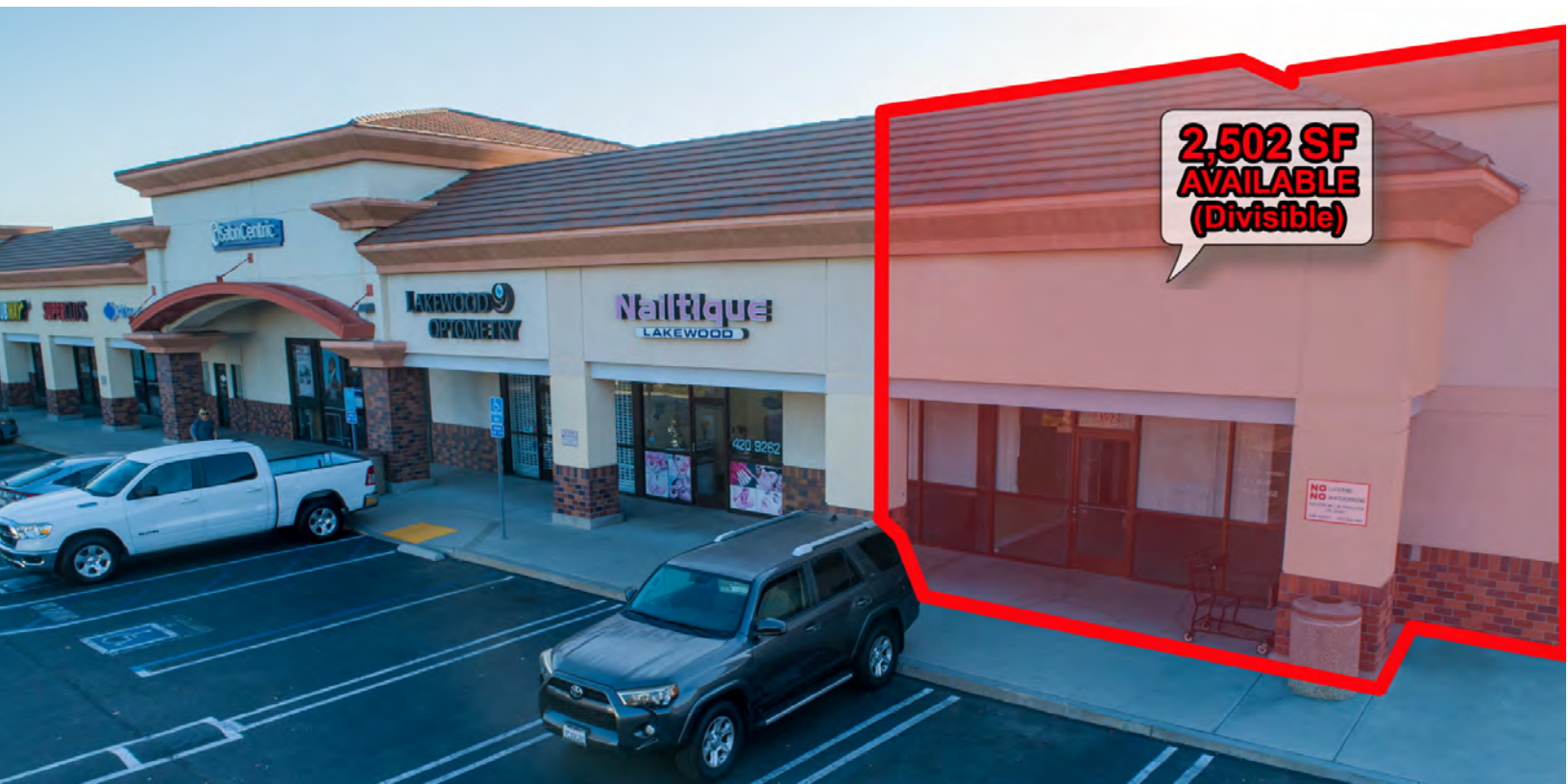
4132-4226 WOODRUFF AVE LAKEWOOD, CA 90713



FOR LEASE

CARWOOD CENTER

4132-4226 WOODRUFF AVE LAKEWOOD, CA 90713



CORELAND
COMPANIES

MATT HAMMOND
714.210.6711
mhammond@coreland.com
LIC #01235239

CHRIS PREMACK
714.210.6705
cpremack@coreland.com
LIC #01966099

ALISSA DRYER
714.210.6726
adryer@coreland.com
LIC #02248097

