



RE MID Group



112 TROUTMAN ST,
BROOKLYN, NY 11206

FLAGSHIP WAREHOUSE SPACE



PRIME BUSHWICK

112 TROUTMAN ST, BROOKLYN, NY 11206

Large Warehouse for Raw Commercial Use in Prime Bushwick

This expansive warehouse offers seven subdivided rooms, making it ideal for a variety of raw commercial uses. The property is attractively priced and conveniently located near major train stations and transportation options. With over 25 feet of exposed frontage, the space is exceptionally wide, offering ample visibility and accessibility for any business.



KEY FEATURES:

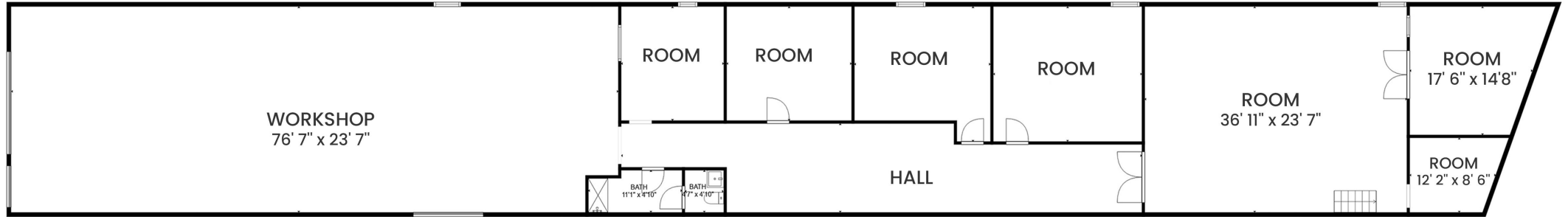
- ✓ **Over 25' of exposed frontage**
- ✓ **5,000 SF**
- ✓ **Roll-up gate**
- ✓ **Ideal for all warehouse and industrial uses**
- ✓ **Central Bushwick**



112 TROUTMAN ST, BROOKLYN, NY 11206



112 TROUTMAN ST, BROOKLYN, NY 11206



SIZES AND DIMENSIONS ARE APPROXIMATE, ACTUAL MAY VARY.

25'
FRONTAGE

10'
CEILING HEIGHT

5,000
SQFT

POSSESSION:
IMMEDIATE

TERM:
NEGOTIABLE

ASKING
\$13,995

112 TROUTMAN ST, BROOKLYN, NY 11206



- 1 Maria Hernandez Park
- 2 Central Ave train
- 3 Myrtle Ave train
- 4 Hart Bar
- 5 Ornithology Jazz Bar
- 6 Sunrise/Sunset



Central Avenue



FOR LEASING INFORMATION PLEASE CONTACT:



Richard W. Wong
Licensed Associate Broker
Oxford Property Group
(212) 300-6412 ext.222
richardwong@opgny.com

