



FOR SUBLEASE

62,400 – 124,800 SF AVAILABLE

Main Gate Logistics Center

Key Features

- **62,400 sf – 124,800 sf available** in 221,215 sf single-load building
- ±2,500 sf office
- 32' clear height
- 204' building depth with 180' truck court
- Class A, tilt-wall construction

Location Highlights

- 7.4 miles to GA Ports Authority Garden City Terminal
- Excellent access to Interstates 16 and Dean Forest Road
- Multiple direct access routes to the GA Ports Authority



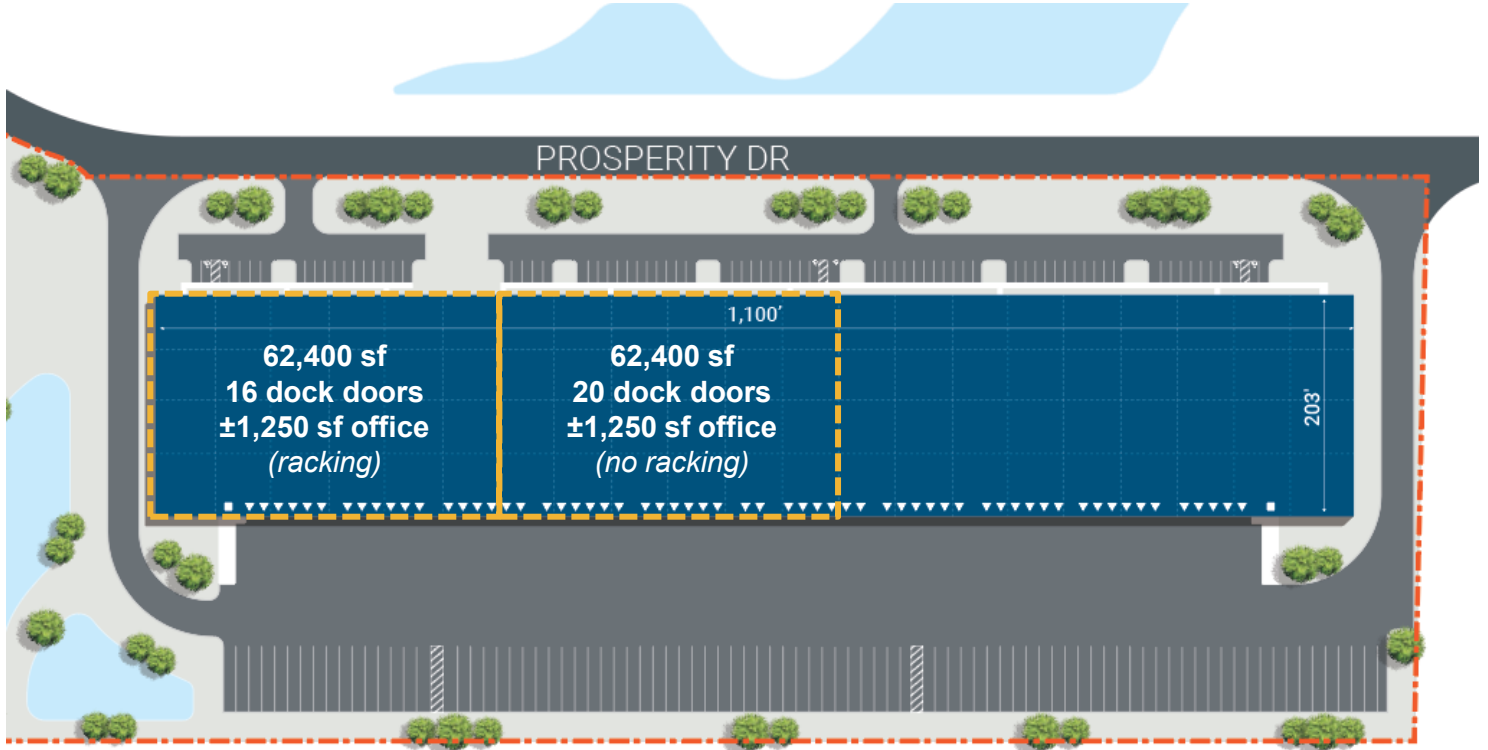
**Stephen Ezelle, SIOR
Partner**

+1 912 441 3083
sezelle@gilbertezelle.com

**820 Abercorn Street
Savannah, GA 31401**

+1 912 236 8992
gilbertezelle.com

cushmanwakefield.com



PROPERTY SPECS

Total Space	221,215 SF	Trailer Parking	47 spaces
Office SF	±2,500 SF	Column Spacing	52'
Dock Doors	36	Sprinklers	ESFR
Drive-in Doors	1	Lighting	LED
Clear Height	32'	Floor Thickness	6" - 4,000 psi

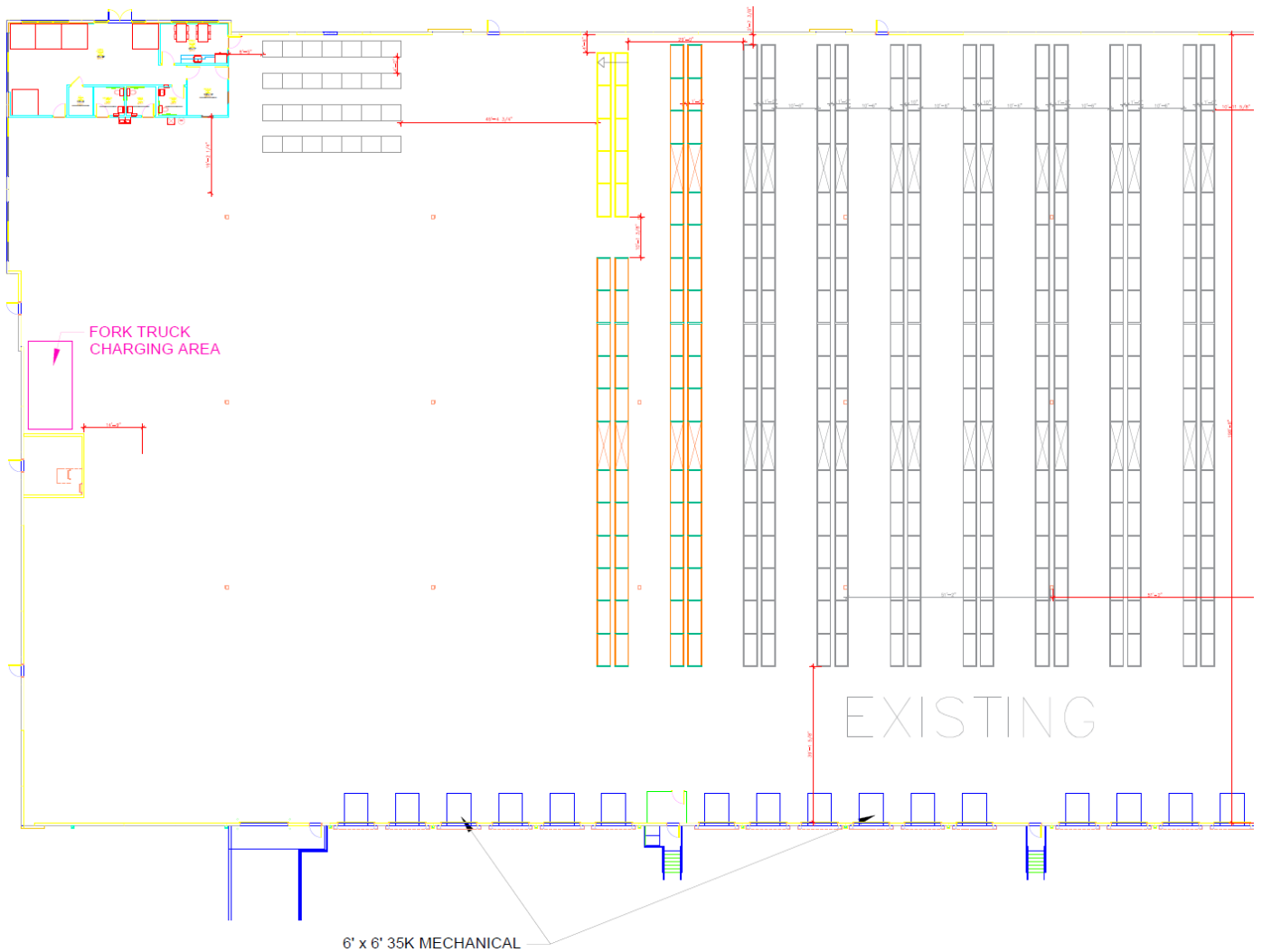
FOR MORE INFORMATION

Stephen Ezelle, SIOR
Partner
+1 912 441 3083
sezelle@gilbertezelle.com

820 Abercorn Street
Savannah, GA 31401
+1 912 236 8992

gilbertezelle.com

RACKING PLAN

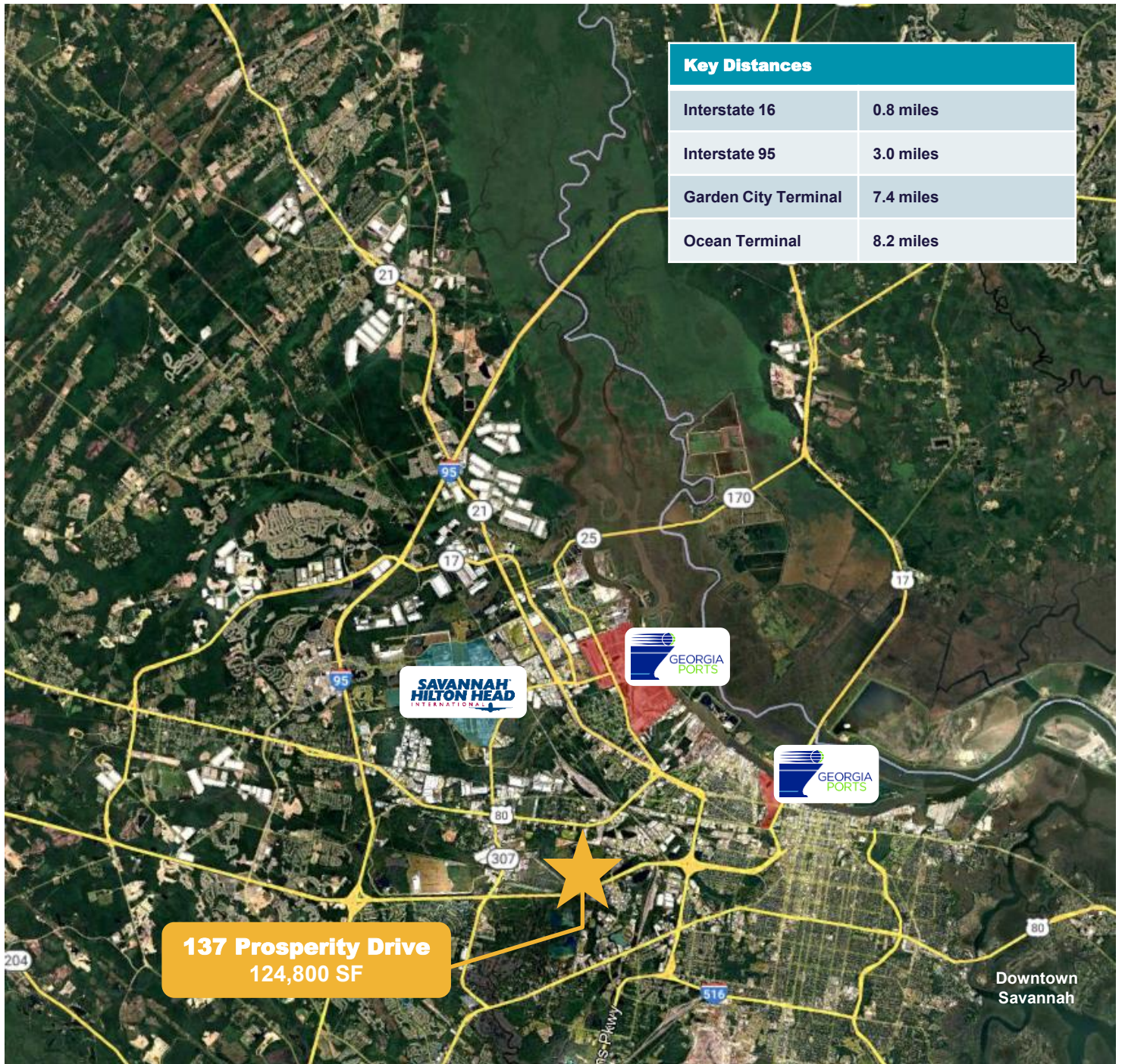


FOR MORE INFORMATION

Stephen Ezelle, SIOR
Partner
+1 912 441 3083
sezelle@gilbertezelle.com

820 Abercorn Street
Savannah, GA 31401
+1 912 236 8992

gilbertezelle.com



FOR MORE INFORMATION

Stephen Ezelle, SIOR
Partner
+1 912 441 3083
sezelle@gilbertezelle.com

820 Abercorn Street
Savannah, GA 31401
+1 912 236 8992

gilbertezelle.com