

FOR SALE – 3.05 ACRES
913 TOWER ROAD | MUNDELEIN, IL – LAKE COUNTY

**3.05 ACRES AVAILABLE
FOR SALE**

PROPERTY SPECIFICATIONS:

- › Zoned M-1
- › Low Lake County taxes
- › 5.8 miles to I-94 full interchange
- › Utilities to site
- › PIN: 11-31-202-037
- › Located in an established industrial park
- › Sale Price: \$850,000

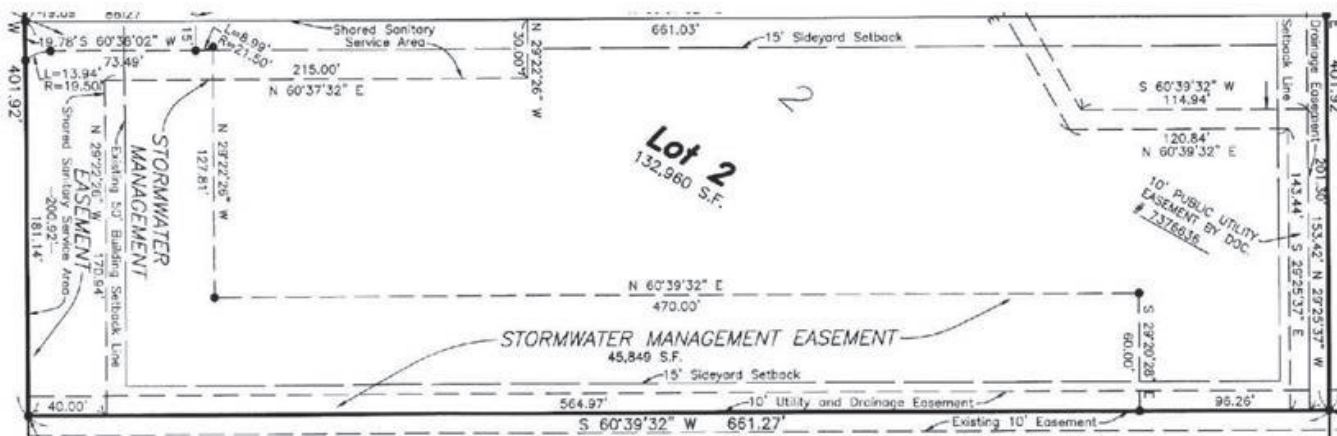
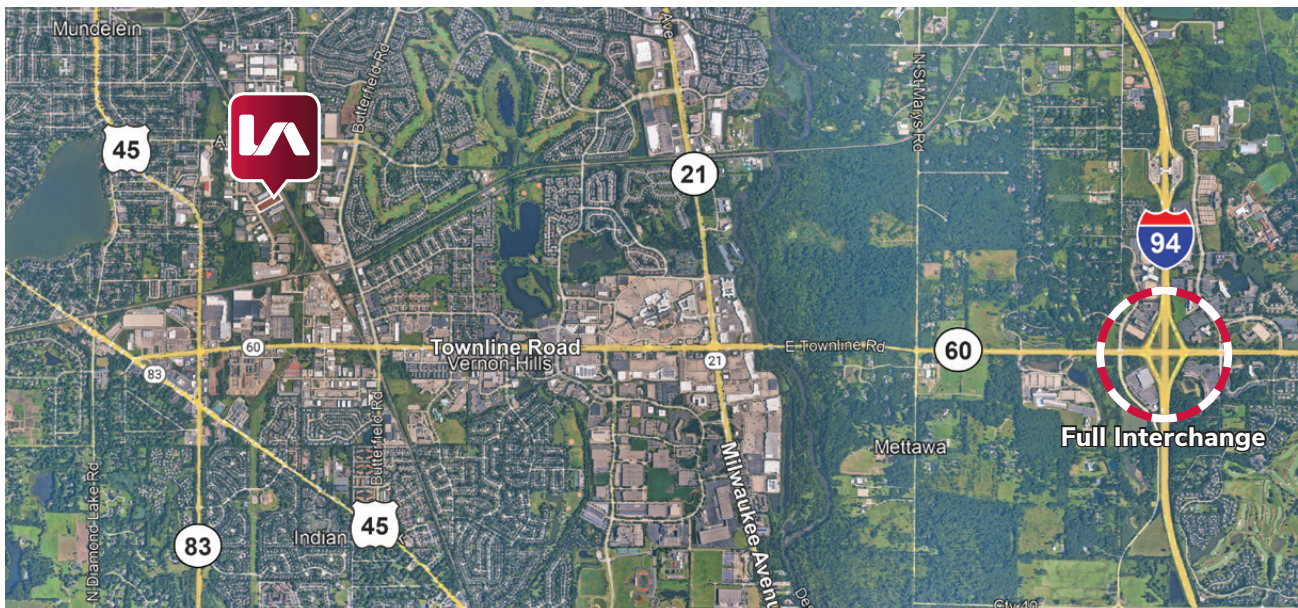


Rick Anesi
Senior Vice President
ranesi@lee-associates.com
D 773.355.3043

Dylan Maher
Senior Vice President
dmaher@lee-associates.com
D 773.355.3033

All information furnished regarding property for sale, rental or financing is from sources deemed reliable, but no warranty or representation is made to the accuracy thereof and same is submitted to errors, omissions, change of price, rental or other conditions prior to sale, lease or financing or withdrawal without notice. No liability of any kind is to be imposed on the broker herein.

FOR SALE – 3.05 ACRES
 913 TOWER ROAD | MUNDELEIN, IL – LAKE COUNTY



Conceptual site plan available upon request.

Rick Anesi
 Senior Vice President
 ranesi@lee-associates.com
 D 773.355.3043

Dylan Maher
 Senior Vice President
 dmaher@lee-associates.com
 D 773.355.3033

All information furnished regarding property for sale, rental or financing is from sources deemed reliable, but no warranty or representation is made to the accuracy thereof and same is submitted to errors, omissions, change of price, rental or other conditions prior to sale, lease or financing or withdrawal without notice. No liability of any kind is to be imposed on the broker herein.