

# 807 Washington Street

## Prime Meatpacking District Retail Sublease Opportunity



### Features

- 1,500sf private garden
- Open layout (no obstructions)
- Expansive ground level skylight
- Finished lower level
- Between Horatio Street & Gansevoort Street



**Mitchell Dearman**  
646-457-4457  
MITCHELL@MCDRETAIL.COM



# 807 Washington Street

## Adjacencies

- Bang & Olufsen
- Christian Louboutin
- Golden Goose
- Hermès
- Moorer
- Saint Laurent
- Zegna

## Neighborhood

- High Line
- RH NY & Rooftop
- Samsung
- The Standard Hotel
- Whitney Museum



ZEGNA



**Mitchell Dearman**  
646-457-4457  
MITCHELL@MCDRETAIL.COM



# 807 Washington Street

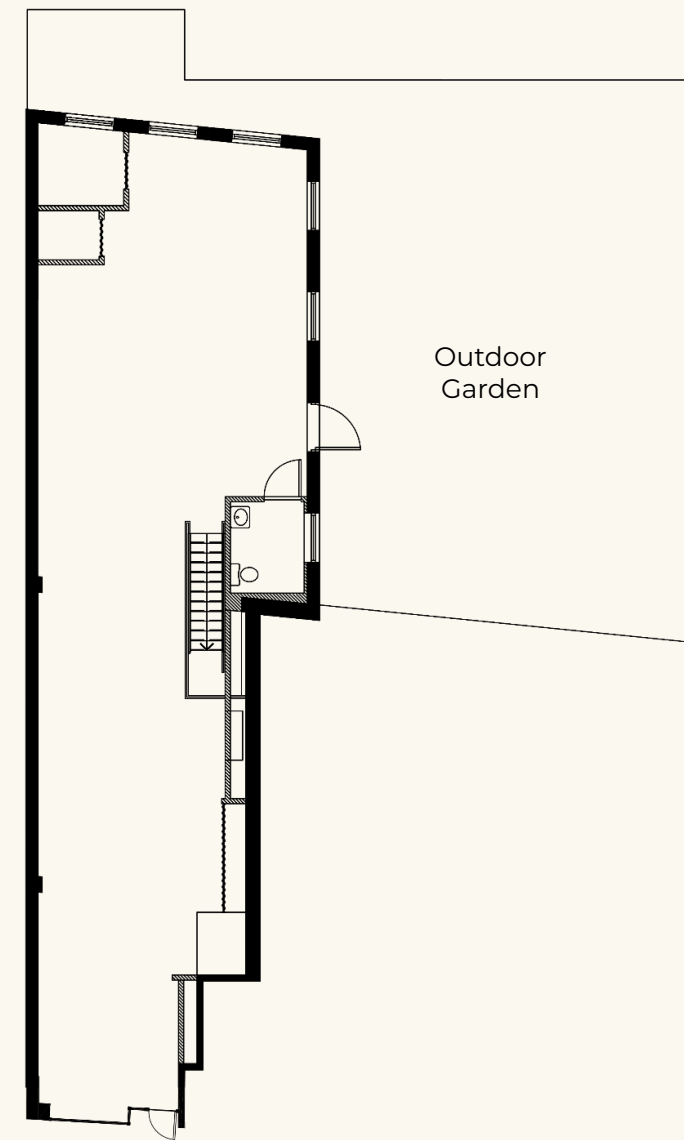
## Space

- Frontage: 13 ft
- Ground Level: 1,562 sf
- Lower Level: 578 sf
- Outdoor Garden: 1,522 sf

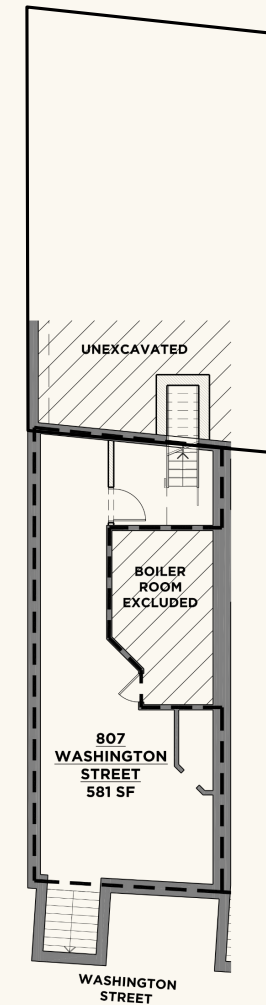
## Features

10ft ceilings + large circular skylight + clean white brick interior + painted concrete floors on ground level + updated lighting throughout + move-in ready

## Floor Plans



Ground Level



Lower Level



**Mitchell Dearman**  
646-457-4457  
MITCHELL@MCDRETAIL.COM

# 807 Washington Street

## Prime Meatpacking District Retail Sublease Opportunity

### Conditions

- Possession to be arranged
- Term: Sublease through March 31, 2029
- Long-term direct deal possible - please inquire

### MCD Retail

mcdretail.com  
110 Greene Street  
Suite 1108  
New York, New York 10012



**Mitchell Dearman**  
646-457-4457  
MITCHELL@MCDRETAIL.COM