



# Office Sublease

1315 S HOWARD AVE TAMPA, FL 33606



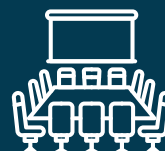
## PROPERTY DESCRIPTION

- 2nd floor [no elevator]
- Office/Medical Zoning with signage on S Howard
- 1,050 SF
- \$50 SF Modified Gross. Subtenant pays own electric, janitorial and phone/internet.
- 3% annual increases on October 1<sup>st</sup> each year
- Sublease term through September 30, 2028.
- 3 onsite parking spaces

## PROPERTY HIGHLIGHTS



3 OFFICES



CONFERENCE/  
OPEN AREA



KITCHEN

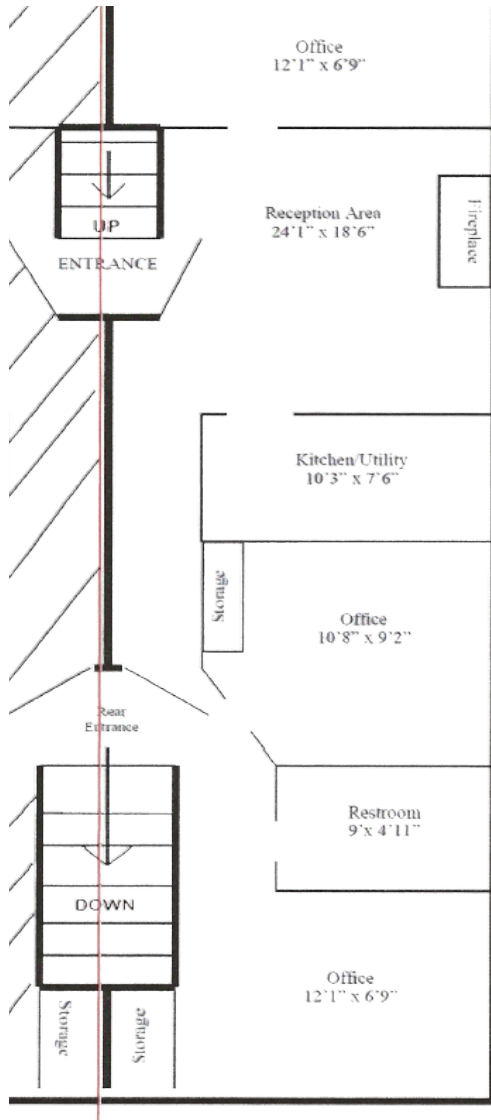


813-289-3700

Chelsea Drinkard, Broker Associate  
CD@OfficeSpaceBrokers.com

# Office Sublease

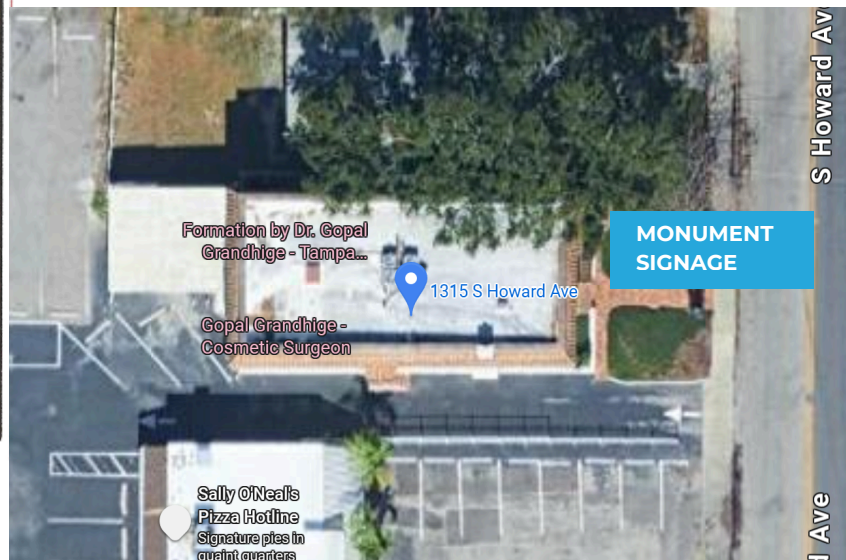
1315 S HOWARD AVE TAMPA, FL 33606



## FLOOR PLAN

- MAIN ENTRY FROM S HOWARD
- 3 OFFICES
- OPEN AREA (COULD BE USED AS CONFERENCE SPACE)
- KITCHEN
- PRIVATE RESTROOM
- BACK ENTRY/EXIT FROM PARKING LOT

[CLICK HERE FOR VIDEO TOUR](#)



9 MIN FROM  
DOWNTOWN





12 MIN FROM  
WESTSHORE



25 MIN FROM  
ST PETE

CONTACT FOR MORE INFO.

 813-289-3700

 Chelsea Drinkard, Broker Associate  
CD@OfficeSpaceBrokers.com