

# TALLGRASS OFFICE BUILDING FOR LEASE

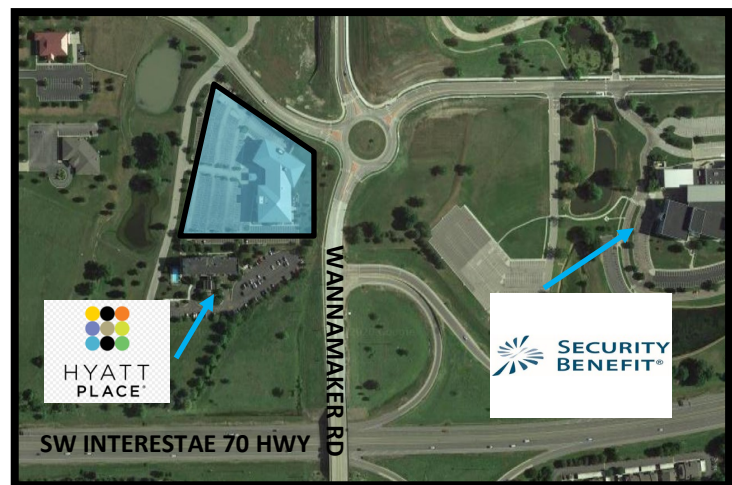
6001 SW 6th Street, Topeka, KS 66615



SPACE AVAILABLE 1,999 - 7,038 SF  
RATE: \$24.00/SF/YR/ GROSS FULL SERVICE

## Features

- Suite 310 1,994 SF available
- Suite 320 7,038 SF available
- Suite 330 4,650 SF available
- Great West Topeka Office Location
- Class A office space with stunning views
- Quick access to Interstate 70



Randy Goldsmith | 785.221.1122 | [Randy.Goldsmith@k1realtyllc.com](mailto:Randy.Goldsmith@k1realtyllc.com)

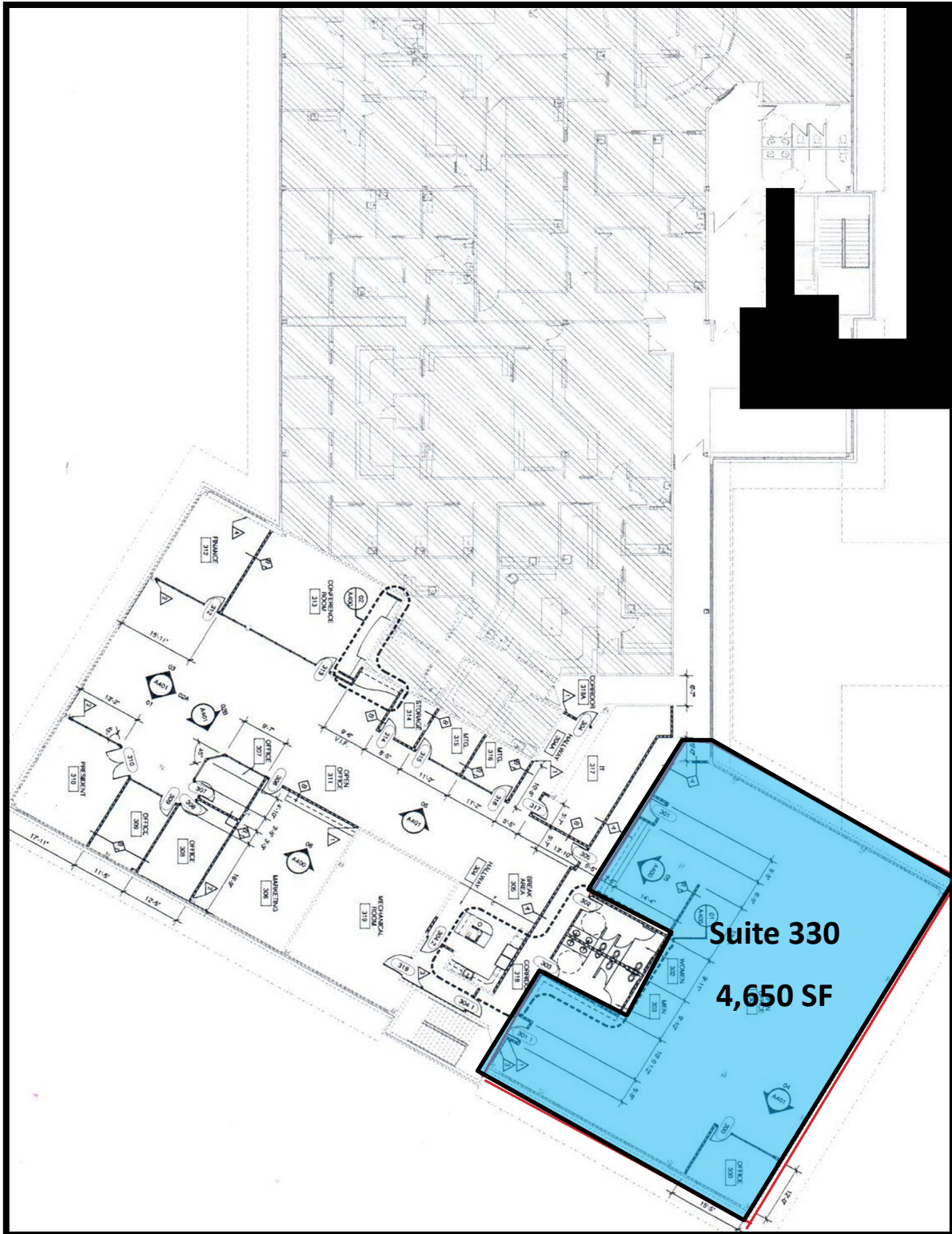
VALUE ADDED COMMERCIAL REAL ESTATE SERVICES SINCE 1988

The information contained herein has been obtained from sources believed reliable. While K1 Realty llc does not doubt its accuracy, some of the information may need to be verified. K1 Realty llc makes no guarantee and warranty with regard to the property or this information.



# TALLGRASS OFFICE BUILDING FOR LEASE

6001 SW 6th Street, Topeka, KS 66615



Randy Goldsmith | 785.221.1122 | [Randy.Goldsmith@k1realtyllc.com](mailto:Randy.Goldsmith@k1realtyllc.com)

VALUE ADDED COMMERCIAL REAL ESTATE SERVICES SINCE 1988

The information contained herein has been obtained from sources believed reliable. While K1 Realty llc does not doubt its accuracy, some of the information may need to be verified. K1 Realty llc makes no guarantee and warranty with regard to the property or this information.

