

# For Lease



OFFICE SPACE IN CENTRAL  
BUSINESS DISTRICT

333 N Orange Ave | Orlando  
32801 | Suite 201

---

Bishop Wood Partners

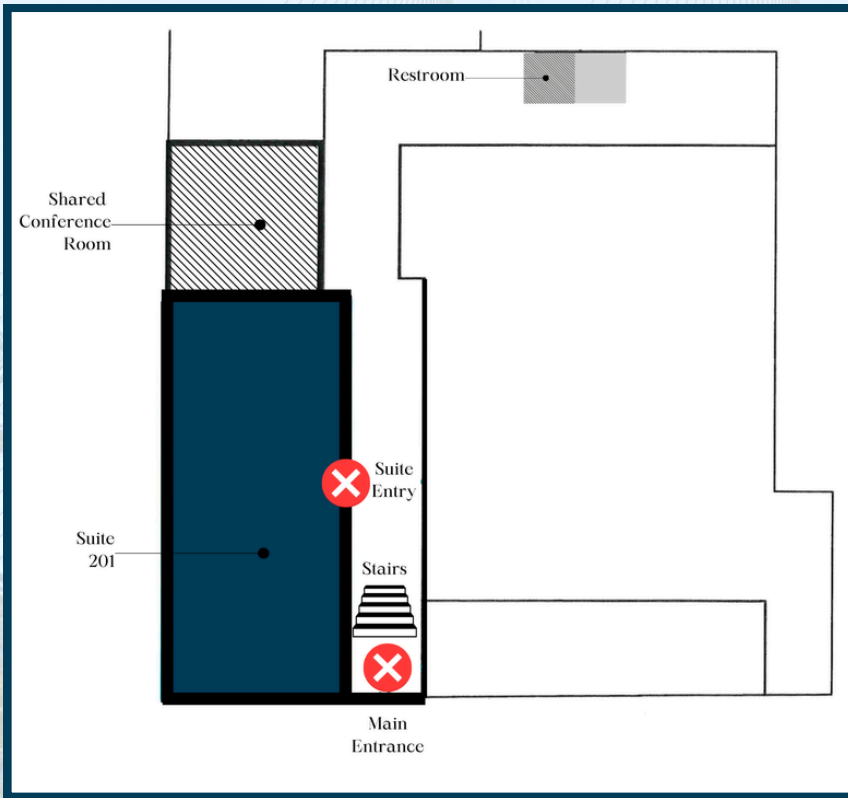
*OFFICE SPACE | +/-1,500 SF  
LEASE RATE: \$24.50/SF MG*



## 333 N Orange Ave | Orlando 32801 | Suite 201

- Office Space located in the heart of Orlando's CBD on Orange Avenue
- 3 Interior Offices, 2 Workspace Sections, Conference Room plus additional Building Shared Conference Room
- Parking: 4 Spaces
- Lease Rate: \$24.50/SF Modified Gross
- Zoning: AC-3A/T
- Lease Term: 3 Years

# FLOOR PLAN



Located .2 Miles from  
Orange County  
Courthouse and .6 Miles  
from US Middle District  
Court



# DEMOGRAPHICS & Statistics



**105,222**  
POPULATION



**\$100,829**  
AVG HSHD  
INCOME



**\$403,659**  
MEDIAN  
HOME VALUE

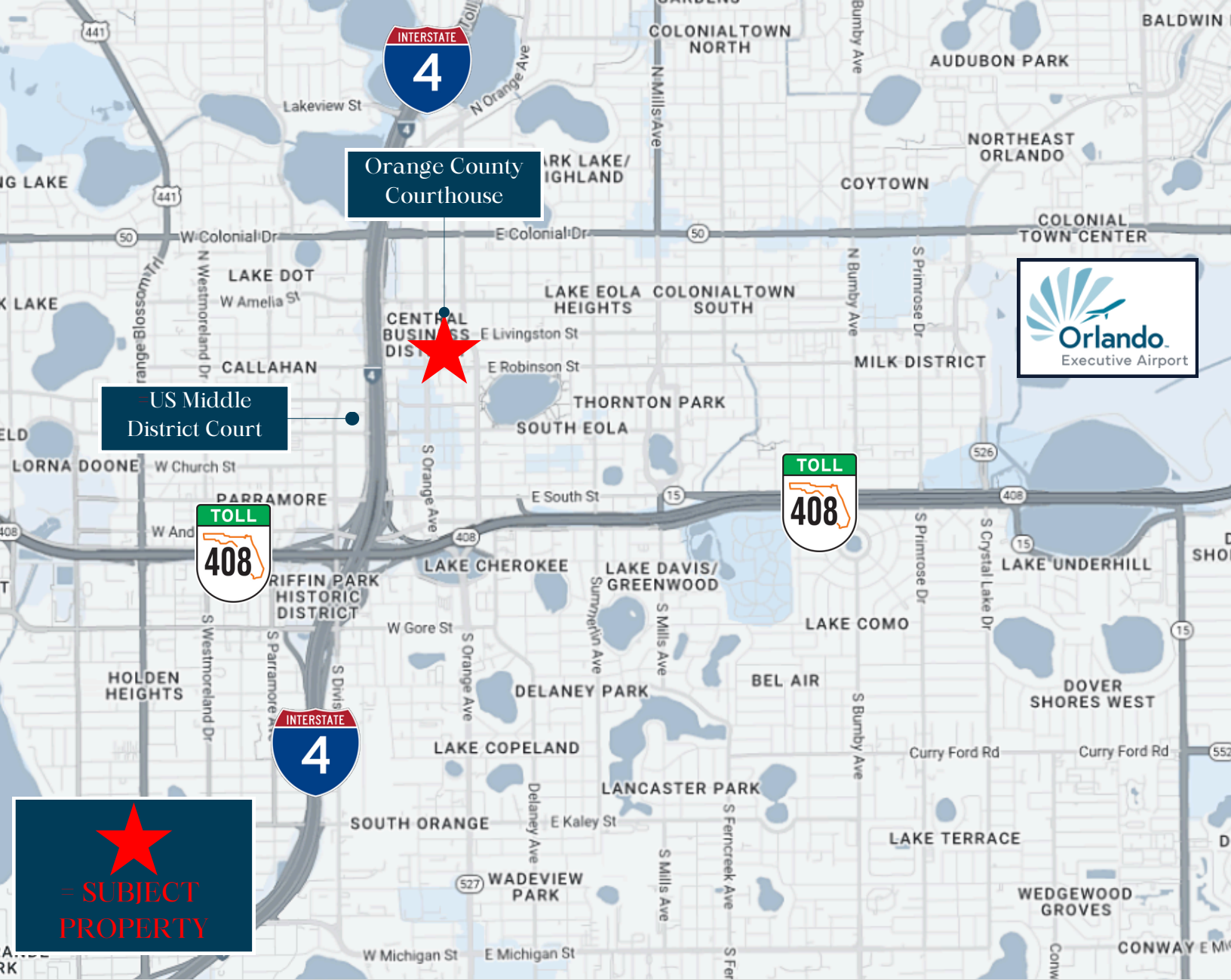


**39.9**  
MEDIAN  
AGE



**44%**  
BACHELOR'S  
DEGREE





Orange County  
Courthouse



US Middle  
District Court



  
= SUBJECT  
PROPERTY

# For Next Steps:

Colton Bishop  
Associate  
[Colton@BishopWoodPartners.com](mailto:Colton@BishopWoodPartners.com)  
Mobile: 407.404.0175



Although information has been obtained from sources deemed reliable, neither Owner nor Bishop Wood Partners, LLC makes any guarantees, warranties or representations, express or implied, as to the completeness or accuracy as to the information contained herein. Any projections, opinions, assumptions or estimates used are for example only. There may be differences between projected and actual results, and those differences may be material. The Property may be withdrawn without notice. Neither Owner nor Bishop Wood Partners, LLC accepts any liability for any loss or damage suffered by any party resulting from reliance on this information. If the recipient of this information has signed a confidentiality agreement regarding this matter, this information is subject to the terms of that agreement. ©2024 Bishop Wood Partners, LLC. All rights reserved.