



For lease Freestanding Building

1411 Industrial Rd, San Carlos, CA 94070

±29,811 SF Available

1411 Industrial Road

Ideal for Hardware Tech, Med Device , Auto Tech, or Robotics

- High Power available: 1,200 AMPS, 3 Phase
- High voltage upgrade available on site
- 20' clear height
- 1.5/1,000SF on-site parking
- Large open R&D
- Polished concrete floors
- Updated lighting fixtures
- 5 large roll-up doors
- Skylights throughout
- Multiple restrooms
- Enclosed hardware tech testing area with benching
- Open office with collaboration area
- Sprinkled
- Secured yard
- Close proximity to restaurants and shopping



Size
29,811 SF



Availability
Now



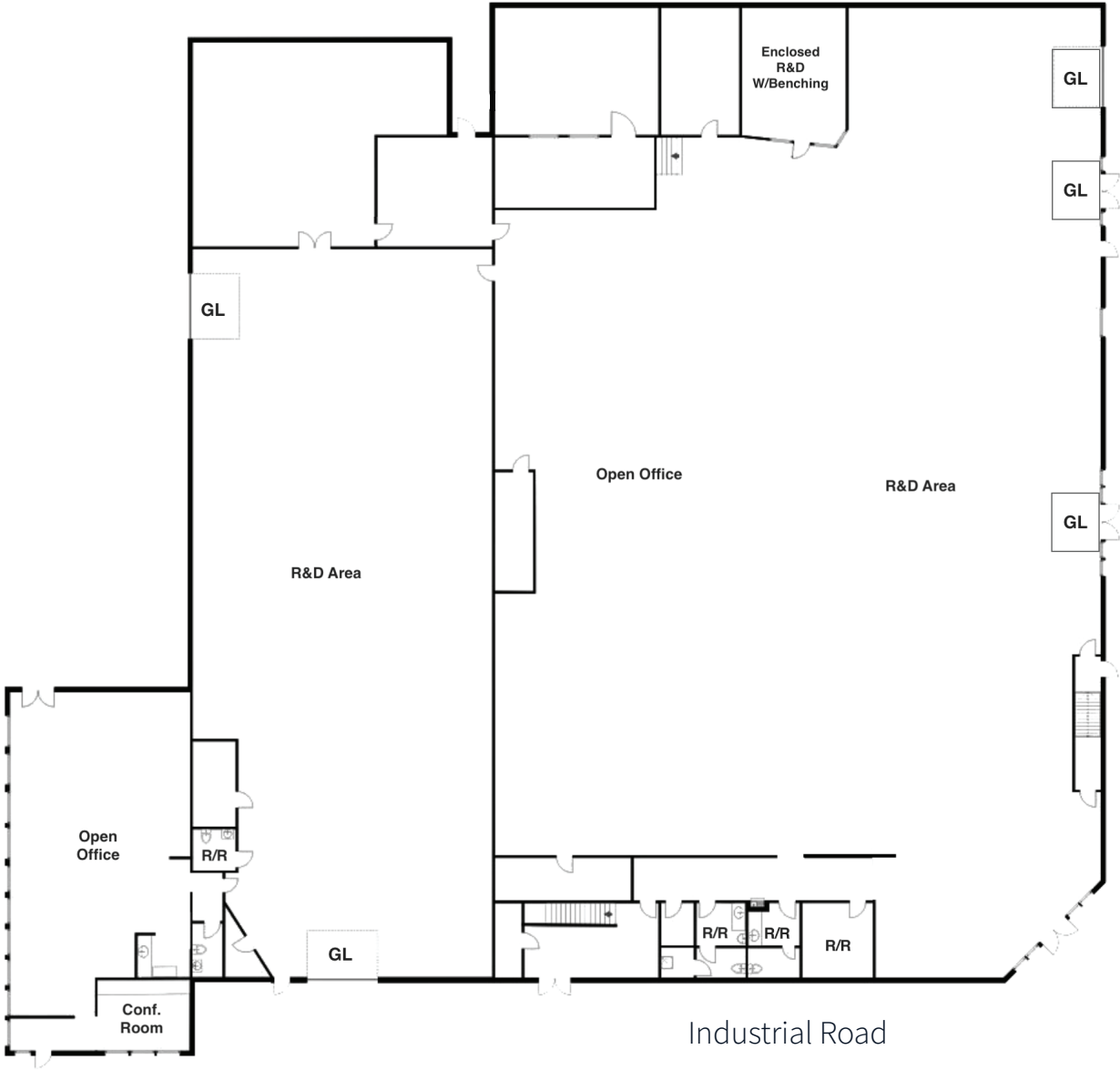
Term
Flexible



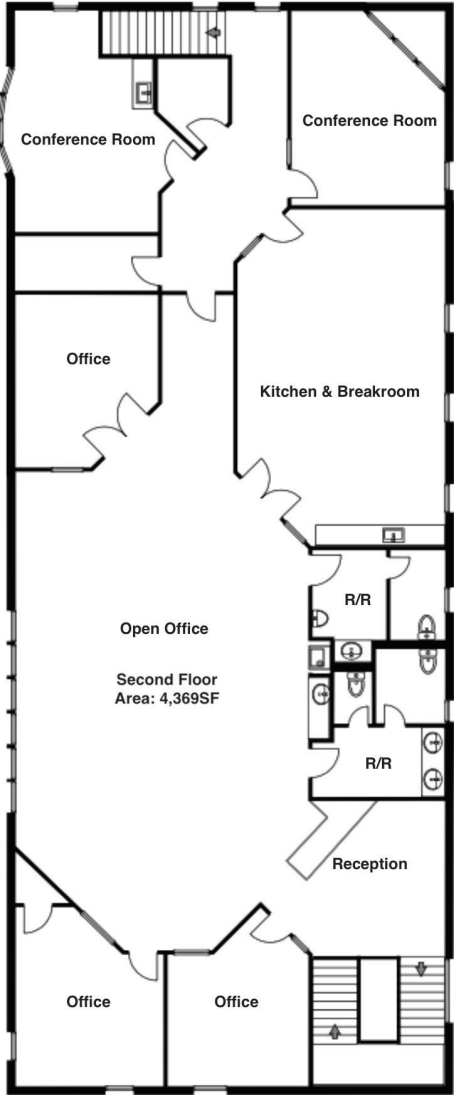
Rate
\$3.50 NNN

Floor plans

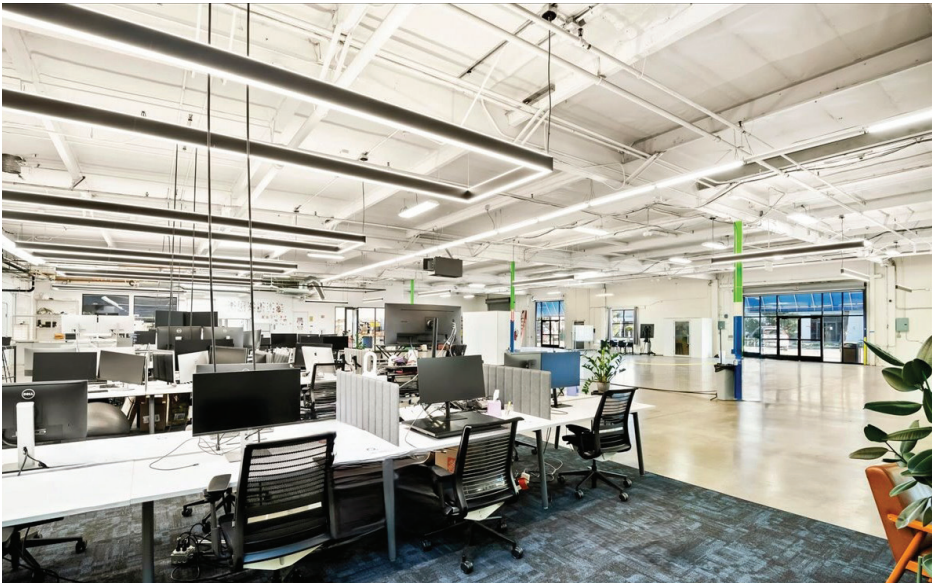
Ground floor
25,442 SF



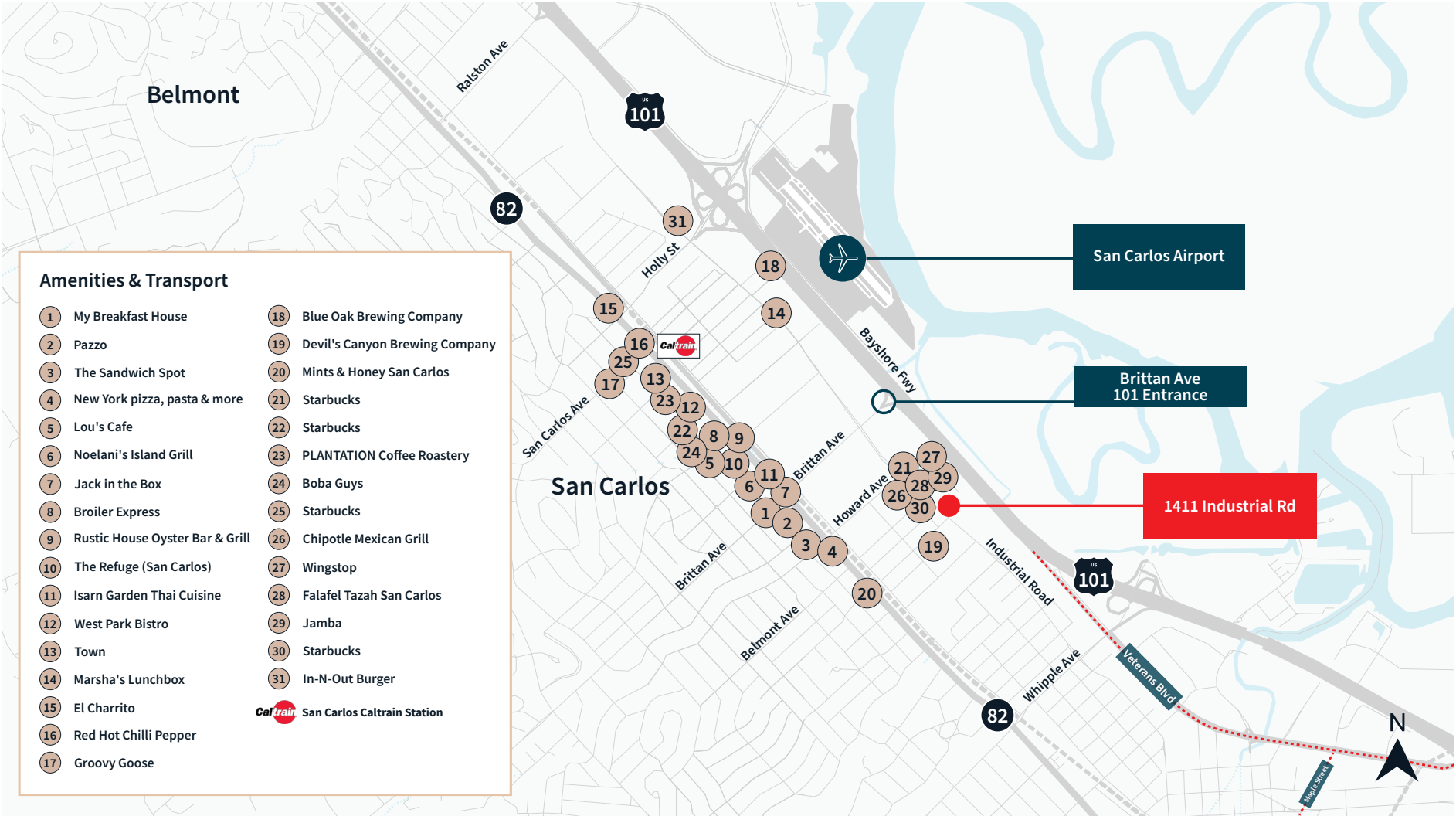
Second floor
4,369 SF







Surrounding area





JLL

Joey Alftin

Lic. 02086817

joey.alftin@jll.com

650-520-0324

Jon Moeller

Lic. 01227897

jon.moeller@jll.com

415-516-2019

Beto Santana

Lic. 02222480

beto.santana@jll.com

385-250-7852



WP INVESTMENTS

Owner/Manager
2101 Woodside Road
Woodside, CA 94062
650-568-7300

www.wpinvestments.com

Although information has been obtained from sources deemed reliable, neither Owner nor JLL makes any guarantees, warranties or representations, express or implied, as to the completeness or accuracy as to the information contained herein. Any projections, opinions, assumptions or estimates used are for example only. There may be differences between projected and actual results, and those differences may be material. The Property may be withdrawn without notice. Neither Owner nor JLL accepts any liability for any loss or damage suffered by any party resulting from reliance on this information. If the recipient of this information has signed a confidentiality agreement regarding this matter, this information is subject to the terms of that agreement.

© 2025. Jones Lang LaSalle IP, Inc. All rights reserved