

4600

140th AVE N SUITE 170

MERIDIAN CONCOURSE CENTER

 **Noveome**
BIOTHERAPEUTICS

For Lease
4,869 SF

// CONTACTS

JT Faircloth, SIOR

Director

813 833 3242

JT.Faircloth@cushwake.com

Casey Perry

Senior Associate

813 233 6564

Casey.G.Perry@cushwake.com

 **CUSHMAN &
WAKEFIELD**

// PROPERTY HIGHLIGHTS



3,440 SF WAREHOUSE



1,429 SF OFFICE SPACE



2 LOADING DOCKS

(9' x 10') Dock High Doors



AVAILABLE NOW

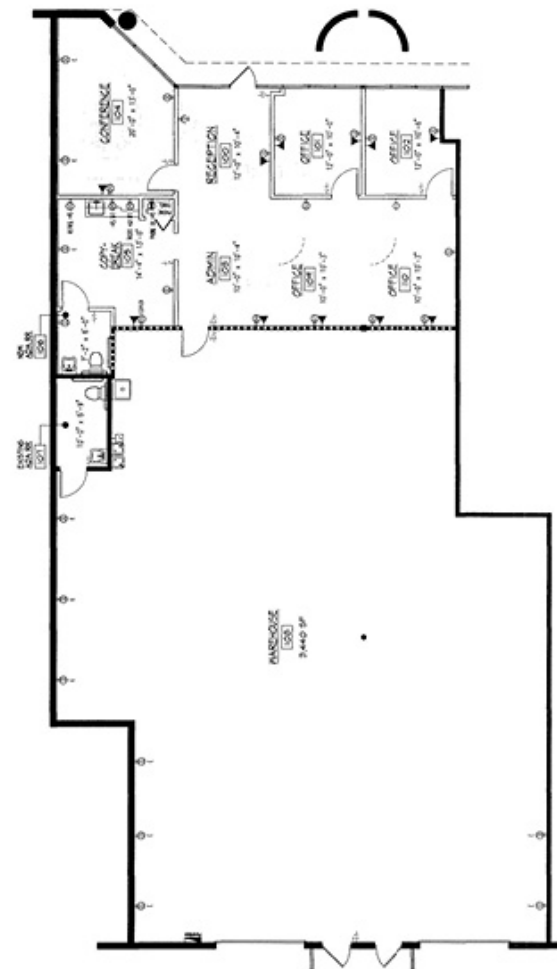


3 PHASE POWER

600 amps minimum and Back-up Generator Included



100% AIR-CONDITIONED



©2025 Cushman & Wakefield. All rights reserved. The information contained in this communication is strictly confidential. This information has been obtained from sources believed to be reliable but has not been verified. NO WARRANTY OR REPRESENTATION, EXPRESS OR IMPLIED, IS MADE AS TO THE CONDITION OF THE PROPERTY (OR PROPERTIES) REFERENCED HEREIN OR AS TO THE ACCURACY OR COMPLETENESS OF THE INFORMATION CONTAINED HEREIN, AND SAME IS SUBMITTED SUBJECT TO ERRORS, OMISSIONS, CHANGE OF PRICE, RENTAL OR OTHER CONDITIONS, WITHDRAWAL WITHOUT NOTICE, AND TO ANY SPECIAL LISTING CONDITIONS IMPOSED BY THE PROPERTY OWNER(S). ANY PROJECTIONS, OPINIONS OR ESTIMATES ARE SUBJECT TO UNCERTAINTY AND DO NOT SIGNIFY CURRENT OR FUTURE PROPERTY PERFORMANCE.

// **MERIDIAN CONCOURSE CENTER**
4600 140th Ave N, Clearwater, FL 33762