

# Brandon Oaks Plaza Brandon, Florida 33511



## Retail/Office Space Available



- Brandon is one of the fastest growing suburban areas in the country and is just minutes from downtown Tampa and South Tampa via the Lee Roy Selmon Crosstown Expressway.
- 1,213 SF and 1,487 SF Available 2/25-3/25.
- Centrally located at 2102 - 2128 West Brandon Blvd. (SR 60) on a signalized corner with Outback Steakhouse, 1/2 mile East of Westfield Brandon Mall and I-75.
- Center has great visibility on State Road 60.
- Parking: 100 spaces (5/1000 SF)
- Traffic Count:
  - SR60 (E/W) - 88,000 VPD
  - I -75 (N/S) - 140,000 VPD

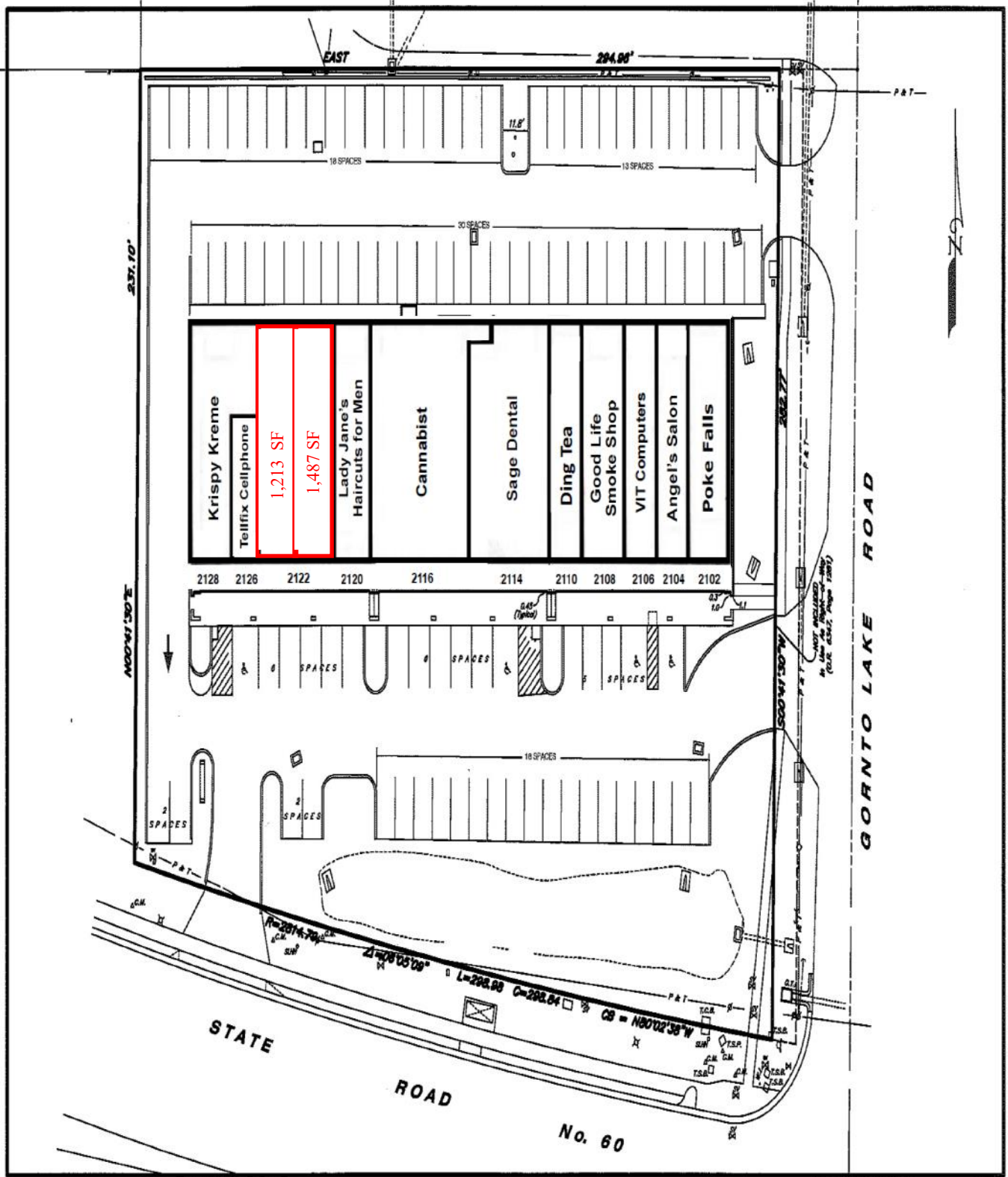


332 South Plant Ave.  
Tampa, FL 33606-2346  
Phone: 813-835-7747  
www.propertypro.com

### 2024 Demographics

	<u>3 Miles</u>	<u>5 Miles</u>	<u>7 Miles</u>
Population	92,641	220,155	330,649
Avg. HH Income	\$71,650	\$73,855	\$75,745
Households	37,070	83,099	122,401
Employment	57,147	104,652	154,329

# Site Plan

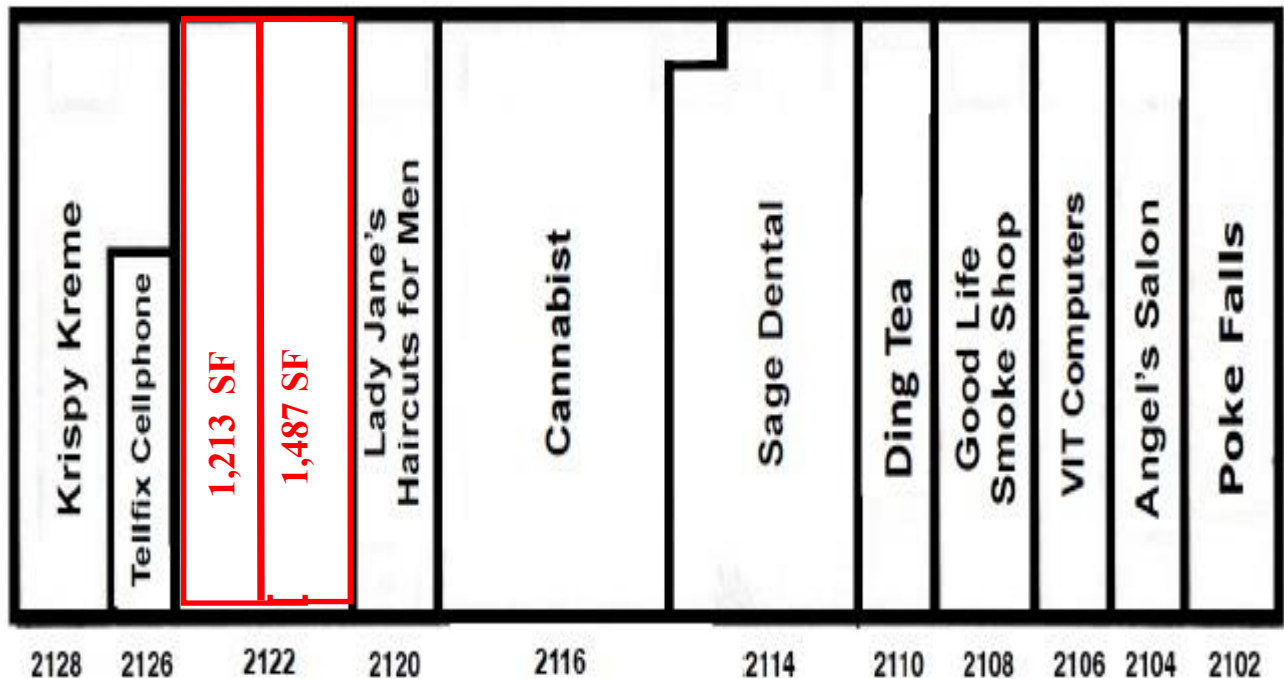


Brandon Oaks Plaza  
 2102-2128 West Brandon Boulevard  
 Brandon, FL 33511

# Site Plan

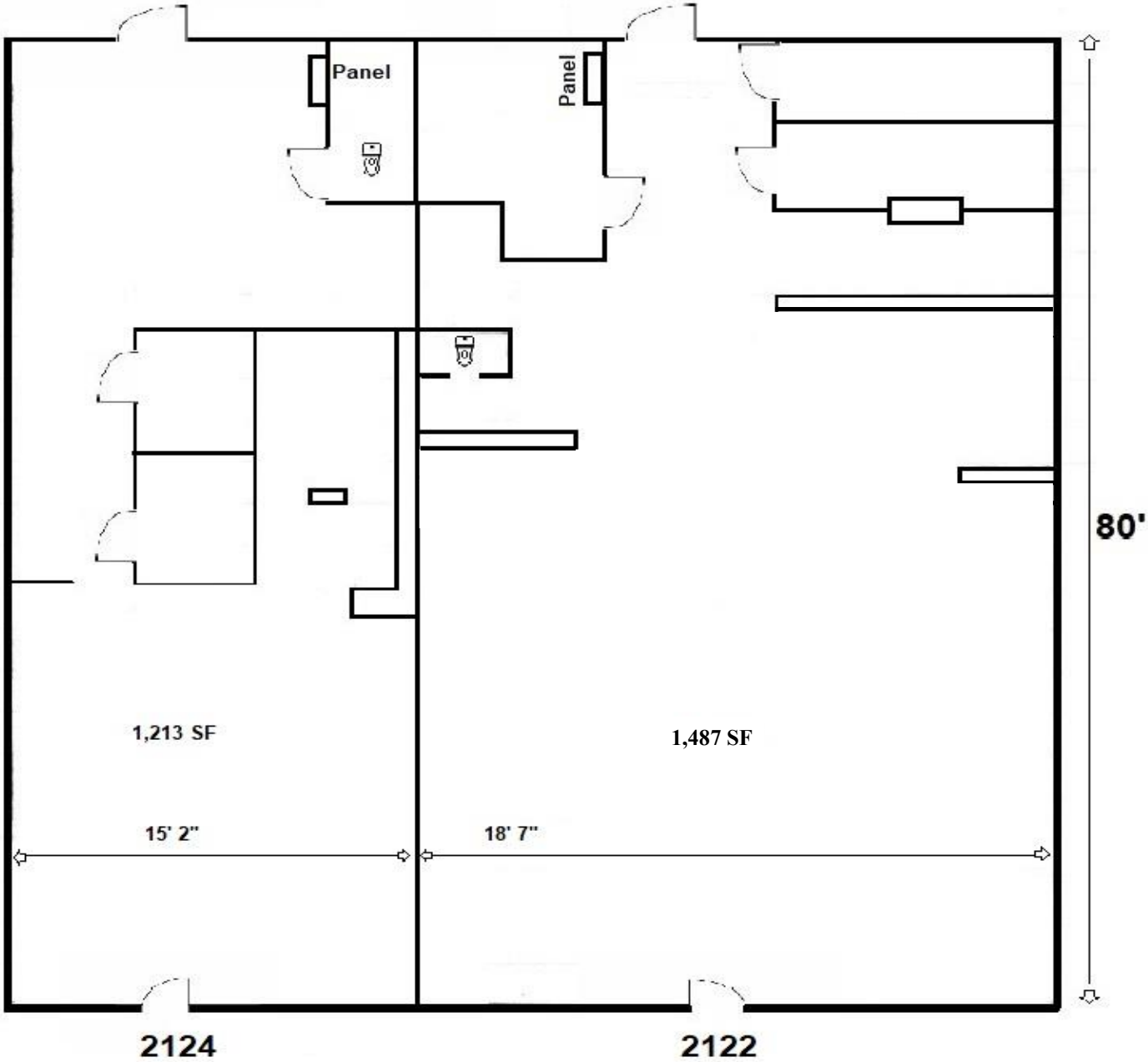
## BRANDON OAKS PLAZA

2102-2128 WEST BRANDON BLVD.  
BRANDON, FLORIDA 33511



Brandon Oaks Plaza  
2102-2128 West Brandon Boulevard  
Brandon, FL 33511

# Floor Plan



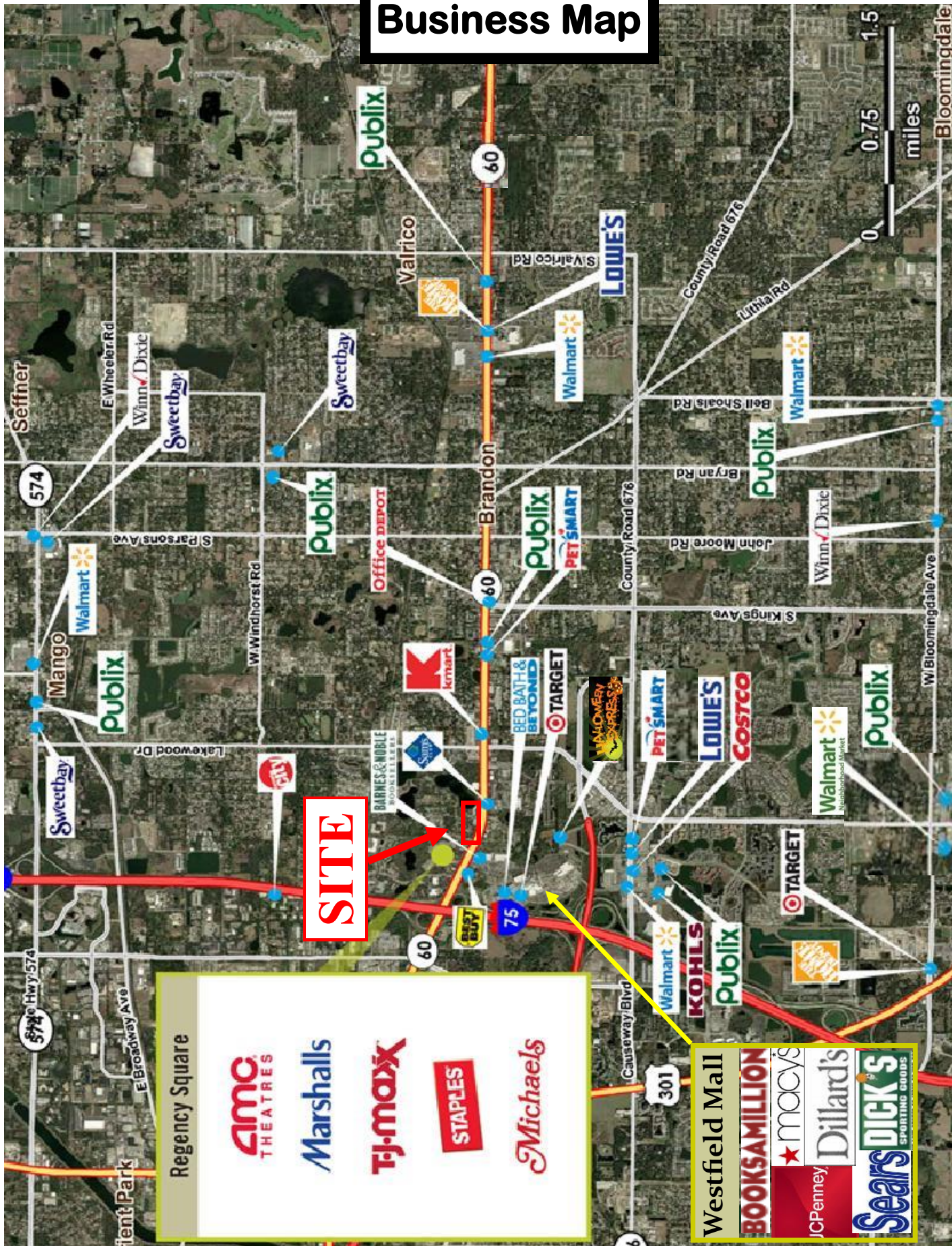
**Brandon Oaks Plaza  
2102-2128 West Brandon Boulevard  
Brandon, FL 33511**

# Monument Sign



Brandon Oaks Plaza  
2102-2128 West Brandon Boulevard  
Brandon, FL 33511

# Business Map



**Brandon Oaks Plaza**  
 2102-2128 West Brandon Boulevard  
 Brandon, FL 33511