



DIRECTORS SCIENCE PARK

ORCHESTRATING LIFE SCIENCES INNOVATION

NEWLY CONSTRUCTED
OFFICE & LAB



VIRTUAL TOUR

GATEWAY
4930 DIRECTORS PLACE
SAN DIEGO | CA | 92121



CBRE

DSP DIRECTORS SCIENCE PARK

GATEWAY
4930 DIRECTORS PLACE
83,944 SQ. FT. AVAILABLE NOW

*Unmatched Signage Visibility
to 180,000+ vehicles daily



Utmost Corporate Security

- Single point of access (gated)
- No contiguous neighbors



DIRECTORS PLACE




Healthpeak® | DOC LISTED NYSE
Owned


VISTA SORRENTO PKWY


ADJACENT TO 162,385
SQ. FT. ON DIRECTORS
PLACE AVAILABLE FOR
LEASE





* Land Site Sits Approximately 150 Feet Higher Than The Freeway


 Total Building Size
±165,627 Square Feet


 Floor Sizes
±30,000 Square Feet


 Total Stories
5


 Power
4000 Amp, 277/480 Volt,
3 Phase, 4 Wire


 Parking
Spaces/Ratio
2.8/1,000 RSF

 Zoning/Site Area
IL-2-1/4.4 net acres

 Backup generator (750kw)
Space/infrastructure for
exterior bulk gas tanks

 Amenities
On site cafe and
fitness center

 Typical Column Spacing
40' x 30'

 Elevator
2 elevators. 1 dedicated passenger (3,500 lb capacity) 1 dual purpose for
passenger and freight with front/rear door loading (5,000 lb capacity)

 Spectrum/Charter

4930 DIRECTORS PLACE
SAN DIEGO, CA 92121

NEW 5-STORY CLASS "A"
OFFICE/LAB DEVELOPMENT

±83,944
SQUARE FEET

AVAILABLE NOW



VIRTUAL TOUR







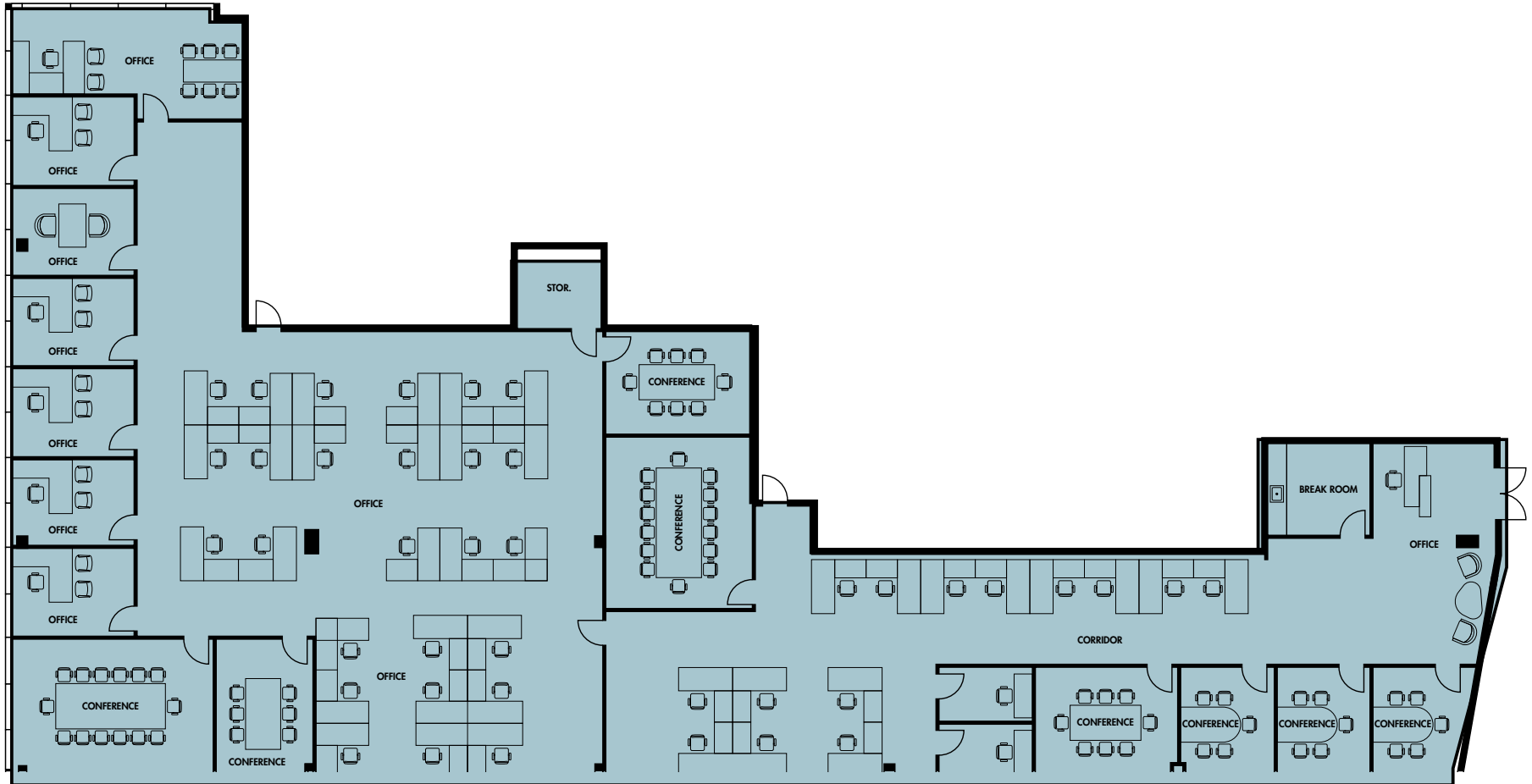
COMMON AREA RENDERINGS





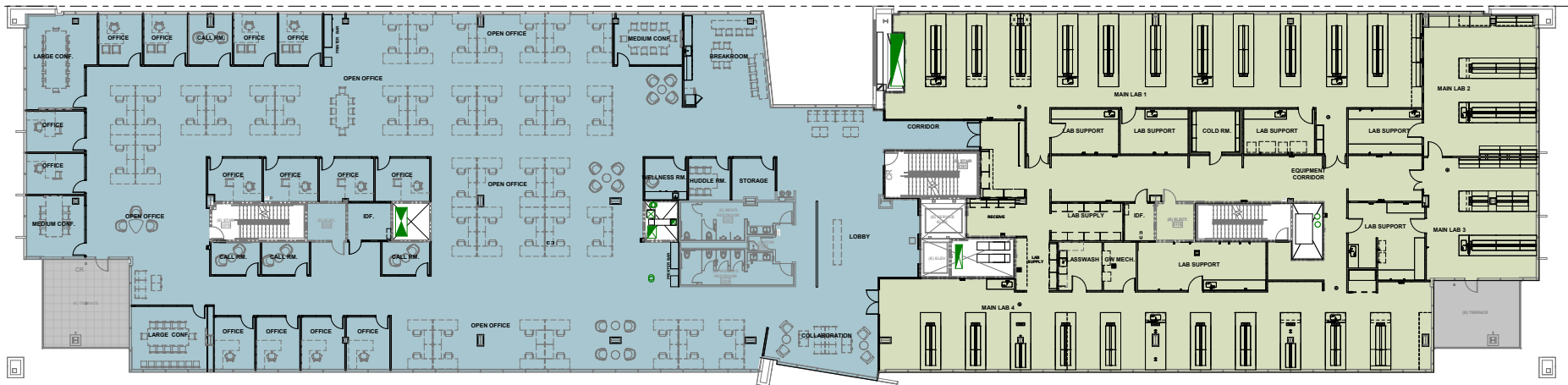


EXISTING PLAN





EXISTING PLAN



EXISTING PLAN









Healthpeak (NYSE: DOC) is a healthcare real estate investment trust that builds, owns, and manages world-class facilities for healthcare Discovery and Outpatient Care.

With expertise in the ownership and management of Outpatient Medical and Lab properties, we deliver real estate solutions for professionals and patients where health and well-being thrive.

Our portfolio of +/- 700 high-quality assets is leased to leading biopharma and health system tenants. As a publicly traded S&P 500 company (NYSE: DOC), we are positioned to deliver sustained benefits to our investors and communities we serve.

Strong, Stabilized REIT



Healthpeak is one of the largest publicly-traded owners of healthcare real estate in the United States, with a portfolio of ± 700 properties and \$23+ Billion Enterprise Value.



Backed by over 40 years of deep industry expertise as a public company, Healthpeak has delivered more than 3 million square feet of state-of-the-art lab space and a growing portfolio of outpatient medical facilities.



±11 million sq. ft. of existing lab space nationwide across ±140 properties in three key life science markets. Plus, ±37 million sq. ft. of outpatient medical space and ±10,000 CCRC units.



Gateway at Directors Science Park - LEED Silver

Sustainable Growth



Environmental Responsibility



Social Responsibility



Corporate Governance Responsibility



The Boardwalk - LEED Gold



DIRECTORS SCIENCE PARK

GATEWAY
4930 DIRECTORS PLACE
SAN DIEGO | CA | 92121

ANDREW HUGGETT

Lic. 01468969
+1 619 204 4504
andrew.huggett@cbre.com

LAUREN FULLER

Lic. 02124477
+1 818 967 8157
lauren.fuller@cbre.com

MIKE RUFF

Lic. 01269001
+1 858 472 3973
mike.ruff@cbre.com



© 2026 CBRE, Inc. All rights reserved. This information has been obtained from sources believed reliable, but has not been verified for accuracy or completeness. You should conduct a careful, independent investigation of the property and verify all information. Any reliance on this information is solely at your own risk. CBRE and the CBRE logo are service marks of CBRE, Inc. All other marks displayed on this document are the property of their respective owners, and the use of such logos does not imply any affiliation with or endorsement of CBRE. Photos herein are the property of their respective owners. Use of these images without the express written consent of the owner is prohibited.

Healthpeak® | 

CBRE