

# MERIDIAN ORANGE CENTER

RETAIL SPACE

FOR LEASE • UP TO 1,200 SQ FT  
655-691 S MAIN ST., ORANGE, CA



COMMERCIAL  
WEST  
BROKERAGE

COMMERCIAL WEST BROKERAGE • 949-723-7300 • [WWW.COMMERCIALWEST.COM](http://WWW.COMMERCIALWEST.COM)



# MERIDIAN ORANGE CENTER

## Retail Space Available

Retail opportunity at Meridian Orange Center, located directly on Main Street with visibility from CA-22 commuter Freeway. Join a strong lineup of national and regional tenants.

- High visibility space center (40,000+ CPD on Main St)
- Immediate co-tenants include Laser Away (coming soon), Wingstop (coming soon) Starbucks, Rubios, Verizon, and more
- Strong daytime population; center is located near busy Main Place Mall and St Joseph Health and CHOC Children's Medical Center
- Immediate proximity to residential: Windsor Apartments (280 units), Eleven10 Apartments (260 units), Aura Apartments (295 units), Cameo Apartments (262 units)

### LOCATION

**655-691 S Main Street**

SEQ Main St. & CA-22 Freeway  
Orange, CA 92868

### AVAILABLE

**Suite 205** | 1,050 Sq. Ft.

**Suite 230** | 1,200 Sq. Ft. [Dental Office - Available April 2026]

### IN GOOD COMPANY

Meridian Orange Center is located near one of the busiest medical complexes in the region - Providence St Joseph Health and CHOC Children's Medical Center. The centers have thousands of employees and patients, offering a strong daytime population near the center.



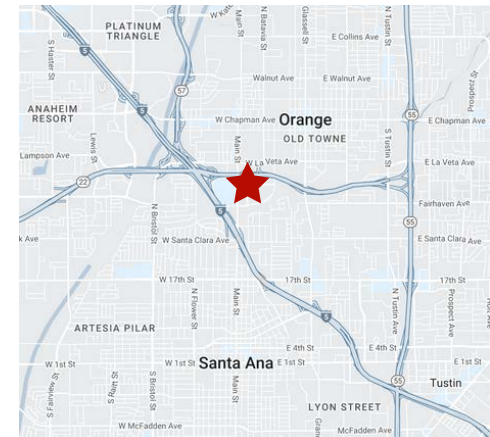
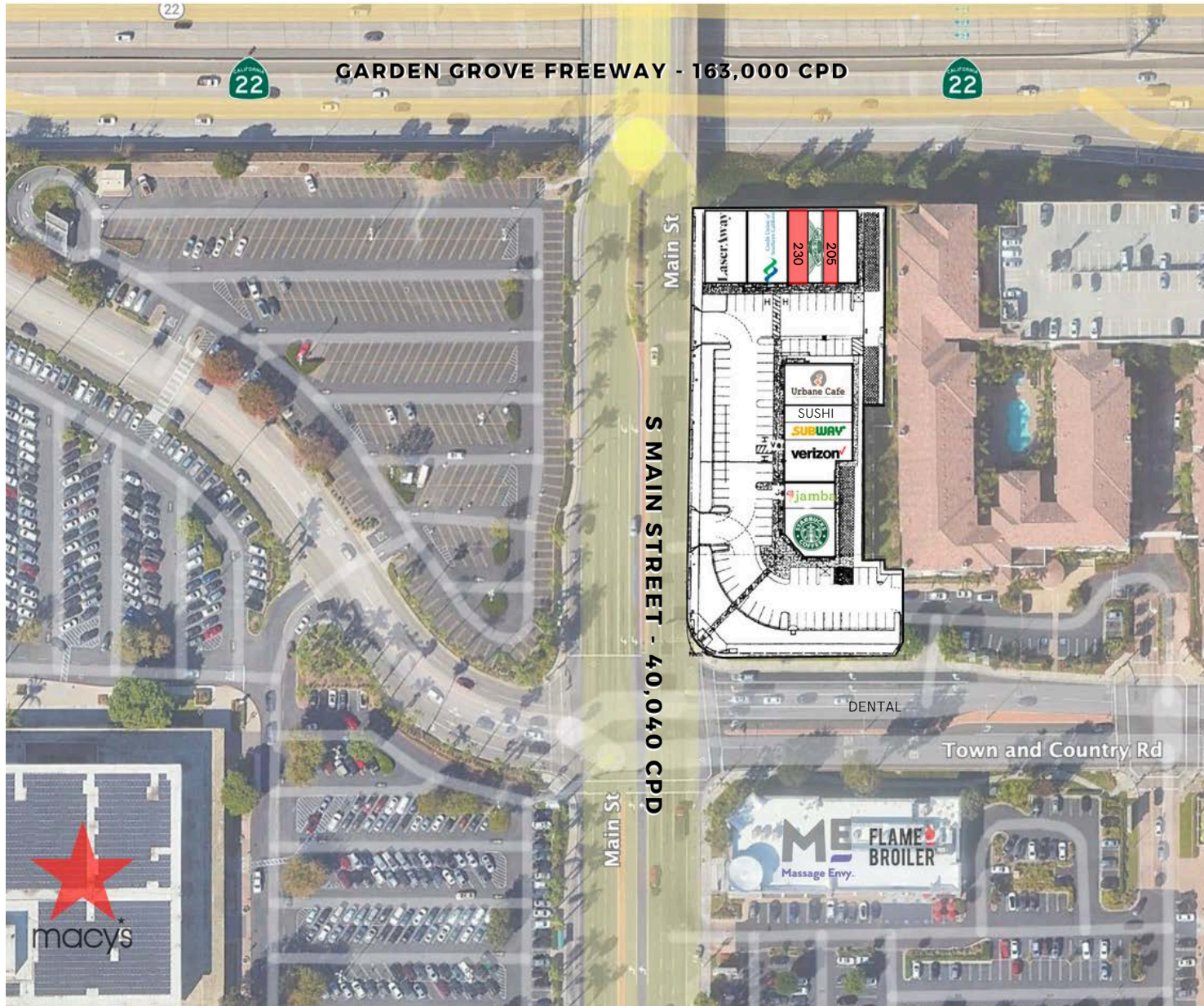
COMMERCIAL WEST BROKERAGE

Doug Wombacher | LIC# 1424025

Matt Berry | LIC# 2134414

(949) 723-7300 | mberry@commercialwest.com





VICINITY

**FOR LEASE**

Suite 205 | 1,050 SQ FT

Suite 230 | 1,200 SQ FT



655-691 S MAIN STREET  
**ORANGE, CA**

Matt Berry | LIC# 2134414  
Doug Wombacher | LIC# 1424025  
949.723.7300 | mberry@commercialwest.com



# Location

Ideal Orange location situated directly on Main Street off CA-22 Freeway near the I-5 interchange.

**MERIDIAN ORANGE CENTER**  
655-691 S MAIN STREET  
ORANGE, CA 92868

SUITE 205 | 1,050 SQ. FT.  
SUITE 205 | 1,200 SQ. FT.





# BY THE NUMBERS

655-691 S Main Street, Orange, CA92868

## ESTIMATED POPULATION

1 mi | 28,249  
2 mi | 114,506  
3 mi | 279,868

## AVERAGE HH INCOME

1 mi | \$111,237  
2 mi | \$106,128  
3 mi | \$104,312

## DAYTIME POPULATION

1 mi | 39,106  
2 mi | 142,280  
3 mi | 305,930

COMMERCIAL WEST BROKERAGE



Doug Wombacher | LIC# 1424025  
Matt Berry, LIC#2134414  
949.723.7300 | mberry@commercialwest.com  
www.commercialwest.com