



## 1351 S Grove Ave Unit 109/110

Ontario, California 91761

### Property Highlights

- 4,920 SF High Image Flex Condo
- 3,765 SF of Office and Lab Space
- 16' Minimum Clear
- Grade Level Loading
- Major Street Frontage on Grove Ave
- BP Zoning
- Located Minutes From 60 Freeway



For more information

**Richard Lee, SIOR**

O: 909.243.7601  
rlee@naicapital.com | CalDRE #01757870

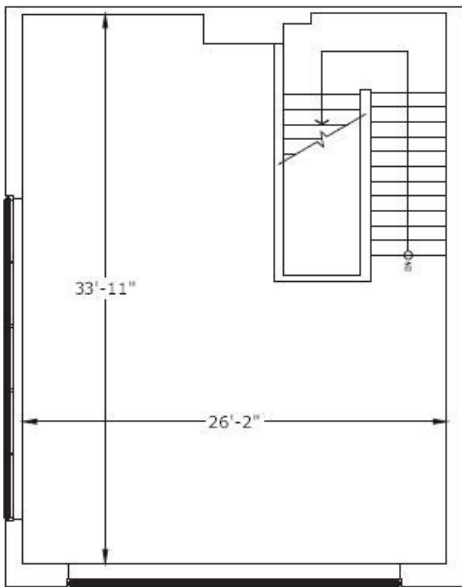
**Nicholas Chang, CCIM, SIOR**

O: 909.243.7614  
nchang@naicapital.com | CalDRE #01344844

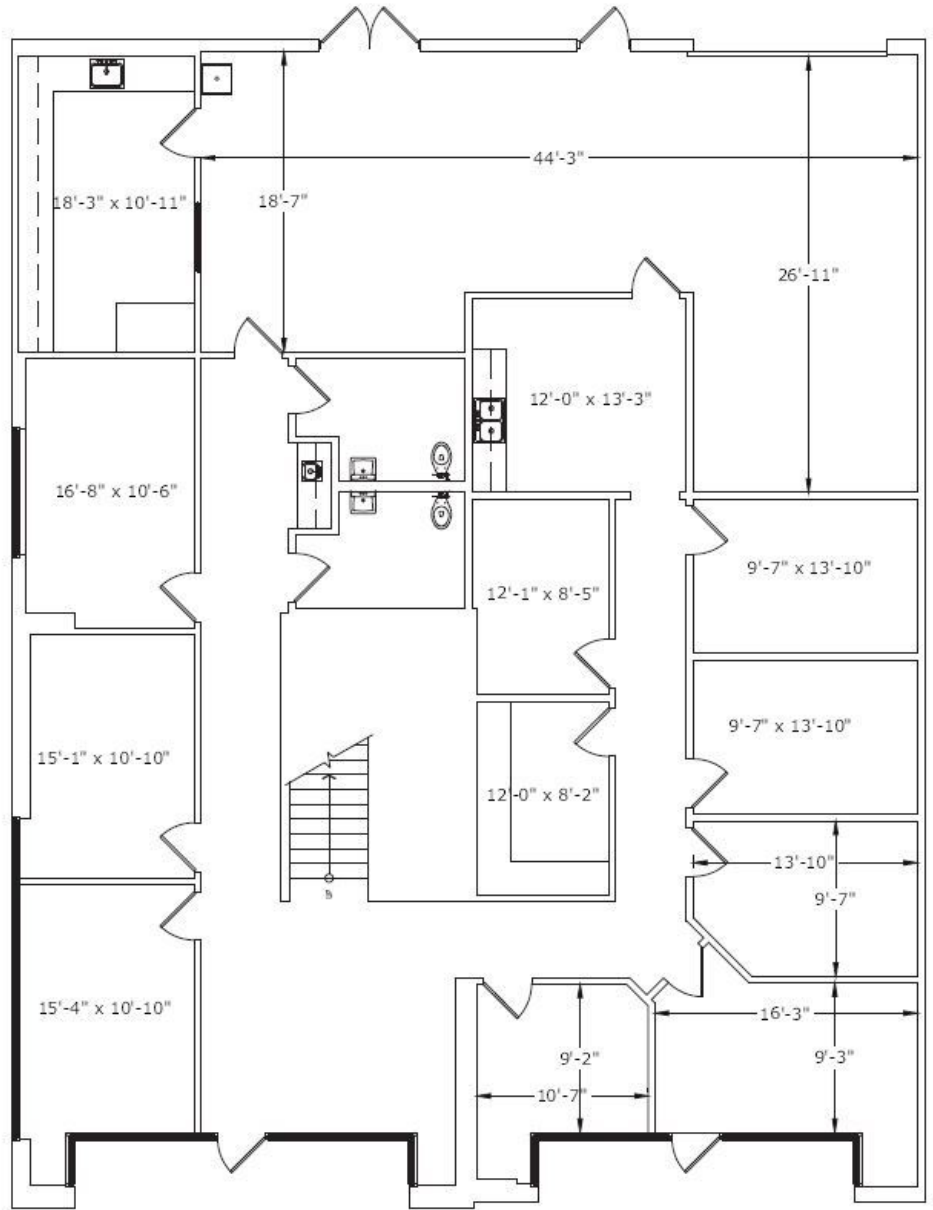
**Justin Kuehn**

O: 909.243.7627  
jkuehn@naicapital.com | CalDRE #01966182

For Sale or Lease  
 High Image Flex Condo With  
 Frontage On Grove Ave



**LEVEL 2**



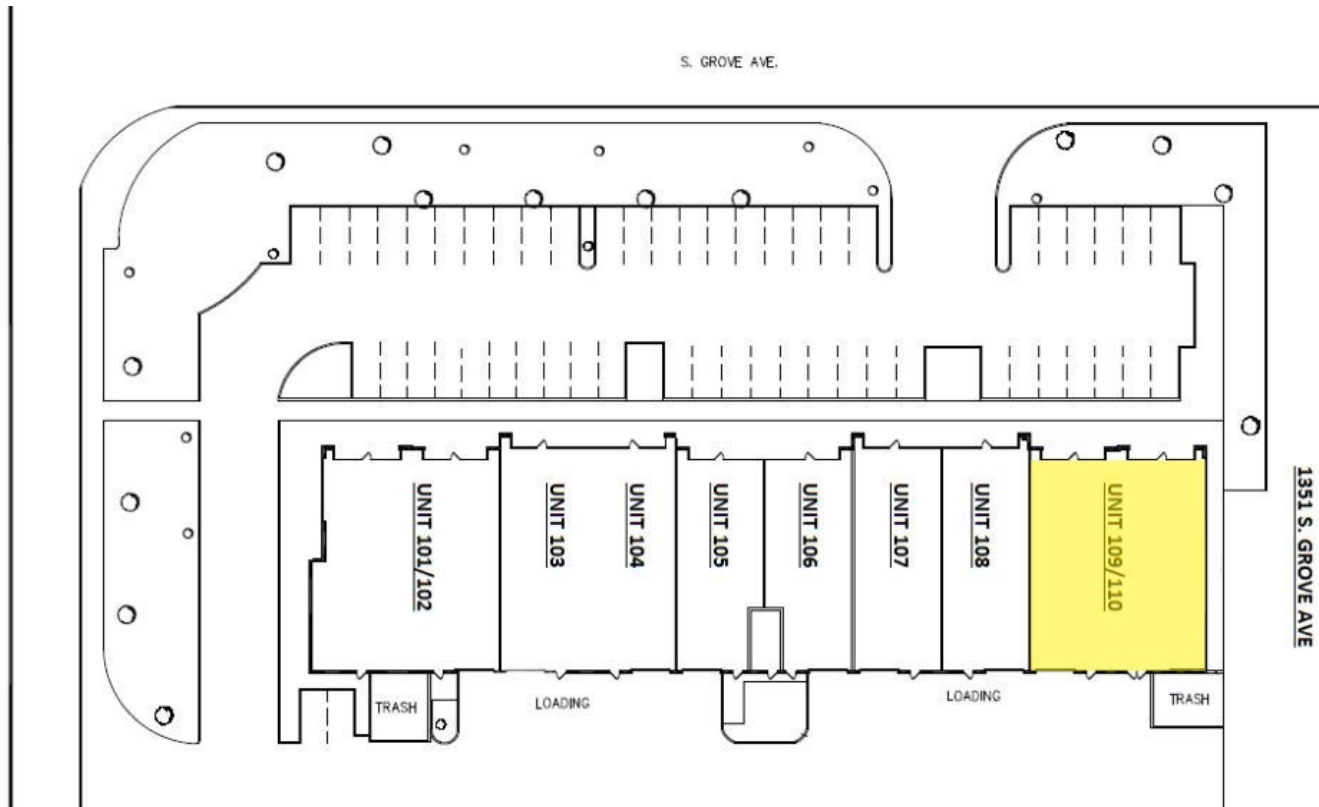
**LEVEL 1**

**Richard Lee, SIOR**  
 909.243.7601  
 rlee@naicapital.com  
 CalDRE #01757870

**Nicholas Chang, CCIM, SIOR**  
 909.243.7614  
 nchang@naicapital.com  
 CalDRE #01344844

**Justin Kuehn**  
 909.243.7627  
 jkuehn@naicapital.com  
 CalDRE #01966182

For Sale or Lease  
High Image Flex Condo With  
Frontage On Grove Ave



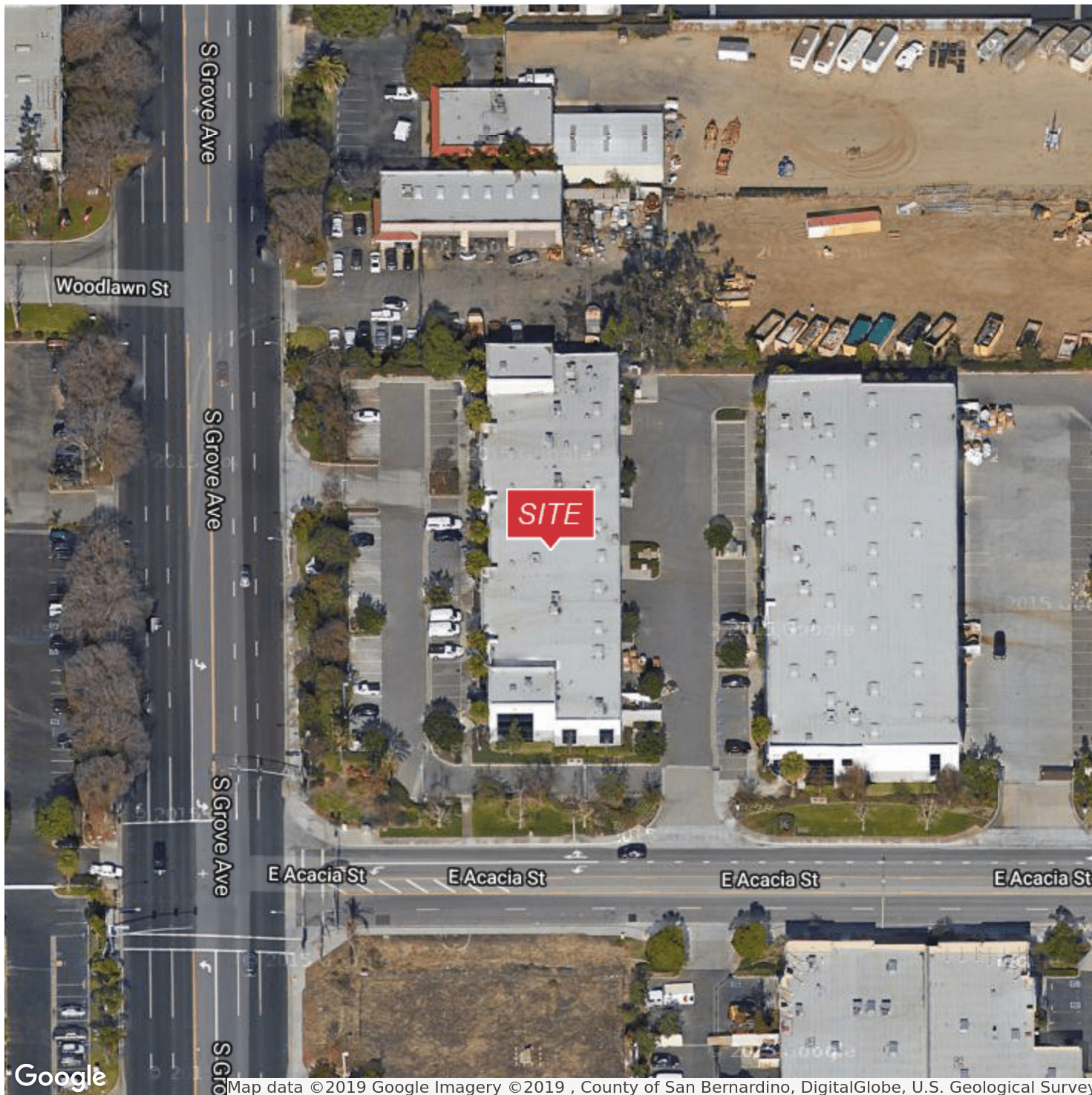
**Richard Lee, SIOR**  
909.243.7601  
rlee@naicapital.com  
CalDRE #01757870

**Nicholas Chang, CCIM, SIOR**  
909.243.7614  
nchang@naicapital.com  
CalDRE #01344844

**Justin Kuehn**  
909.243.7627  
jkuehn@naicapital.com  
CalDRE #01966182



For Sale or Lease  
High Image Flex Condo With  
Frontage On Grove Ave



**Richard Lee, SIOR**  
909.243.7601  
rlee@naicapital.com  
CalDRE #01757870

**Nicholas Chang, CCIM, SIOR**  
909.243.7614  
nchang@naicapital.com  
CalDRE #01344844

**Justin Kuehn**  
909.243.7627  
jkuehn@naicapital.com  
CalDRE #01966182