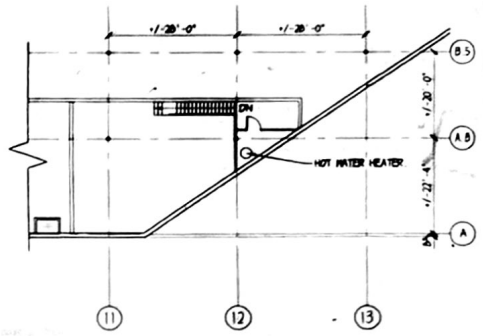
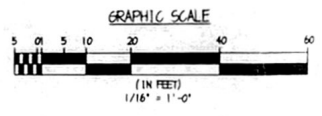


**A** OVERALL GROUND FLOOR PLAN  
 EX-100 SCALE: 1/16" = 1'-0"  
 PROJECT NORTH



**B** MEZZANINE FLOOR PLAN  
 EX-101 SCALE: 1/16" = 1'-0"  
 PROJECT NORTH

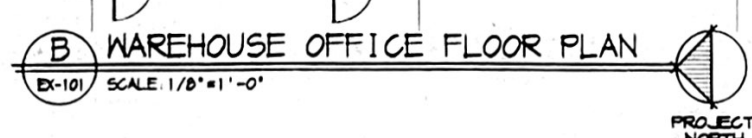
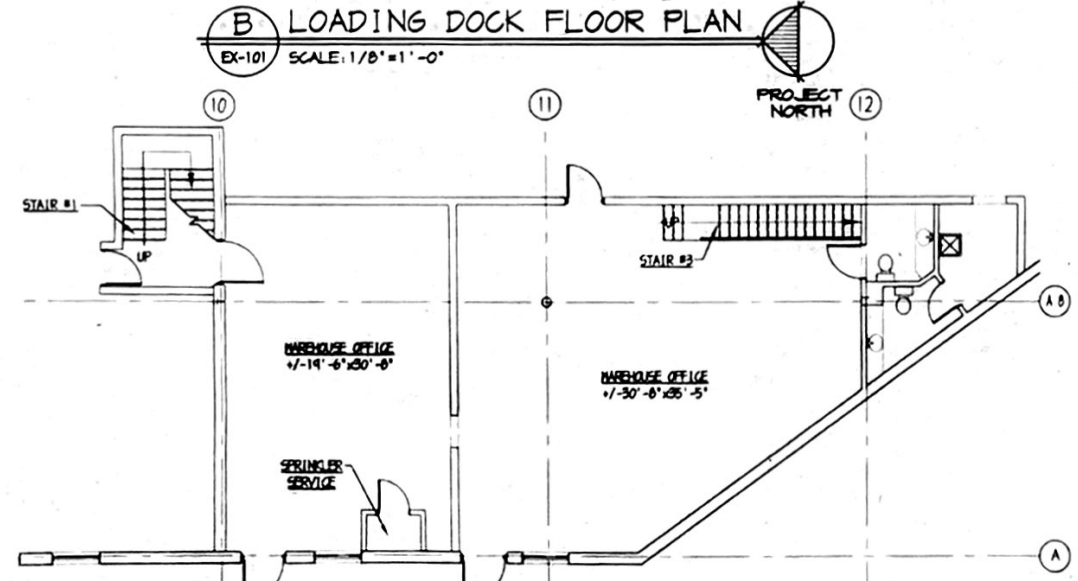
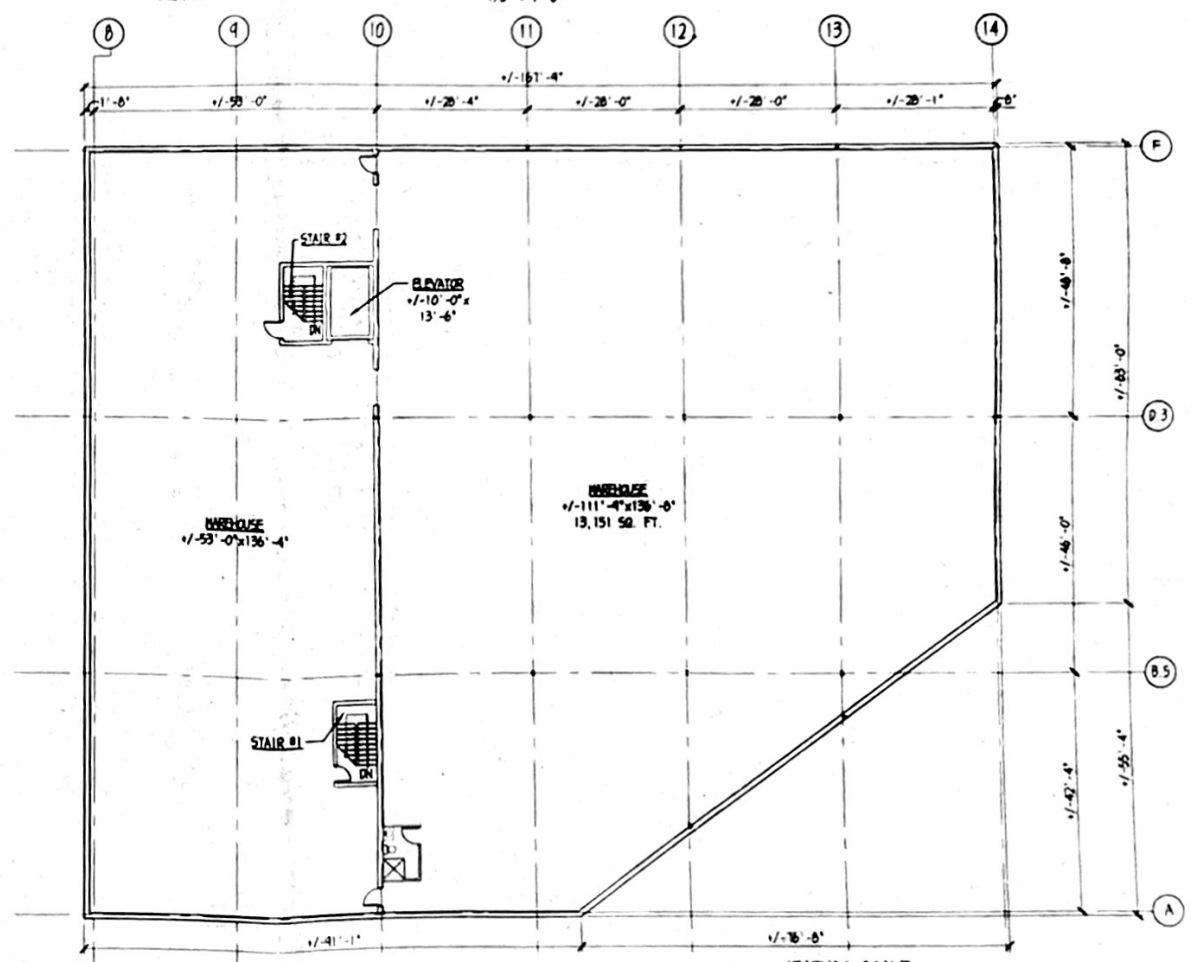
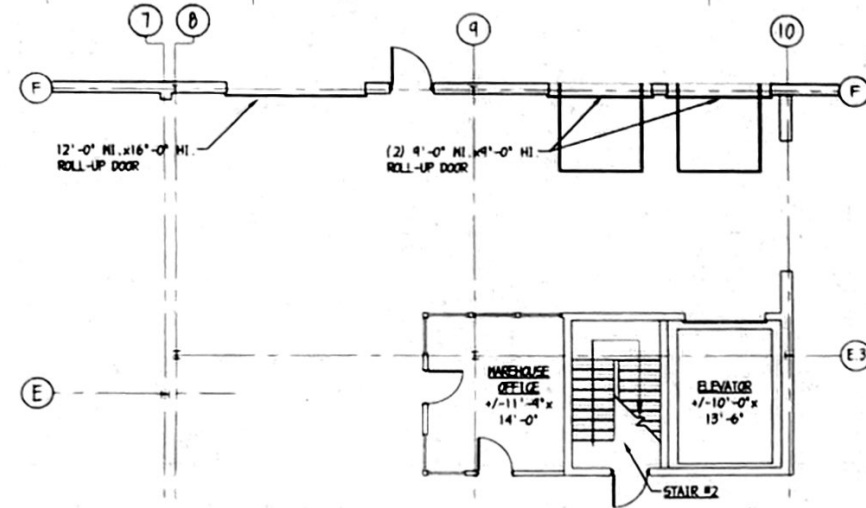
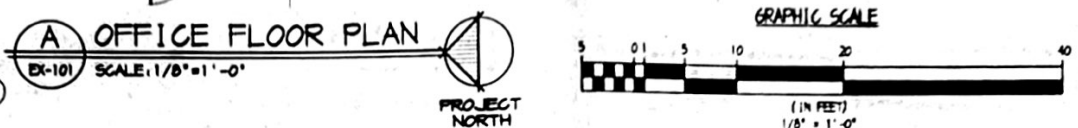
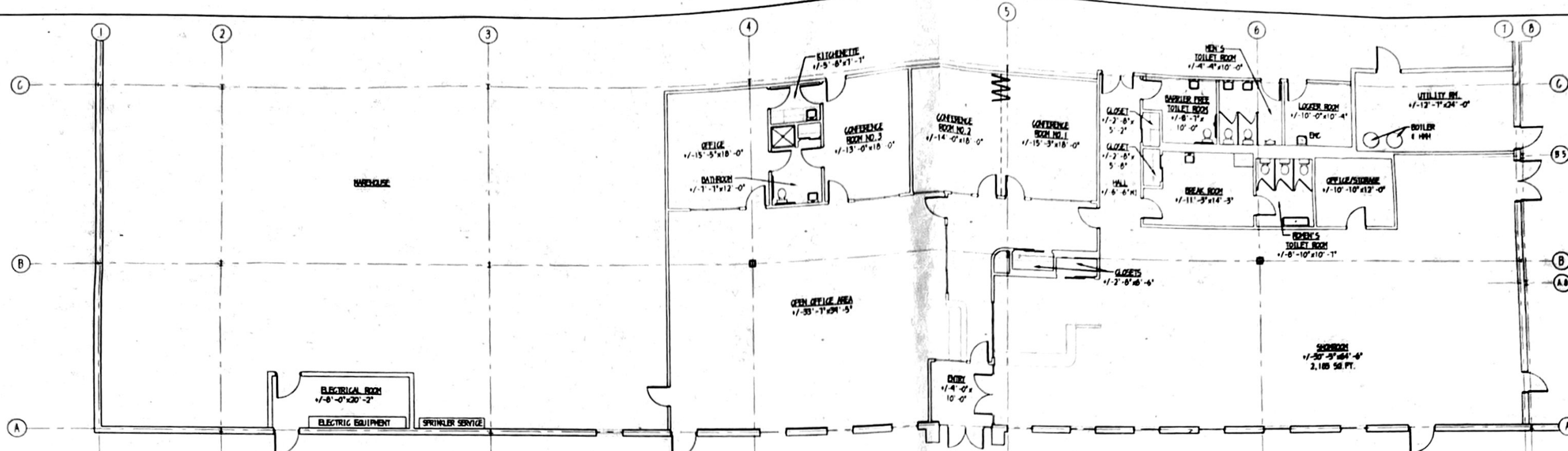
16 MAY 2025 FOR REVIEW  
 08:53 8/16/2024

EXISTING CONDITIONS FOR:  
**APPCO PAPER & PLASTIC CORP.**

3447 AUSTIN BOULEVARD  
 OCEANSIDE, NEW YORK

**BLOW GARRETT GROUP**  
 ARCHITECTS AND PLANNERS, P.C.  
 161 MAIN ST. • RIDGEFIELD PARK, NJ 07660  
 (201) 807-0407 • FAX (201) 807-0510  
 DAVID W. BLOW ARCHITECT  
 MICHAEL GARRETT ARCHITECT

EXISTING GROUND FLOOR PLAN DRAWING NUMBER  
**EX-100**



16 MAY 2025 FOR REVIEW  
BLAS & BROWN

EXISTING CONDITIONS FOR:  
**APPCO PAPER & PLASTIC CORP.**

3947 AUSTIN BOULEVARD  
OCEANSIDE, NEW YORK

BLOW GARRETT GROUP  
ARCHITECTS AND PLANNERS, P.C.  
161 MAIN ST. • RIDGEFIELD PARK, NJ 07660  
(201) 807-0407 • FAX (201) 807-0509  
DAVID S. BLOW ARCHITECT IN CHARGE  
ANTHONY GARRETT ARCHITECT

EXISTING PART 4  
SECOND FLOOR PLANS

EX-