

436 S Lansdown Ave Sublease

16,000 SF Office; 10,300 SF Warehouse Space Available



Space:

- 8,000 SF on the 2nd floor through the lease expiration date
- Entire 16,004 SF office space and 10,300 SF of warehouse/storage space through the lease expiration date

Term:

- Through December 31, 2025

Asking Rent:

- Negotiable
-



Key Highlights

- Sublandlord willing to lease 2nd floor (8,000 SF) of Office Space or entire facility (16,000 SF Office; 10,300 SF Warehouse/Storage Space)
 - Furniture can be made available
 - Wired and ready for occupancy
 - Ample Parking
 - On-Site Gym
-

For more information, please contact:

John Leskow

+1 267 256 7591
jleskow@savills.us

Information contained herein has been obtained from sources deemed reliable. While we believe this information to be true, Savills makes no guarantee, warranties or representations as to the completeness or accuracy thereof. All information submitted is subject to errors and/or omissions.

SUBLEASE 436 S. Lansdown Ave, Yeadon, PA



For more information, please contact:

John Leskow

+1 267 256 7591

jleskow@savills.us

Information contained herein has been obtained from sources deemed reliable. While we believe this information to be true, Savills makes no guarantee, warranties or representations as to the completeness or accuracy thereof. All information submitted is subject to errors and/or omissions.

savills.us



SUBLEASE 436 S. Lansdown Ave, Yeadon, PA



For more information, please contact:

John Leskow

+1 267 256 7591

jleskow@savills.us

Information contained herein has been obtained from sources deemed reliable. While we believe this information to be true, Savills makes no guarantee, warranties or representations as to the completeness or accuracy thereof. All information submitted is subject to errors and/or omissions.

savills.us



SUBLEASE 436 S. Lansdown Ave, Yeadon, PA



For more information, please contact:

John Leskow

+1 267 256 7591

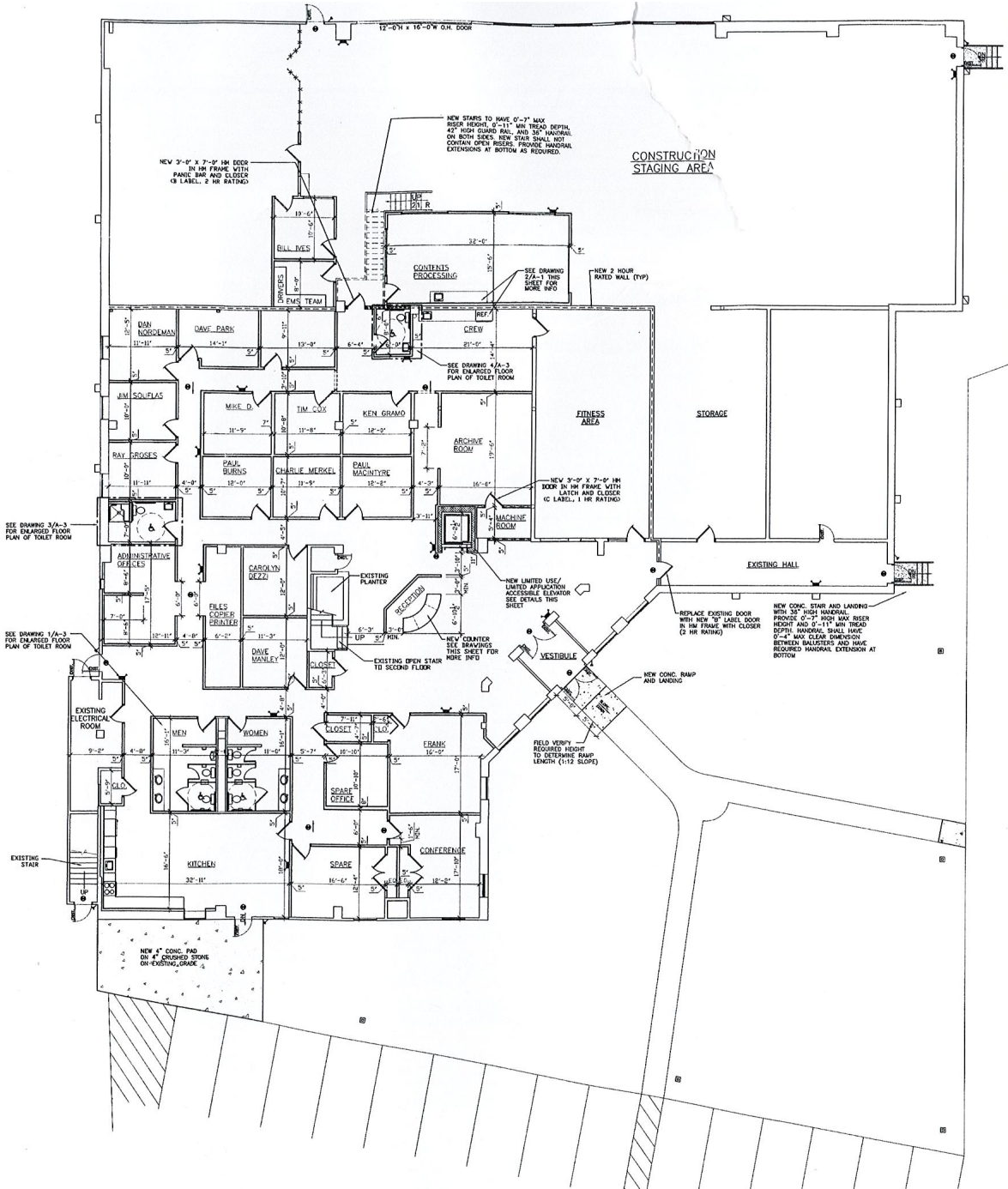
jleskow@savills.us

Information contained herein has been obtained from sources deemed reliable. While we believe this information to be true, Savills makes no guarantee, warranties or representations as to the completeness or accuracy thereof. All information submitted is subject to errors and/or omissions.

savills.us



First Floor



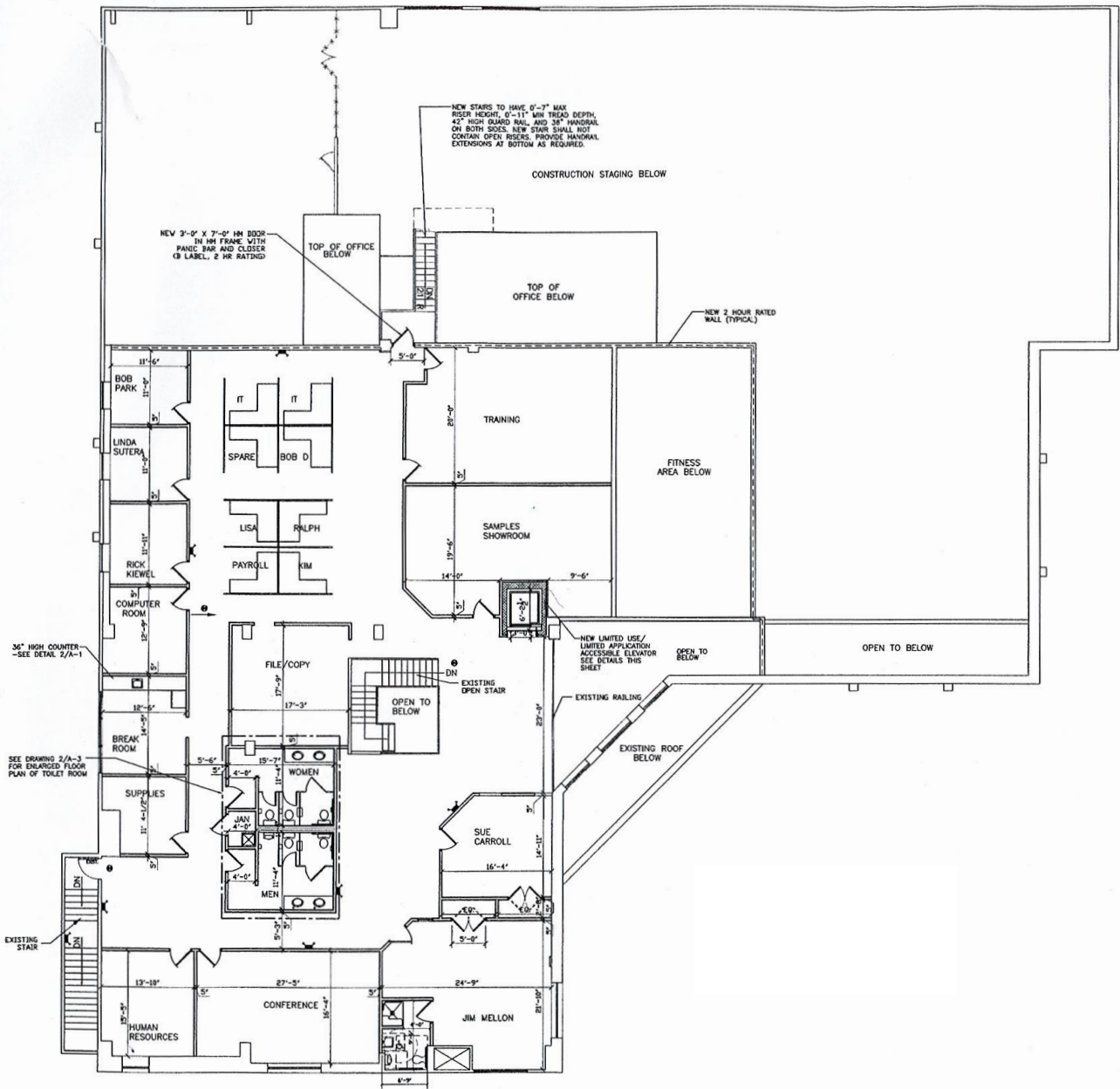
For more information, please contact:

John Leskow
+1 267 256 7591
jleskow@savills.us

Information contained herein has been obtained from sources deemed reliable. While we believe this information to be true, Savills makes no guarantee, warranties or representations as to the completeness or accuracy thereof. All information submitted is subject to errors and/or omissions.



Second Floor



For more information, please contact:

John Leskow

+1 267 256 7591

jleskow@savills.us

Information contained herein has been obtained from sources deemed reliable. While we believe this information to be true, Savills makes no guarantee, warranties or representations as to the completeness or accuracy thereof. All information submitted is subject to errors and/or omissions.

savills.us

