



608 HAMPTON DRIVE VENICE, CA 90291



Discover the perfect workspace in the heart of Venice, just two blocks from the beach! This bright and airy office captures the laid-back charm of a beach town while offering a prime location for your business. Whether you're enjoying a quick break by the ocean, getting a workout in at Gold's Gym, or just soaking up the neighborhood's lively atmosphere, this office brings the best of Venice right to your doorstep. With endless possibilities for creativity and inspiration, it's more than just a place to work—it's a lifestyle!

STATS:

2,000 SQ. FT.

KITCHEN

BATHROOM

4 PRIVATE OFFICES

BACK PATIO

1 PRIVATE PARKING SPACE

KEYPAD ENTRY

RECENTLY RENOVATED

WALK SCORE: 94



BASE RENT -- \$9,064 / MONTH

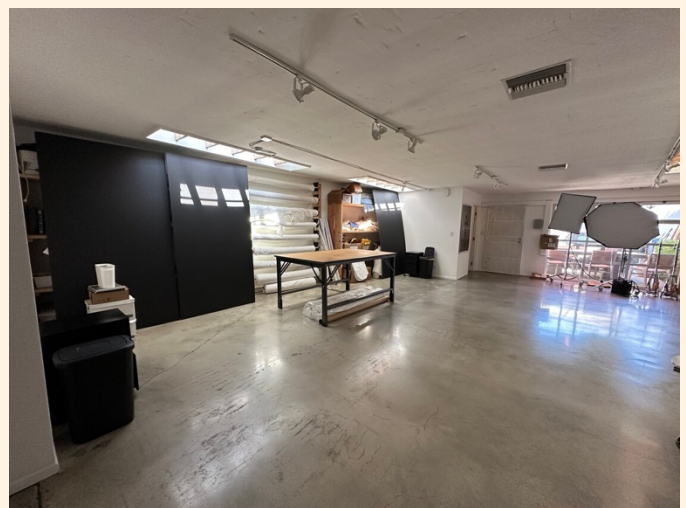
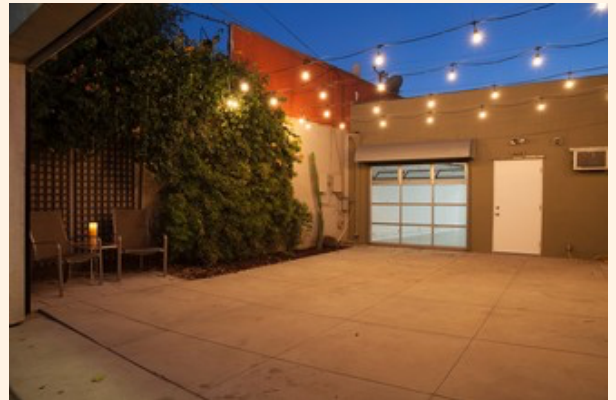
NNN -- \$700 / MONTH

TOTAL \$9,764 PER MONTH

OR \$4.88 PER SQUARE FOOT

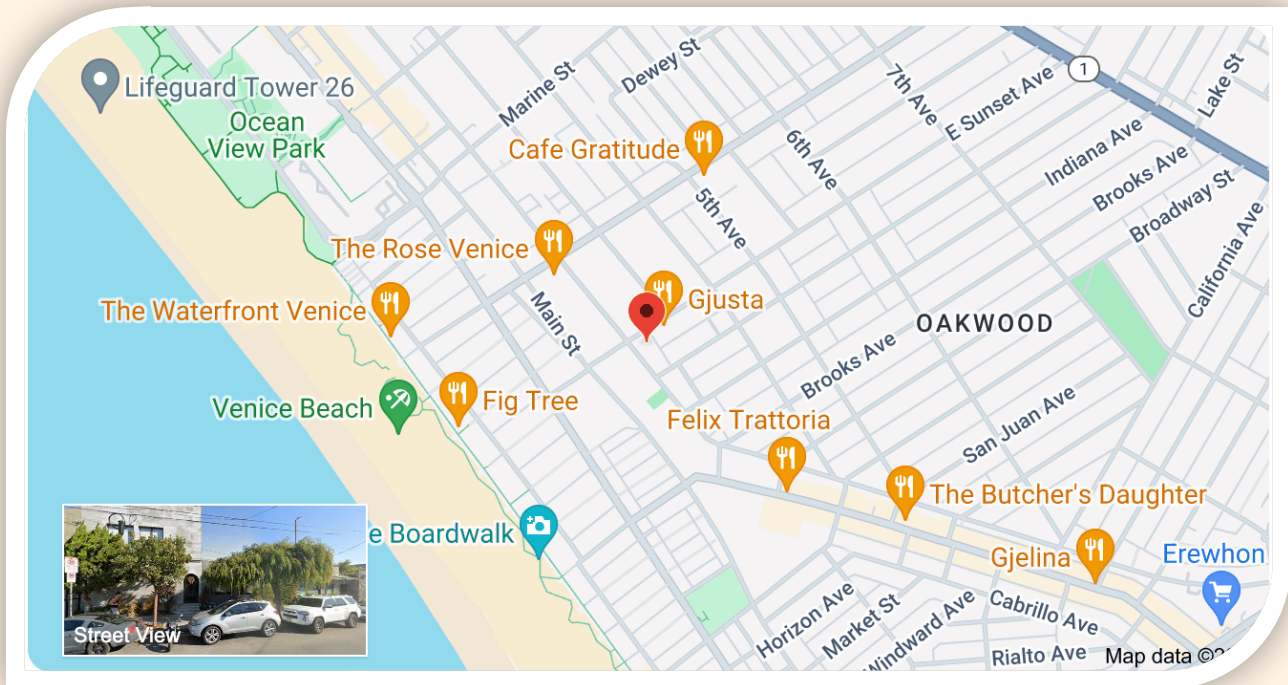
AVAILABLE -- NOW

LEASE EXPIRES -- JULY 1ST, 2025



WHAT 'S NEARBY:

Right next door to the beloved **Gjusta**, a go-to spot for artisan sandwiches, pastries, and fresh bread, this office offers an unbeatable location in the heart of Venice. Just a few steps away, **Abbot Kinney Boulevard** provides a range of dining and shopping options, including **Blue Bottle Coffee** for your morning brew, **Gjelina** for wood-fired pizza, and the plant-based favorite **The Butcher's Daughter**. For those looking for organic groceries or a quick healthy meal, **Erewhon Market** is also conveniently located on Abbot Kinney. Whether it's a casual lunch or an upscale dining experience, you're surrounded by some of Venice's most popular spots.



This location is a fitness enthusiast's dream, with **Gold's Gym Venice**—the iconic “Mecca of Bodybuilding”—right across the street. You'll also find nearby CrossFit studios, yoga centers, and boutique fitness options, making it easy to stay active before or after the workday in one of LA's most health-conscious neighborhoods.

For inquiries, please contact Britny Trabilcy.

Email: britny@deadatlantic.com

Phone: 818-823-6748