

# 830 Third Avenue

SW Corner of East 51st Street | Midtown East



# 830 Third Avenue

SW Corner of East 51st Street | Midtown East

**SIZE:** 5,000 SF Ground Floor  
+ Mezzanine

**FRONTAGE:** ~100'

**POSSESSION:** ASAP

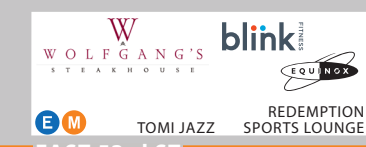

**TRANSPORTATION:** 

## HIGHLIGHTS:

- Formerly *Republic Bank*
- Turnkey condition
- Space includes: Vault space, offices upstairs, ADA access and restrooms
- Close proximity to United Nation's Plaza, Grand Central Terminal, Rockefeller Center
- Neighbors include: *Blank Street Coffee, Chase Bank, Smith & Wollensky, Panda Express, Potbelly, Starbucks, McDonald's, Dill & Parsley, Dig, Urbanspace, Waldorf Astoria, Gyu-Kaku, Dunkin', Wolfgang's Steakhouse, Sugarfish, Duane Reade*



Mezzanine View

			
EAST 53rd ST			
			
EAST 52nd ST			
			
EAST 51st ST			
			
EAST 50th ST			
			
EAST 49th ST			
			

CONTACT OUR BROKERS FOR MORE INFORMATION:

**CAROLINA AZIZ**  
CAziz@ksrny.com  
516.640.6961

**IKE BIBI**  
IBibi@ksrny.com  
347.417.2860

**MADDY SOFFER**  
MSoffer@ksrny.com  
347.752.3350

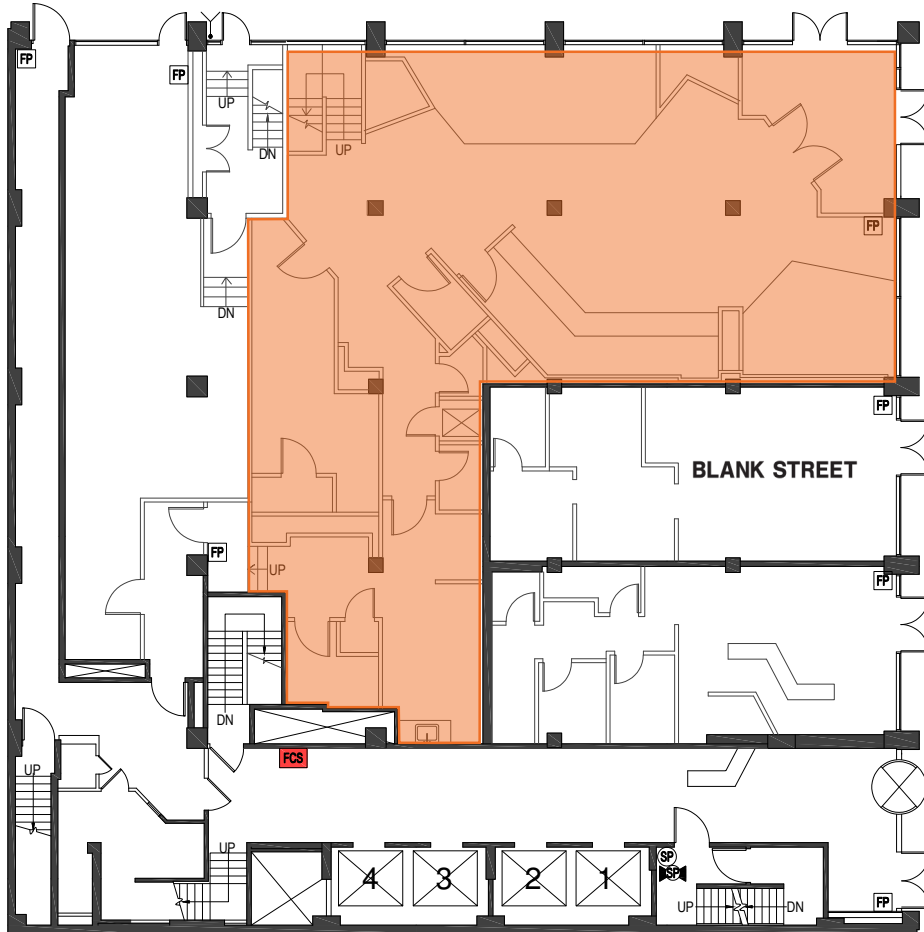


All information supplied in this marketing presentation and/or flyer is from sources deemed reliable and is furnished subject to errors, omissions, modifications, removal of listings from sale/lease and to any listing condition. Any square footage, dimensions, floor plans and/or technical data set forth are approximations and are subject to further elaboration/confirmation.

# 830 Third Avenue

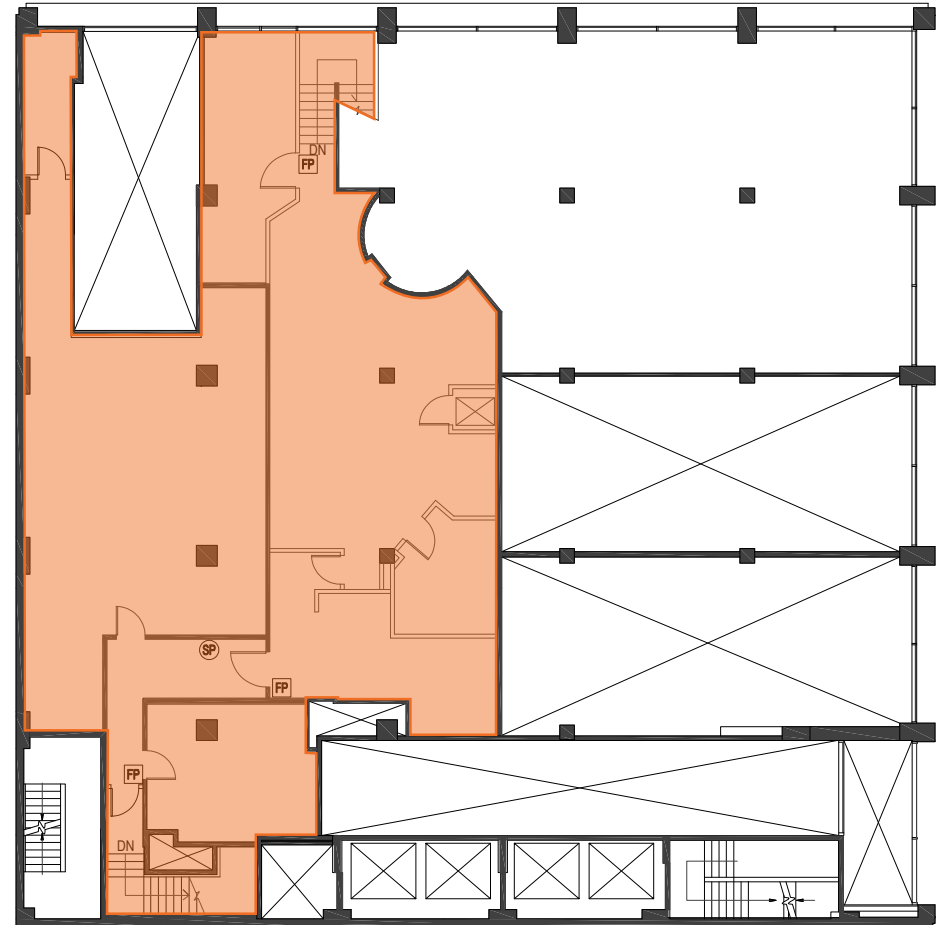
SW Corner of East 51st Street | Midtown East

Floor Plans:  
Ground Floor - 5,000 SF



Third Avenue

Mezzanine



# 830 Third Avenue

SW Corner of East 51st Street | Midtown East

## Interiors

