

ThePomp

Pompano
Beach



CONTENTS

4	Our Vision
6	Location
8	Surrounding Retail
10	Site Plan
14	District Anchors
18	Our Neighborhoods
20	Community Center
22	Hospitality
24	Mainstreet
26	Luxury Residences
28	Lakeside Recreation
30	Office & Logistics
32	A Winning Partnership



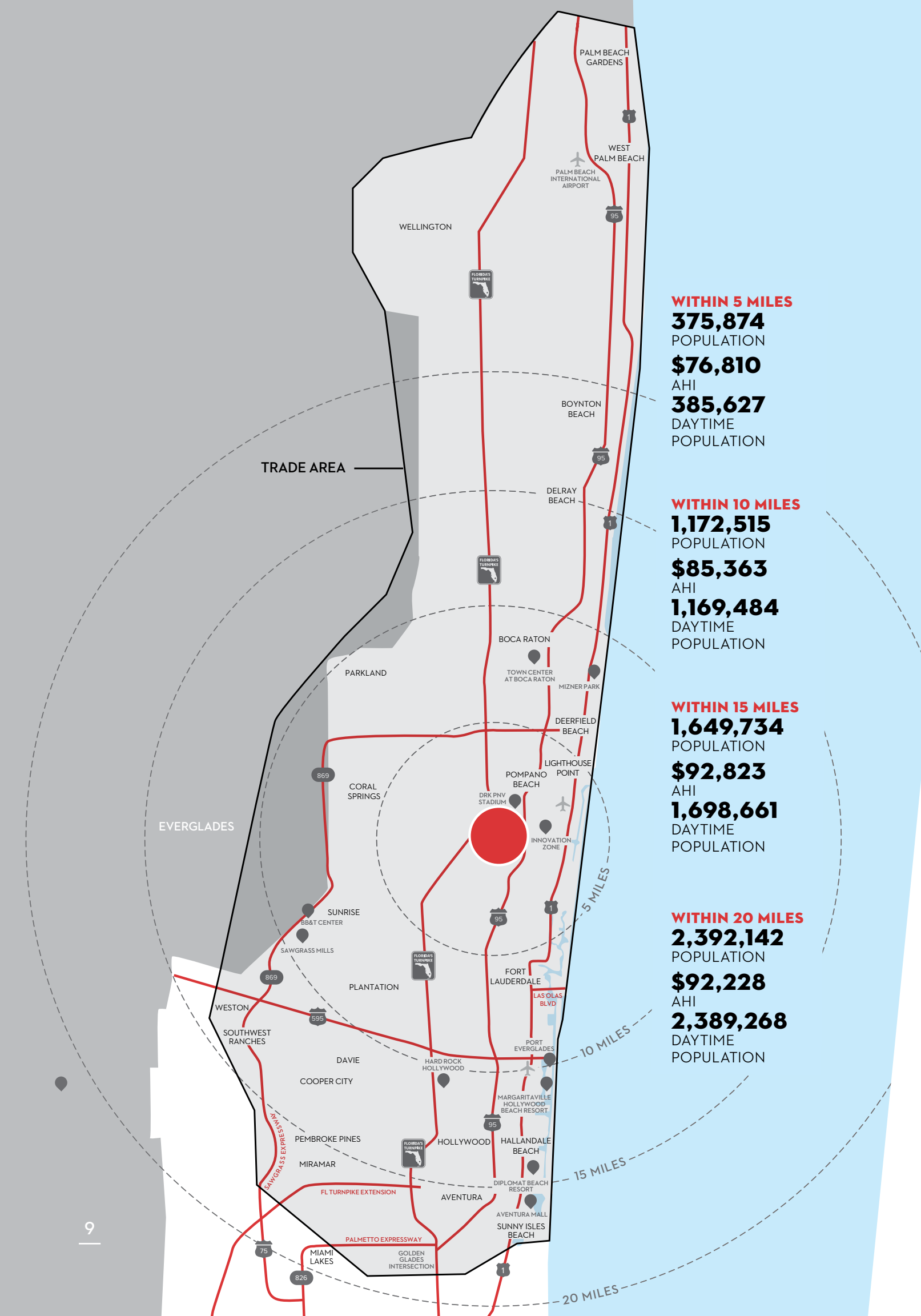
OUR VISION

\$2 BILLION WORLD-CLASS DEVELOPMENT

Presenting The Pomp, a world-class, mixed-use destination in Pompano Beach, Florida, less than 10 miles north of Fort Lauderdale. Developed in partnership with Caesars Entertainment, this \$2 billion project will vastly expand the existing site of Isle Casino Pompano, transforming it into an immersive, 24/7 neighborhood of exciting experiences.







WITHIN 5 MILES

375,874

POPULATION

\$76,810

AHI

385,627

DAYTIME

POPULATION

WITHIN 10 MILES

1,172,515

POPULATION

\$85,363

AHI

1,169,484

DAYTIME

POPULATION

WITHIN 15 MILES

1,649,734

POPULATION

\$92,823

AHI

1,698,661

DAYTIME

POPULATION

WITHIN 20 MILES

2,392,142

POPULATION

\$92,228

AHI

2,389,268

DAYTIME

POPULATION

LOCATION

223 ACRES
IN THE HEART
OF SOUTH EAST
FLORIDA

86%

OF GUESTS VISIT MORE THAN ONCE A YEAR

3.2M

PEOPLE WITHIN PRIMARY TRADE AREA

40%

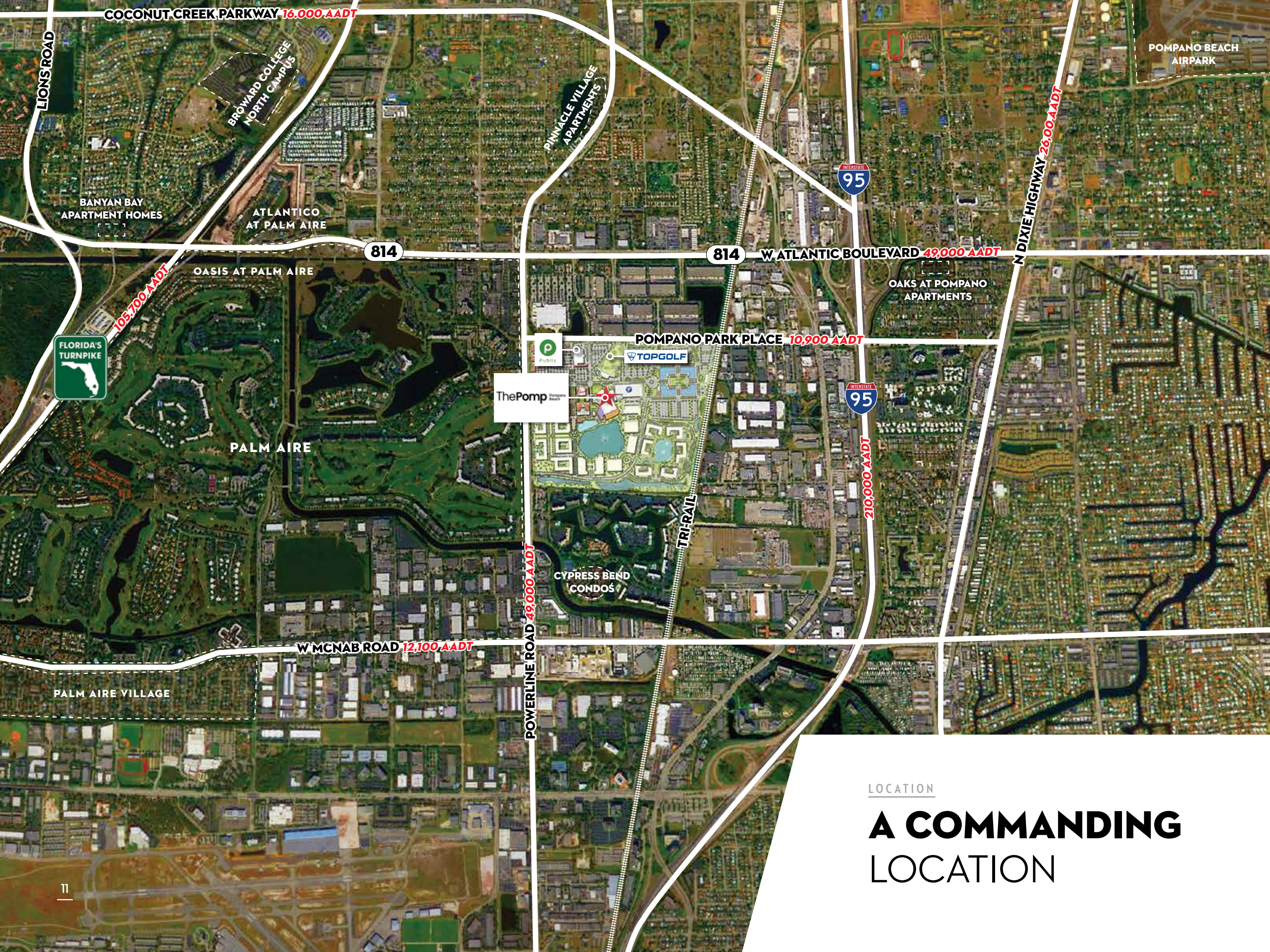
OF VISITORS LIVE 10+ MILES AWAY

20+

MILES OF CASINO DRAWING POWER

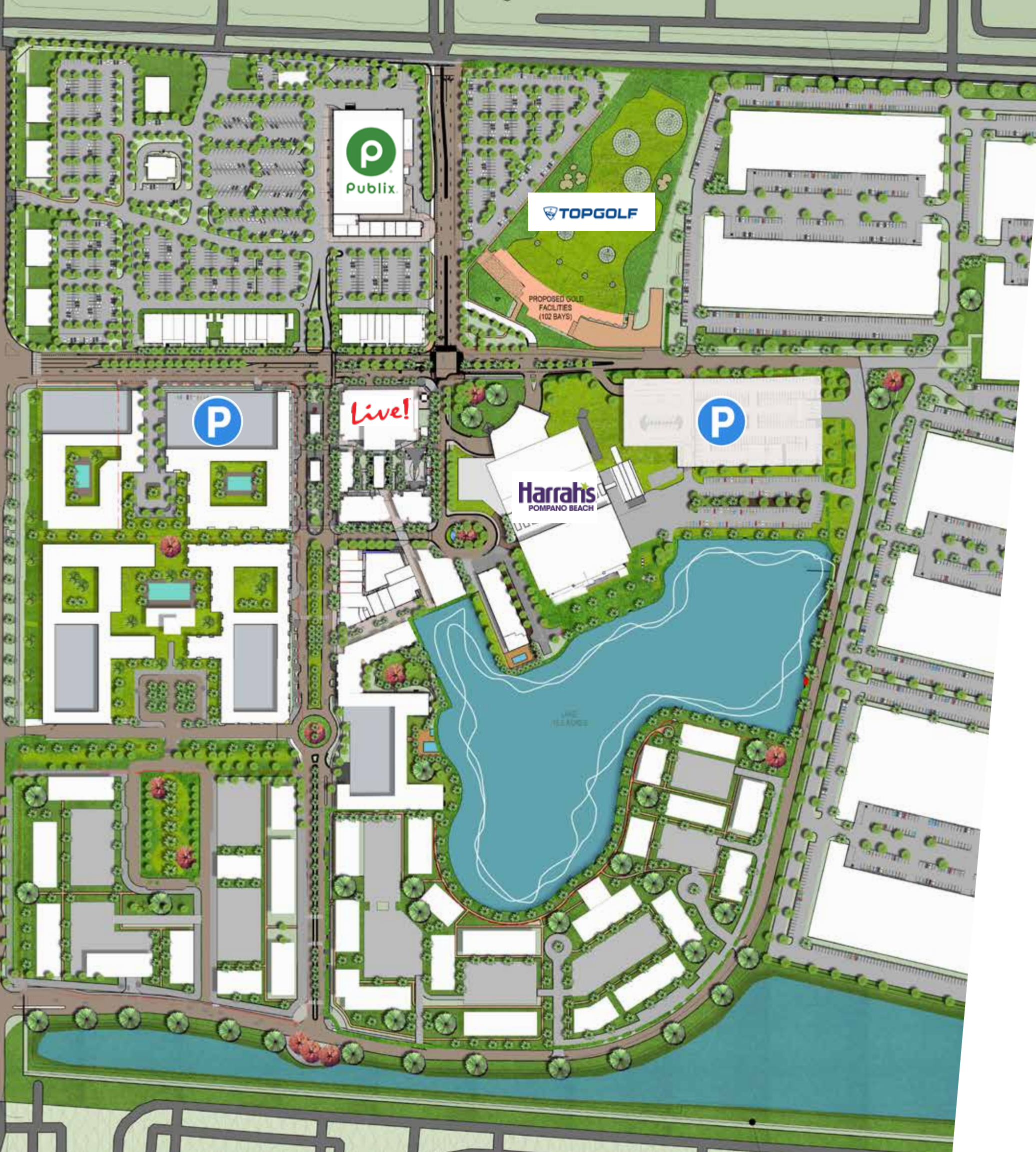
7

DAYS PER WEEK OF TRAFFIC



LOCATION

A COMMANDING LOCATION



THE PROJECT

\$2 BILLION MASTER PLAN

223 ACRES

OF LIVE/WORK/PLAY/STAY ACTION

1.3 MILLION SF

OF RETAIL & ENTERTAINMENT

1.35 MILLION SF

OF CLASS-A OFFICE AND LOGISTICS

4,000

LUXURY RESIDENTIAL UNITS

ONE

WORLD-CLASS HOTEL

12-ACRE

LAKE FOR BOATING AND FISHING

THE PROJECT

THE **LARGEST** **NEW DEVELOPMENT** IN SOUTH EAST FLORIDA

RESIDENTIAL COMMUNITY

LIVE! HOTEL

HARRAH'S
POMPANO
BEACH

LIVE! BLOCK

COMMUNITY CENTER

PUBLIX

TOPGOLF

MAIN STREET

DISTRICT ANCHORS

THE **LIVE!** BLOCK

WELCOMING 55 MILLION ANNUAL VISITORS NATIONWIDE



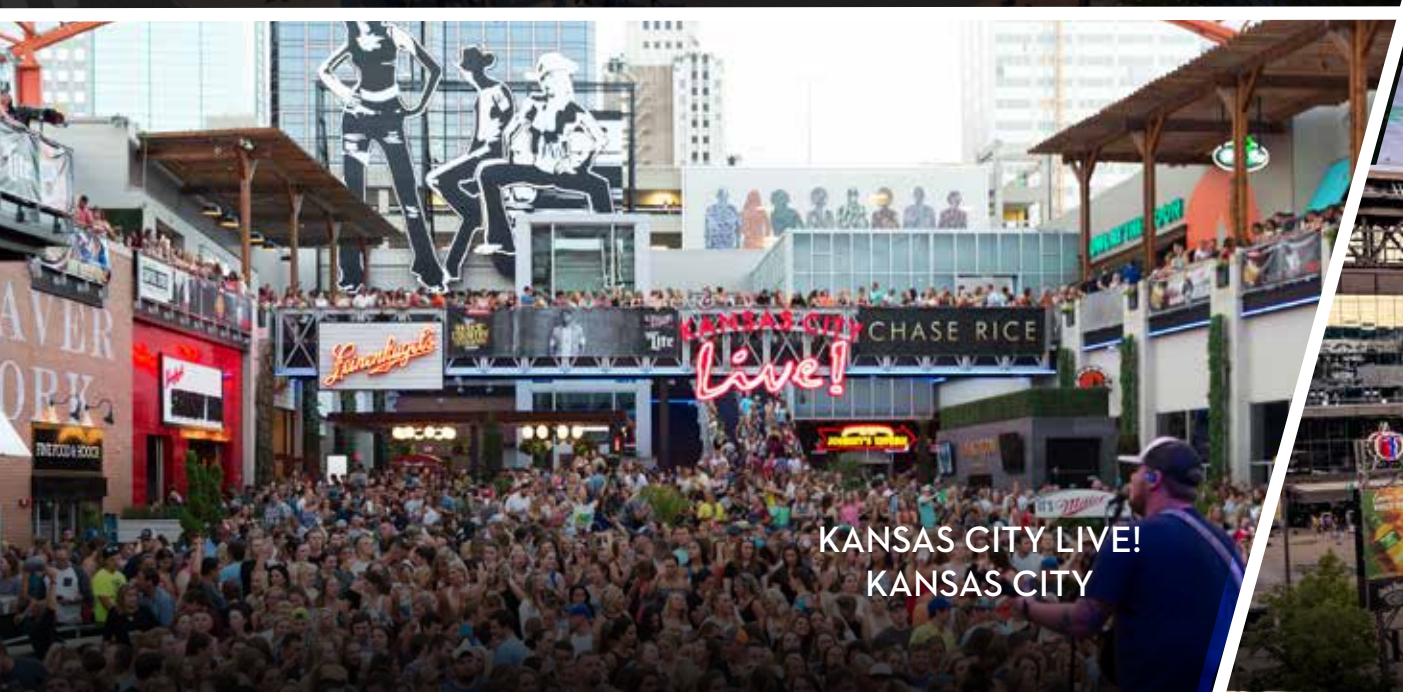
LIVE!
POMPAÑO BEACH



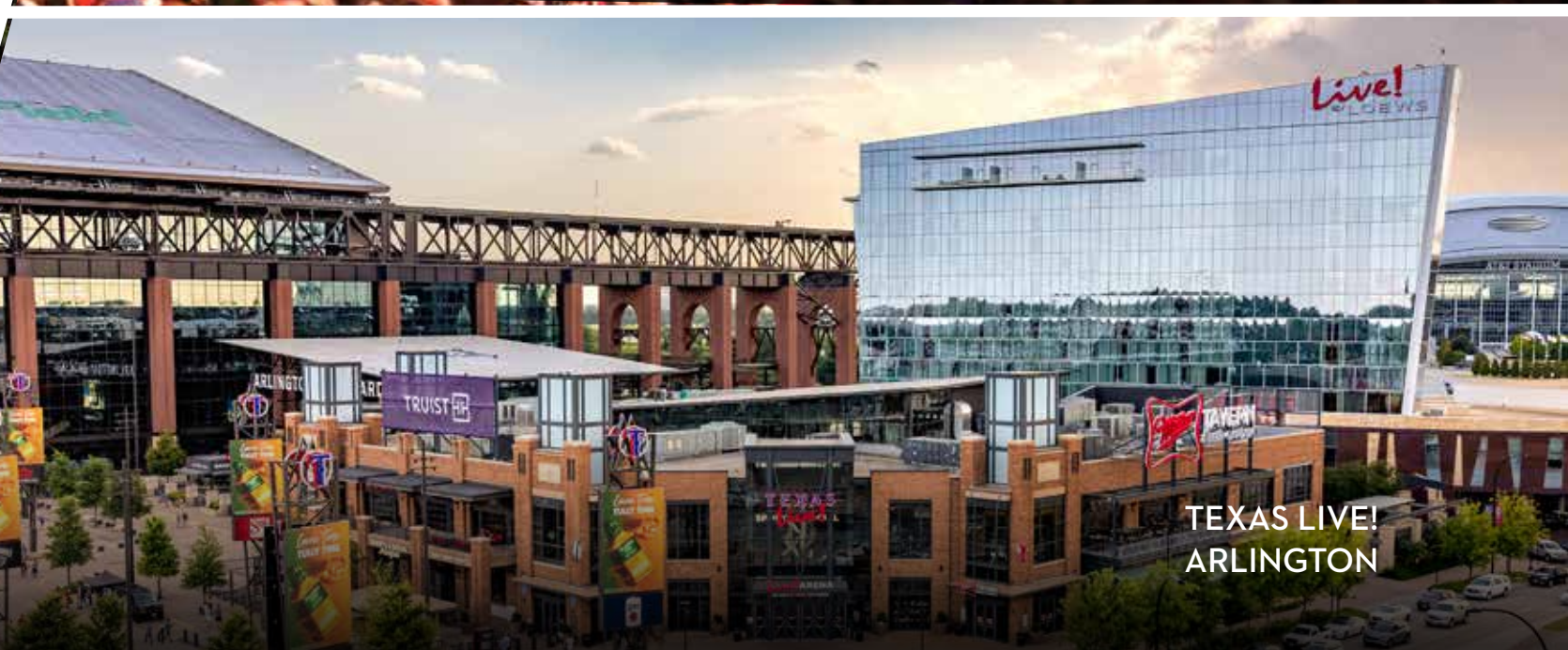
FOURTH STREET LIVE!
LOUISVILLE



XFINITY LIVE!
PHILADELPHIA



KANSAS CITY LIVE!
KANSAS CITY



TEXAS LIVE!
ARLINGTON



SPORTS & SOCIAL

AS FAMILY, WE LOOK OUT FOR EACH OTHER.

Harrah's

POMPAÑO BEACH

PBR
A COWBOY BAR

Banquet

21





OUR NEIGHBORHOODS



COMMUNITY CENTER

950,000 SF
OF RETAIL



LAKESIDE HOSPITALITY

WORLD-CLASS HOSPITALITY

MAINSTREET

DYNAMIC & WALKABLE **MAINSTREET**





RESIDENTIAL

4,000 LUXURY RESIDENCES

RECREATION

12 ACRE LAKE FOR BOATING & FISHING





OFFICE

1.35M SF OF OFFICE
& LOGISTICS SPACE



A WINNING PARTNERSHIP

The Pomp is the result of a winning partnership between two leaders in entertainment and development: Caesars Entertainment and The Cordish Companies.



Caesars Entertainment now encompasses Eldorado Resorts, creating one of the largest and most diversified collections of destinations across the United States. While each of the 55+ world-class resorts offers its own unique amenities, all share a common goal of providing unparalleled family-style service and exhilarating experiences.



The Cordish Companies is the largest and most successful developer of entertainment districts and concepts in the United States. The Baltimore-based, family-owned firm has earned numerous awards, while remaining true to the family's core values of quality, integrity, entrepreneurial spirit, and long-term personal relationships.

Live!

IS POWERED BY
**THE CORDISH
COMPANIES**

The Cordish Companies encompasses four generations of privately held family ownership spanning ten decades, and is now an international conglomerate that includes one of the leading gaming, entertainment, and real estate development companies in the United States. The firm has earned numerous awards—including an unprecedented seven Urban Land Institute Awards for Excellence—while remaining true to the family's core values of quality, integrity, entrepreneurial spirit, and long-term personal relationships.

COMMERCIAL REAL ESTATE

INTERNATIONAL DEVELOPMENT

HOTELS

ENTERTAINMENT DISTRICTS

SPORTS-ANCHORED DISTRICTS

COWORKING SPACES

GAMING

RESTAURANTS

RESIDENTIAL

ThePomp

Pompano
Beach

