

FOR SALE OR LEASE

WINCO ANCHORED PAD

Gentile St & I-15 | Layton, Utah 84041



Property Highlights

- 1.298 Acres For Sale or Lease
- Contact Agents for Pricing
- Drive-Thru Available
- Anchored by Winco
- Amazing I-15 Visibility

JOE MILLS
801.930.6755

jmill@legendcommercial.com

TANNER OLSON
801.930.6752

tolson@legendcommercial.com

801.930.6750
www.legendcommercial.com
2180 S 1300 E, Suite 240 | Salt Lake City, UT 84106

PARTNER **XTEAM**
RETAIL ADVISORS



WINCO ANCHORED PAD

Gentile St & I-15 | Layton, Utah 84041

DEMOGRAPHICS

	1 MILE	3 MILE	5 MILE
2025 POPULATION	15,543	91,971	166,769
2030 PROJECTED POPULATION	15,553	93,275	170,754
2025 HOUSEHOLDS	5,548	29,812	53,589
2025 AVG HH INCOME	\$114,567	\$139,153	\$140,700
2025 BUSINESSES	545	3,455	5,268
2025 DAYTIME POPULATION	4,418	27,938	41,682

CONCEPTUAL RENDERING
(SUBJECT TO CHANGE)



JOE MILLS
801.930.6755

jmill@legendcommercial.com

TANNER OLSON
801.930.6752

tolson@legendcommercial.com

801.930.6750
www.legendcommercial.com
2180 S 1300 E, Suite 240 | Salt Lake City, UT 84106

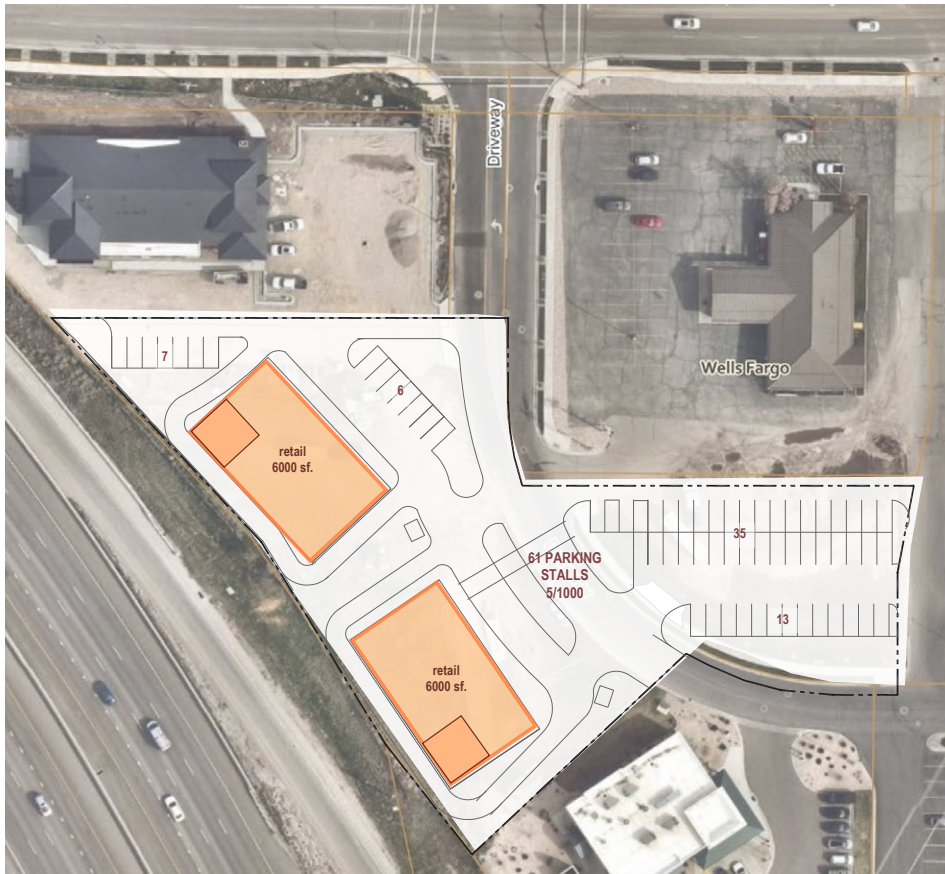
PARTNER **XTEAM**
RETAIL ADVISORS



WINCO ANCHORED PAD

Gentile St & I-15 | Layton, Utah 84041

CONCEPTUAL SITE PLANS (SUBJECT TO CHANGE)



PARKING CALCULATIONS
PARKING STALLS REQUIRED = 69
PARKING STALLS PROVIDED = 72



PARKING CALCULATIONS
PARKING STALLS REQUIRED = 64
PARKING STALLS PROVIDED = 64

JOE MILLS
801.930.6755

jmill@legendcommercial.com

TANNER OLSON
801.930.6752

tolson@legendcommercial.com

801.930.6750
www.legendcommercial.com
2180 S 1300 E, Suite 240 | Salt Lake City, UT 84106

PARTNER **XTEAM**
RETAIL ADVISORS

