



1920
MCKINNEY

TOP FLOOR WITH SIGNAGE RIGHTS NOW AVAILABLE

THE DETAILS

BUILDING

1920 McKinney
1920 McKinney Ave, Dallas, TX 75204

Class A office building is in a highly sought-after location on the corner of McKinney Avenue and Harwood Street.

YEAR BUILT

2016

AVAILABLE SPACE

12th Floor - 23,840 SF

PARKING

3:1,000 covered parking

100% covered, structured parking

Charges for parking include the following

- Reserved spaces- \$225.00/month + tax
- Unreserved Parking - \$100/month + tax

LEASING COMPANY

Stream Realty Partners
Ryan Evanich
214.267.0442
revanich@streamrealty.com

Marissa Parkin
214.560.2435
marissa.parkin@streamrealty.com

SECURITY

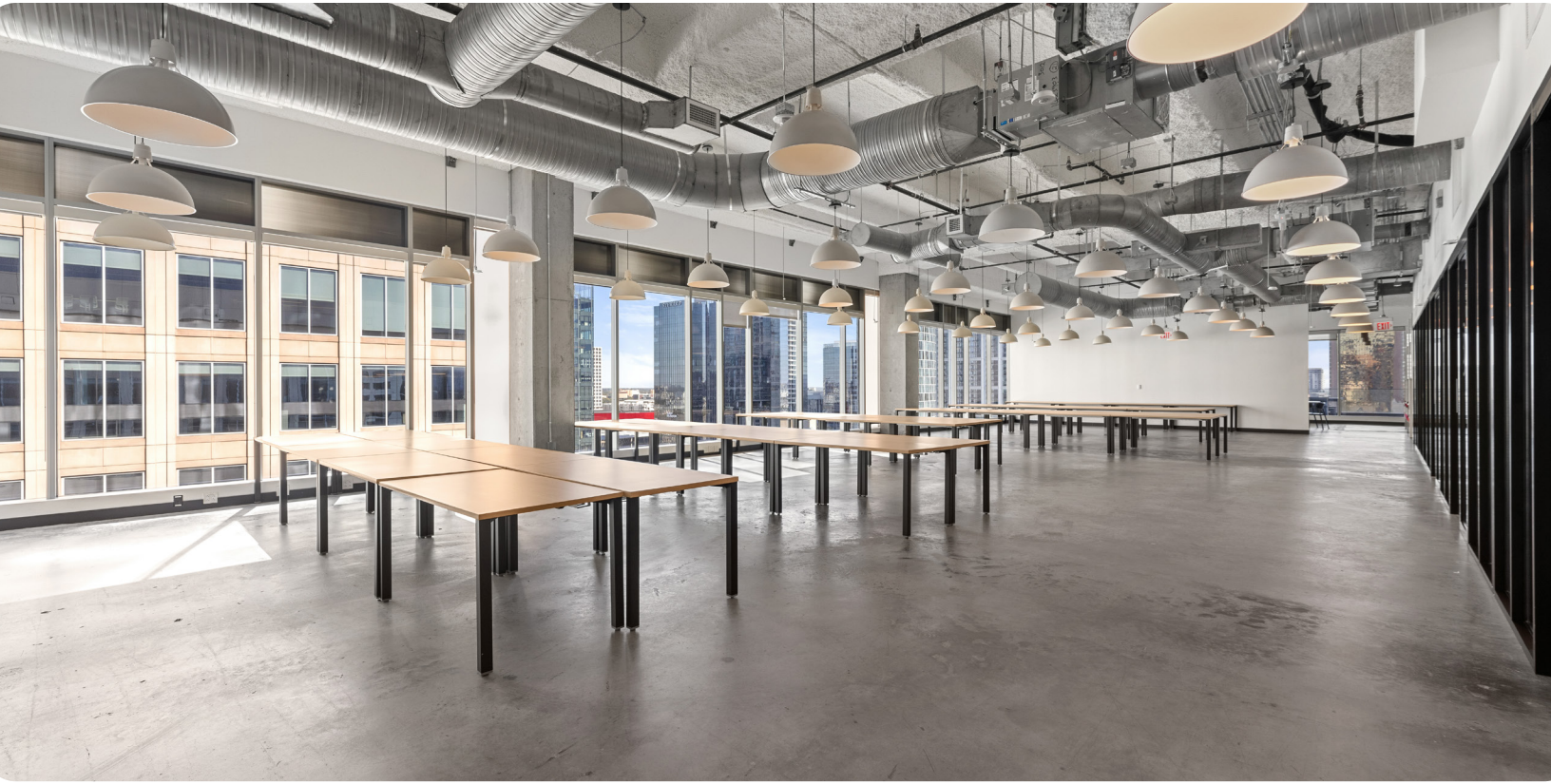
1920 McKinney offers on-site security on a 24-hour, 7-day a week basis.

OPERATING EXPENSES & ELECTRICITY

\$23.48/RSF OPEX
\$2.03/RSF Electric

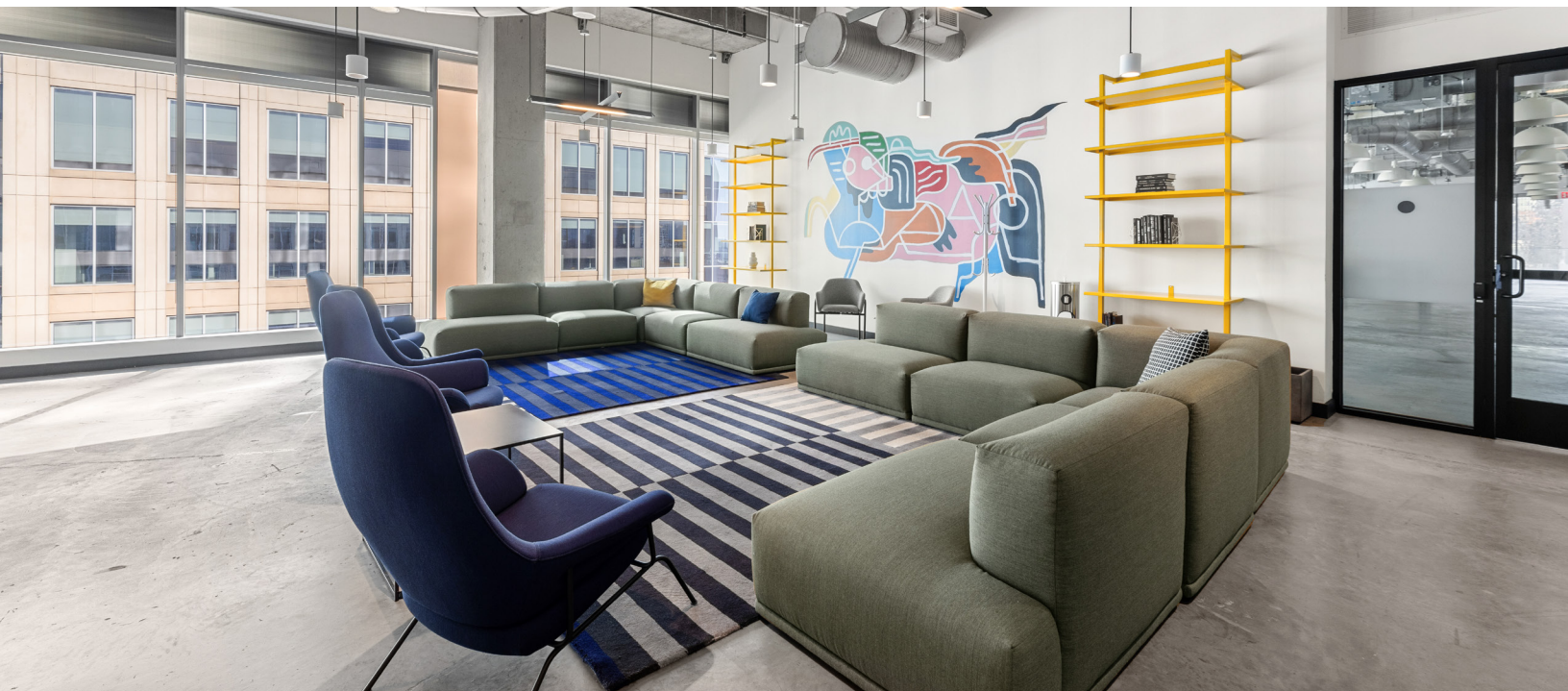


FLOOR 12 - 23,840 SF

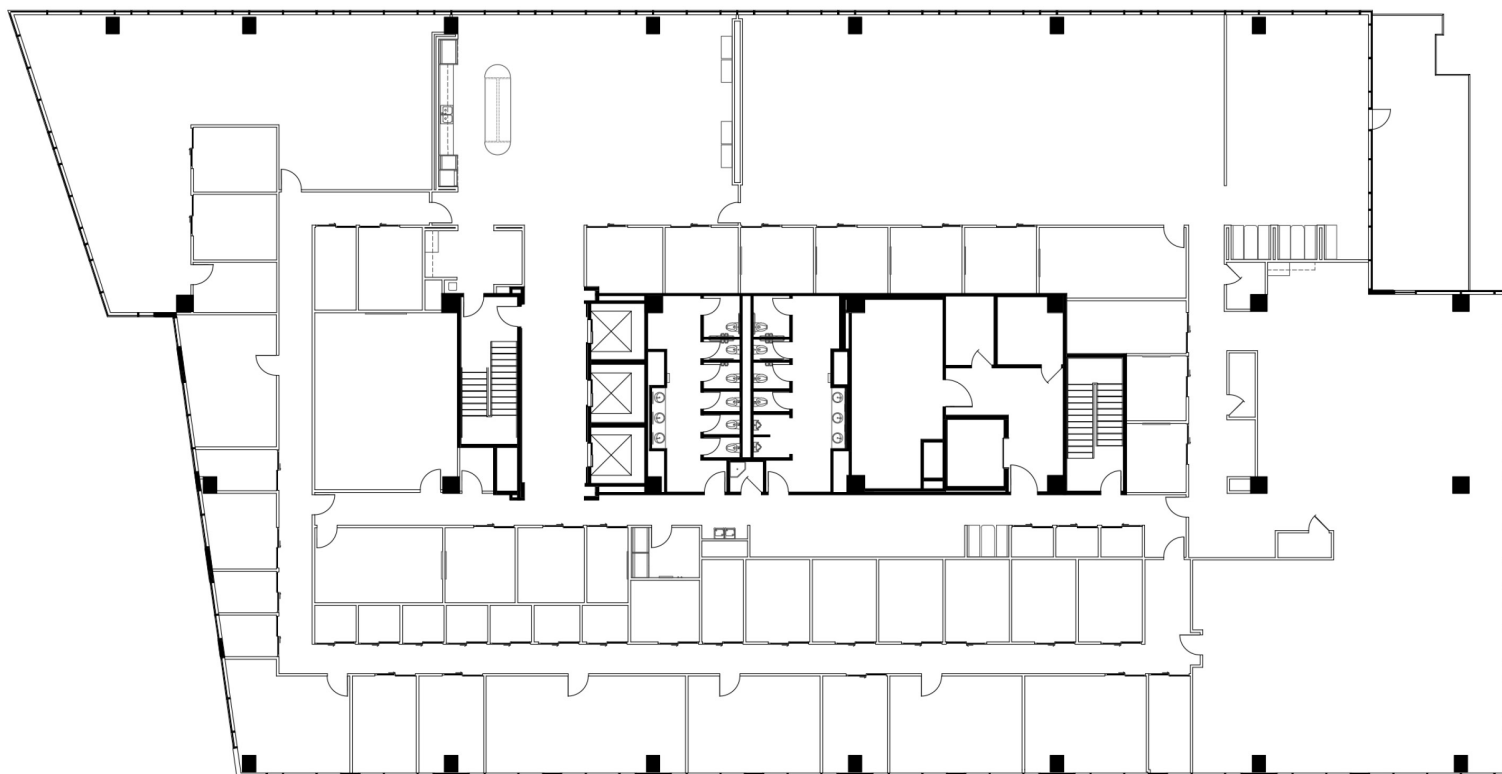


FLOOR 12 - 23,840 SF

1920
MCKINNEY



[SEE VIRTUAL TOUR](#)



FLOOR 12 - HYPOTHETICALS

OFFICE CONCENTRATED



OPEN OFFICE CONCENTRATED





1920 MCKINNEY

www.1920McKinneyUptown.com

FOR MORE INFORMATION, CONTACT:

Matt Wieser
mwieser@streamrealty.com
214.210.1368

Ryan Evanich
revanich@streamrealty.com
214.267.0442

Marissa Parkin
marissa.parkin@streamrealty.com
214.560.2435


STREAM

The logo for Stream Realty, featuring a white wavy line above the word "STREAM" in a bold, white, sans-serif font.