

## PROPERTY INFO:

- 16,000 Total Sq Ft
- 6,000 sq ft of office/showroom & 10,000 sq ft of warehouse
- Masonry Construction
- Fully Fire Sprinkled
- 1 Dock with Leveler
- 1 Drive-In Door
- 18 Ft Clear Height in Warehouse
- 32 Ft Column Spacing in Warehouse
- Heavy Power
- Lawn Sprinkler
- Site Size: 1.49 Acres
- TAX PIN: 02-20-107-009
- Built in 1995
- Monument Signage
- 28 Parking Spaces
- DUPAGE COUNTY
- Covington Corporate Center Industrial Park

## Lease Rate:

Subject to Offer

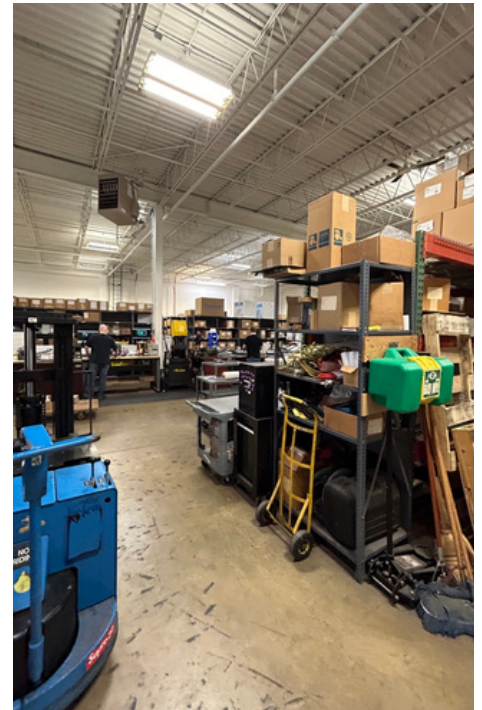
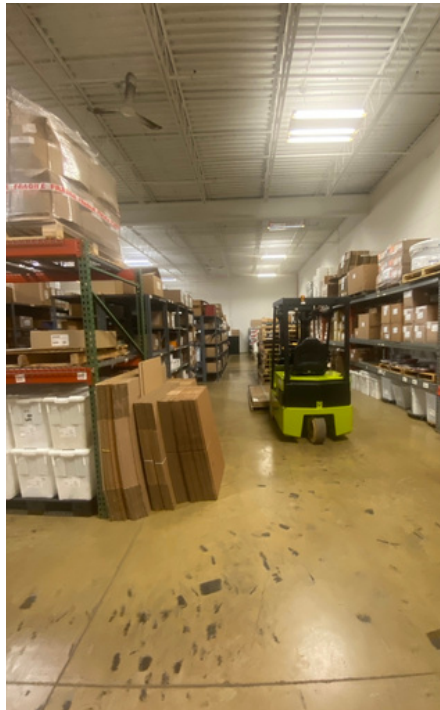
## Sale Price:

Subject to Offer

# 455 BRIGHTON DRIVE

BLOOMINGDALE, IL

## AVAILABLE FOR SALE OR LEASE



**DISCLAIMER:** THIS MARKETING PACKAGE IS PROVIDED FOR INFORMATIONAL PURPOSES ONLY AND SHALL NOT BE CONSIDERED A REPRESENTATION OR WARRANTY OF ANY KIND, INCLUDING BUT NOT LIMITED TO AN EXPRESS OR IMPLIED WARRANTY. NO WARRANTY OR REPRESENTATION IS MADE AS TO THE ACCURACY OF THE INFORMATION FURNISHED HEREIN REGARDING THE PROPERTY FOR SALE OR FOR RENT, AND THE USER IS CAUTIONED THAT THE MARKETING PACKAGE MAY CONTAIN ERRORS OR OMISSIONS, AND INFORMATION MAY BE SUBJECT TO CHANGE INCLUDING CHANGE OF PRICE, RENTAL OR OTHER CONDITIONS PRIOR TO SALE OR LEASE, WITH OR WITHOUT NOTICE. THE RECIPIENT OF THIS MARKETING PACKAGE WAIVES AND DISCLAIMS ANY AND ALL CLAIMS AGAINST, AND LIABILITY OF THE SELLER OR ITS REPRESENTATIVES OR AGENTS WITH RESPECT TO THIS MARKETING PACKAGE AND THE INFORMATION CONTAINED IN IT. ALL INFORMATION SHALL BE INDEPENDENTLY VERIFIED BY THE RECIPIENT OF THIS MARKETING PACKAGE.

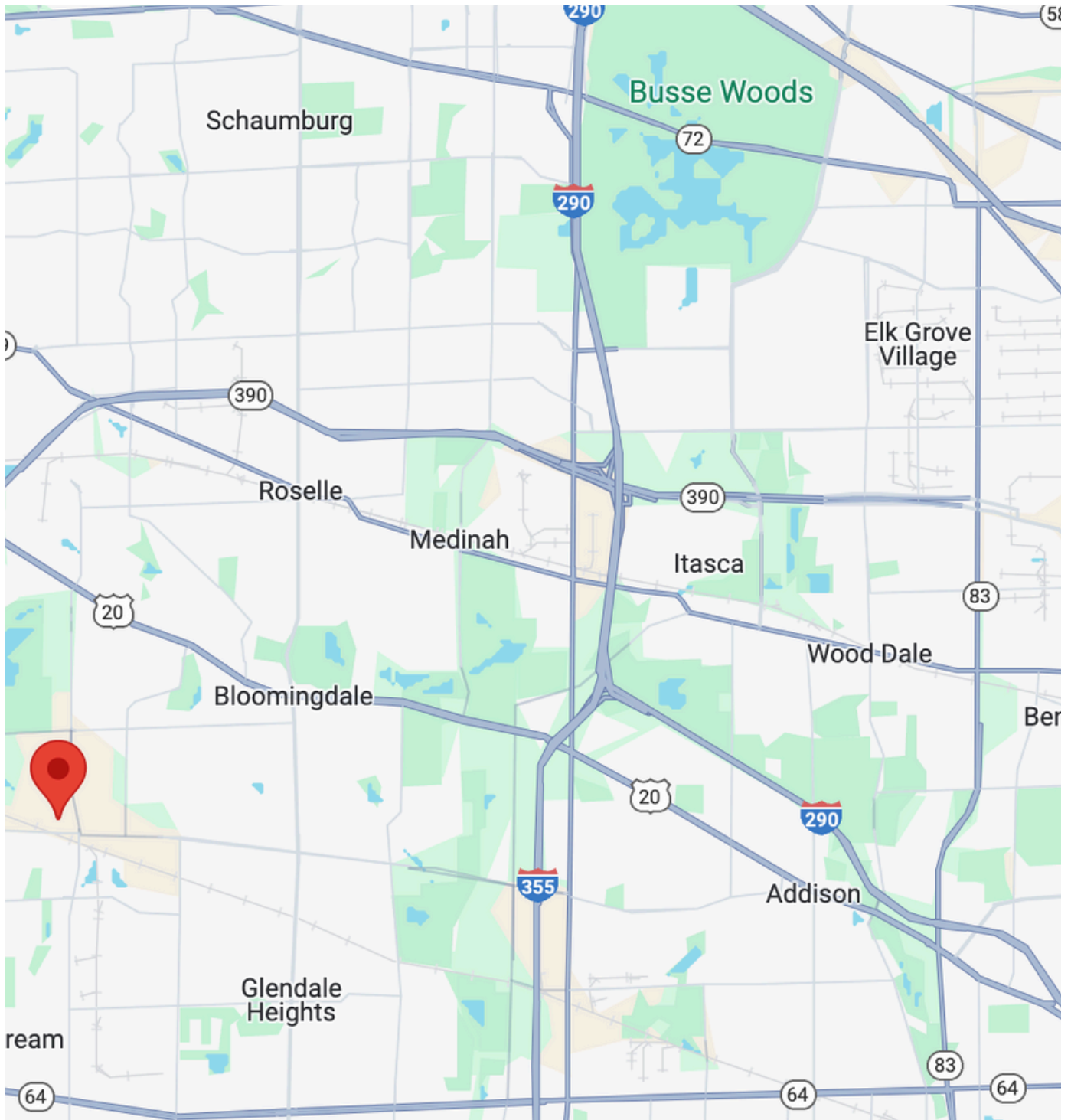
**455 BRIGHTON DRIVE**  
**BLOOMINGDALE, IL**



**DISCLAIMER:** THIS MARKETING PACKAGE IS PROVIDED FOR INFORMATIONAL PURPOSES ONLY AND SHALL NOT BE CONSIDERED A REPRESENTATION OR WARRANTY OF ANY KIND, INCLUDING BUT NOT LIMITED TO AN EXPRESS OR IMPLIED WARRANTY. NO WARRANTY OR REPRESENTATION IS MADE AS TO THE ACCURACY OF THE INFORMATION FURNISHED HEREIN REGARDING THE PROPERTY FOR SALE OR FOR RENT, AND THE USER IS CAUTIONED THAT THE MARKETING PACKAGE MAY CONTAIN ERRORS OR OMISSIONS, AND INFORMATION MAY BE SUBJECT TO CHANGE INCLUDING CHANGE OF PRICE, RENTAL OR OTHER CONDITIONS PRIOR TO SALE OR LEASE, WITH OR WITHOUT NOTICE. THE RECIPIENT OF THIS MARKETING PACKAGE WAIVES AND DISCLAIMS ANY AND ALL CLAIMS AGAINST, AND LIABILITY OF THE SELLER OR ITS REPRESENTATIVES OR AGENTS WITH RESPECT TO THIS MARKETING PACKAGE AND THE INFORMATION CONTAINED IN IT. ALL INFORMATION SHALL BE INDEPENDENTLY VERIFIED BY THE RECIPIENT OF THIS MARKETING PACKAGE.

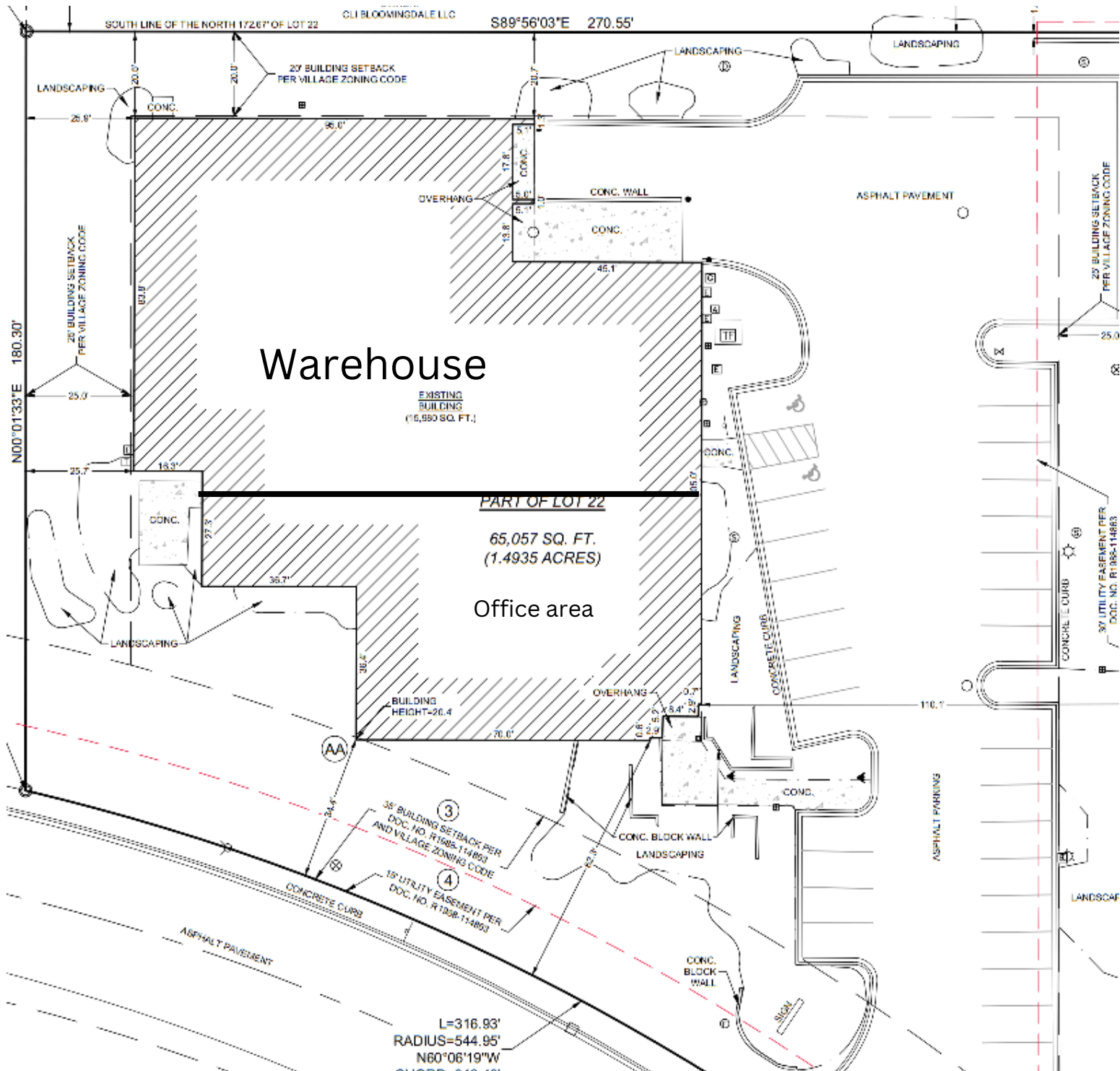
# 455 BRIGHTON DRIVE

## BLOOMINGDALE, IL



**DISCLAIMER:** THIS MARKETING PACKAGE IS PROVIDED FOR INFORMATIONAL PURPOSES ONLY AND SHALL NOT BE CONSIDERED A REPRESENTATION OR WARRANTY OF ANY KIND, INCLUDING BUT NOT LIMITED TO AN EXPRESS OR IMPLIED WARRANTY. NO WARRANTY OR REPRESENTATION IS MADE AS TO THE ACCURACY OF THE INFORMATION FURNISHED HEREIN REGARDING THE PROPERTY FOR SALE OR FOR RENT, AND THE USER IS CAUTIONED THAT THE MARKETING PACKAGE MAY CONTAIN ERRORS OR OMISSIONS, AND INFORMATION MAY BE SUBJECT TO CHANGE INCLUDING CHANGE OF PRICE, RENTAL OR OTHER CONDITIONS PRIOR TO SALE OR LEASE, WITH OR WITHOUT NOTICE. THE RECIPIENT OF THIS MARKETING PACKAGE WAIVES AND DISCLAIMS ANY AND ALL CLAIMS AGAINST, AND LIABILITY OF THE SELLER OR ITS REPRESENTATIVES OR AGENTS WITH RESPECT TO THIS MARKETING PACKAGE AND THE INFORMATION CONTAINED IN IT. ALL INFORMATION SHALL BE INDEPENDENTLY VERIFIED BY THE RECIPIENT OF THIS MARKETING PACKAGE.

# 455 BRIGHTON DRIVE BLOOMINGDALE, IL



**DISCLAIMER:** THIS MARKETING PACKAGE IS PROVIDED FOR INFORMATIONAL PURPOSES ONLY AND SHALL NOT BE CONSIDERED A REPRESENTATION OR WARRANTY OF ANY KIND, INCLUDING BUT NOT LIMITED TO AN EXPRESS OR IMPLIED WARRANTY. NO WARRANTY OR REPRESENTATION IS MADE AS TO THE ACCURACY OF THE INFORMATION FURNISHED HEREIN REGARDING THE PROPERTY FOR SALE OR FOR RENT, AND THE USER IS CAUTIONED THAT THE MARKETING PACKAGE MAY CONTAIN ERRORS OR OMISSIONS, AND INFORMATION MAY BE SUBJECT TO CHANGE INCLUDING CHANGE OF PRICE, RENTAL OR OTHER CONDITIONS PRIOR TO SALE OR LEASE, WITH OR WITHOUT NOTICE. THE RECIPIENT OF THIS MARKETING PACKAGE WAIVES AND DISCLAIMS ANY AND ALL CLAIMS AGAINST, AND LIABILITY OF THE SELLER OR ITS REPRESENTATIVES OR AGENTS WITH RESPECT TO THIS MARKETING PACKAGE AND THE INFORMATION CONTAINED IN IT. ALL INFORMATION SHALL BE INDEPENDENTLY VERIFIED BY THE RECIPIENT OF THIS MARKETING PACKAGE.

**455 BRIGHTON DRIVE**  
BLOOMINGDALE, IL

**CONTACTS:**

JASON AMRANI  
MANAGER

NLM HOLDINGS 8 LLC  
(414) 507-9700  
JASON@CPIWI.COM

THOMAS MCCROSSIN  
MANAGER

NLM HOLDINGS 8 LLC  
(414) 322-4717  
TOM@NEWLANEMANAGEMENT.COM

**DISCLAIMER:** THIS MARKETING PACKAGE IS PROVIDED FOR INFORMATIONAL PURPOSES ONLY AND SHALL NOT BE CONSIDERED A REPRESENTATION OR WARRANTY OF ANY KIND, INCLUDING BUT NOT LIMITED TO AN EXPRESS OR IMPLIED WARRANTY. NO WARRANTY OR REPRESENTATION IS MADE AS TO THE ACCURACY OF THE INFORMATION FURNISHED HEREIN REGARDING THE PROPERTY FOR SALE OR FOR RENT, AND THE USER IS CAUTIONED THAT THE MARKETING PACKAGE MAY CONTAIN ERRORS OR OMISSIONS, AND INFORMATION MAY BE SUBJECT TO CHANGE INCLUDING CHANGE OF PRICE, RENTAL OR OTHER CONDITIONS PRIOR TO SALE OR LEASE, WITH OR WITHOUT NOTICE. THE RECIPIENT OF THIS MARKETING PACKAGE WAIVES AND DISCLAIMS ANY AND ALL CLAIMS AGAINST, AND LIABILITY OF THE SELLER OR ITS REPRESENTATIVES OR AGENTS WITH RESPECT TO THIS MARKETING PACKAGE AND THE INFORMATION CONTAINED IN IT. ALL INFORMATION SHALL BE INDEPENDENTLY VERIFIED BY THE RECIPIENT OF THIS MARKETING PACKAGE.