

FOR SALE OR LEASE



# 11,550 SF Industrial Building near Downtown LA

341 West 31<sup>st</sup> Street,  
Los Angeles, CA 90007

## Building Size

11,550 SF

## Lot Size

20,976 SF (0.48 Acres)

## Ceiling Height

18 Ft.

## Year Built

1982

## APN

5122-018-031

## Asking Sale Price

Contact Broker

## Asking Rent

\$1.40 PSF MG

## Property Highlights

- 28 Parking Spaces
- M1-2 Zoning
- 1 Story
- 2 Total Drive-Ins
- 400a/240v 3p 3w
- Qualified in Opportunity Zone
- Walk Score (84), Transit Score (82)

For information, please contact:

### Brent Koo

Sr. Managing Director

t 213-503-0606

[brent.koo@nmrk.com](mailto:brent.koo@nmrk.com)

CA RE Lic. #01915382

### Lex Yoo

Sr. Managing Director

t 213-537-9691

[lex.yoo@nmrk.com](mailto:lex.yoo@nmrk.com)

CA RE Lic. #01879695

555 South Flower Street, Suite 3550

Los Angeles, CA 90071



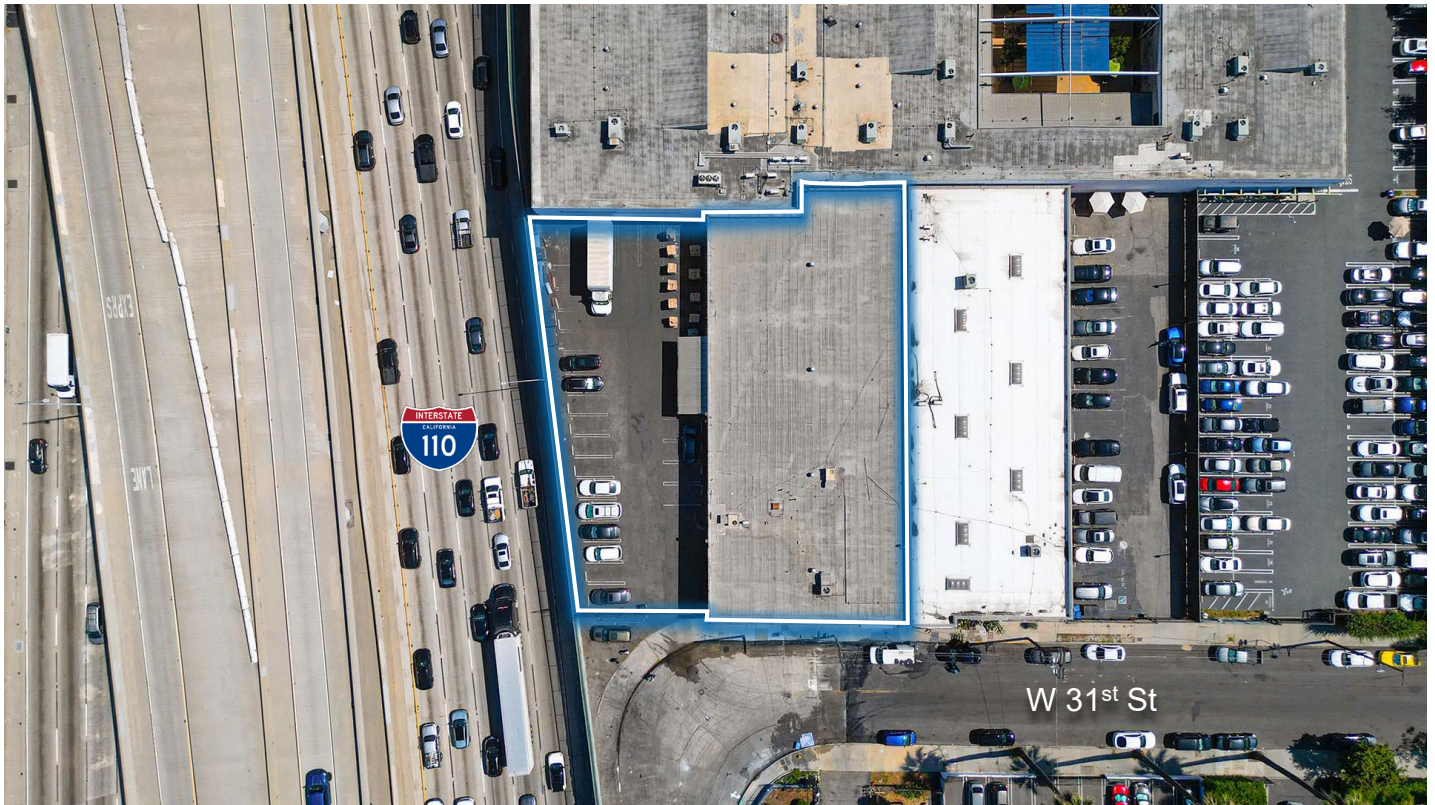
[nmrk.com](https://nmrk.com)

# NEWMARK

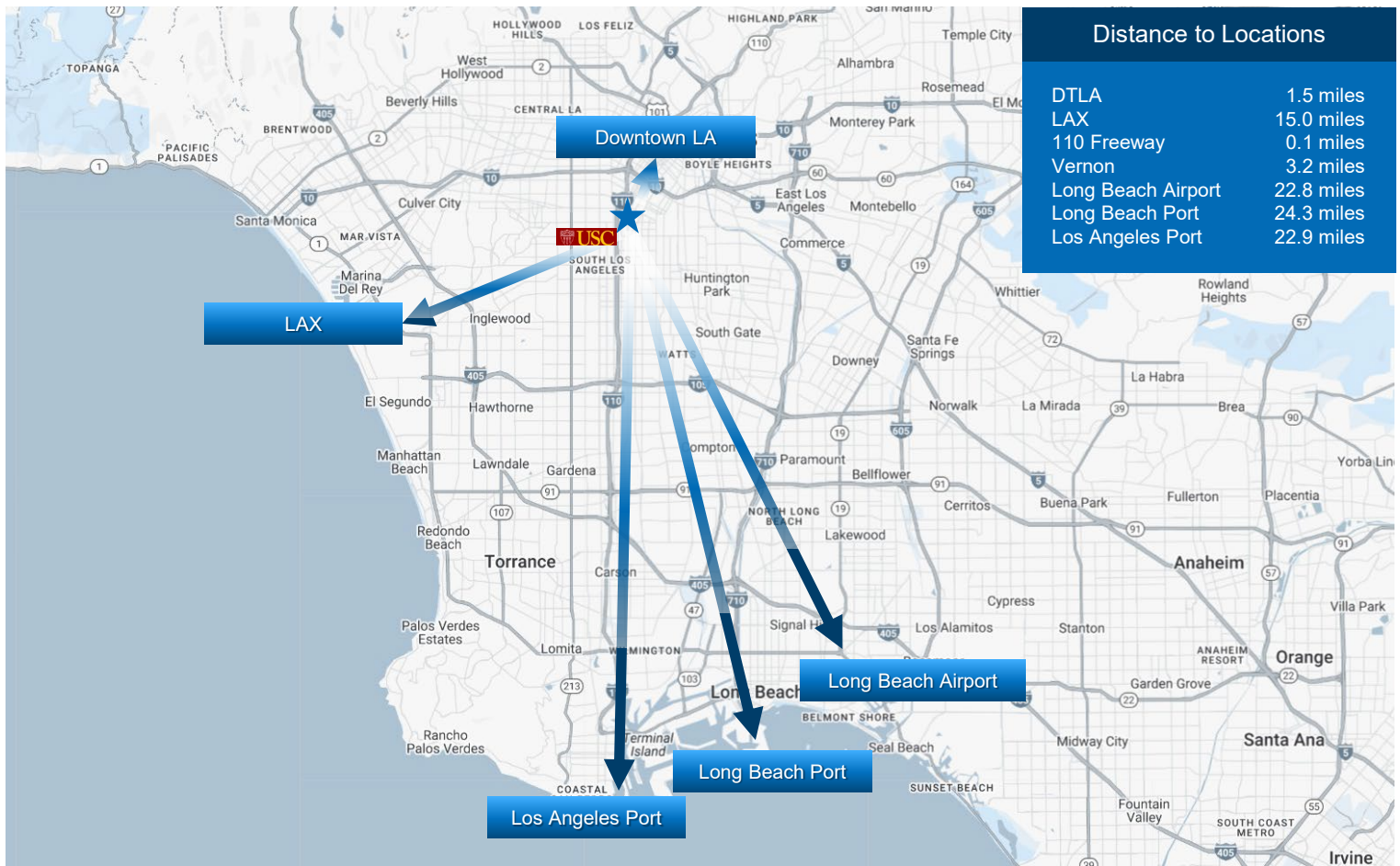
Corporate License #01355491

The information contained herein has been obtained from sources deemed reliable but has not been verified and no guarantee, warranty or representation, either express or implied, is made with respect to such information. Terms of sale or lease and availability are subject to change or withdrawal without notice.









	1 Mile	3 Miles
Population	48,817	542,367
Average Age	33	37
Total Households	12,827	183,796
# of Persons per HH	3.8	3
Average HH Income	\$59,348	\$72,172
Average House Value	\$936,143	\$875,305
Per Capita Income	\$15,617	\$24,057
Population Hispanic	28,669	355,882
Population Non-Hispanic	20,148	186,485