

# Columbia Metropolitan Airport

# CAE



**NAI**  
**Columbia**

Aviation | Logistics | Flex | Research & Development | Industrial | Office | Service

# Table of Contents

3

The Midlands

4

Why **CAE**?

5

Future Progress Aerial

6

Site Summary Aerial

7

Sites for Sale

9

Air Cargo Building for Lease

## Contacts:



**John Gregory, PE, CCIM**

O: 803.744.9896

C: 803.873.1883

[jegregory@naicolumbia.com](mailto:jegregory@naicolumbia.com)



**Bill Lamar**

O: 803.744.9818

C: 803.960.6090

[blamar@naicolumbia.com](mailto:blamar@naicolumbia.com)



**Tristan Lee**

O: 803.744.9833

C: 336.870.8928

[tlee@naicolumbia.com](mailto:tlee@naicolumbia.com)



# The Midlands

CENTRAL SOUTH CAROLINA  
ECONOMIC GROWTH SINCE 2022

**\$4.8 BILLION**

MORE THAN 8,200 NEW JOBS



SOUTH CAROLINA RANKS AS ONE OF THE TOP FIVE STATE  
TO DO BUSINESS IN THE NATION ACCORDING TO AREA  
DEVELOPMENT MAGAZINE

AGGRESSIVE INCENTIVES POSITION INDUSTRIES FOR GROWTH  
AND CREATE AN EXCEPTIONAL ECONOMIC CLIMATE THAT  
MAXIMIZES RETURN ON INVESTMENT.



**SOUTH CAROLINA RANKED #1 IN GROWTH - 2024**  
ACCORDING TO THE **U-HAUL** GROWTH INDEX,  
SOUTH CAROLINA RANKED #1 IN GROWTH FOR  
2024. THIS MARKS THE FIRST TIME SC HAS TOPPED  
THE LIST, JUMPING 3 SPOTS FROM 2023.

CAPITAL INVESTMENT IN EV  
SINCE 2017 (SC)

**\$9.6 BILLION**



SC RANKS **#1** IN  
PASSENGER VEHICLE EXPORTS  
IN THE US

## The Newcomers



\$2 BILLION INVESTMENT  
±4,000 NEW JOBS  
EV MANUFACTURER



\$99.6 MILLION INVESTMENT  
±94 NEW JOBS  
BEVERAGE PACKAGING



\$400 MILLION INVESTMENT  
±300 NEW JOBS  
4<sup>TH</sup> LARGEST BREWER IN THE US



\$323 MILLION  
±300 NEW JOBS  
EV BATTERY MATERIALS MANUF.

# Why **CAE** ?

TOTAL CARGO  
**320.8 MILLION**  
SINCE 2022



PASSENGER TRAFFIC  
**3.6 MILLION**  
SINCE 2022

NOW PROVIDING 26+ DAILY FLIGHTS WITH NONSTOP SERVICE TO 12 MAJOR AIRPORTS IN 11 CITIES INCLUDING ATLANTA, CHARLOTTE, CHICAGO, DALLAS/FORT WORTH, NEW YORK CITY (LGA), PHILADELPHIA, WASHINGTON, D.C. (DULLES AND REAGAN NATIONAL) AND BEGINNING THIS SUMMER SERVICE ON ALLEGiant TO ORLANDO/SANFORD AND FORT LAUDERDALE, AS WELL AS SERVICE ON SPIRIT AIRLINES TO NEWARK, ORLANDO AND FORT LAUDERDALE, COLUMBIA METROPOLITAN AIRPORT (CAE), A TWO-TIME GLOBAL BIORISK ADVISORY COUNCIL® (GBAC) STAR™ ACCREDITED FACILITY, CONTINUES TO BE A MAJOR ECONOMIC DRIVER FOR THE MIDLANDS REGION. WELCOMING OVER 1.3+ MILLION PASSENGERS IN 2024, CAE IS SERVED BY AMERICAN AIRLINES, DELTA AIR LINES, UNITED AIRLINES, \*ALLEGiant AND \*SPIRIT AIRLINES AND SERVES AS A REGIONAL CARGO HUB FOR UPS AND SERVED BY CARGO CARRIER, FEDEX. (\*ALLEGiant AND SPIRIT AIRLINES WILL BEGIN SERVE AT CAE IN MAY AND JUNE OF 2025).



CAE'S AIRLINE PARTNERS OFFER OVER 26+ NONSTOP FLIGHTS TO 12 MAJOR AIRPORTS IN 11 CITIES. THE CONVENIENCE OF CAE IS THAT YOU CAN GET ALMOST ANYWHERE IN THE WORLD WITH JUST ONE STOP.

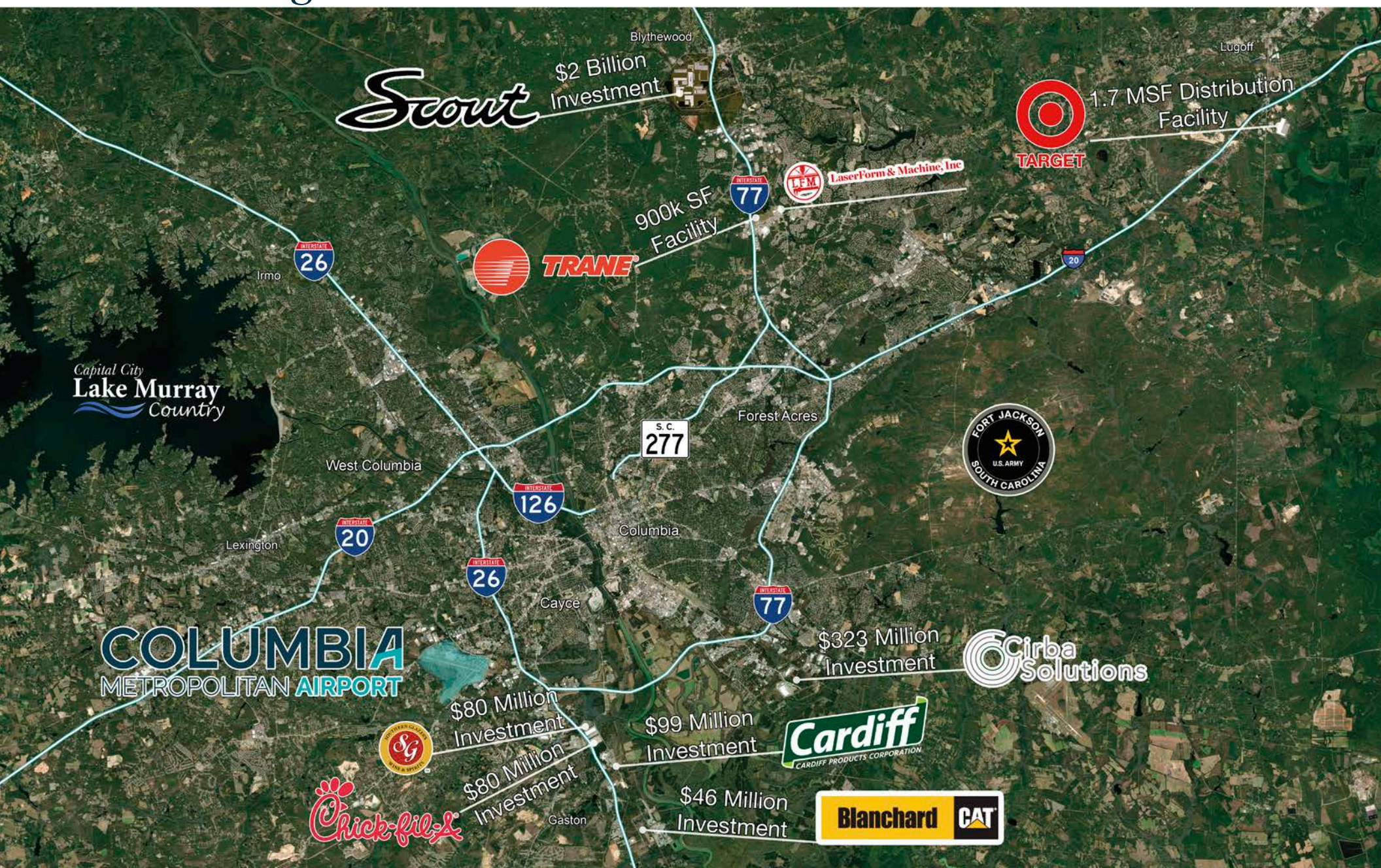
## Airline Partners



Source: Columbia Metropolitan Airport

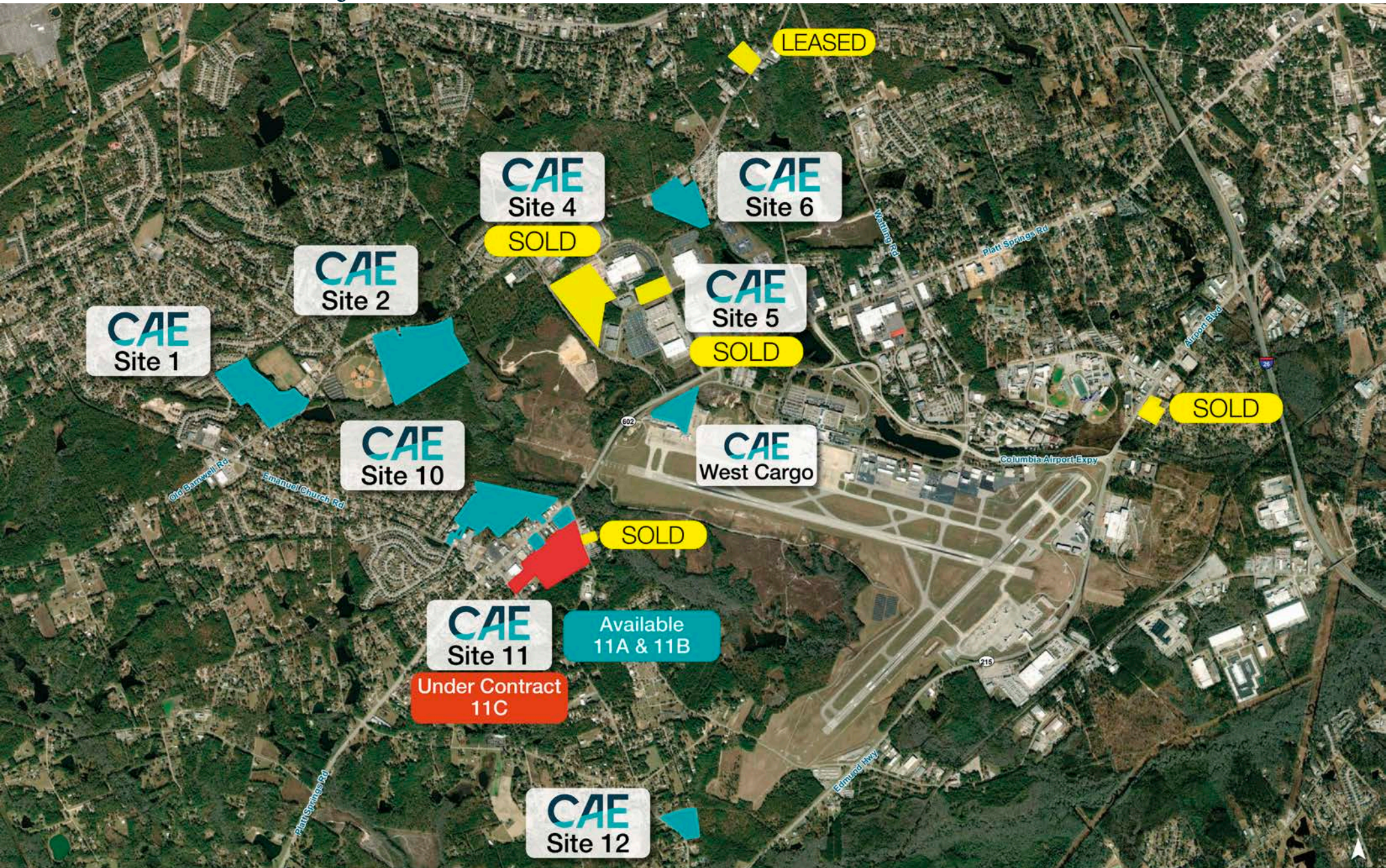


# Future Progress Aerial





# Site Summary Aerial





# Sites Available

**1** **\$232,500**

±33.53 Acres Total | ±13 Developable Acres



**2** **\$1,789,000**

±52.35 Acres Total | ±30 Developable Acres



**6** **\$145,000**

±17.00 Acres Total | ±3 Developable Acres



**10** **\$1,329,900**

±33.34 Acres Total | ±21 Developable Acres





# Sites Available

**11A** \$300,000

±1.58 Acres Total

**11B** \$689,000

±2.64 Acres Total

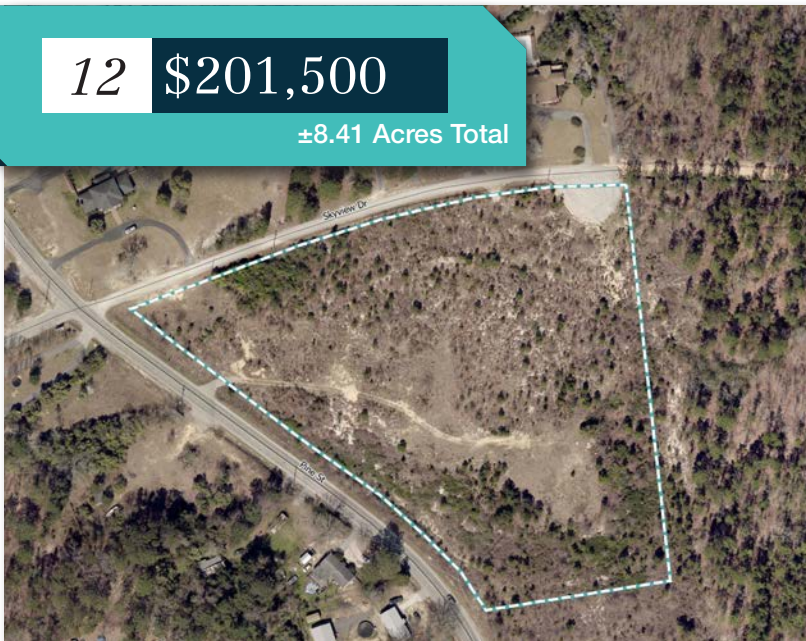
**11C** \$1,156,800

±28.84 Acres Total



**12** \$201,500

±8.41 Acres Total





# Air Cargo Building

- $\pm 30,455$  SF FOR LEASE
- SUITES FROM  $\pm 2,150$  SF -  $\pm 30,455$  SF
- DOCK HIGH DOORS - 17
- DRIVE IN DOORS - 13 (AIRSIDE)
- CLEAR HEIGHT -  $\pm 15'$  -  $\pm 18' 11''$
- FULLY CONDITIONED WAREHOUSE
- AIR CARGO RAMP ACCESS





## Contact

John Gregory, PE, CCIM



O: 803.744.9896  
C: 803.873.1883



jegregory@naicolumbia.com

Bill Lamar



O: 803.744.9818  
C: 803.960.6090



blamar@naicolumbia.com

Tristan Lee



O: 803.744.9833  
C: 336.870.8928



tlee@naicolumbia.com

