

\$350,000
PRICE REDUCTION



EXPANSIVE INDUSTRIAL

FOR SALE

701 ORIOLE DRIVE
Hendersonville, NC 28792



OFFERING SUMMARY

Sale Price	\$3,973,871
Lot Size	4.13 Acres
Building Size	72,785 SF



PROPERTY SUMMARY



VIDEO

PROPERTY DESCRIPTION

Introducing an exceptional opportunity for an adaptive re-use building for investors in the Hendersonville area. This expansive masonry, concrete and steel 72,785 SF building is a fortress. With light industrial zoning the property presents versatility and potential for a range of office and commercial uses. Its strategic location provides convenient access to key transportation routes and local amenities, enhancing its appeal to prospective tenants. Don't miss the chance to capitalize on this well-positioned property in the thriving Hendersonville area, where the potential for long-term returns awaits.

PROPERTY HIGHLIGHTS

- Expansive 48,120 SF building w/ 24,664 SF dry basement
- Constructed in 1940 & well maintained
- Zoned Industrial
- Prime location in Hendersonville connecting to Ecusta Trail
- Versatile for office and commercial use
- Ideal for adaptive re-use investors



GALLERY



MAIN FLOOR



FREIGHT ELEVATOR



PRODUCTION ROOM



CORRIDOR



GALLERY



OFFICE SPACE



LOBBY



BREAKROOM



CONFERENCE ROOM



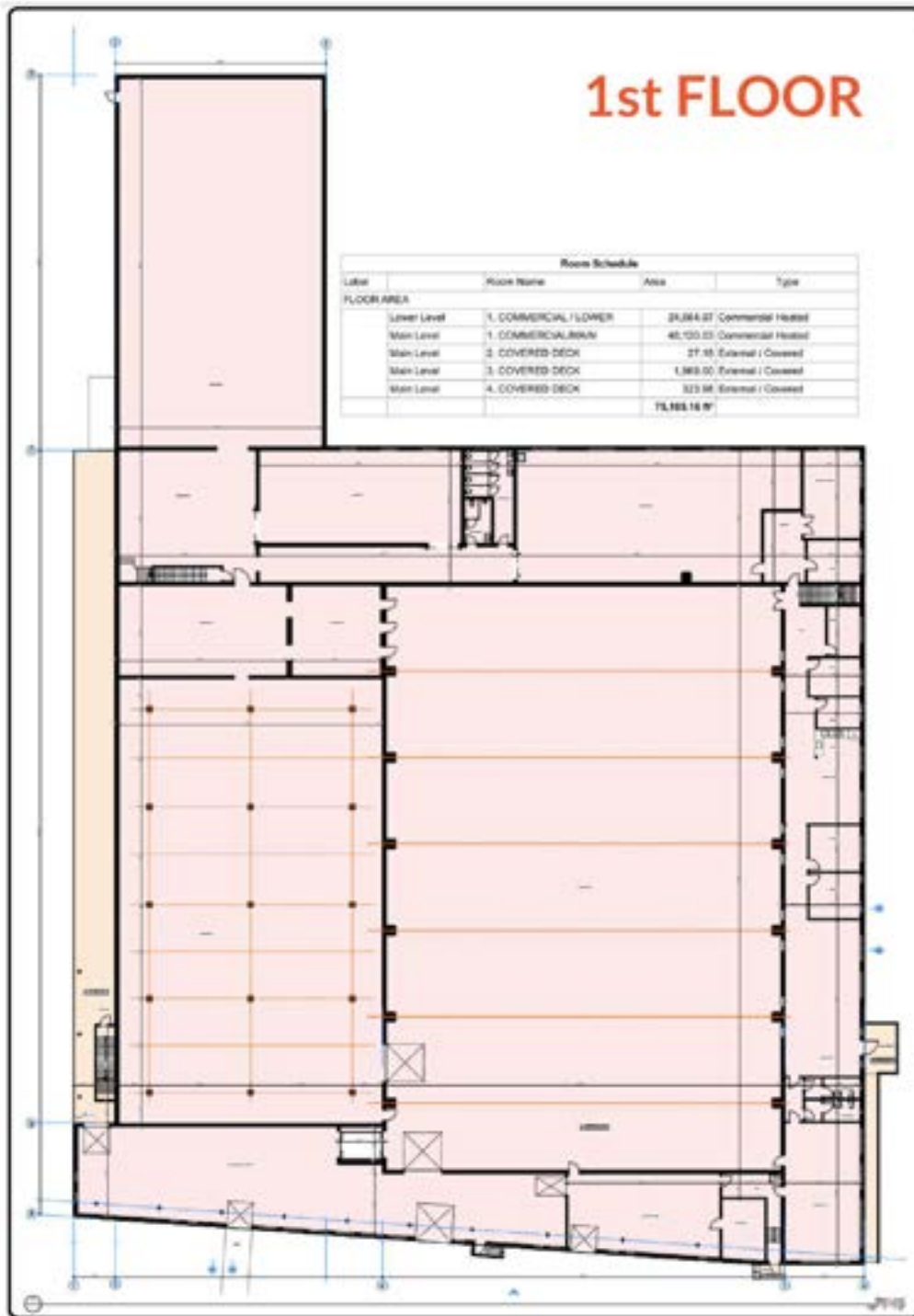
KITCHEN



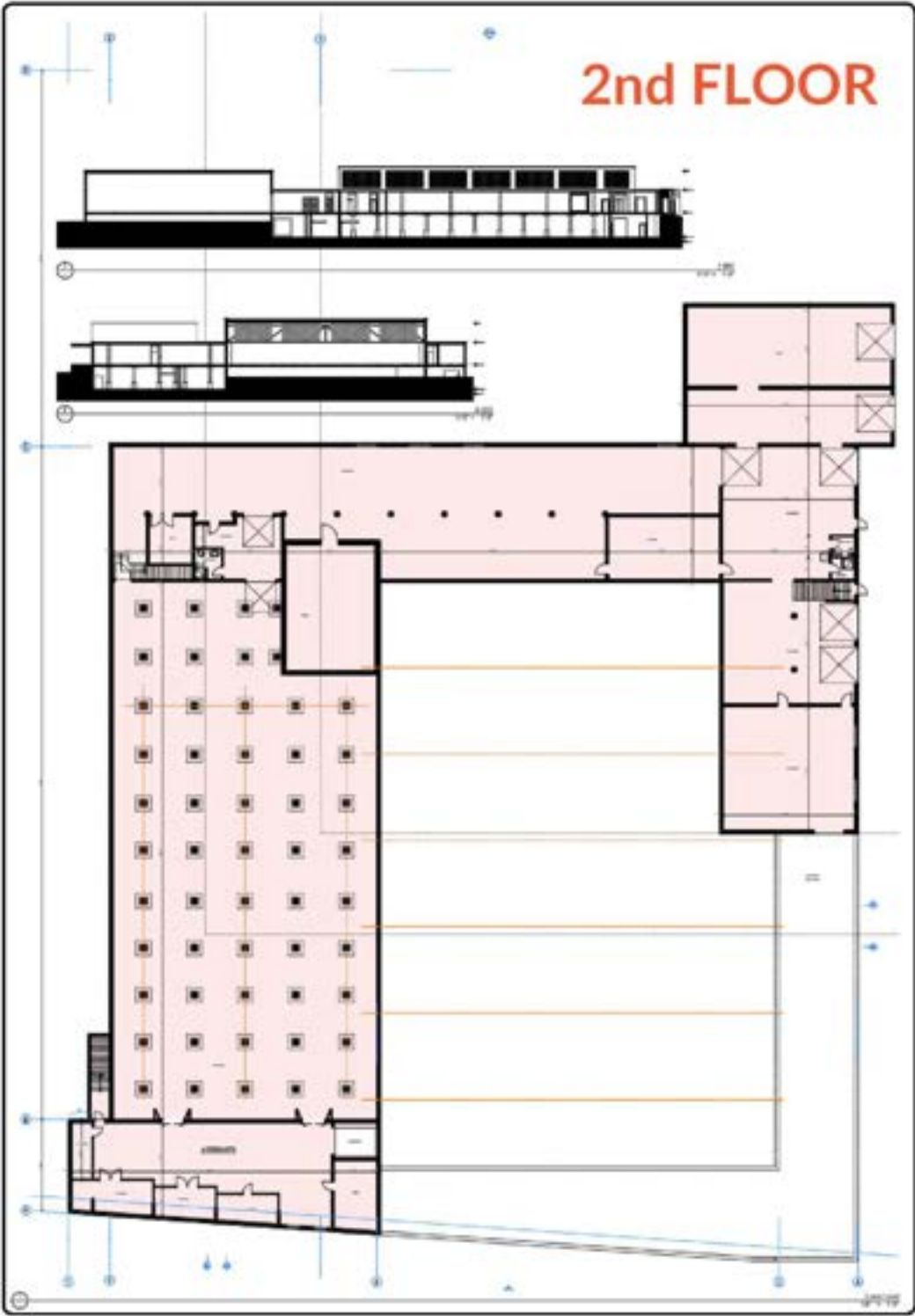
AREA SNAPSHOT



FLOOR PLANS



FLOOR PLANS





WHITNEY
COMMERCIAL
REAL ESTATE SERVICES

Brokerage • Management • Construction