

PARK BUILDING

6400 Goldsboro Road
Bethesda, MD 20817

TRIUMPH



Leasing Information:
301.304.8300

Paul "Rocky" Kern
301.304.8399
pkern@lpc.com

Richard Coppola
301.304.8405
rcoppola@lpc.com

Lincoln

Lincoln Property Company
1101 Wootton Pkwy
Rockville, MD 20854

www.lpc.com

PARK BUILDING

Office For Lease

6400 Goldsboro Road | Bethesda, MD 20817



Property Highlights

- Easy access to I-495
- Free parking (2.40 / 1,000 SF)

Availabilities

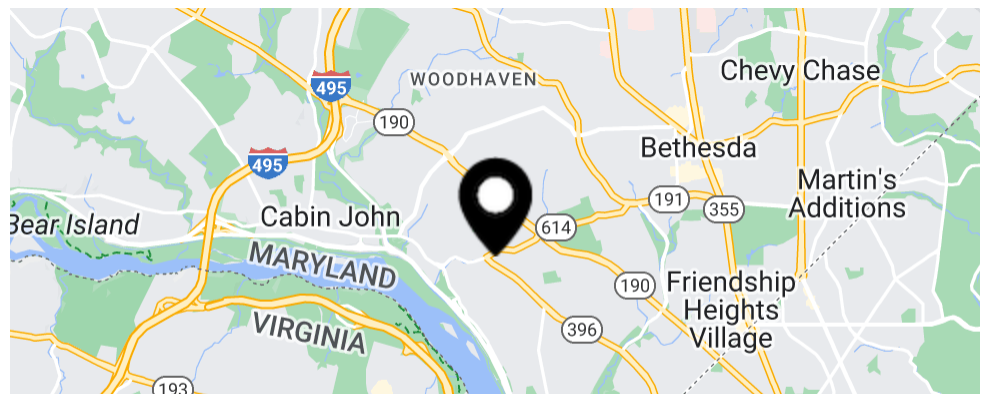
SF

Date Available

Suite 200*	3,000 - 9,720 SF	Immediately
Suite 205*	1,046 SF	Immediately
Suite 220**	1,074 SF	Immediately
Suite 230**	875 SF	Immediately
Suite 500	15,700 SF	Immediately

*Contiguous 10,766 SF Block

**Contiguous 1,949 SF Block



Paul "Rocky" Kern **Richard Coppola**

301.304.8399
pkern@lpc.com

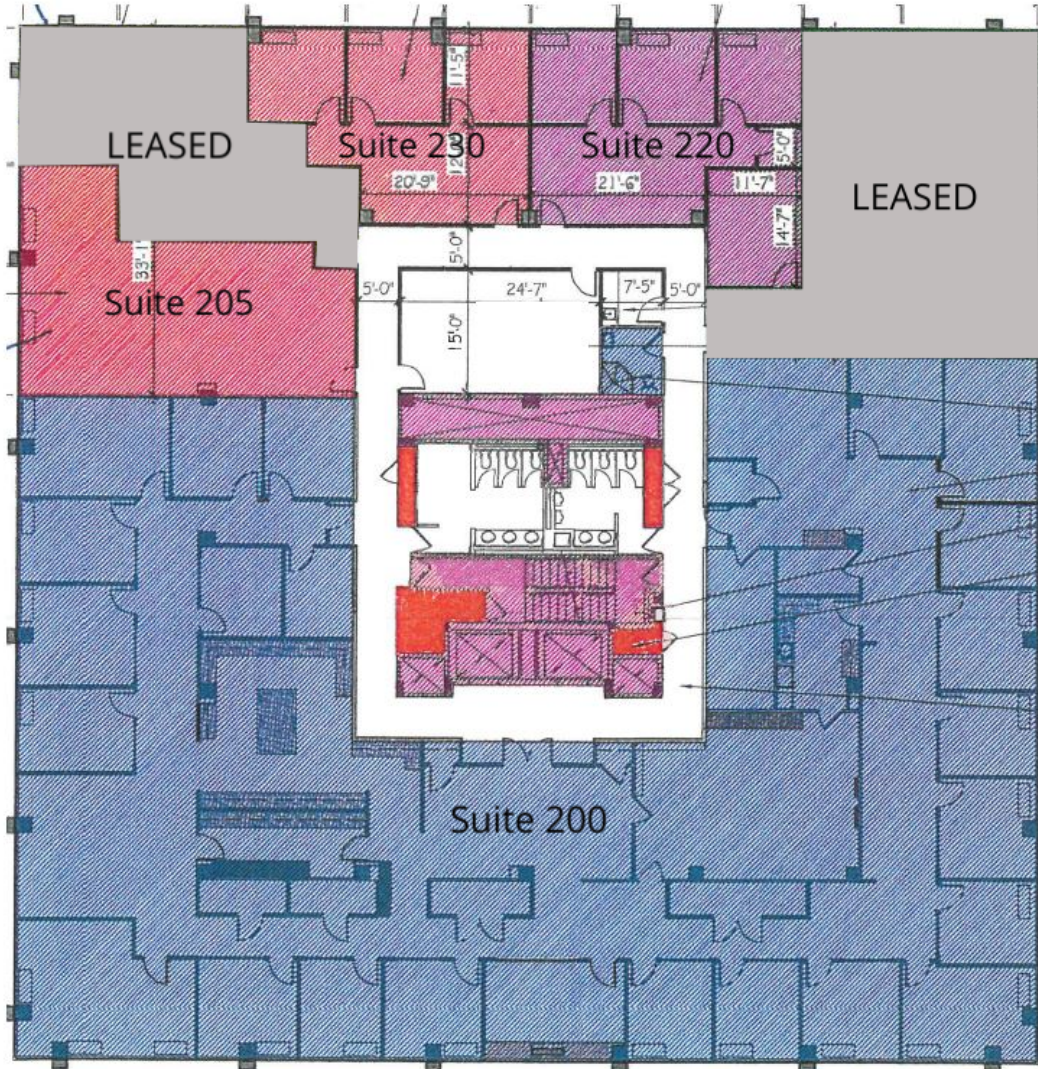
301.304.8405
rcoppola@lpc.com

Lincoln

PARK BUILDING

2nd Floor

6400 Goldsboro Road | Bethesda, MD 20817



Suite	Size	Description
Suite 200*	3,000 - 9,720 SF	Available immediately. Contiguous 10,766 SF Block.
Suite 205*	1,046 SF	Available Immediately. Contiguous 10,766 SF Block.
Suite 220**	1,074 SF	Available Immediately. Contiguous 1,949 SF Block.
Suite 230**	875 SF	Available Immediately. Contiguous 1,949 SF Block.

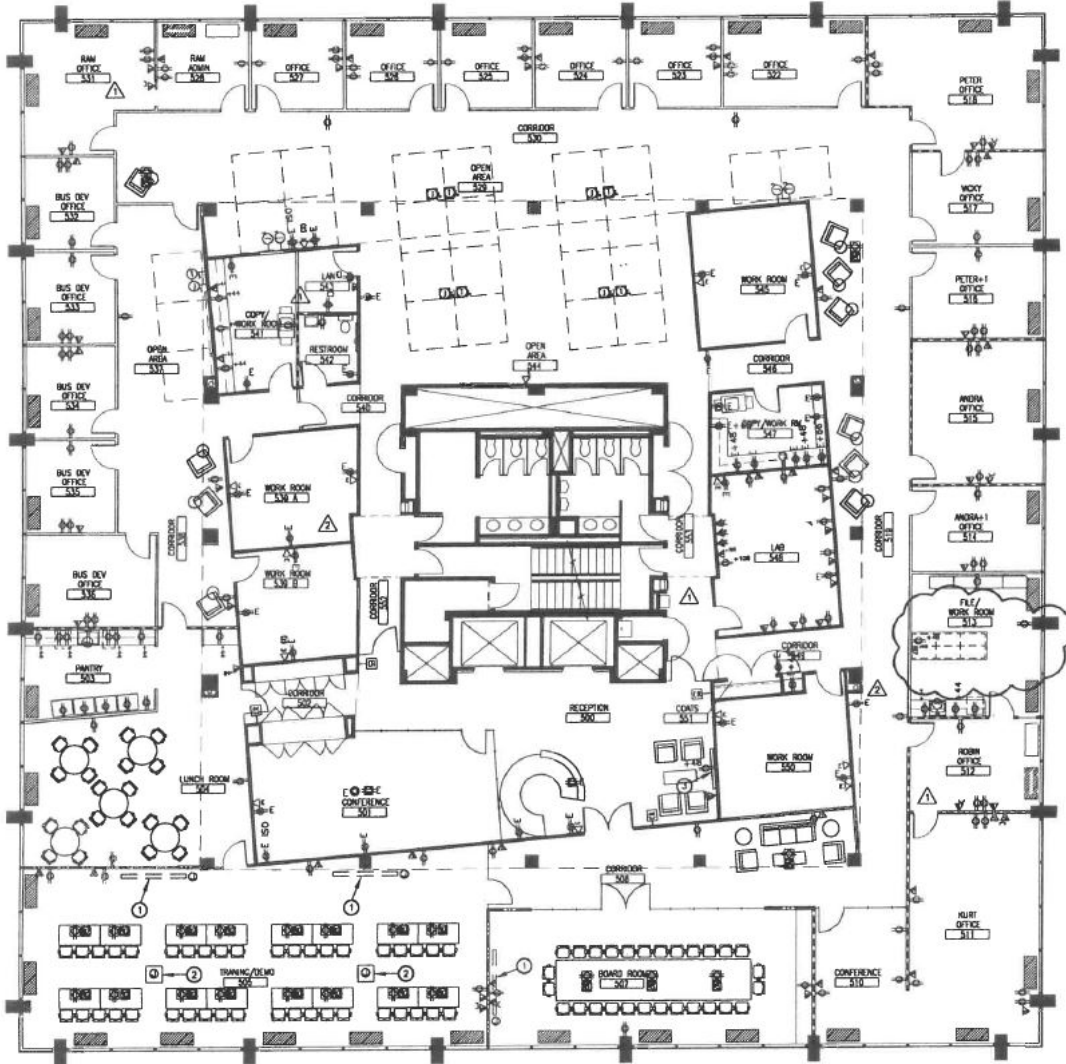
Paul "Rocky" Kern **Richard Coppola**
 301.304.8399 301.304.8405
 pkern@lpc.com rcoppola@lpc.com

Lincoln

PARK BUILDING

Suite 500

6400 Goldsboro Road | Bethesda, MD 20817



Suite	Size	Description
Suite 500	15,700 SF	Full floor available immediately

Paul "Rocky" Kern Richard Coppola
 301.304.8399 301.304.8405
 pkern@lpc.com rcoppola@lpc.com

Lincoln



PARK BUILDING

6400 Goldsboro Road
Bethesda, MD 20817



Leasing Information:
301.304.8300

Paul "Rocky" Kern
301.304.8399
pkern@lpc.com

Richard Coppola
301.304.8405
rcoppola@lpc.com

Lincoln

Lincoln Property Company
1101 Wootton Pkwy
Rockville, MD 20854

www.lpc.com