



HOULIHAN LAWRENCE  
COMMERCIAL

# 306 Midland Ave

Port Chester, NY 10573

**Russell A. Detres**

RE Salesperson  
914 548 6700  
rdetres@houlihanlawrence.com

**Garry Klein**

Associate Broker | Regional Manager  
914 588 1585  
gklein@houlihanlawrence.com



FOR LEASE



# Property Summary

FOR LEASE



## Property Description

Standalone +/- 650 sf open retail/office space with additional +/- 350 SF dedicated storage available on Midland Avenue in Port Chester.

Located near Home Depot, with quick access to I-95, Route 287, and Route 1, and minutes to downtown Rye.

Ideal for appointment-based professional or service users seeking visibility without high walk-in traffic. Open front layout with flexible configuration and rear storage.

## Offering Summary

Lease Rate:	\$2,850.00 per month
Available SF	650 - 1,000 SF



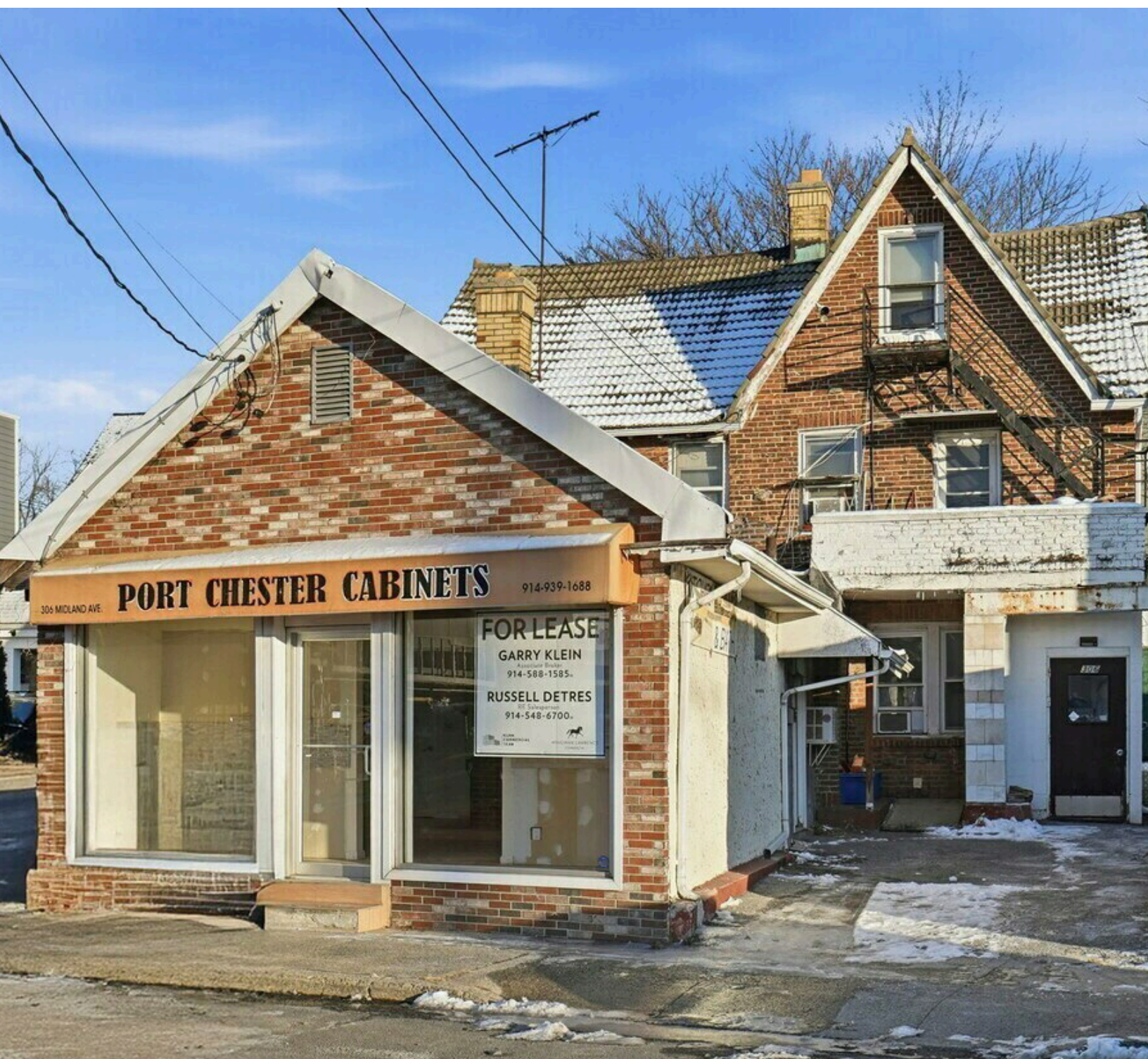
**Houlihan Lawrence Commercial**  
800 Westchester Ave. Ste. N517  
Rye Brook, NY 10573  
[View Website](#)





# Exterior

FOR LEASE



**Houlihan Lawrence Commercial**  
800 Westchester Ave. Ste. N517  
Rye Brook, NY 10573  
[View Website](#)



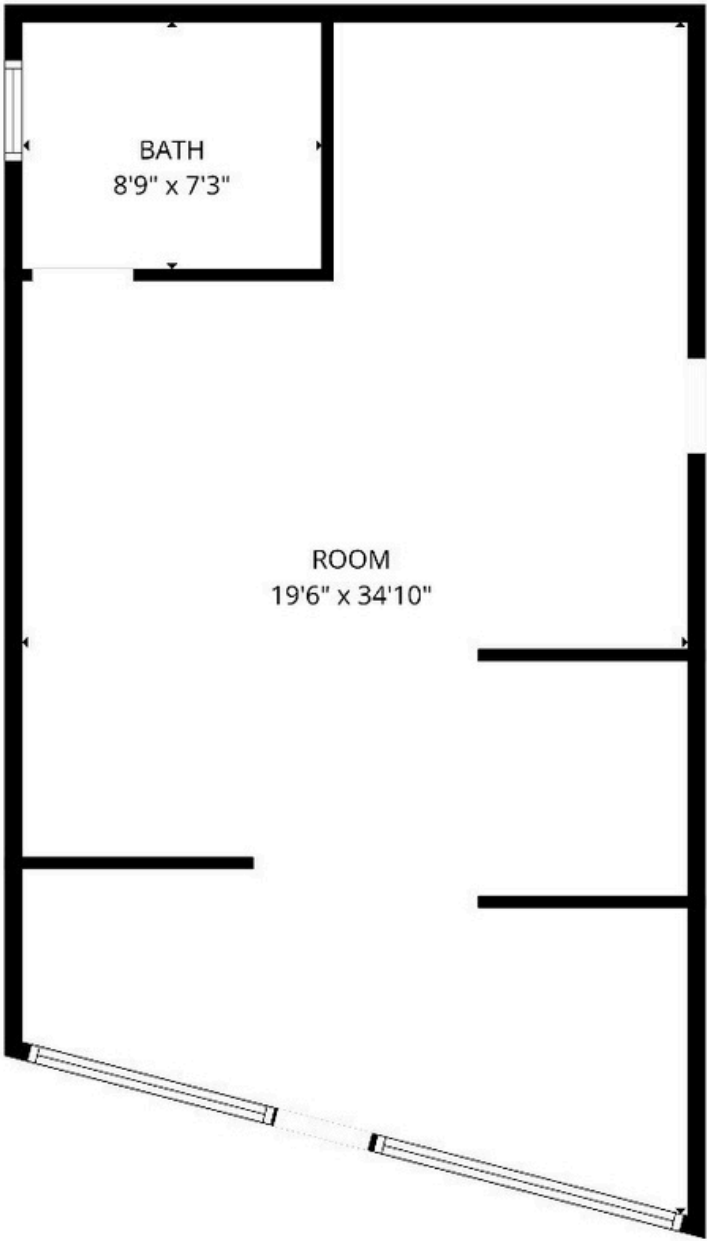
**HOULIHAN LAWRENCE**  
COMMERCIAL





# Floor Plan

FOR LEASE

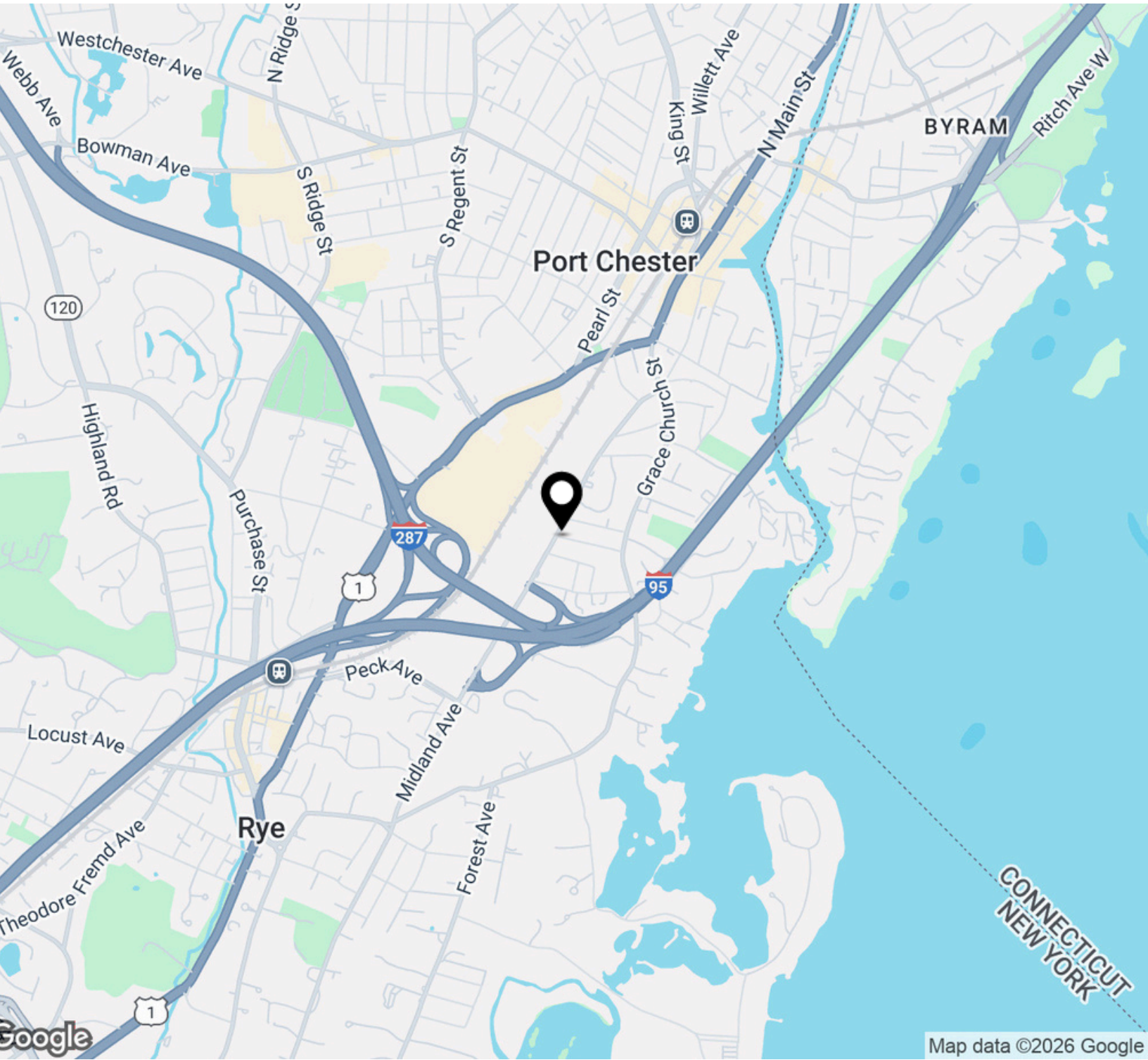


FLOOR PLAN CREATED BY CUBICASA APP. MEASUREMENTS DEEMED HIGHLY RELIABLE BUT NOT GUARANTEED.



# Regional Map

FOR LEASE

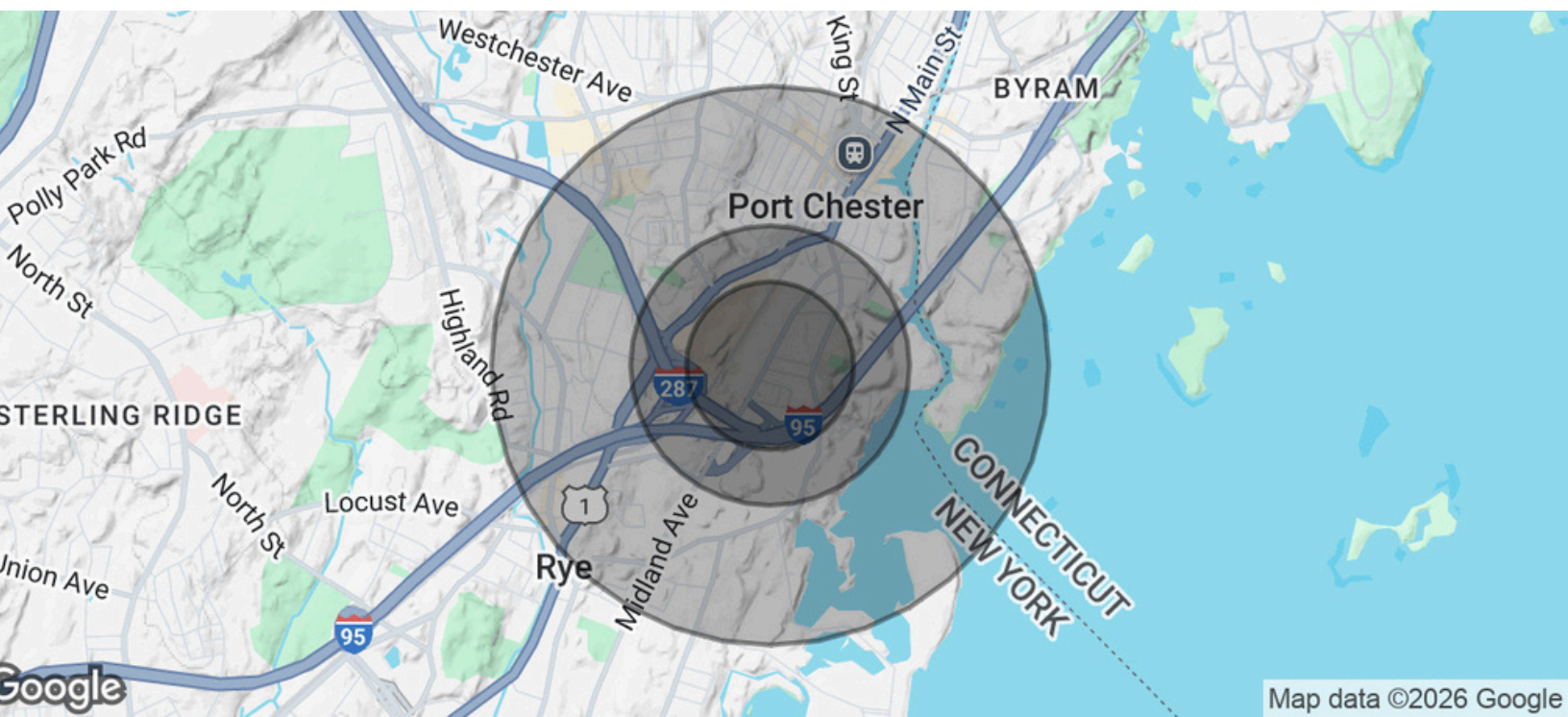


**Houlihan Lawrence Commercial**  
800 Westchester Ave. Ste. N517  
Rye Brook, NY 10573  
[View Website](#)



# Demographics Map & Report

FOR LEASE



Population	0.3 Miles	0.5 Miles	1 Mile
TotalPopulation	3,313	5,486	22,755
Average Age	35	36	38
Average Age (Male)	34	35	37
Average Age (Female)	36	37	39
Households & Income	0.3 Miles	0.5 Miles	1 Mile
Total Households	1,040	1,691	7,394
# of Persons per HH	3.2	3.2	3.1
Average HH Income	\$93,177	\$104,809	\$135,696
Average House Value	\$732,921	\$774,770	\$807,329

Demographicsdata derived from AlphaMap



Houlihan Lawrence Commercial  
800 Westchester Ave. Ste. N517  
Rye Brook, NY 10573  
[View Website](#)

