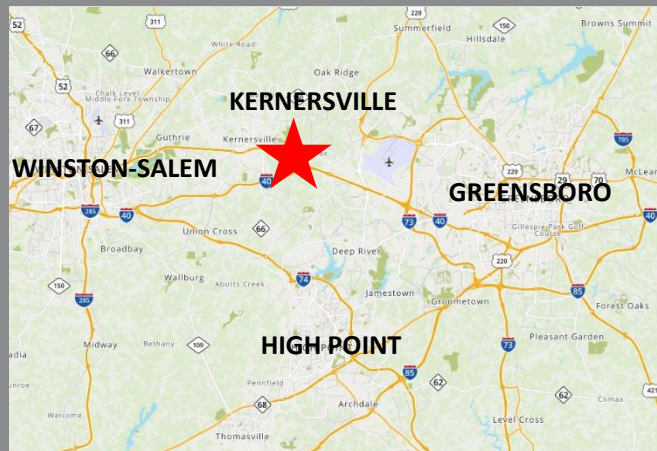


MAIN STREET MARKET | KERNERSVILLE, NC



LOCATION: OLD WINSTON ROAD AND
MAIN STREET, KERNERSVILLE, NC

SUMMARY:

- Anchored by 49,358 SF **LOWES FOODS**
- Kernersville is located at the heart of a metropolitan area which consists of the cities of Greensboro, High Point and Winston-Salem
- 25,200 sf of shop space for lease starting at 1,400 sf
- Restaurant end cap w/patio available
- 1.32 acre outparcel for sale, built to suit or ground lease



2300 Curlew Road, Suite 100
Palm Harbor, Florida 34683
www.BarclayGroup.com

Matt Fuller
Leasing and Land Sales
727-733-7828 Office
mfuller@barclaygroup.com

MAIN STREET MARKET | SITE PLAN

TENANTS

BLDG 230
 SUITE A 1,400 SF JERSEY MIKES
 SUITE B/C 2,800 SF TIGER KIM TAE KWON DO
 SUITE D 1,400 SF LEE NAILS
 SUITE E 1,400 SF **AVAILABLE**

BLDG 220

SUITE A/B 2,800 SF BARBERITOS
 SUITE C 1,400 SF **AVAILABLE**
 SUITE D 1,400 SF **AVAILABLE**
 SUITE E 1,400 SF Benchmark PT
 SUITE F/G 2,800 SF LEDO'S PIZZA

BLDG 210

SUITE A 1,400 SF CLEANERS
 SUITE B 1,400 SF YOSHI EXPRESS
 SUITE C 1,400 SF **AVAILABLE**
 SUITE D 1,400 SF TOBBACO/VAPE
 SUITE E 2,800 SF **AVAILABLE**

OUTPARCEL 2

SUITE A 3,500 SF ASPEN DENTAL
 SUITE B 3,200 SF **AVAILABLE**
 SUITE C 2,500 SF GO HEALTH
 SUITE D 3,400 SF TRULIANT CREDIT U



MAIN STREET MARKET

S. Main St. & Old Winston Rd. - Kernersville, NC • C&P Project #2170612 • 11-06-18

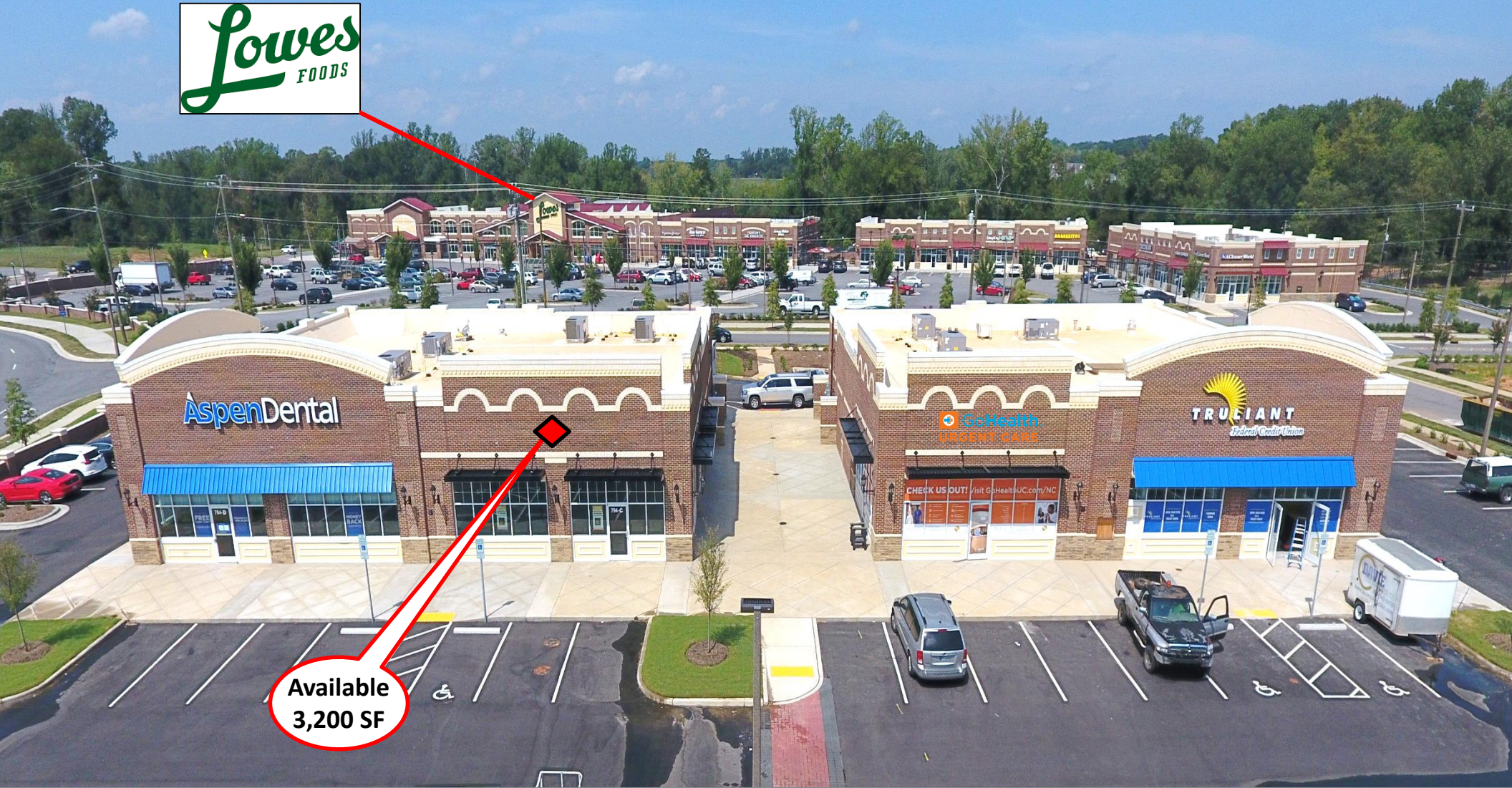
DISCLAIMER: THIS CONCEPTUAL SITE PLAN IS NOT AN EXACT DEPICTION OF THE FINAL COMPLETED DEVELOPMENT. THE PLAN IS PRELIMINARY AND SUBJECT TO CHANGE PENDING FINAL ZONING, GOVERNMENTAL, LOCAL, STATE, AND FEDERAL APPROVALS. THIS DOCUMENT IS STRICTLY CONFIDENTIAL AND IS MEANT FOR ITS RECIPIENTS ONLY. THE SITE PLAN SHALL NOT BE COPIED, REPRODUCED, DISTRIBUTED OR IN WHOLE OR IN PART OR TRANSFERRED TO ANY THIRD PARTY WITHOUT THE DEVELOPERS EXPRESSED WRITTEN CONSENT.



2300 Curlew Road, Suite 100
 Palm Harbor, Florida 34683
www.BarclayGroup.com

Matt Fuller
 Leasing and Land Sales
 727-733-7828 Office
mfuller@barclaygroup.com

MAIN STREET MARKET | AERIAL



2300 Curlew Road, Suite 100
Palm Harbor, Florida 34683
www.BarclayGroup.com

Matt Fuller
Leasing and Land Sales
727-733-7828 Office
mfuller@barclaygroup.com

MAIN STREET MARKET | AERIAL



2300 Curlew Road, Suite 100
Palm Harbor, Florida 34683
www.BarclayGroup.com

Matt Fuller
Leasing and Land Sales
727-733-7828 Office
mfuller@barclaygroup.com

MAIN STREET MARKET | AERIAL MAP



2300 Curlew Road, Suite 100
Palm Harbor, Florida 34683
www.BarclayGroup.com

Matt Fuller
Leasing and Land Sales
727-733-7828 Office
mfuller@barclaygroup.com

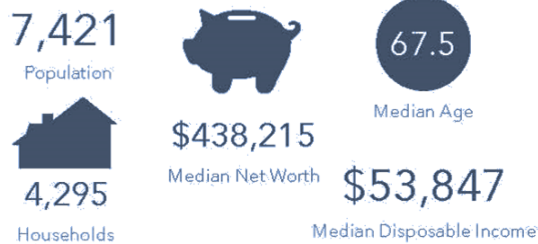
MAIN STREET MARKET | DEMOGRAPHICS

1 Mile

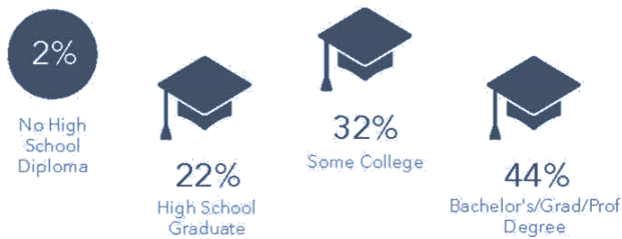
ANNUAL HOUSEHOLD SPENDING



KEY FACTS



EDUCATION

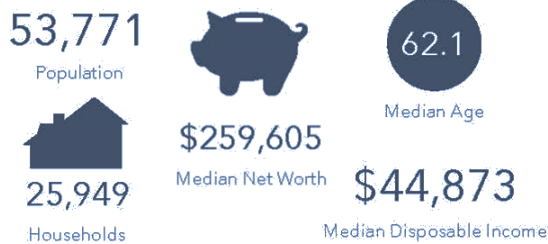


3 Mile

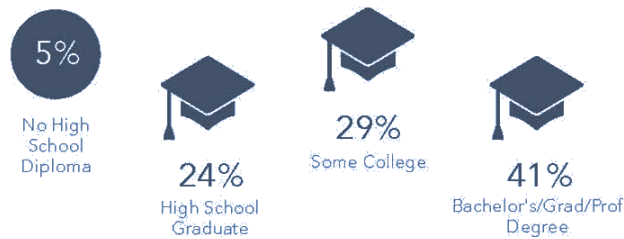
ANNUAL HOUSEHOLD SPENDING



KEY FACTS



EDUCATION

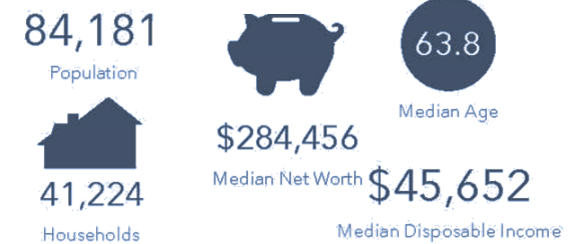


5 Mile

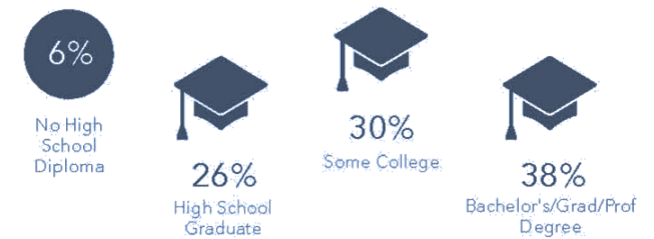
ANNUAL HOUSEHOLD SPENDING



KEY FACTS



EDUCATION



2300 Curlew Road, Suite 100
Palm Harbor, Florida 34683
www.BarclayGroup.com

Matt Fuller
Leasing and Land Sales
727-733-7828 Office
mfuller@barclaygroup.com