



THE
BROOKSHIRE
COMPANY
COMMERCIAL & INDUSTRIAL REAL ESTATE

Rail Park - Roberts, Wisconsin

Located by Hwy 12 and 130th St

Approximately 80 Acres Remain
Negotiable price



Contact

ROYCE PAVELKA

(952) 960-4744 | ROYCE@BROOKSHIRECO.COM

GERRY NORTON

(952) 960-4745 | GERRY@BROOKSHIRECO.COM

Property Description - Rail Park

Located off the Union Pacific rail line, the Roberts Rail Park continues on the successful growth of the adjacent Roberts Business Park. With Harris Rebar and Xcel Energy having completed recent projects, approximately 80 acres remains for future industrial and rail dependent development.



PROPERTY HIGHLIGHTS

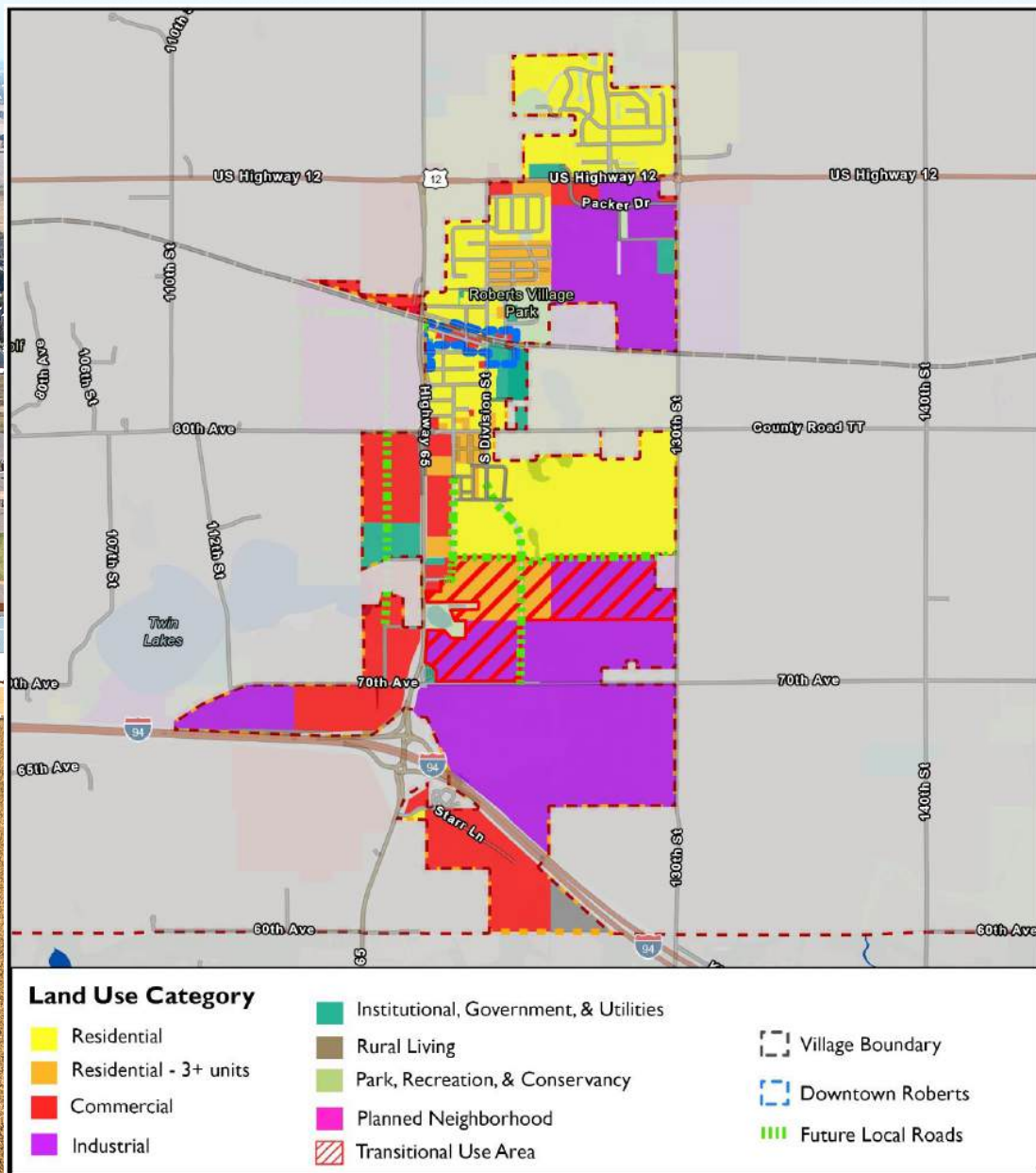
- Approx 80 acres remain
- 3-miles north of I-94
- Adjacent to Union Pacific Rail Road
- Generally level with utilities and roadway on perimeter
- Flexible on final design and rail access
- M7 Zoning

LOCATION DESCRIPTION

- Nearby highways:
I-94, Hwy 65 & Hwy 12
- 35 Minutes from Twin Cities
- New improved I-94 Interchange

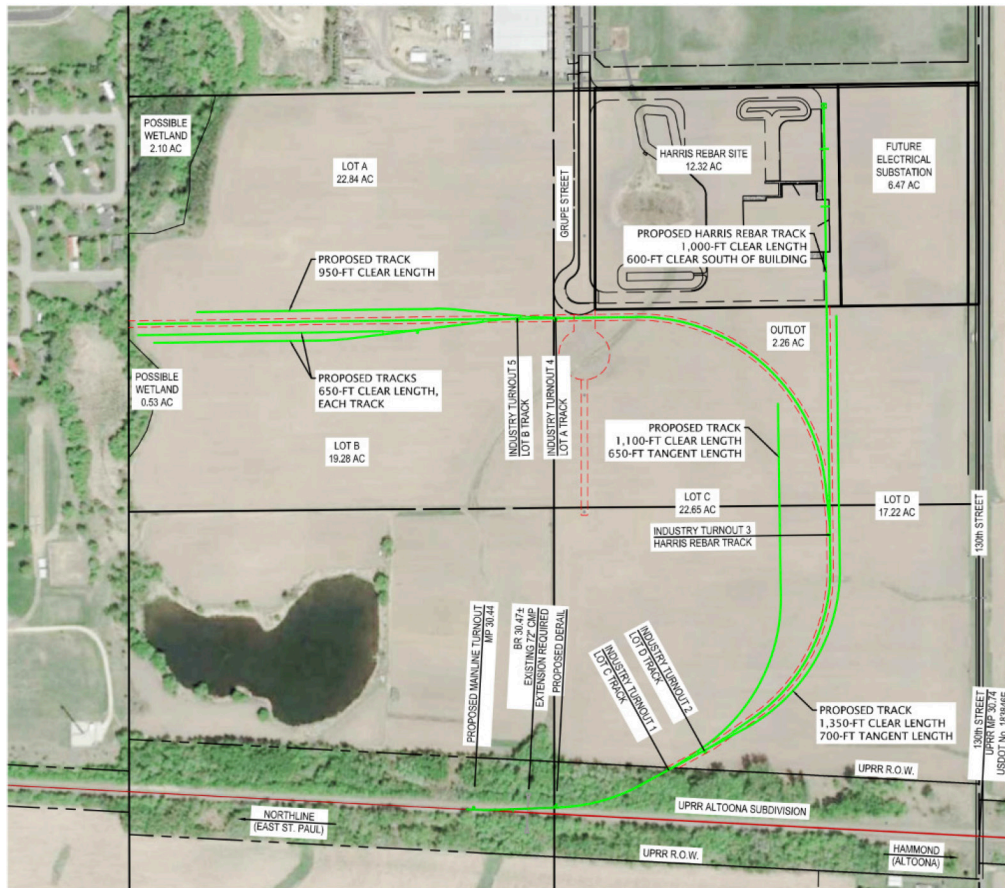
PRICING SUMMARY

Price Negotiable
Build to Suit lease
options available

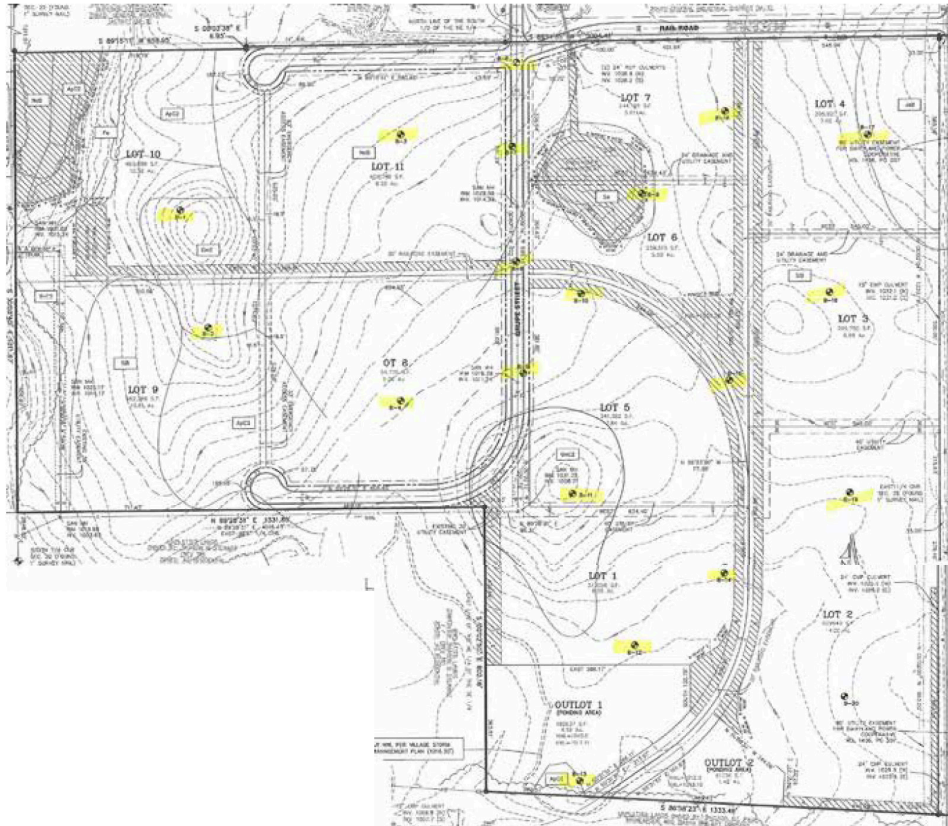


Rail Park - Map

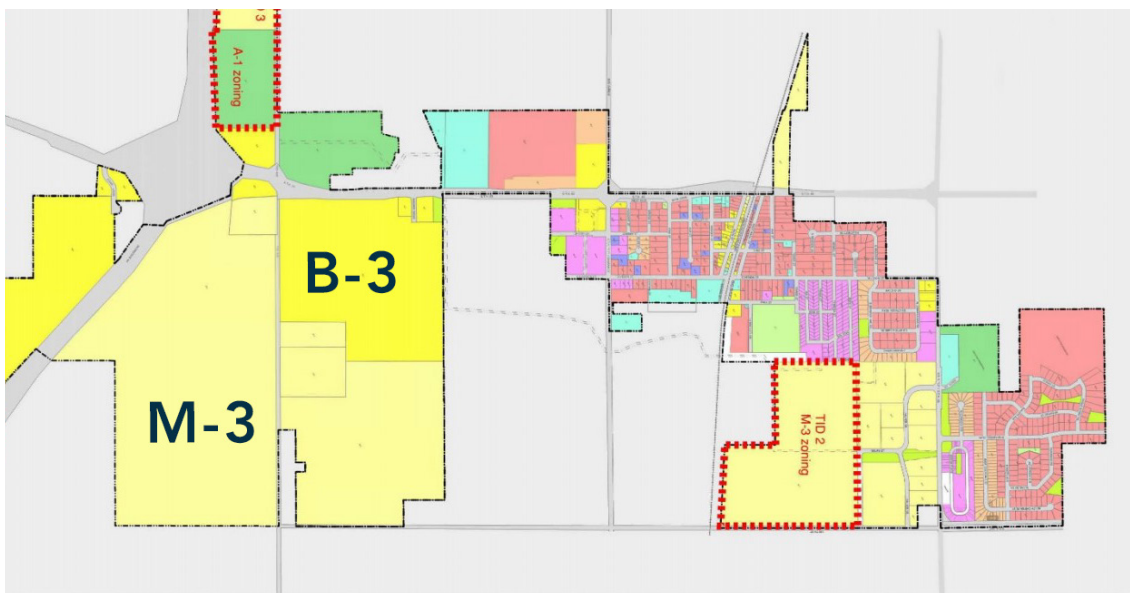
CONCEPTUAL PARK LAYOUTS



SOIL BORINGS FOR RAIL ACCESS BUSINESS



ZONING





For more information, contact
the Brookshire Co.

ROYCE PAVELKA

(952) 960-4744 | ROYCE@BROOKSHIRECO.COM

GERRY NORTON

(952) 960-4745 | GERRY@BROOKSHIRECO.COM

This information contained herein is from sources deemed reliable, but no warranty or representation is made as to the accuracy thereof and no liability may be imposed.

