



**JORDAN TROTTER**  
COMMERCIAL REAL ESTATE

# AUGUSTA RIVERFRONT CENTER

One Tenth Street | Augusta, GA 30901

FOR LEASE

1,458 - 7,422 SF

**PARKER DYE**

parker@jordantrotter.com  
706 • 736 • 1031



[CLICK HERE FOR A 360° AERIAL VIDEO](#)



**SUITE 460**  
7,422 SF

**SUITE 345**  
1,458 SF

**SUITE 650**  
1,875 SF

**SUITE 100**  
4,630 SF

# AVAILABLE SUITES



**SUITE 620**  
2,165 SF



**JORDAN TROTTER**  
COMMERCIAL REAL ESTATE

[CLICK HERE FOR A 360° VIEW OF THE LOBBY](#)

Welcome to the Augusta Riverfront Center in beautiful Downtown Augusta, Georgia. This Class A office space consists of 7 floors and is home to the Morris Museum of Art and the Augusta Metro Chamber of Commerce. A traditional mid-rise office tower, the Augusta Riverfront Center is 163,382 SF with a 17,880 SF floorplate.

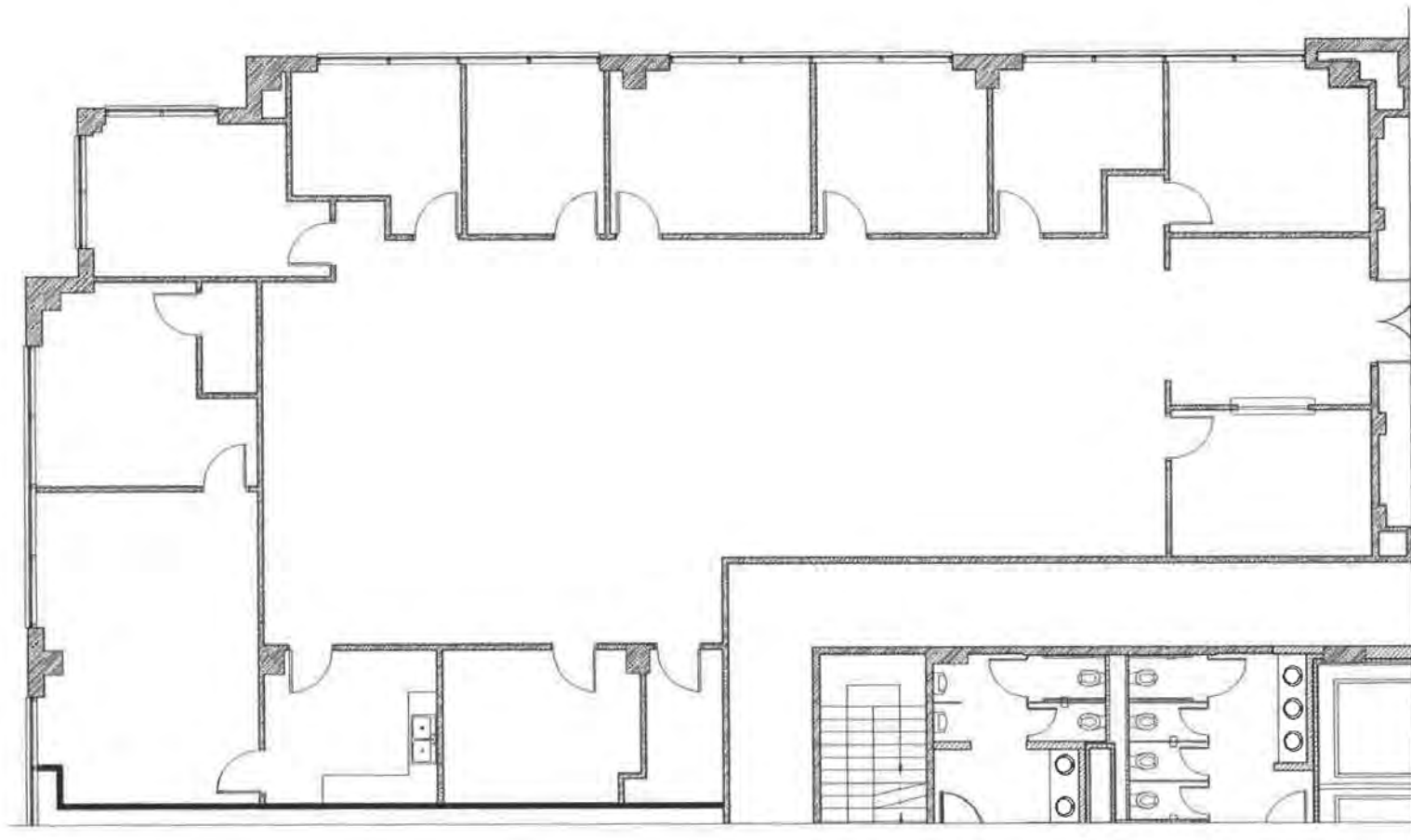
The Augusta Riverfront Center is situated on the Augusta Riverwalk (an 8 mile trail along the Savannah River). This building is located between the Georgia Cyber Center Buildings and the Marriott Hotel and Convention Center. Its convenient location offers stunning views of the Savannah River and the downtown landscape. It is within walking distance of the shopping, dining, and entertainment district of Downtown Augusta.

SUITES	SIZE
SUITE 100	4,630 SF
SUITE 345	1,458 SF
SUITE 460	7,422 SF
SUITE 620	2,165 SF
SUITE 650	1,875 SF

# SUITE 100 FLOORPLAN

## SUITE 100 HIGHLIGHTS

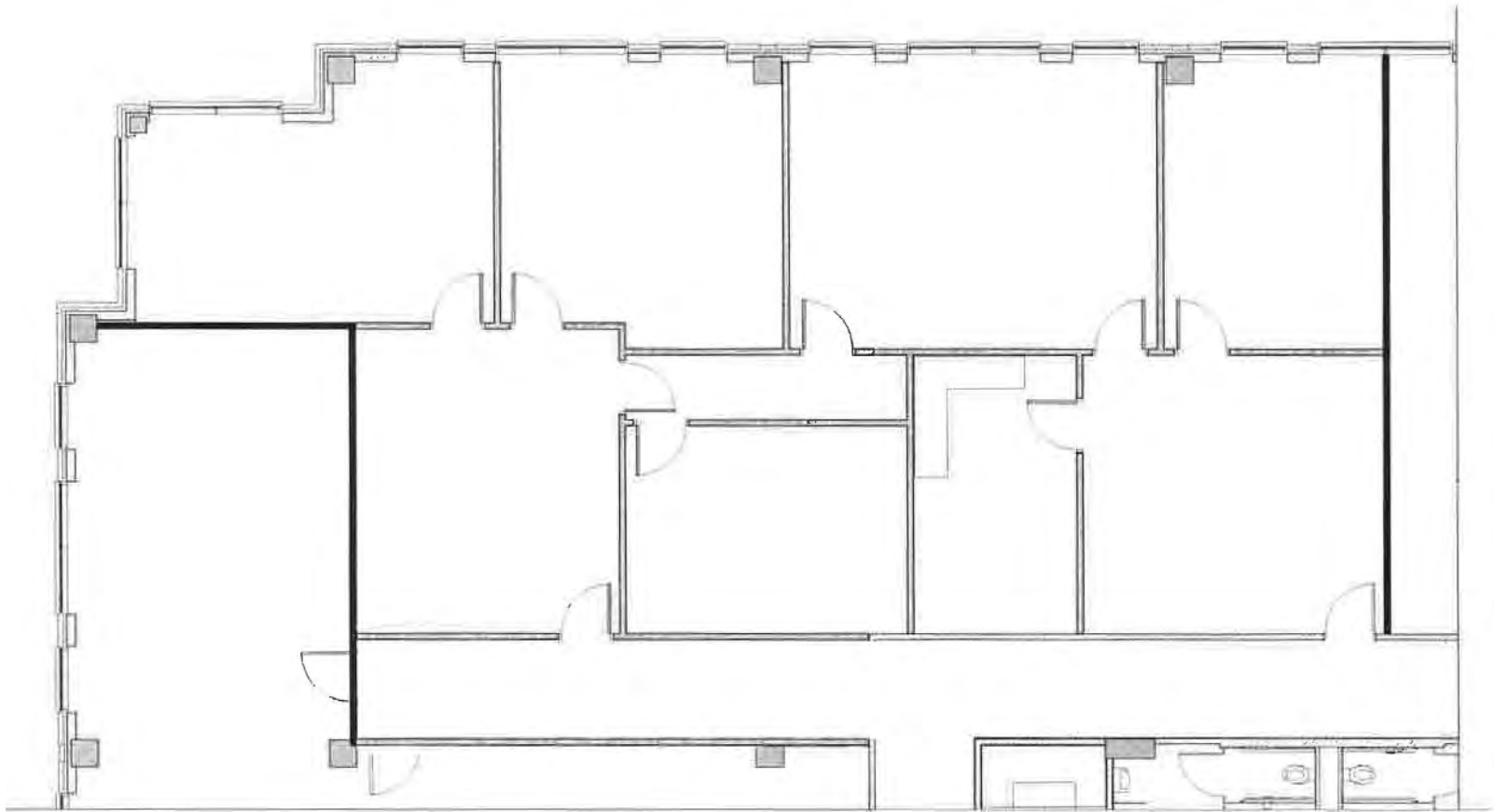
- 4,630 SF available
- Ground floor space with lobby exposure
- 10 ft ceilings
- 4,630 SF available
- Ground floor space with lobby exposure
- 10 ft ceilings



# SUITE 345 FLOORPLAN

## SUITE 345 HIGHLIGHTS

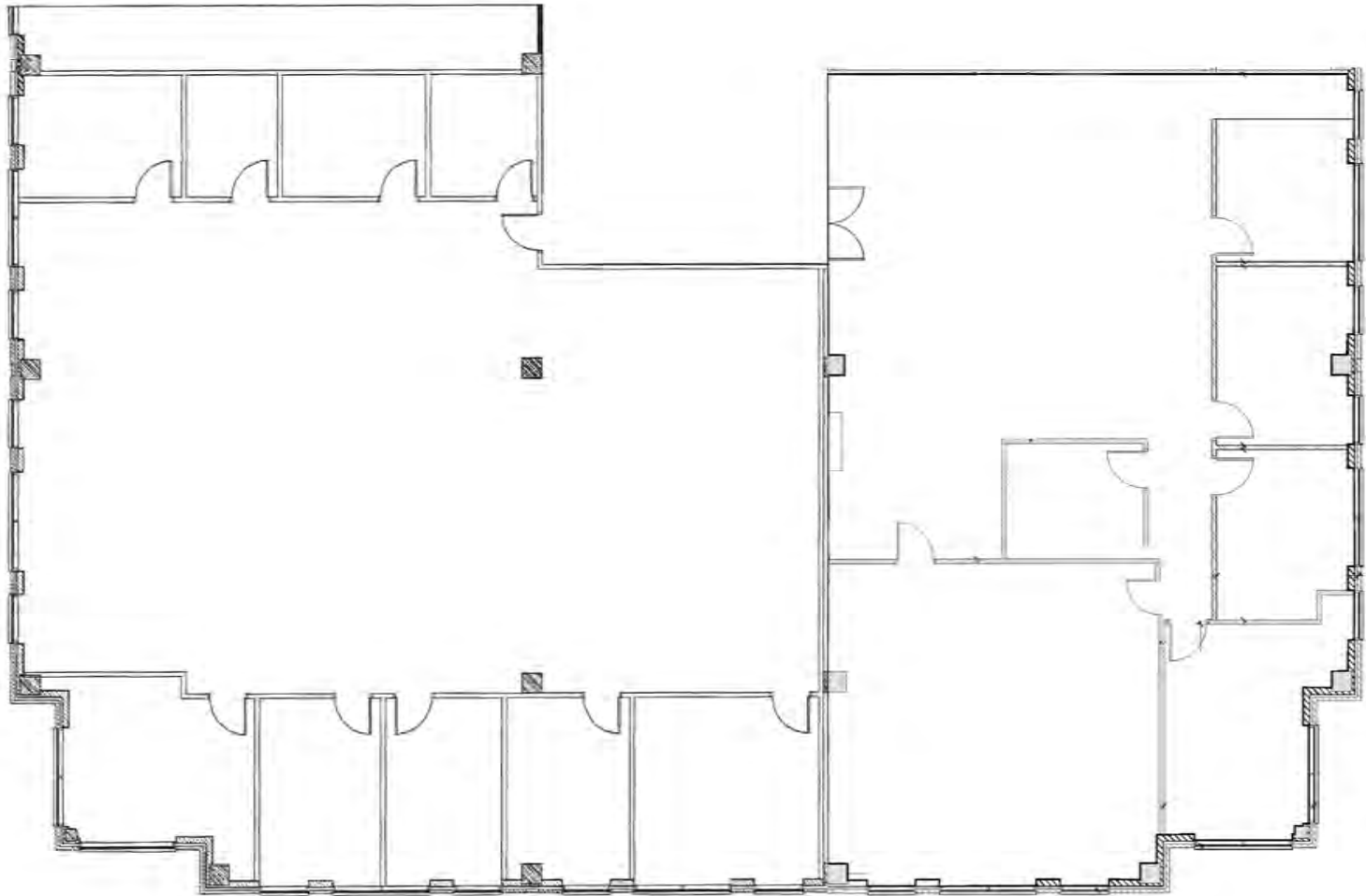
- 1,458 SF available
- 3rd floor space with partial build-out
- Large private offices
- Conference room



# SUITE 460 FLOORPLAN

## SUITE 460 HIGHLIGHTS

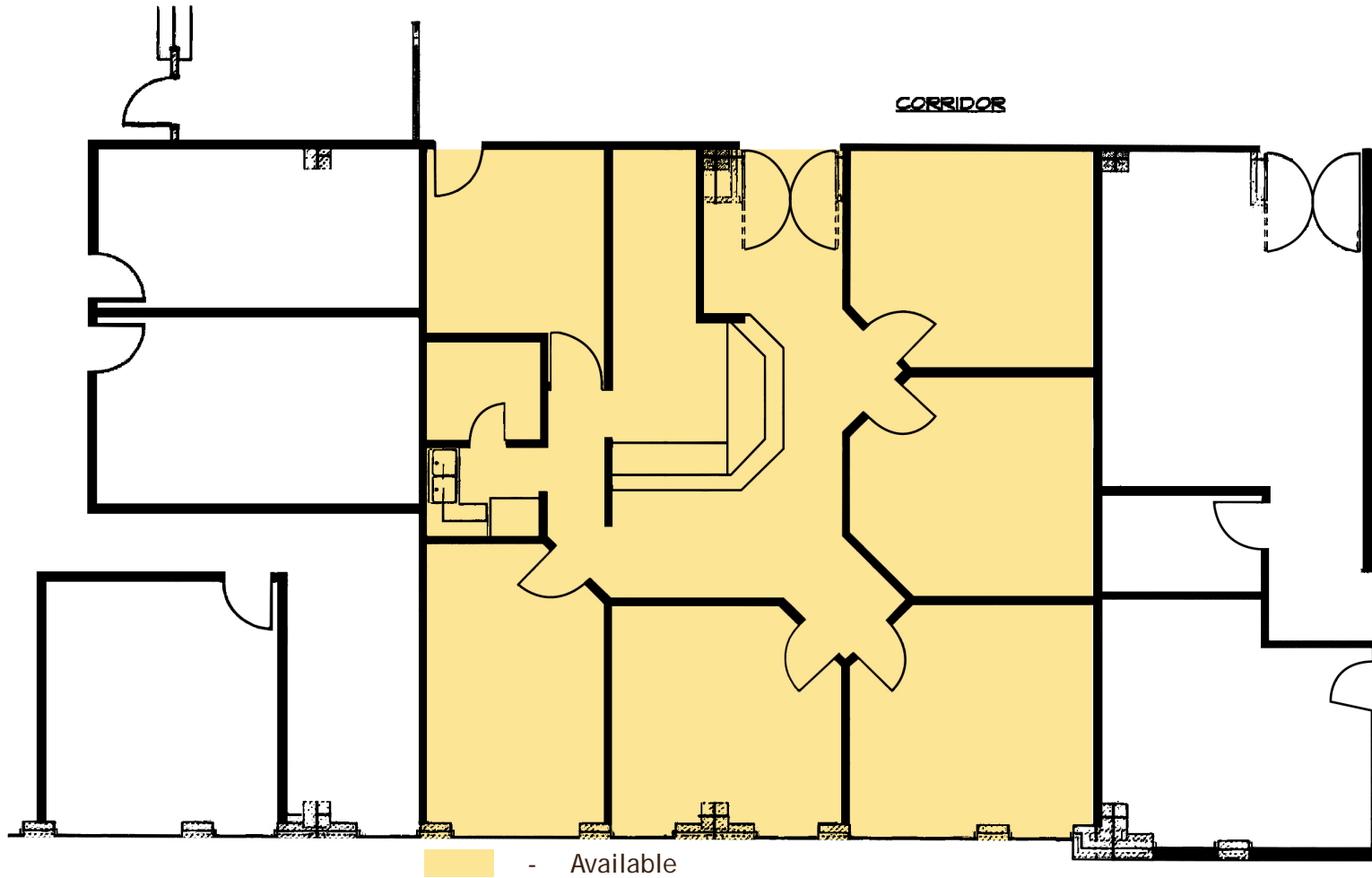
- 7,422 SF available
- 4th floor space
- Large private offices
- Conference room



# SUITE 620 FLOORPLAN

## SUITE 620 HIGHLIGHTS

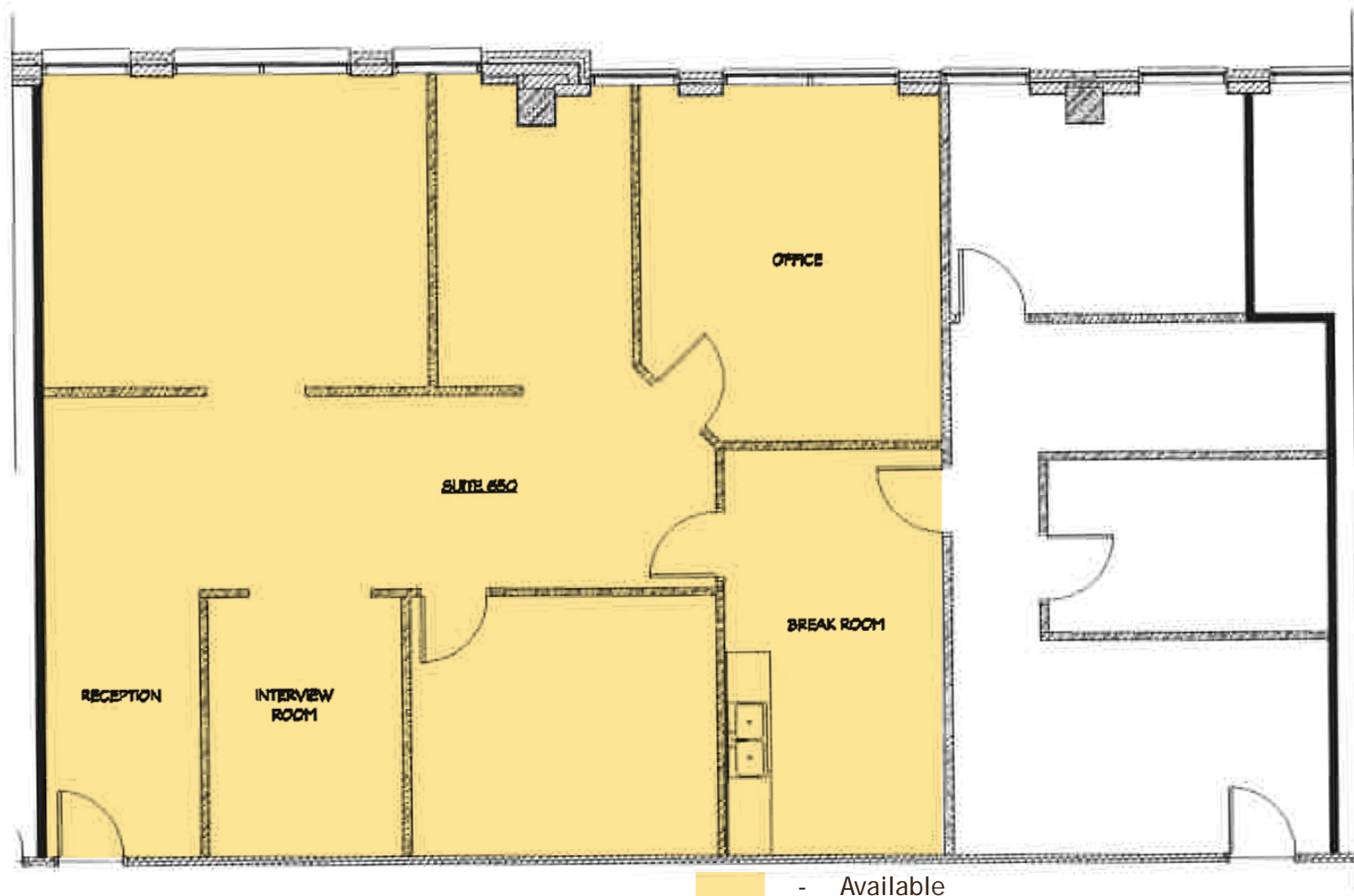
- 2,165 SF available
- Great space with upgraded finishes
- 5 offices and conference room



# SUITE 650 FLOORPLAN

## SUITE 650 HIGHLIGHTS

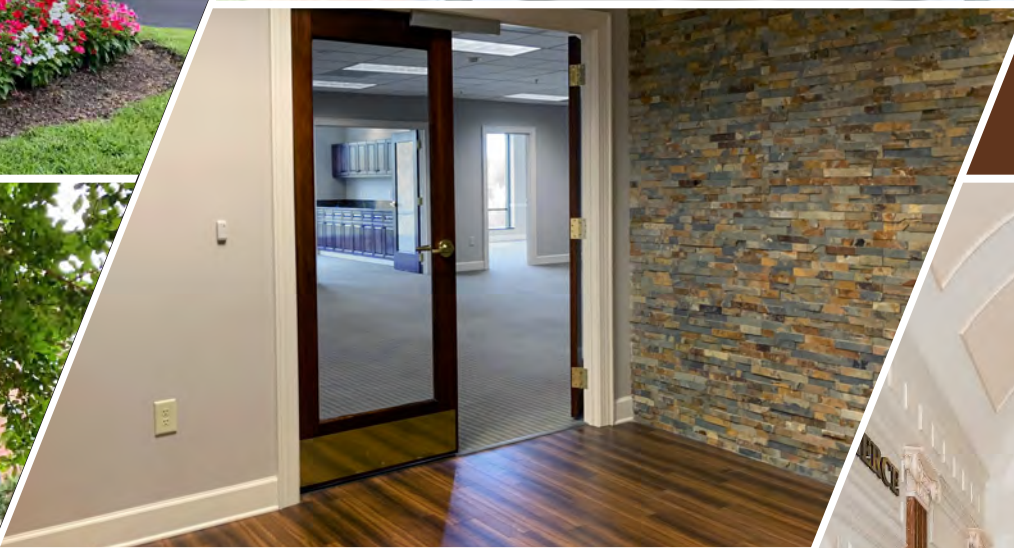
- 1,875 SF available
- Small space with private offices
- Bullpen area and breakroom







  
**JORDAN TROTTER**  
COMMERCIAL REAL ESTATE





  
**JORDAN TROTTER**  
COMMERCIAL REAL ESTATE



**325 PARKING STALLS  
EXCLUSIVE TO BUILDING**

**THIRD PARTY  
PARKING AVAILABLE**

TENTH STREET

TATNALL STREET

REYNOLDS STREET



AUGUSTA RIVERFRONT CENTER



JORDAN TROTTER  
COMMERCIAL REAL ESTATE