

# INDUSTRIAL SPACE FOR LEASE

## HOWE AVENUE INDUSTRIAL PARK

*50 Howe Ave, Millbury, Massachusetts*



BRIAN JOHNSON  
774.272.1112  
johnson@kelleher-sadowsky.com

PAUL MATT  
508.846.8800  
pmatt@kelleher-sadowsky.com







PROPERTY DESCRIPTION

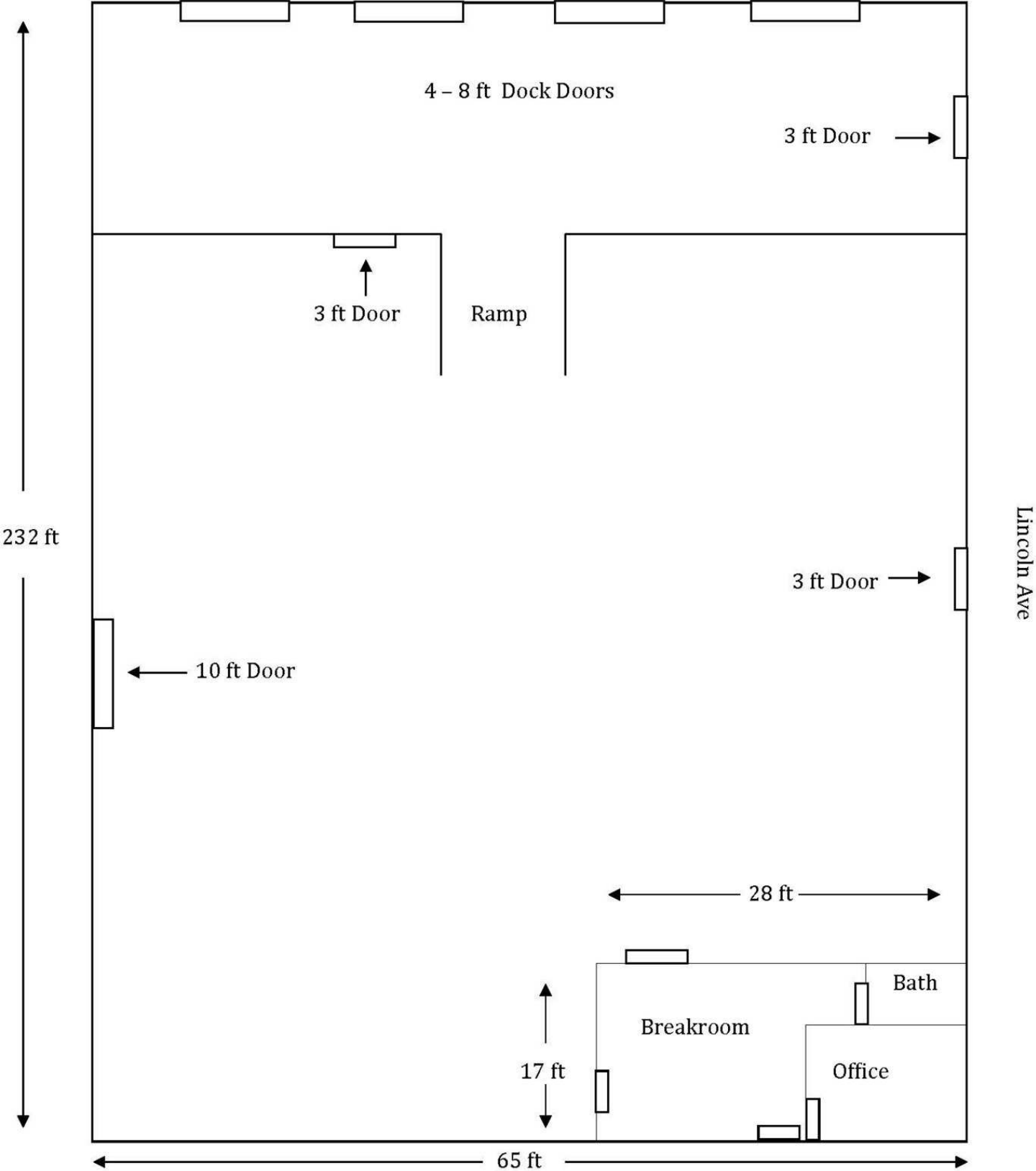
Brian Johnson & Paul Matt of Kelleher & Sadowsky Associates, Inc. are pleased to offer the availability of highly functional and efficient industrial / warehouse space available at the Howe Avenue Industrial Park located at 50 Howe Avenue in Millbury, MA. There is currently ±15,080 square feet coming available on July 1, 2025 in Building A that offers column-free space, ±16’ clear ceiling heights and ±1,000 square feet of internal office space that was installed in 2024, along with new exterior windows and tenant entryway. There are four (4) 8’ tailboard height loading docks and one (1) drive-in door. Building A offers adequate power and a secure setting.

There are also up to two acres of industrial outdoor storage space, along with two ±2,500 square foot Quonset huts, making this site a perfect location for a user that requires land area and secure storage.

The Howe Avenue Industrial Park is located within five minutes of Route 20 and Route 146, with easy access to the Mass Pike and I-290. The multi-tenanted property is well maintained and operated by an on-site Landlord.

OFFERING SUMMARY

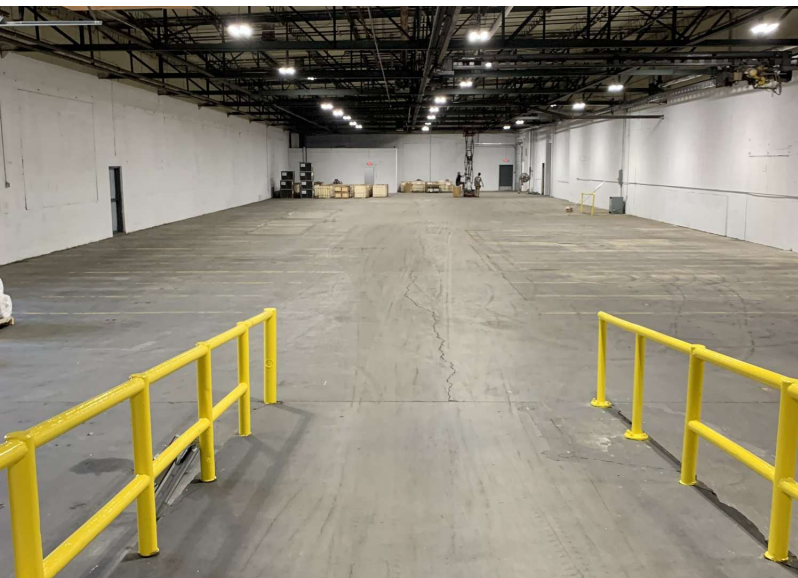
Property Type	Industrial with outdoor storage
Available SF	Building A: ±15,080 SF Quonset Huts: ±2,500 SF each Office Space: ±1,200 SF
Ceiling Height	±16'
Loading	Four (4) loading docks and one (1) drive-in door
Column Spacing:	Clear Span
Outdoor Storage	Up to two (2) acres
Lease Rate:	Building A: \$10.50/SF (NNN) Quonset Huts: 3,000/month





FOR LEASE • HOWE AVE. INDUSTRIAL PARK

Building A





# FOR LEASE • HOWE AVE. INDUSTRIAL PARK

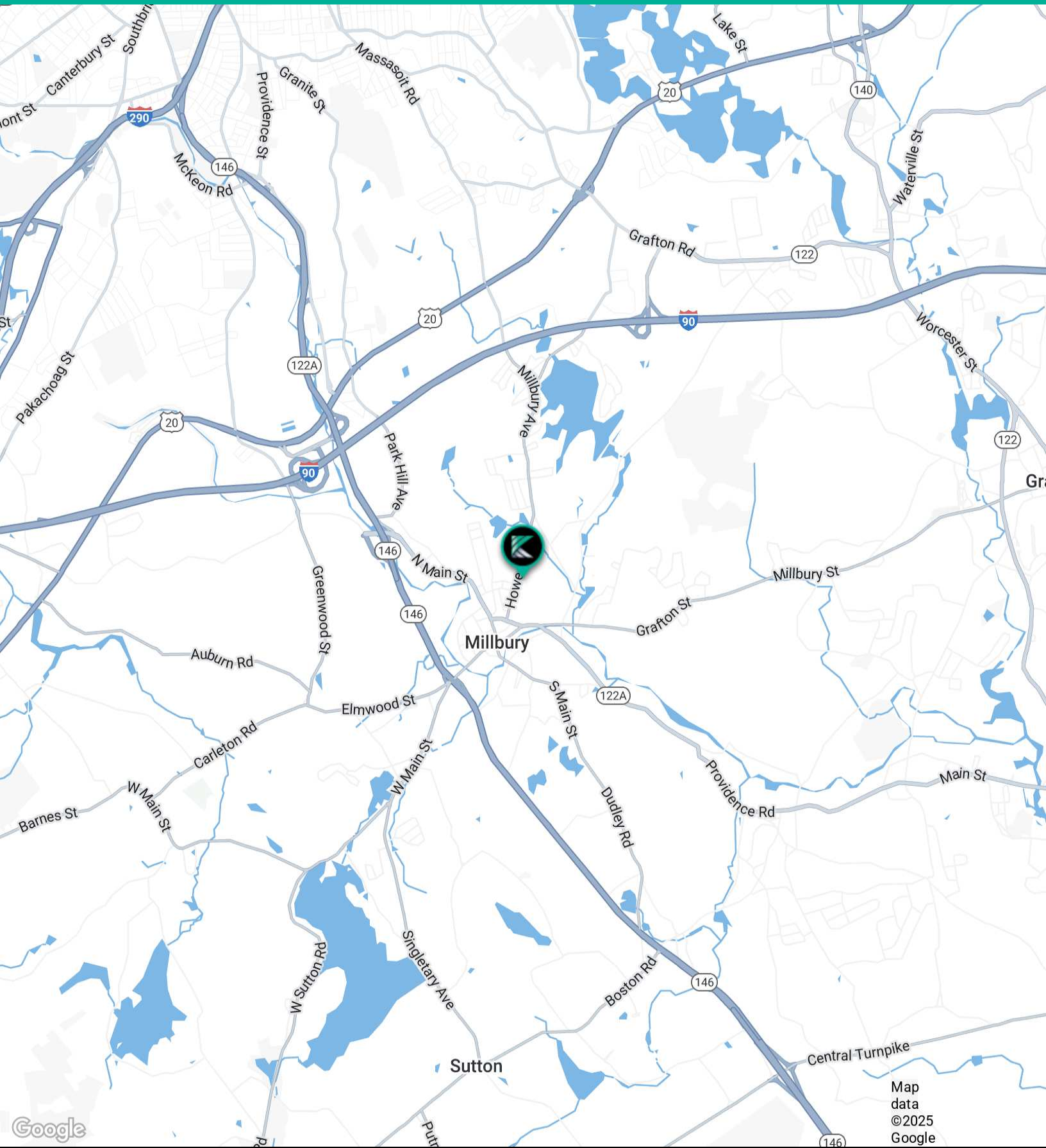
Quonset Huts





# FOR LEASE • HOWE AVE. INDUSTRIAL PARK

Location Map



Map data  
©2025  
Google